

# Raingler

## NETS & GRIPS

---

### Rear Seat Barrier Net Install

### 2014 and newer Jeep Cherokee

NOTE: Many newer models have B-pillar handles and even overhead on the ceiling that can be used for some of the top mounting locations. Check to see if you prefer to use these factory locations as the nets typically have enough adjustment to allow for this option. If your vehicle does not have handles in desired locations or you prefer to install mounting points for better fitment, please follow the below steps.

**IMPORTANT: READ INSTRUCTIONS FULLY BEFORE STARTING**

**Time:** *About 60 minutes*



**Paw Level:**

**Tools:** *(may vary by vehicle)*

1. Panel removal tool or small flat bade screwdriver
2. Small pick
3. Torx T-15 bit
4. Drill
5. 13/64" and 1/4" drill bit
6. Bench Vise

### Step 1

Carefully pop off round bolt cover in back quarter panel sides behind and above rear seat back with small flat blade or panel removal tool. Remove OE T-15 Torx bolts on both sides of cabin. Store, these can be reinstalled later when returning vehicle to stock condition.



### Step 2

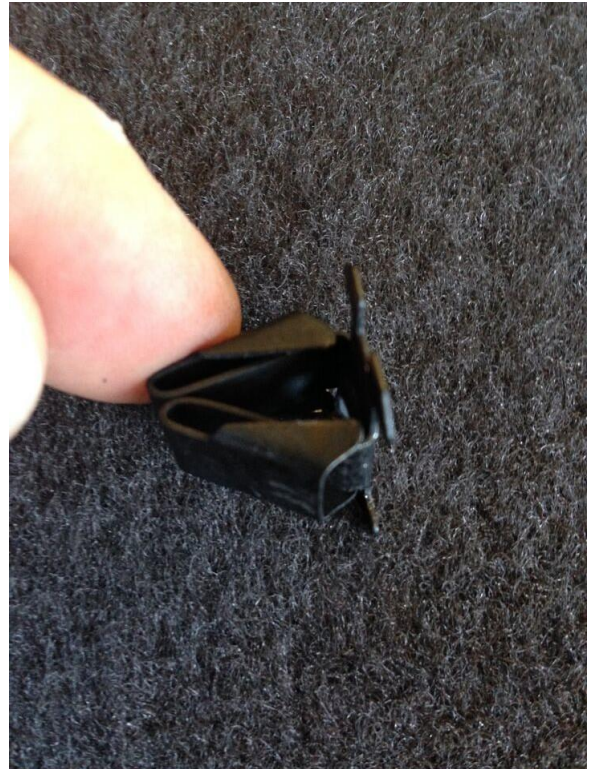
Carefully loosen upper part of trim panel and if needed, edge of door surrounds just in the upper rear bend of rear side door openings. Using a pick or small flat blade, press and release OE trim clips.



**Raingler**  
NETS & GRIPS

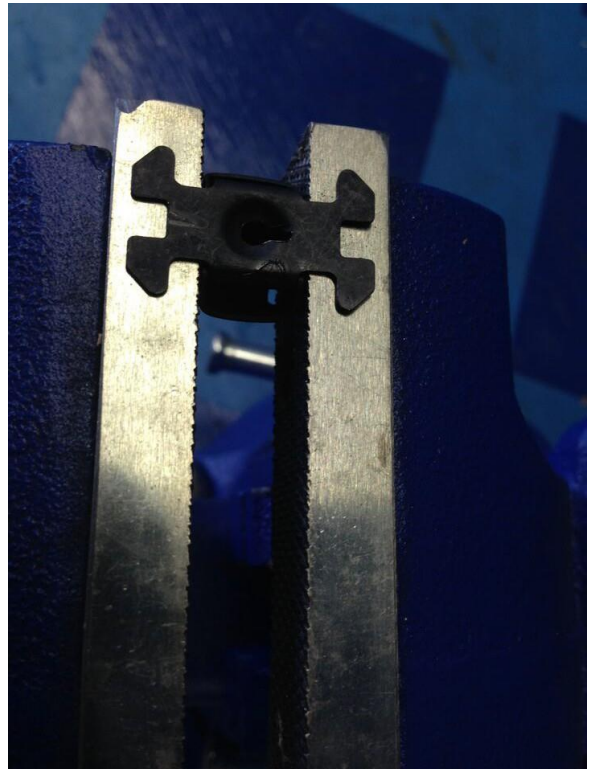
### Step 3

Here is a detail on the clip removed to show how it is released. Watch they do not drop down into opening on sides. If that happens they can be reached by removing the door sill and lower part of trim panel and retrieve with a magnetic extension if not accessible by hand.



### Step 4

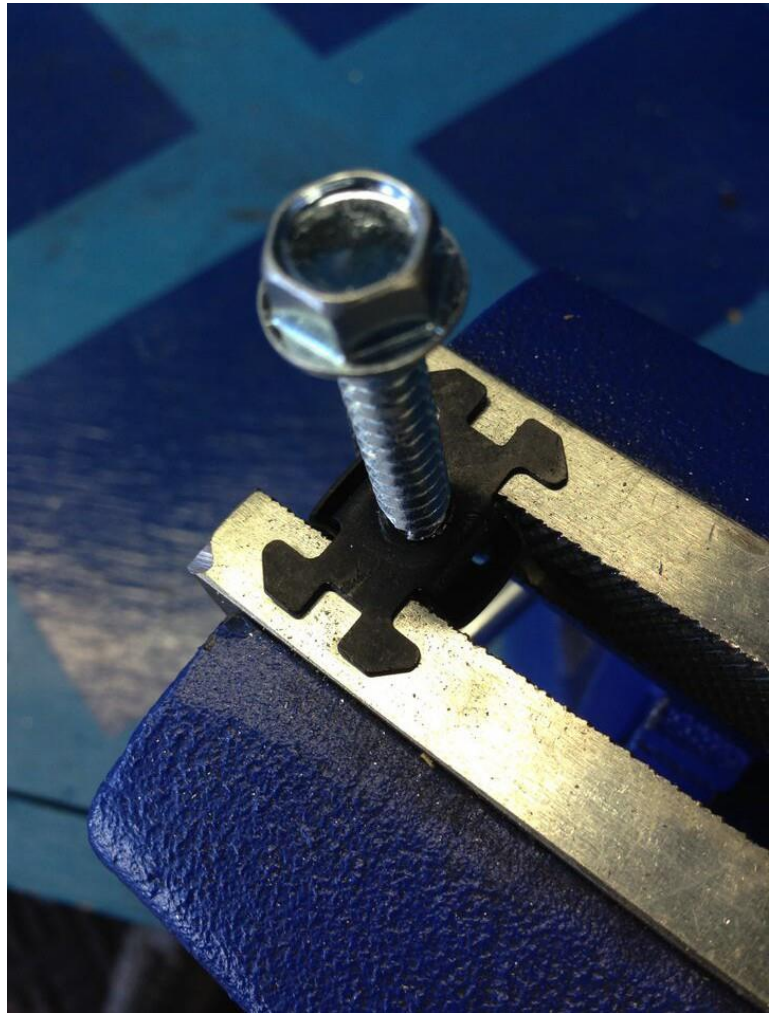
Place clips into bench vise as shown, the opening will need to be opened for the larger included SMS bolts and re-used in vehicle.





### Step 5

Open up gradually until the 15/64" bit size and then clean out thread using the supplied bolts. This is the bolt that will be used to mount the barrier in the vehicle.



### Step 6

Open up the OE hole in the plastic trim panel to 1/4" size to ease re-installation with larger bolt.



**Raingler**  
NETS & GRIPS

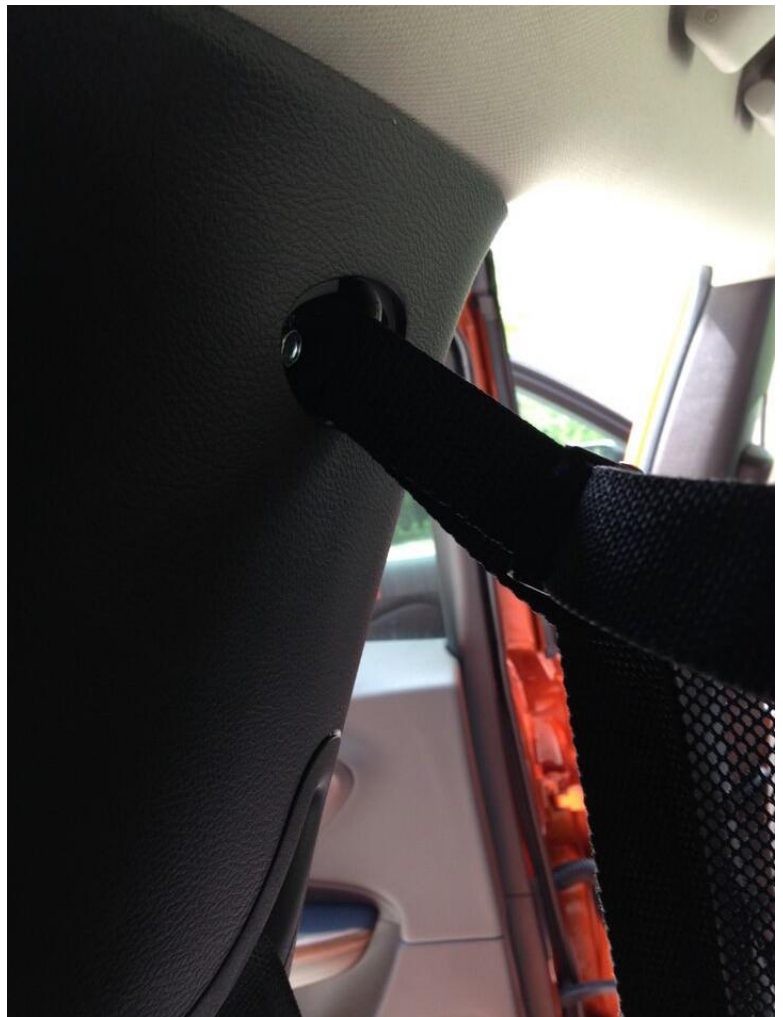
## Step 7

Reinstall modified clips and then plastic panels into original position being aware as to align OE plastic snaps into correct holes in structure. Install bolt through the black supplied square rings and align to modified OE clips. Orient and tighten with square rings extended as shown:



## Step 8

Reassemble any loosened surround trim and hang barrier from top installed square rings.

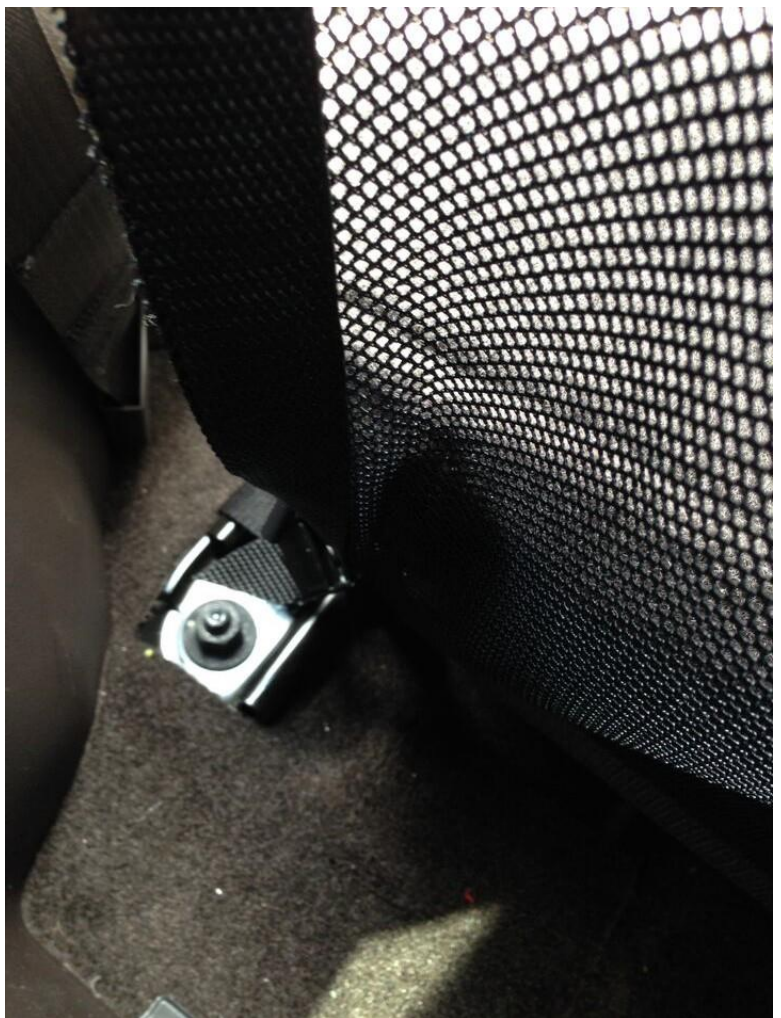


**Raingler**  
NETS & GRIPS



## Step 9

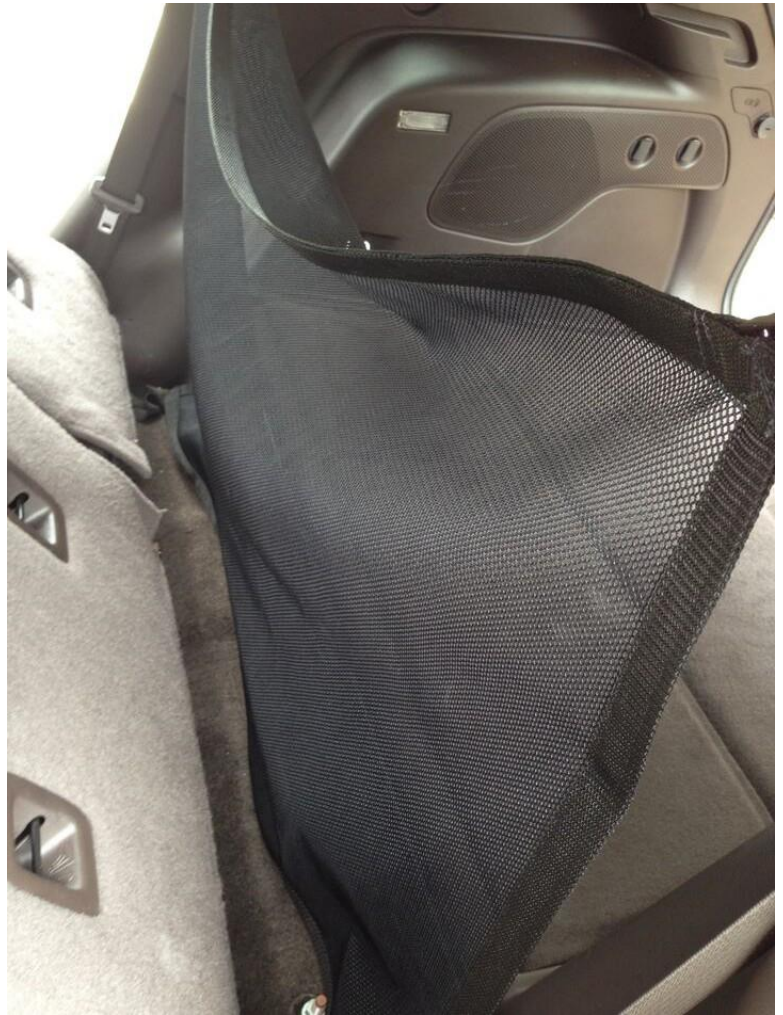
Wrap lower straps under rear seat brackets.



**Raingler**  
NETS & GRIPS

## Step 10

Leave a little loose right now and adjust to allow rear seats to be placed into desired final location. (NOTE: the barrier can be readjusted taut if rear seats are to be used in folded down position.)



## Step 11

Adjust headrests and top of net so the top strap rests on the back and topside of the headrests.



**Raingler**  
NETS & GRIPS



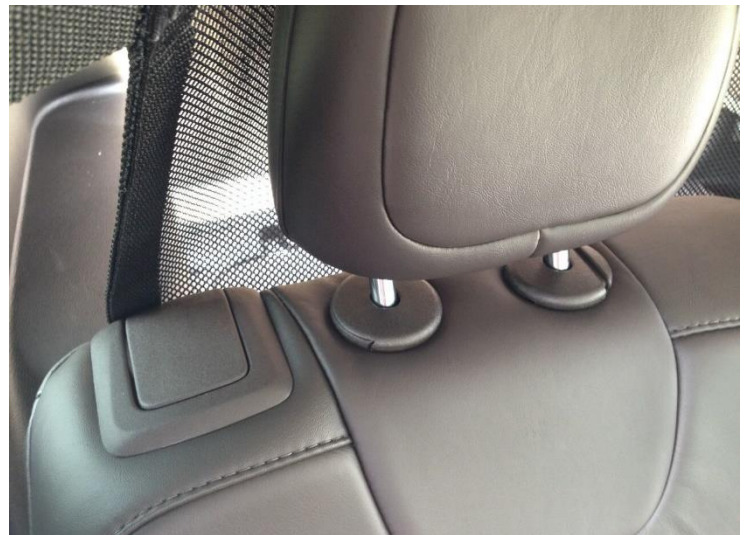
## Step 12

Adjust straps and seats to get desired seat location and tautness.



## Step 13

Pull sides to edge of seats and do final tensioning to make barrier taut.



## Step 14

the barrier may be used in conjunction with Raingler cargo area, ceiling and behind front seat barrier nets. Please contact us if any questions, thank you again for purchasing handmade products from Raingler.

Check out the video here:  
<https://vimeo.com/raingler>



**Raingler**  
NETS & GRIPS

Thank you for purchasing Raingler Nets.  
If you have any questions please contact us,  
we are here to help!