

Raingler

NETS & GRIPS

2007 - 2018 Jeep Wrangler JK/JKU Side Window Nets Install

NOTE: Many newer models have B-pillar handles and even overhead on the ceiling that can be used for some of the top mounting locations. Check to see if you prefer to use these factory locations as the nets typically have enough adjustment to allow for this option. If your vehicle does not have handles in desired locations or you prefer to install mounting points for better fitment, please follow the below steps.

IMPORTANT: READ INSTRUCTIONS FULLY BEFORE STARTING

Time: About 15-30 minutes



Paw Level:

Tools: (may vary by vehicle – not all will be used for all installations)

1. Ratchet Wrench with Extension
2. Panel Removal Tool
3. Torx T-45



The Raingler Side Window Nets are very easy to install and offer a couple different mounting options depending on your particular set up and other aftermarket and factory configurations.

Please contact us if you have any questions as we have done hundreds of installations on location. As Jeep owners and enthusiasts, we are very familiar with these vehicles and installation options that may be used as needed. The top can be left in place, but you will find it easier to install with hardtops removed and side soft tops windows and the top still in the up position.

Step 1

Hold up your window net to determine if it is the passenger or driver's side net you are installing.

The Raingler Logo will install to the lower rear of the vehicle. The nets are designed for the logos to face outside. Shown here are the JK 2 door model Raingler Side Window Nets.



Step 2

Start at the top of the net towards the front of the Jeep and wrap the strap at a diagonal around the roll bar and then back into the cam-buckle. Do not fully tighten yet.



Raingler
NETS & GRIPS

Step 3

Repeat this process for the remaining top straps and side straps, leaving the bottom straps for last.

JKU 4 Door Models – skip to step 5.



Step 4

JK 2 Door Model can now install the front lower strap around the roll bar (Shown on passenger side looking in from the front seat toward the back wheel well area).

JK 2 Door Models – skip to step 9.



Raingler
NETS & GRIPS

Step 5

JKU 4 Door Models only.

Open rear side door and loosen the door striker plate with a Torx T-45 bit. Note position of striker plate with a wax pencil or marker if needed. Most will already have a score in the paint from the initial vehicle build and adjustment. Driver's side shown.



Step 6

Remove the top Torx bolt and loosen the lower Torx to allow for free rotational movement. The lower bolt does not need to be fully removed.



Raingler
NETS & GRIPS

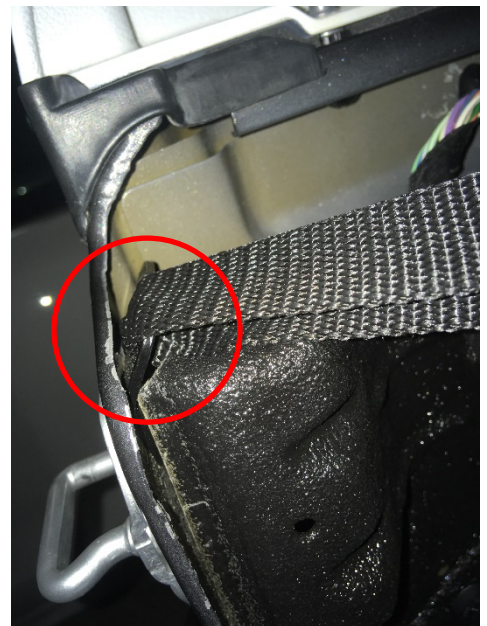
Step 7

Slide the black anchor plate included with your nets (4 door only) so that the mounting tabs' holes line up for the upper Torx bolt to be reinstalled. Needle nose pliers can be used if necessary, to line up the tab.



Step 8

Reinstall the Torx bolts and tighten, paying attention to the line up as was originally located, and hold the black anchor plate as shown.



Raingler
NETS & GRIPS

Step 9

The lower rear configuration can change slightly, depending on year of the Jeep or if trim plastic pieces have been removed already.

OPTIONAL installation for all models. If your Jeep is having a back window or containment net installed, you can also mount the rear lower strap as shown.



Step 10

If your Jeep does not have the plastic trim or has the much smaller version seat belt retractor cover, you can attach the rear straps around roll bar, under the smaller cover and back into the cam buckle. Then skip to step 15.



Raingler
NETS & GRIPS

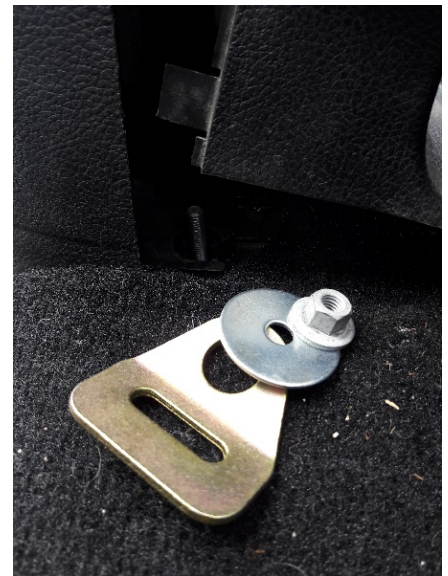
Step 11

Grasp the front of the larger style plastic seat belt retractor housing and pop the front apart enough to get the extension wrench and socket onto the previously hidden factory bolt.



Step 12

Loosen the bolt to install the anchor plate and washer included with your installation kit.



Step 13

Press housing and snap back into place with the anchor plate oriented as shown.



Raingler
NETS & GRIPS

Step 14

Feed the lower rear strap around from the outside to inside the cargo area and into the anchor plate previously installed and then back to the cam buckle.

Feed strap through the C101 anchor plate and then back to the cam buckle.



(Shown here fully tightened for illustration)
Do not fully tension yet.



Raingler
NETS & GRIPS

Step 15

Feed the front lower strap through the black anchor plate installed in steps 5-8. Feed back into the cam buckle but do not fully tension yet.



Step 16

Tension the net now with all straps loosely installed. This may take a little trial and error depending on your Jeep and installed methods. Generally, we like to fully tighten the lower straps and then the top two and finally the middle or side straps (if equipped).

NOTE: Make sure that the soft top mechanism clears going up and down and all seat belts operate freely and as intended before proceeding to final step.



Raingler
NETS & GRIPS

Step 17

Wrap and tie up loose ends and ENJOY!

See video here for details:

<https://vimeo.com/316588617>



Thank you for purchasing Raingler Nets.
If you have any questions please contact us,
we are here to help!

See all our install videos on Vimeo!
<https://vimeo.com/raingler>

Raingler
NETS & GRIPS

866-905-7625 | Tech@RAINGLER.com | Raingler.com