

4

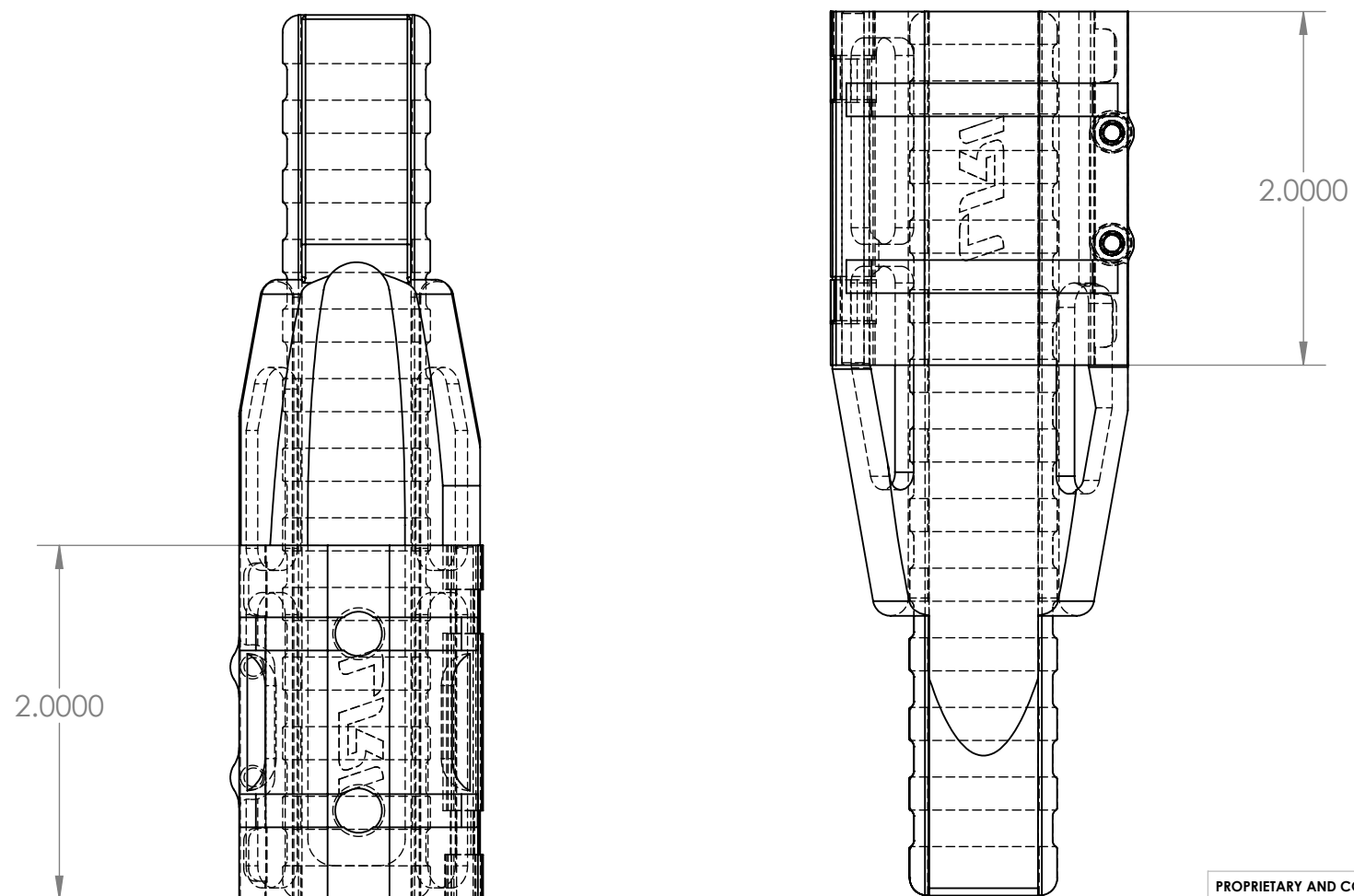
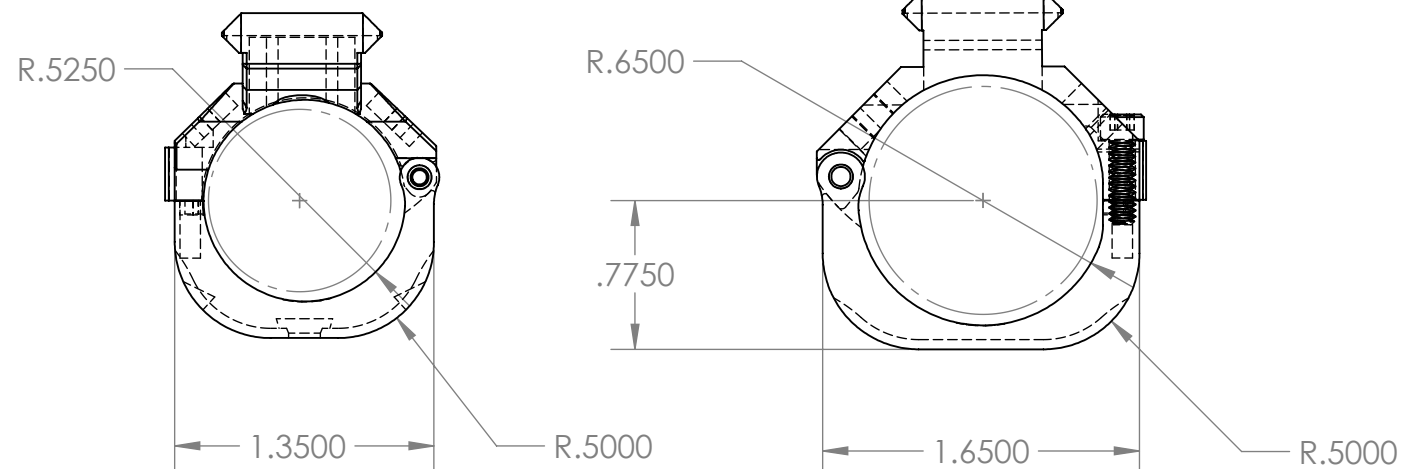
3

2

1

NARROW

VARMINT



LRI Narrow and Varminter EFR mount installation notes:

Machine a pocket in forend applicable to the application referencing the provided dimensions. Note that the barrel ultimately determines the installed height and axis that the mount orients to. It is advised to wrap the barrel with two bands of a durable tape so that the mount assembly can serve as its own register when epoxying the base to the stock. Further, it is advised to use a level across the top of the STENAG base and the receiver to ensure the axis is parallel. The base is designed to sit flush to the showline of the stock at the parting seam where the hardware threads into it. This however is ultimately determined by the installed height of the barreled action. If the action is to ever be bedded to the stock, we strongly suggest that it be done first and that the final presentation height of the receiver be 50/50 to the showline. (Half in/Half out)

The print details a .500" corner radius on the bottom of base piece. A square pocket can be machined in the stock to make installation easier. The radius serves only as weight reduction of the assembly.

Our bases feature lugs on the bottom side intended to be saturated with resin during the installation process. It is also a good practice to wash the parts in hot/soapy water prior to final install to ensure proper adhesion.

It is recommended that a quality two part epoxy be used as the adhesive.

PROPRIETARY AND CONFIDENTIAL
 THE INFORMATION CONTAINED IN THIS DRAWING IS THE SOLE PROPERTY OF LONGLES, INC. ANY REPRODUCTION IN PART OR AS A WHOLE WITHOUT THE WRITTEN PERMISSION OF LONGRIFLES, INC. IS PROHIBITED.

TOLERANCING: INCHES		NAME	DATE	LONGRIFLES, INC.
ANGULAR: +/- .5° LINEAR AND RADIUS: .01" = +/- .005" .001" = +/- .001" .0001" = +/- .0005"		DRAWN	C. DIXON	
INTERPRET GEOMETRIC TOLERANCING PER:		CHECKED		TITLE:
MATERIAL				LRI STD AND VARMINT EFR MOUNTS STOCK INLETING REFERENCE
FINISH		COMMENTS:		SIZE DWG. NO. REV
DO NOT SCALE DRAWING				B
				SCALE: 1:1 SHEET 1 OF 1

4

3

2

1

B

B

A

A