



# Test Report

Report No.: CTT141214290EN

Date: Dec. 27, 2014

Page 1 of 3

Client: JIHUA HARDWARE PRODUCTS CO., LTD

Address: SHIJIE TOWN, DONGGUAN CITY, GUANGDONG PROVINCE LIU HOUSE TONGDE ROAD  
211

The following merchandise was (were) submitted and identified by client as:

Sample Name: spring clip

Sample Model No.: 1.6\*12\*60

Sample Received Date: Dec. 26, 2014

Completed Date: Dec. 27, 2014

Test Requested: Inspect the migration of certain elements content in the submitted sample.

### Test Method(s) and Equipment(s):

| Test Item(s)                  | Test Method(s)         | Equipment(s) |
|-------------------------------|------------------------|--------------|
| Migration of Certain Elements | Refers to EN 71-3:2013 | ICP - AES    |

Test Result(s): Please refer to next page(s).

### Conclusion(s):

- The test result of the submitted sample **MEETS** requirements on the migration of certain elements of client's limit.

Signed for and on Behalf of CTT

Hill Lee / Technical Manager  
Consumer Testing Technology Co., Ltd.

This test report is issued by the company subject to its General Conditions of Services printed overleaf or available on request and accessible at [www.cttlab.com](http://www.cttlab.com). Attention is drawn to the limitations of liability, indemnification and jurisdictional issues defined therein. Unless otherwise stated the results shown in this report refer only to the sample(s) tested. Without prior written permission of the company, this test report cannot be reproduced, except in full. Items marked with "n" or "m" means they are not accredited by CNAS or CMA, "s" means the item of subcontractor is not accredited by CNAS or CMA.

Consumer Testing Technology Co., Ltd.

No.7, Gongye Beisi Road, Songshanhu High-Tech Industrial Development Park, Dongguan, Guangdong, China.

Tel: 86-0769-8898 9888

Fax: 86-0769-8898 8808

E-mail: [enquiry@cttlab.com](mailto:enquiry@cttlab.com)

Hotline: 400 6789 666

Website: <http://www.cttlab.com>





# Test Report

Report No.: CTT141214290EN

Date: Dec. 27, 2014

Page 2 of 3

Test Result(s): Migration of Certain Elements - Refers to EN 71-3:2013

| Material No. | Description              | Location |
|--------------|--------------------------|----------|
| 1            | Antique red copper metal | Body     |

| Elements             | As           | Ba   | Cd   | Cr   | Hg   | Pb   | Sb   | Se   | Conclusion |
|----------------------|--------------|------|------|------|------|------|------|------|------------|
| Client's Limit (ppm) | 25           | 1000 | 75   | 60   | 60   | 90   | 60   | 500  |            |
| RL (ppm)             | 2.5          | 5    | 5    | 5    | 5    | 5    | 5    | 5    |            |
| Material No.         | Result (ppm) |      |      |      |      |      |      |      |            |
| 1                    | N.D.         | N.D. | N.D. | N.D. | N.D. | N.D. | N.D. | N.D. | PASS       |

- Note:
1. ppm = part per million (mg/kg).
  2. N.D. = Not Detected (< RL).
  3. RL = Report Limit.

This test report is issued by the company subject to its General Conditions of Services printed overleaf or available on request and accessible at [www.cttlab.com](http://www.cttlab.com). Attention is drawn to the limitations of liability, indemnification and jurisdictional issues defined therein. Unless otherwise stated the results shown in this report refer only to the sample(s) tested. Without prior written permission of the company, this test report cannot be reproduced, except in full. Items marked with "n" or "m" means they are not accredited by CNAS or CMA, "s" means the item of subcontractor is not accredited by CNAS or CMA.

Consumer Testing Technology Co.,Ltd.

No.7, Gongye Beisi Road, Songshanhu High-Tech Industrial Development Park, Dongguan, Guangdong, China.  
Tel: 86-0769-8898 9888 Fax:86-0769-8898 8808 E-mail: [enquiry@cttlab.com](mailto:enquiry@cttlab.com) Hotline:400 6788 666  
Website: <http://www.cttlab.com>



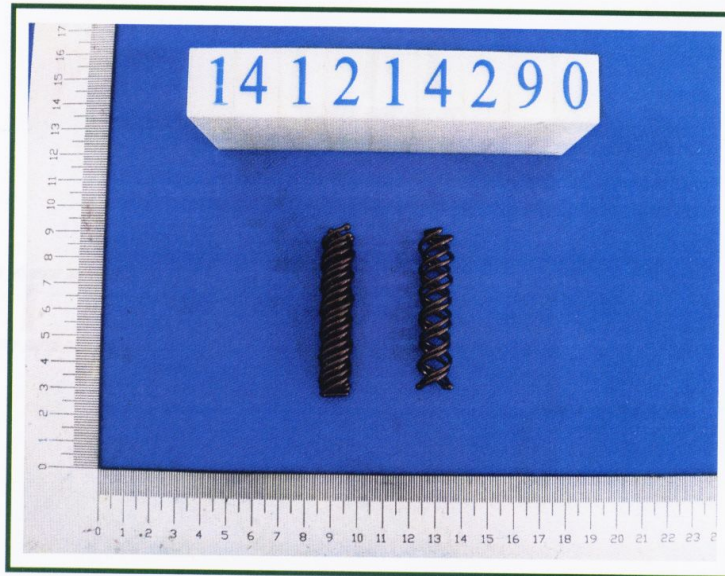
# Test Report

Report No.: CTT141214290EN

Date: Dec. 27, 2014

Page 3 of 3

Photo of Sample:



\*\*\*End of Report\*\*\*

This test report is issued by the company subject to its General Conditions of Services printed overleaf or available on request and accessible at [www.cttlab.com](http://www.cttlab.com). Attention is drawn to the limitations of liability, indemnification and jurisdictional issues defined therein. Unless otherwise stated the results shown in this report refer only to the sample(s) tested. Without prior written permission of the company, this test report cannot be reproduced, except in full. Items marked with "n" or "m" means they are not accredited by CNAS or CMA, "s" means the item of subcontractor is not accredited by CNAS or CMA.

Consumer Testing Technology  
Co.,Ltd.

No.7, Gongye Beisi Road, Songshanhu High-Tech Industrial Development Park, Dongguan, Guangdong, China.

Tel: 86-0769-8898 9888

Fax: 86-0769-8898 8808

E-mail: [enquiry@cttlab.com](mailto:enquiry@cttlab.com)

Hotline: 400 6789 666

Website: <http://www.cttlab.com>

