



# Test Report

Report No.: CTT190414584EN

Date: Apr. 25, 2019

Page 1 of 6

Client: UNCAS INTERNATIONAL LLC, DBA CRIMZON ROSE

Address: 1600 DIVISION ROAD WEST WARWICK, USA RI02893

The following merchandise was (were) submitted and identified by client as:

Sample Name: 12ON MULTI COLR GLITR SNAP CLP

Sample Model No.: 614850BUR, 614851BUR

P/O No.: 274080, 274081

Buyer: Burlington

Category: Children

Exported to: USA

Manufacturer: SOHOBUCKS CO., LIMITED

Package: 12pcs per card

Sample Received Date: Apr. 24, 2019

Completed Date: Apr. 25, 2019

**Test Result(s):** Please refer to next page(s).

## Conclusion(s):

### Test Item

### Conclusion

- |  |   |
|--|---|
| 1. As per Client's requirement reference to California Proposition 65 –Total Lead (Pb) Content   | P |
| 2. As per Client's requirement reference to California Proposition 65–Total Cadmium (Cd) Content | P |
| 3. As per Client's requirement reference to California Proposition 65–Phthalates Content         | P |
- Remark: P=Pass; F=Fail; NC=No Comment; NA=Not Applicable.

Signed for and on Behalf of CTT

*Hilary He*



Hilary He / Technical Manager  
Consumer Testing Technology Co., Ltd.

This test report is issued by the company subject to its General Conditions of Services printed overleaf or available on request and accessible at [www.cttlab.com](http://www.cttlab.com). Attention is drawn to the limitations of liability, indemnification and jurisdictional issues defined therein. Unless otherwise stated the results shown in this report refer only to the sample(s) tested. Without prior written permission of the company, this test report cannot be reproduced, except in full. Any inquiry about this report, please raise from the date of receipt of the report within 30 days, overdue will not be accept. Items marked with "n" means they are not accredited by CNAS, "s" means the item of subcontractor. All or Part of items of this report are not in the accredited scope of CMA and cannot be as domestic social impartiality proof data

Dongguan Consumer Testing  
Technology Co., Ltd.

No.7, Gongye Beisi Road, Songshanhu High-Tech Industrial Development Park, Dongguan, Guangdong, China.  
Tel: 86-0769-8898 9888 Fax: 86-0769-8898 8808 E-mail: [enquiry@cttlab.com](mailto:enquiry@cttlab.com)  
Website: <http://www.cttlab.com>

Hotline: 400 6789 666



**Test Result(s):**

Total Lead

Method:

Metal - With reference to CPSC-CH-E1001-08.3

Nonmetal - With reference to CPSC-CH-E1002-08.3

Surface coating - With reference to CPSC-CH-E1003-09.1, analyzed by Atomic Absorption Spectroscopy (AAS) or Inductively Coupled Plasma Optical Emission Spectroscopy (ICP-OES).

Material No.	Description	Location	Client's Limit(mg/kg)	Result (mg/kg)	Conclusion
1	Silvery metal	Hairpin	40	N.D.	PASS
2	Silvery metal	Fixed axis	40	N.D.	PASS
3	Transparent glue	Glue	40	N.D.	PASS
4	Rose red plastic	Hairpin ornament paillette	40	N.D.	PASS
5	Purple plastic	Hairpin ornament paillette	40	N.D.	PASS
6	Silvery plastic	Hairpin ornament paillette	40	N.D.	PASS
7	Lake blue plastic	Hairpin ornament paillette	40	N.D.	PASS
8	Pink plastic	Hairpin ornament paillette	40	N.D.	PASS
9	Silvery iridescence plastic	Hairpin ornament paillette	40	N.D.	PASS

- Note:**
1. mg/kg = milligram per kilogram(ppm).
  2. N.D. = Not Detected (< RL).
  3. RL = Reporting Limit (Metal material is 20 mg/kg, others materials are 10 mg/kg).

This test report is issued by the company subject to its General Conditions of Services printed overleaf or available on request and accessible at [www.cttlab.com](http://www.cttlab.com). Attention is drawn to the limitations of liability, indemnification and jurisdictional issues defined therein. Unless otherwise stated the results shown in this report refer only to the sample(s) tested. Without prior written permission of the company, this test report cannot be reproduced, except in full. Any inquiry about this report, please raise from the date of receipt of the report within 30 days, overdue will not be accept. Items marked with "n" means they are not accredited by CNAS, "s" means the item of subcontractor. All or Part of items of this report are not in the accredited scope of CMA and cannot be as domestic social impartiality proof data



**Test Result(s):**

Total Cadmium (Cd)

Method:

Metal - With reference to CPSC-CH-E1001-08.3

Nonmetal - With reference to CPSC-CH-E1002-08.3

Surface coating - With reference to CPSC-CH-E1003-09.1, analyzed by Atomic Absorption Spectroscopy (AAS) or Inductively Coupled Plasma Optical Emission Spectroscopy (ICP-OES).

Material No.	Description	Location	Client's Limit(mg/kg)	Result (mg/kg)	Conclusion
1	Silvery metal	Hairpin	40	N.D.	PASS
2	Silvery metal	Fixed axis	40	N.D.	PASS
3	Transparent glue	Glue	40	N.D.	PASS
4	Rose red plastic	Hairpin ornament paillette	40	N.D.	PASS
5	Purple plastic	Hairpin ornament paillette	40	N.D.	PASS
6	Silvery plastic	Hairpin ornament paillette	40	N.D.	PASS
7	Lake blue plastic	Hairpin ornament paillette	40	N.D.	PASS
8	Pink plastic	Hairpin ornament paillette	40	N.D.	PASS
9	Silvery iridescence plastic	Hairpin ornament paillette	40	N.D.	PASS

- Note:**
1. mg/kg = milligram per kilogram(ppm).
  2. N.D. = Not Detected (< RL).
  3. RL (Reporting Limit) = 2 mg/kg.

This test report is issued by the company subject to its General Conditions of Services printed overleaf or available on request and accessible at [www.cttlab.com](http://www.cttlab.com). Attention is drawn to the limitations of liability, indemnification and jurisdictional issues defined therein. Unless otherwise stated the results shown in this report refer only to the sample(s) tested. Without prior written permission of the company, this test report cannot be reproduced, except in full. Any inquiry about this report, please raise from the date of receipt of the report within 30 days, overdue will not be accept. Items marked with "n" means they are not accredited by CNAS, "s" means the item of subcontractor. All or Part of items of this report are not in the accredited scope of CMA and cannot be as domestic social impartiality proof data



**Test Result(s):**

Phthalates content

Method: With reference to CPSC-CH-C1001-09.4, analyzed by Gas Chromatograph-Mass Spectrometry (GC-MS).

Material No.	Description	Location
3	Transparent glue	Glue
4	Rose red plastic	Hairpin ornament paillette
5	Purple plastic	Hairpin ornament paillette
6	Silvery plastic	Hairpin ornament paillette
7	Lake blue plastic	Hairpin ornament paillette
8	Pink plastic	Hairpin ornament paillette
9	Silvery iridescence plastic	Hairpin ornament paillette

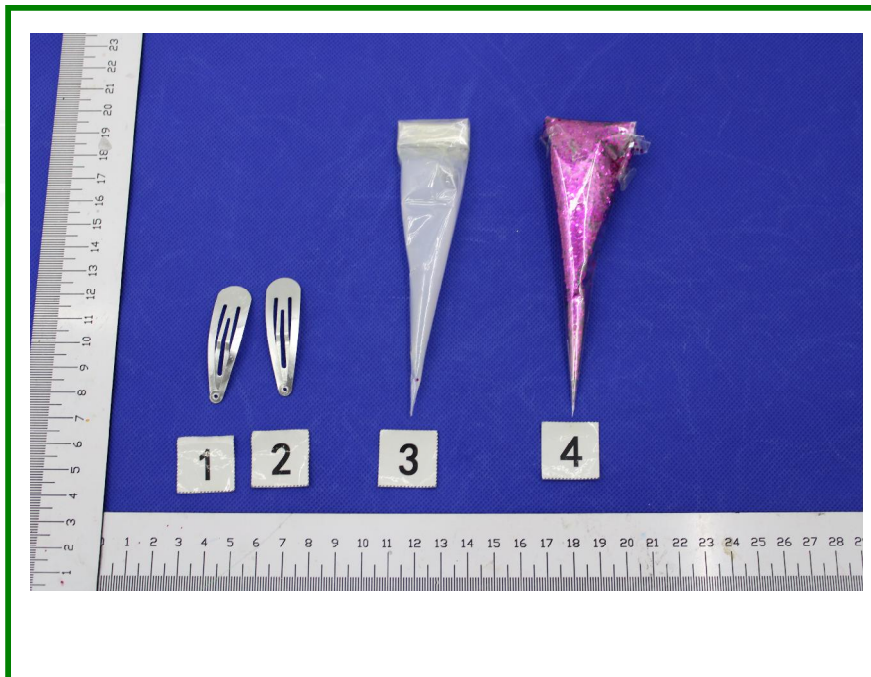
Substances	DBP	BBP	DEHP	DINP	DNOP	DIDP	DnHP	Conclusion
CAS No.	84-74-2	85-68-7	117-81-7	28553-12-0/ 68515-48-0	117-84-0	26761-40-0/ 68515-49-1	84-75-3	
Client's Limit (mg/kg)	1000	1000	1000	1000	1000	1000	1000	
RL (mg/kg)	50	50	50	100	50	100	50	
Material No.	Result (mg/kg)							
3	N.D.	N.D.	N.D.	N.D.	N.D.	N.D.	N.D.	PASS
4	N.D.	N.D.	N.D.	N.D.	N.D.	N.D.	N.D.	PASS
5	N.D.	N.D.	N.D.	N.D.	N.D.	N.D.	N.D.	PASS
6	N.D.	N.D.	N.D.	N.D.	N.D.	N.D.	N.D.	PASS
7	N.D.	N.D.	N.D.	N.D.	N.D.	N.D.	N.D.	PASS
8	N.D.	N.D.	N.D.	N.D.	N.D.	N.D.	N.D.	PASS
9	N.D.	N.D.	N.D.	N.D.	N.D.	N.D.	N.D.	PASS

- Note:**
1. mg/kg = milligram per kilogram(ppm).
  2. N.D. = Not Detected (< RL).
  3. RL = Reporting Limit.

This test report is issued by the company subject to its General Conditions of Services printed overleaf or available on request and accessible at [www.cttlab.com](http://www.cttlab.com). Attention is drawn to the limitations of liability, indemnification and jurisdictional issues defined therein. Unless otherwise stated the results shown in this report refer only to the sample(s) tested. Without prior written permission of the company, this test report cannot be reproduced, except in full. Any inquiry about this report, please raise from the date of receipt of the report within 30 days, overdue will not be accept. Items marked with "n" means they are not accredited by CNAS, "s" means the item of subcontractor. All or Part of items of this report are not in the accredited scope of CMA and cannot be as domestic social impartiality proof data

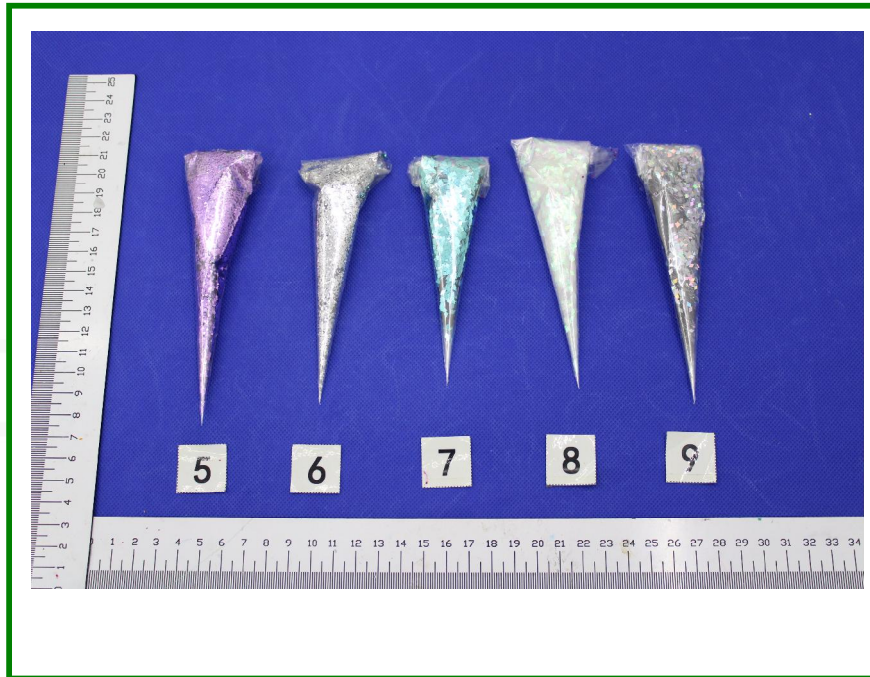


Photo of Sample:



This test report is issued by the company subject to its General Conditions of Services printed overleaf or available on request and accessible at [www.cttlab.com](http://www.cttlab.com). Attention is drawn to the limitations of liability, indemnification and jurisdictional issues defined therein. Unless otherwise stated the results shown in this report refer only to the sample(s) tested. Without prior written permission of the company, this test report cannot be reproduced, except in full. Any inquiry about this report, please raise from the date of receipt of the report within 30 days, overdue will not be accept. Items marked with "n" means they are not accredited by CNAS, "s" means the item of subcontractor. All or Part of items of this report are not in the accredited scope of CMA and cannot be as domestic social impartiality proof data

Photo of Sample:



\*\*\*End of Report\*\*\*

This test report is issued by the company subject to its General Conditions of Services printed overleaf or available on request and accessible at [www.cttlab.com](http://www.cttlab.com). Attention is drawn to the limitations of liability, indemnification and jurisdictional issues defined therein. Unless otherwise stated the results shown in this report refer only to the sample(s) tested. Without prior written permission of the company, this test report cannot be reproduced, except in full. Any inquiry about this report, please raise from the date of receipt of the report within 30 days, overdue will not be accept. Items marked with "n" means they are not accredited by CNAS, "s" means the item of subcontractor. All or Part of items of this report are not in the accredited scope of CMA and cannot be as domestic social impartiality proof data