



WIFI MODULE

ORIGINAL MANUAL
GEBRUIKSAANWIJZING
ORIGINALBETRIEBSANLEITUNG
NOTICE ORIGINALE
BETJENINGSVEJLEDNING
ANVÄNDARMANUAL
INSTRUKCJA OBSŁUGI




NORSUP



- EN
- NL
- DE
- FR
- DK
- SE
- PL

WIFI MODULE

EN	ORIGINAL MANUAL	4
NL	GEBRUIKSAANWIJZING	12
DE	ORIGINALBETRIEBSANLEITUNG	20
FR	NOTICE ORIGINALE	28
DA	BETJENINGSVEJLEDNING	36
SV	ANVÄNDARMANUAL	44
PL	INSTRUKCJA OBSŁUGI	53

DOWNLOAD NORSUPONE APP:



www.norsup.eu



WIFI MODULE

CONTENTS:

1. USER PRIVACY INSTRUCTIONS	6
2. DESCRIPTION	6
3. TECHNICAL PARAMETERS	6
4. INSTALLATION	6
5. FUNCTIONAL DESCRIPTION	6
6. ACCOUNT LOGIN	7
7. ADD DEVICE	7
8. WIFI CONFIGURE NETWORK	8
9. DEVICE MANAGEMENT	10

EN

NL

DE

FR

DK

SE

PL

Errors and technical modifications subject to change, reproduction as well as electronic duplication only with our written permission.

© NORSUP

Edition: 11.2020



WIFI MODULE

1. USER PRIVACY INSTRUCTIONS

We take your privacy very seriously and we promise to inform you how we use the data. Users' private data, such as mailboxes, address, before uploading to the cloud, we will get your permission, and we will work hard to protect your data security.

2. DESCRIPTION

- Receive data signal from cloud server and transmit to the main device;
- Receive data signal from main device and transmit to cloud server;
- To achieve remote upgrade the WIFI module baseplate MCU by cloud server;
- To achieve the remote upgrade of the main device by WIFI module baseplate MCU.

3. TECHNICAL PARAMETERS

· OPERATING VOLTAGE:

DC8V~12V (Recommended value 12V)

· OPERATING CURRENT:

Max. recurrent peak 1A, average standby current 50mA

· TEMP. RANGE:

Operating Temp.: -30 ~+70 ; Storage Temp.: -40 ~+85

· LED INDICATOR LIGHT:

4 lights, Network configuration indicator, router connection indicator, cloud server connection indicator, 485 communication indicator;

· DIMENSION (L*W*H)

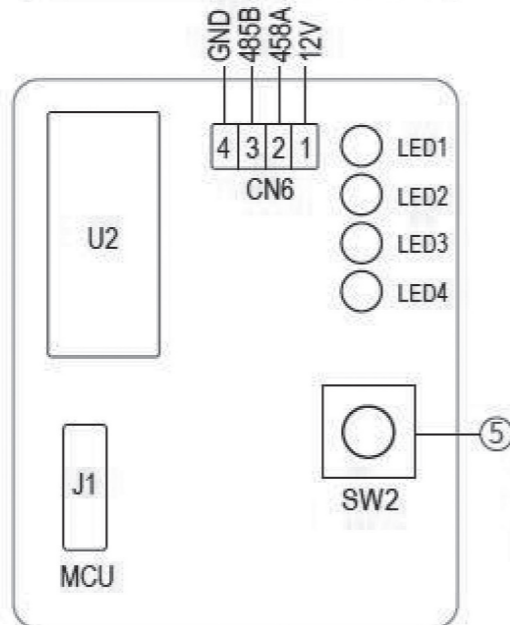
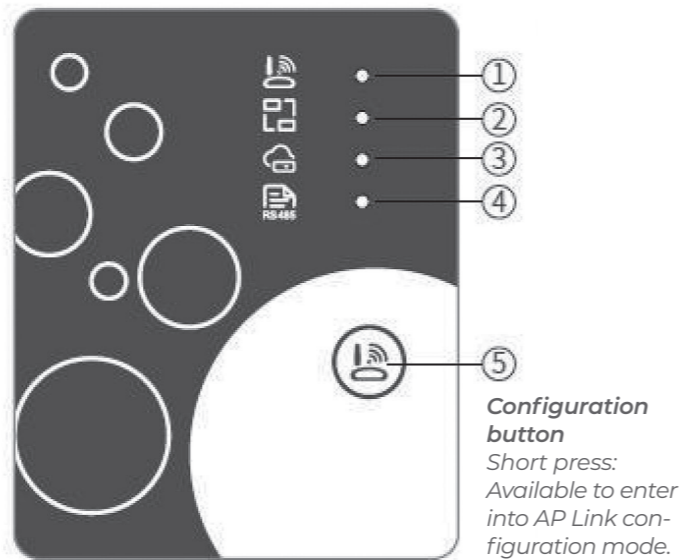
78mm*63mm*24mm

4. INSTALLATION

- There is a magnet on the back of the WIFI module, it can be installed indoors or outdoors, and avoid direct sunlight;
- Please scan the following QR code to download APP;



5. FUNCTIONAL DESCRIPTION



Item	Name	Long light	Slow flash	Extinguish
1	Network configuration indicator	Configuring Network	Smart-Link configuring	Done
2	Router connection indicator	Normal	Abnormal	-
3	Cloud server connection indicator	Normal	Abnormal	-
4	485 communication indicator	Normal	Abnormal	-

WIFI MODULE

6. ACCOUNT LOGIN

Use email address and password to register, login or reset the password.

1. Account Registration: To register an account, click **1** (Fig.1) to jump to the Account Registration interface, fill in the relevant information and click **2** to receive verification code, while completed the application information, click **3** to read the details of the Privacy Policy, then click **4** to agree, and click **5**, registration is done.

2. Please note, the valid time of one verification code is 15min, please fill in the verification code within 15min, otherwise you need to ask for a new one. Log in: Follow the instructions on the page (Fig.1), enter your registered email address and password, click **6** and jump to device list;

3. Forgot Password: While forget your password, click **7** (Fig.1), jump

to the Forgot Password interface (Fig.3). Follow the instructions on the page, fill in the relevant informations, click **8** to receive verification code from your mailbox, click **9** to confirm and password reset is done.

7. ADD DEVICE

After log in, displays My Device interface (Fig. 4), follow the instruction to add WIFI or DTU.

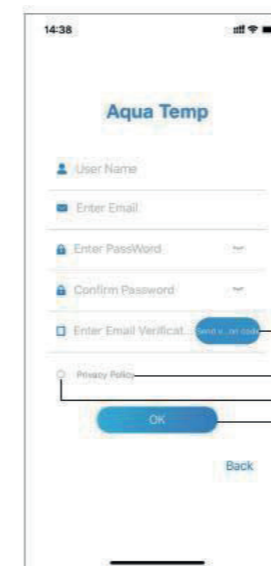


Fig. 2 Account Registration interface

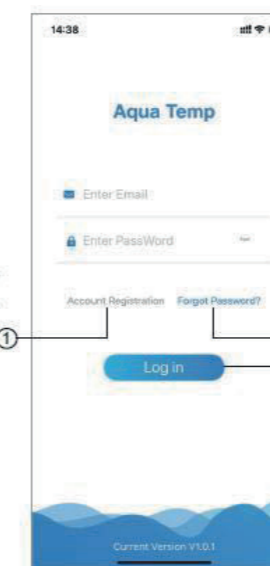


Fig. 1 Login interface

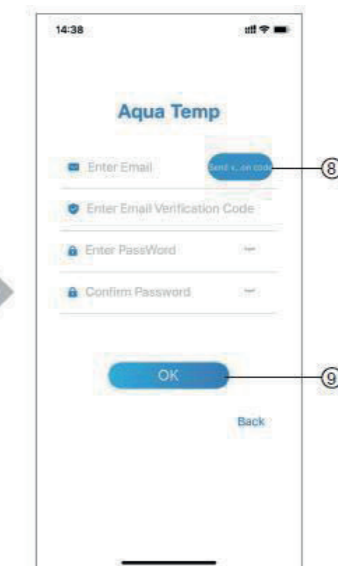


Fig. 3 Forgot Password interface

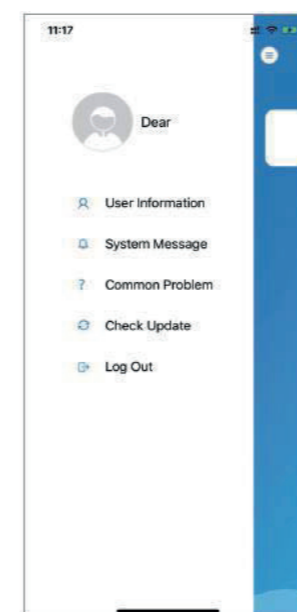


Fig. 5 The left-hand menu

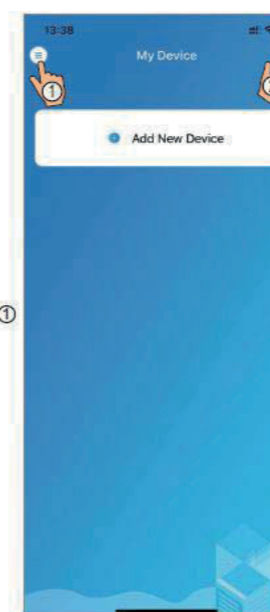


Fig. 4 My Device interface

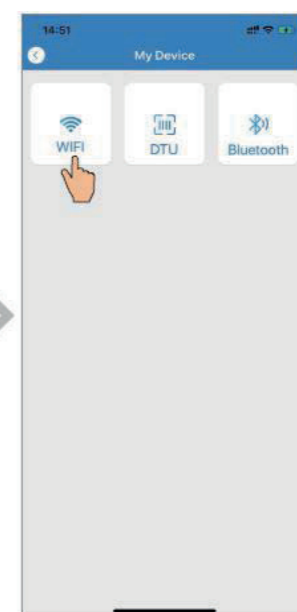


Fig. 6 Add Device interface

WIFI MODULE

8 WIFI CONFIGURE NETWORK

1. Follow the instructions on the page (Fig.7), press button on module and hold for 1s till two lights on, then AP connection is activated, click **10** to confirm, click **11** to turn the page;
2. Click **12** to enter the WIFI password for the current connection, click **13** to confirm;
3. Jump to system settings, connect specified WIFI, click **14** to select the "Smart_AP_xxx", click **15** to popup window(Fig.10), follow the instruction and then jump to WIFI setting interface (Fig.11);



Fig. 7

WIFI Module On interface

Fig. 8

Enter password interface

Fig. 9

Connect specified WIFI

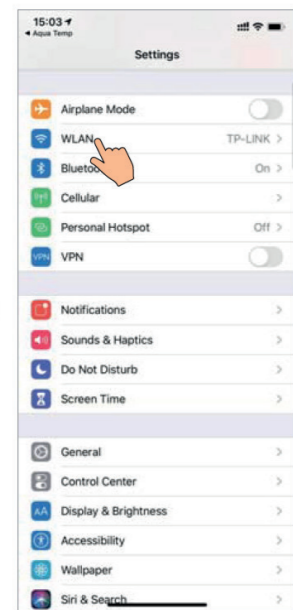


Fig. 10

Setting interface

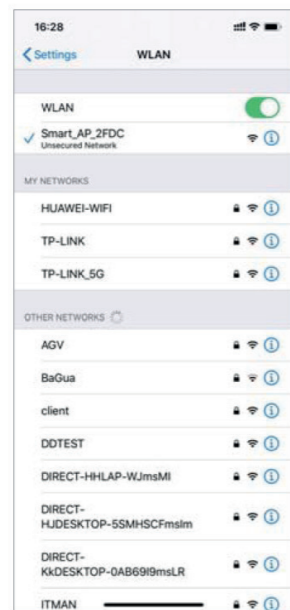


Fig. 11

WIFI setting interface

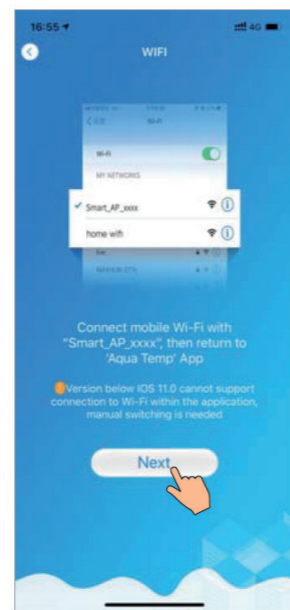


Fig. 12

Connect specified WIFI

WIFI MODULE

4. Slide the page back to configure network interface (Fig. 12), click **16** to join WLAN Network "Private?", click **17** to cancel, click **18** to turn next page(Fig. 13); click **19** to bond device (Fig. 14);
5. Click "OK" to allow this APP to use the camera for scanning the barcode on heat pump unit (Fig.15); click "OK", device bond is done (Fig.16);
6. After WIFI and DTU bonding is done, and jump back to My Device (Fig. 17).

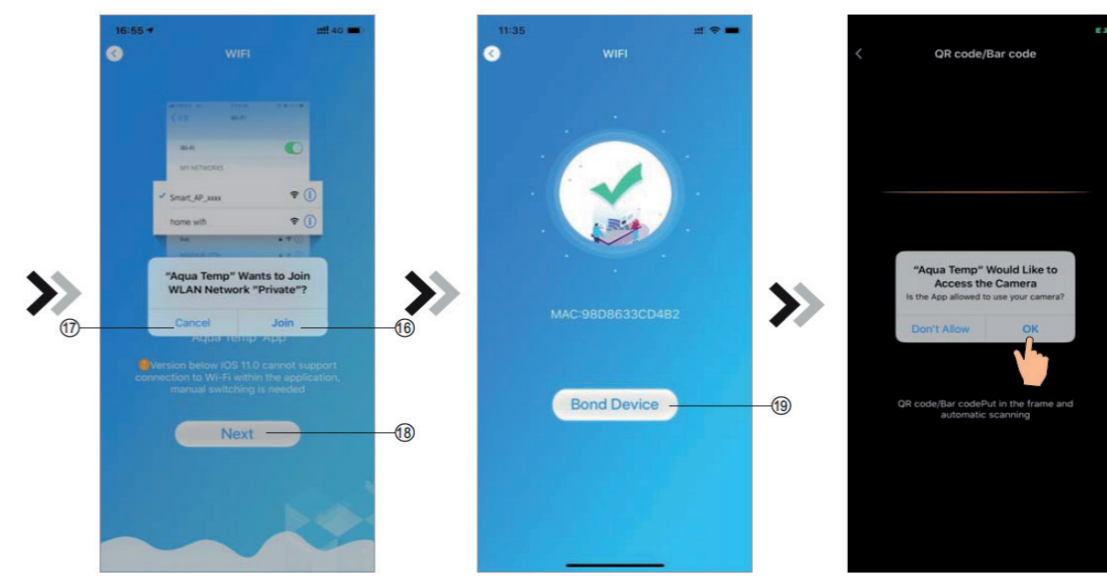


Fig. 13

Configure Network interface

Fig. 14

Bond Device interface

Fig. 15

Scanning interface

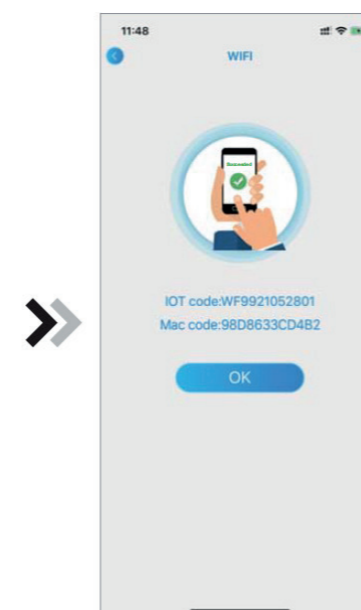


Fig. 16

Bond device done interface

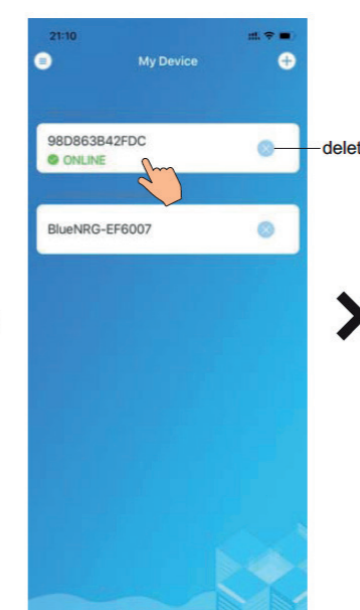


Fig. 17

Device management interface

WIFI MODULE

9. DEVICE MANAGEMENT

Device management operations are as below:

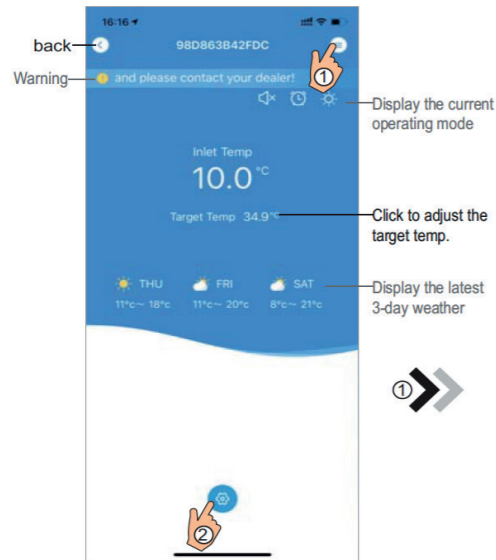


Fig. 18
Device Main interface

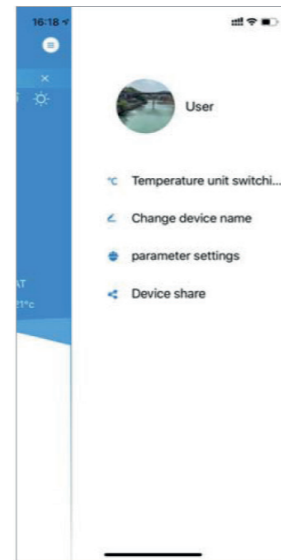


Fig. 19
The right-hand menu interface

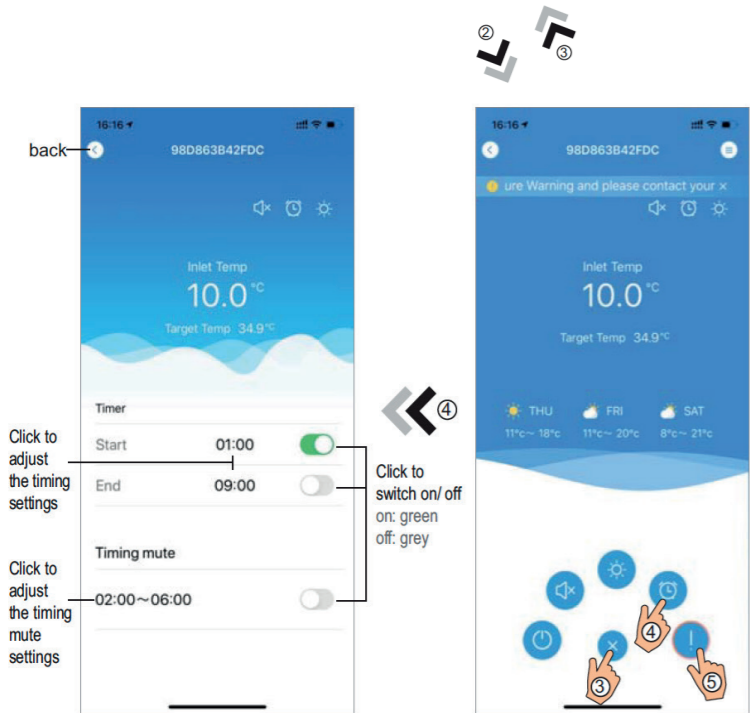


Fig. 20
Device Main interface



Fig. 21
Timing Settings interface



Fig. 22
Troubleshooting interface

WIFI MODULE

Icon	Name	Functions
	ON/OFF	Click it to turn on/ off the unit
	Silent Mode Off	Display silent mode off, click it to activate the silent mode
	Silent Mode On	Display silent mode on, click it to turn off the silent mode
	Mode shift	Mode changing: Cooling--Heating--Auto
	Cooling	Display Cooling mode, click it to change operating mode
	Heating	Display Heating mode, click it to change operating mode
	Auto	Display Auto mode, click it to change operating mode
	Timming settings	Click it to jump to the timer on/ off and mute timer setting interface
	Troubleshooting	Click it to jump to the troubleshooting interface
	Menu	Click to unfold or collapse the menu