

Assault Air Bike

Assembly Instructions

Tools Needed:

Box Cutter

6mm Hex Wrench

Phillips Screw Driver

13mm Wrench

22mm Wrench

15mm Wrench



AUTHORIZED DISTRIBUTOR

Step 1: Lay the Assault Airbike Bike box on the ground.



Step 2: Cut the straps and open the bottom of the box.



Step 3: Stand the box up with the open end down.



Step 4: Remove the box.

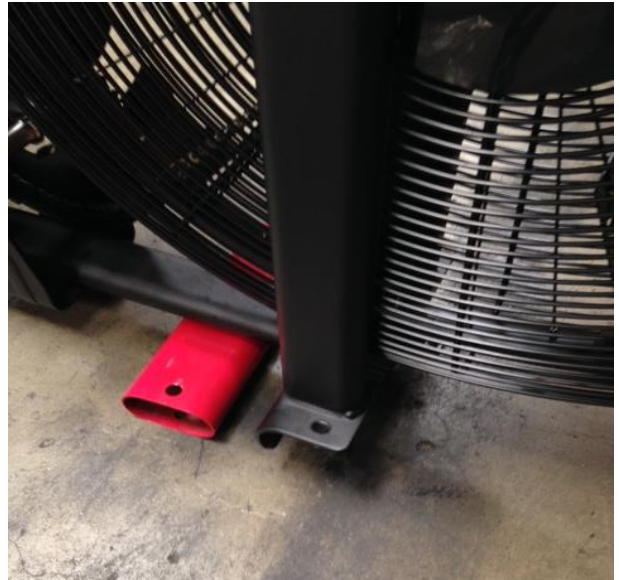


Step 5: Remove all of the protective foam and plastic, and lay out all of the included parts.

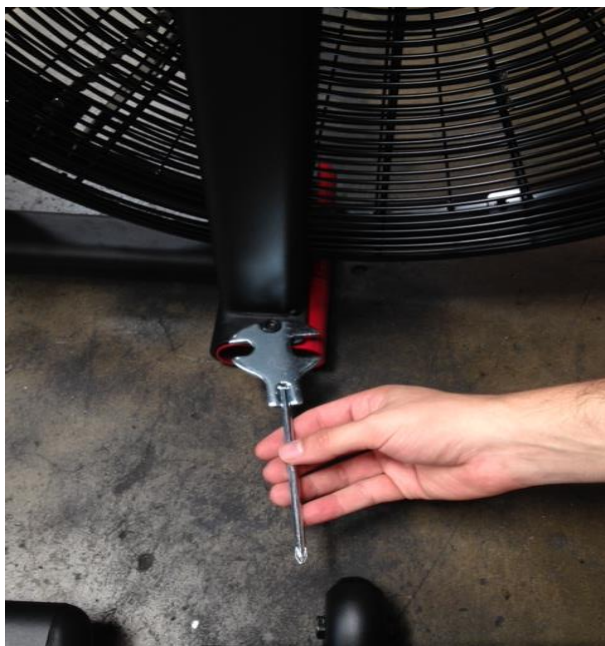


Step 7: Place the Red tube underneath the frame to prop the front end of the bike up.

Locate two #58 Screws, two #34 Lock washers, and two #35 Flat washers.



Step 6: Using the provided multi tool remove the nuts securing the red transport tube. **Note: After assembly this red tube can be discarded and will not be used along with the nuts and bolts that held it in place.**



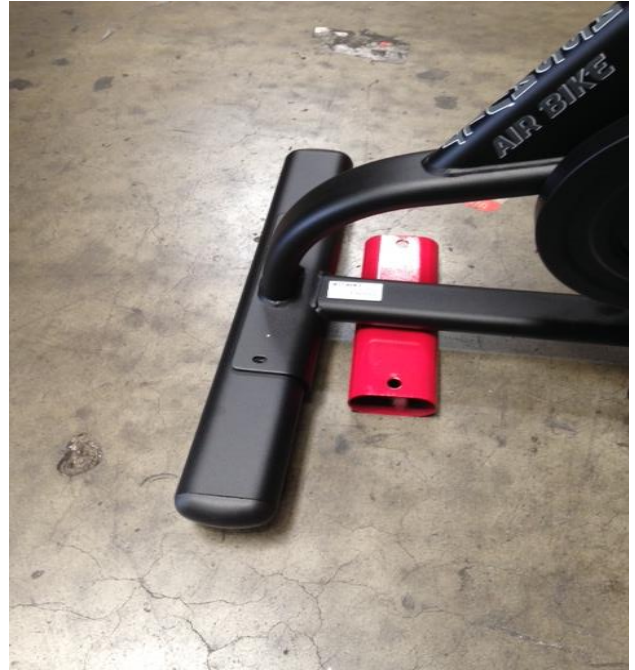
Step 8: Install the front stabilizer.



Step 9: Using the provided 6mm Allen wrench, tighten the two #58 Screws, two #34 Lock washers, and two #35 Flat washers to secure the front stabilizer bar.



Step 10: Using the red tube now prop up the rear of the bike to allow for easier installation of the rear stabilizer.



Locate two #58 Screws, two #34 Lock washers, and two #35 Flat washers.



Step 11: Using the provided 6mm Allen wrench, tighten the two #58 Screws, two #34 Lock washers, and two #35 Flat washers to secure the rear stabilizer bar.



Step 13: Route the Speed Sensor cable through the console mast.



Step 12: Locate the speed sensor wire and remove the twist tie.



Step 14: Pull the Speed Sensor cable so there is no slack in the cable.



Step 15: When installing the Computer Mast make sure the Speed Sensor Cable does not get pinched between the frame and the mast.



Locate two #58 Screws, two #34 Lock washers, and two #35 Flat washers.



Step 16: Using the provided 6mm Allen wrench, tighten the two #58 Screws, two #34 Lock washers, and two #35 Flat washers to secure the Console Mast.



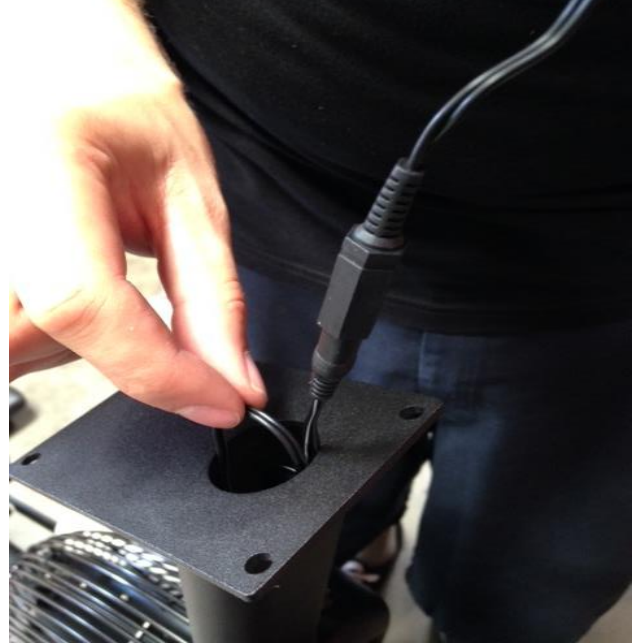
Step 17: Locate the pair of double A (AA) batteries and install them into the computer console.



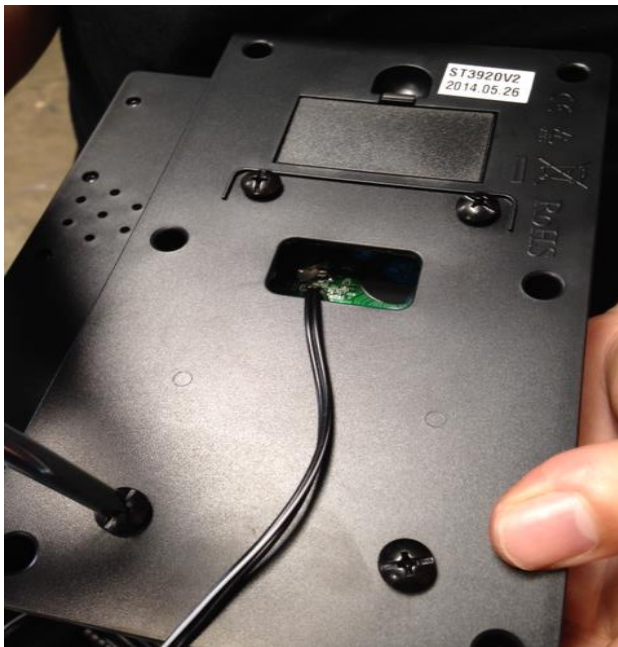
Step 18: Install the male and female Speed Sensor connections and make sure they are completely pressed into place.



Step 20: When installing the Computer Console, tuck the excess length of Speed Sensor cable into the Computer Mast.



Step 19: Using the provided multi-tool remove the four Phillips screws from the back of the Computer Console.



Step 21: Using the provided multi-tool reinstall the four Phillips screws onto the back of the Computer Console. Make sure not to pinch the Speed Sensor Cable.



Step 22: Remove the Zip Ties and protective foam from the Left and Right sides of the bike that are securing the Pedal Support Tubes.



Step 23: Locate the Left and Right Handle Bar Assemblies.



Step 24: Install the Handle Bar Assemblies by rotating the peg Clockwise. **NOTE:** Make sure they are being threaded on straight and are not being cross-threaded.



Step 25: Using the provided multi-tool tighten the 22mm nut between the handle bar and the frame. **NOTE:** Make sure to tighten this nut tightly so there is no movement and there are no threads exposed.



Locate two #37 Pivot Pins, four #84 washers and two #85 locknuts.



Step 26: Install the #37 Pivot Pin and #84 washer onto the handlebar.



Step 27: Once the #37 Pivot Pin and #84 washer onto the handlebar install the linkage arm.



Step 28: Once the #37 Pivot Pin is inserted into the linkage arm install the #84 washer and then the #85 locknut.



Step 29: Using the provided multi tool and 6mm Allen wrench tighten the #37 pivot pin and #85 Locknut. When tight make sure there is no extra movement in the linkage arm.



Step 30: Using the provided 6mm wrench, remove the 6mm Allen screw and washer from the Seat post Assembly.

Step 31: Install the #64 seat. Once the seat is installed replace the 6mm Allen Screw and washer and tighten with the 6mm Allen wrench. Make sure the seat is level and mounted onto the rough part of the seat post.



Step 32: Using the provided multi-tool tighten both 13mm nuts on either side of the seat. **NOTE:** Make sure to tighten both of these nuts evenly to prevent any unwanted movement.

Do not only tighten one side, tighten both evenly.



Step 33: Locate the #15 and #16 Left and Right pedals. They will have L and R stickers noting which they are.



Step 34: Install the #16 Left pedal onto Left crank arm by threading it loosely **COUNTER-CLOCKWISE** and then use the Multi-tool to tighten it the rest of the way. Make sure it is installed tightly. **NOTE:** Only the left side is reverse threaded.



Step 35: Install the #15 Right pedal onto Right crank arm by threading it loosely **CLOCKWISE** and then use the Multi-tool to tighten it the rest of the way. Make sure it is installed tightly. **NOTE:** The right side pedal is threaded normally.

