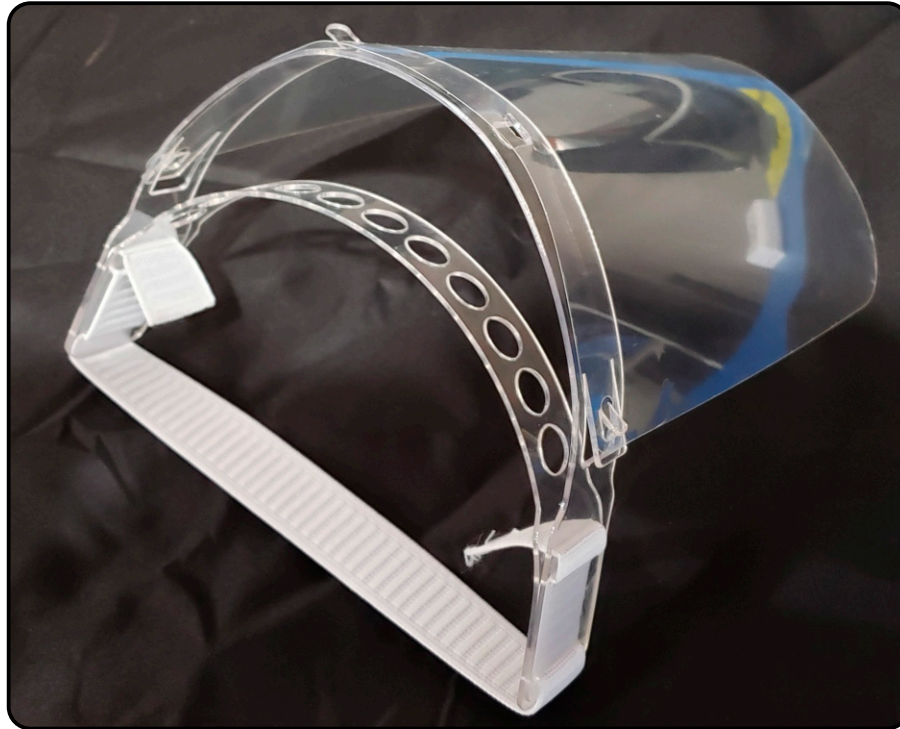
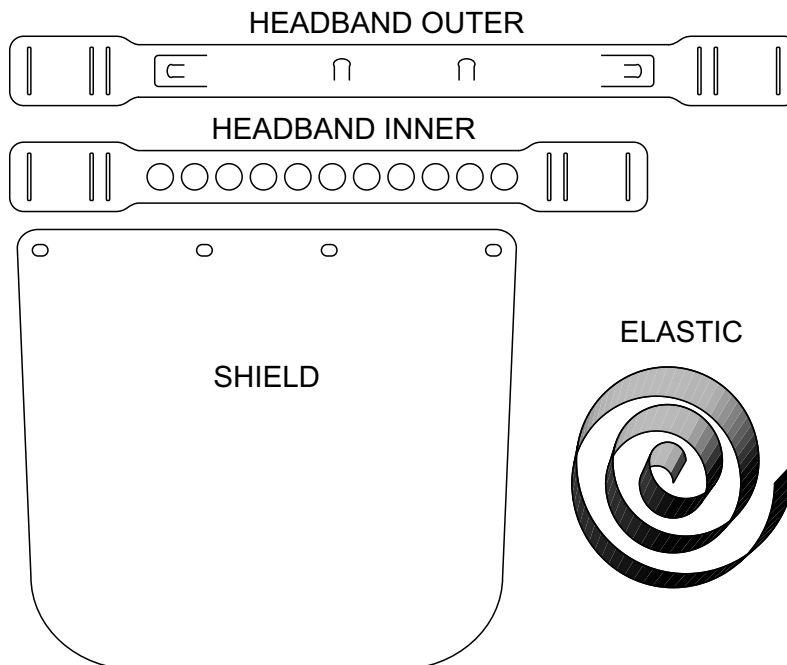


# FACE SHIELD ASSEMBLY

Thank you health care workers!



## COMPONENTS



### **PLANS AND INSTRUCTIONS CAN BE FOUND AT:**

<https://custombrewgear.com/pages/covid-19-face-shield-plans-instructions>

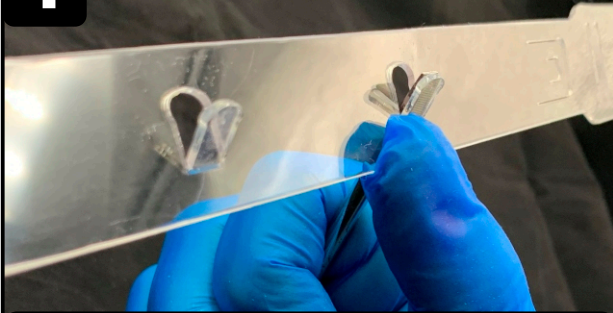
Proto Shield by Mat Thorne and Devin Montgomery is licensed under a Creative Commons Attribution-ShareAlike 4.0 International License. Based on a work at <https://www.prusaprinters.org/prints/25857>.

LEGAL: This design and these instructions are provided for free and as-is. Neither Protohaven nor the creators of the design and instructions offer any warranty or assume any liability for their use.

# FACE SHIELD ASSEMBLY

Thank you health care workers!

**1**



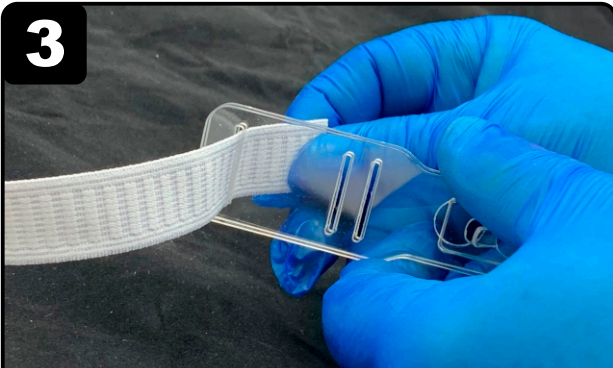
Bend the four tabs out to a 45° using a small screwdriver.

**2**



Line up the outer slits of the two headband pieces

**3**



Pull the elastic through the first hole from the outside (longer piece). Give yourself a few inches for the other two holes.

**4**



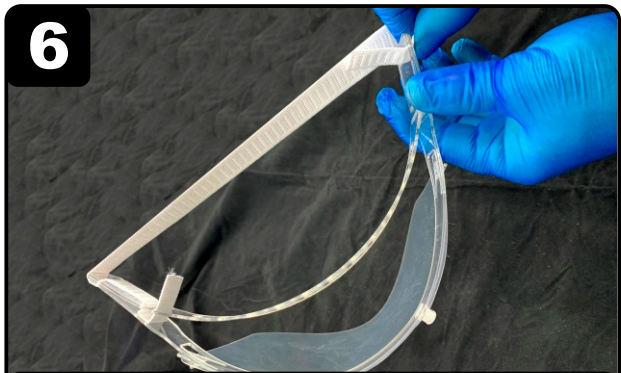
Feed elastic as show here.

**5**



With pieces flat, install the shield by starting at one side and hooking the holes on the tabs.

**6**



Bend the headband to lock the shield in place and install the elastic on other side.

Proto Shield by Mat Thorne and Devin Montgomery is licensed under a Creative Commons Attribution-ShareAlike 4.0 International License. Based on a work at <https://www.prusaprinters.org/prints/25857>.

LEGAL: This design and these instructions are provided for free and as-is. Neither Protohaven nor the creators of the design and instructions offer any warranty or assume any liability for their use.