

3-in-1 Wired Floodlight, Charger and Mount for Arlo Pro 3/Pro 4 and Arlo Ultra/Ultra 2

USER MANUAL



W
WASSERSTEIN

In the Box



wall plate



long screw



adapter with cable



floodlight



4 x wall anchors



USB cable



EVA gasket



8 x cable clips



4 x screws



US, UK, EU plugs

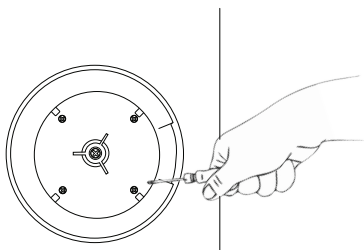
Safety Information

- Disassembling the light head is not recommended as it may cause damage to internal components. The floodlight may not function aptly after disassembling it.
- DO NOT remove the protective LED lens.
- DO NOT look at LEDs that are on for any length of time.

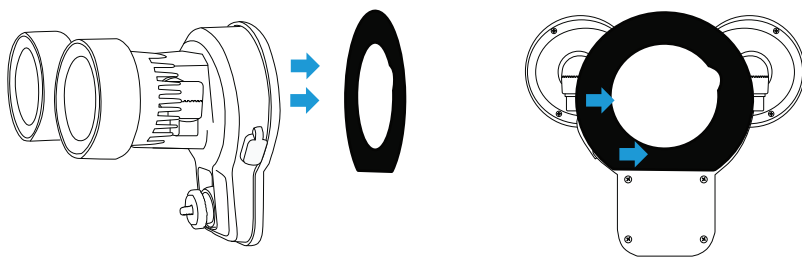
Installing Your Floodlight

Installing the Floodlight to the wall plate

1. Install the wall plate on the wall using the 4 screws (included) and the 4 anchors (included).



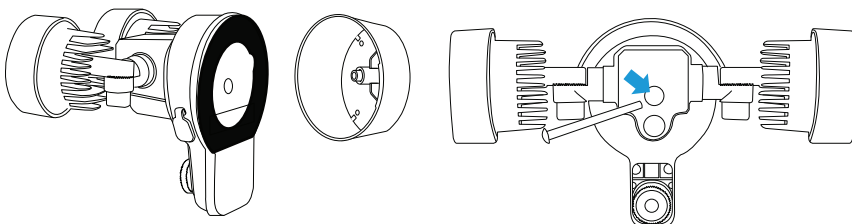
2. Remove the protective tape from the EVA gasket and press the adhesive side firmly against the rear of the floodlight.



Important: Before mounting the floodlight completely, apply the EVA gasket. It prevents water from seeping into the wall plate.

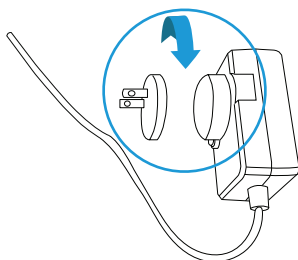
3. Mount the floodlight + EVA gasket taped onto the wall plate.

4. Mount the floodlight onto the wall plate and secure it with the long screw provided.

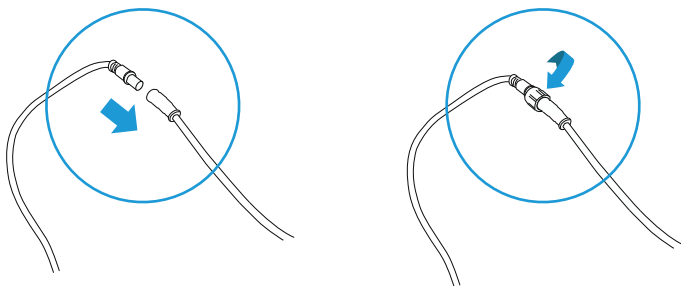


- 5a. Insert the appropriate plug into the adapter; turn clockwise until it clicks.

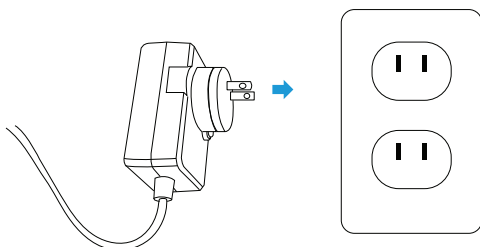
Remarks: 3 x plug heads are included (US, UK, EU).



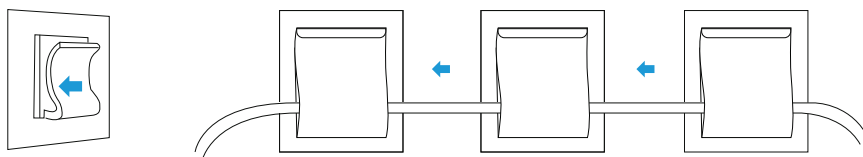
- b. Connect the floodlight cable and adaptor cable together, then screw in the plastic cover.



- c. Plug the adapter onto the wall socket to power the floodlight.

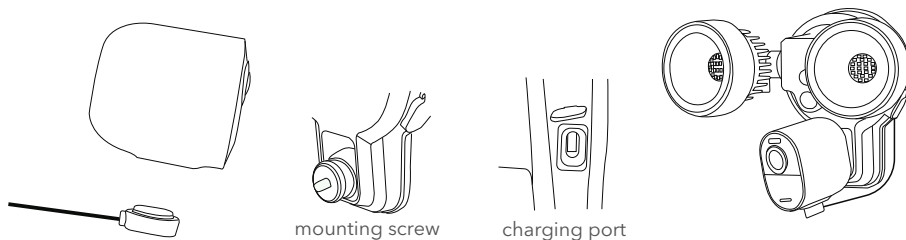


6. Peel the adhesive skins then stick the cable clips onto the wall. Run the wires of the adapter through the cable clips for a better cable management.



Mounting Your Camera

1. To charge your camera via the floodlight, firmly connect the Arlo Pro 3/Pro 4 & Arlo Ultra/Ultra 2 magnetic cable in the magnetic charging port.
2. Screw the camera onto the mount.
3. Open the USB port cap of the floodlight and connect the Arlo Pro 3/Pro 4 & Arlo Ultra/Ultra 2 magnetic cable. Press in firmly.
4. Adjust the camera to your preferred viewing angle.



Important Tips

1. Assess where intruders are most likely to enter and the path they would take. Most intruders enter the home through a back door, patio door, or garage door. Therefore, it is advisable to place the floodlight near the entrances to your home.
2. Mount the floodlight on walls that an intruder would walk alongside, such as a narrow pathway. The motion sensor works best when movements are detected parallel to the floodlight, not towards it.
3. You can also mount the floodlight beside your security camera to illuminate the camera's vision at night.
4. Although the floodlight is weatherproof, it is advisable to mount it to a wall shaded from the rain and sunlight to maximize battery life.

FAQ

1. The floodlight keeps flashing. What should I do?

- Check your connection of all three wires to the house power.
- Check the area around the floodlight as it may be detecting motion.

2. Will the floodlight turn on during the day?

No, the floodlight will only turn on during the night or when the surrounding light is dim.

3. Is a solar panel recommended, or will the hard-wired floodlight keep the camera charged?

It does not require a solar panel as the hard-wired floodlight's USB port will keep the camera powered continuously.

4. After installing the floodlight, how can I confirm that it is working?

Try waving your hands in front of the floodlight. If all of your connections are fine, the floodlight will light up due to the motion. If it does not light up, please check your wiring, especially if the cable colors match. Or, allow up to 10 minutes of reset time for the floodlight without triggering them.

Product Specifications

Materials:	PC + Aluminum
Sensor angle range:	120°
Sensor distance thresholds:	13 to 33 ft (4 to 10 m)
Max LED light intensity:	2000 Lumens
Color temperature:	5500-6500k
Power:	100 - 240 AC 50/60Hz

Arlo Pro 3 is not included.

Arlo Pro 4 is not included.

Arlo Ultra is not included.

Arlo Ultra 2 is not included.

Arlo Pro 3 is a trademark of Arlo Technologies, Inc.

Arlo Pro 4 is a trademark of Arlo Technologies, Inc.

Arlo Ultra is a trademark of Arlo Technologies, Inc.

Arlo Ultra is a trademark of Arlo Technologies, Inc.

Wasserstein is not affiliated with Arlo Technologies, Inc.

Wasserstein is a trademark of Dropcases Ltd.

W

WASSERSTEIN

For more information, visit:

www.wasserstein-home.com

or contact us at:

contact@wasserstein-home.com

Made in China