

Solar Panel for Floodlight Mount Accessory and Blink Outdoor Camera 3rd Gen

USER MANUAL



W

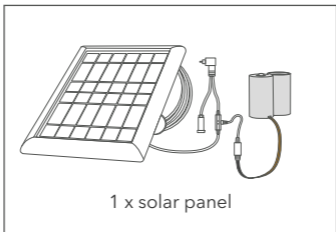
WASSERSTEIN

Thoughtful Products for your Smart Home

About the Solar Panel

This solar panel keeps your Blink Floodlight and Blink Outdoor Camera fully powered using solar energy, eliminating the need for downtime and battery swaps.

In the Box

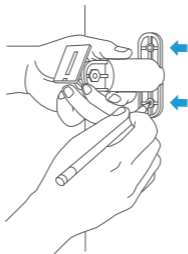


Important Information

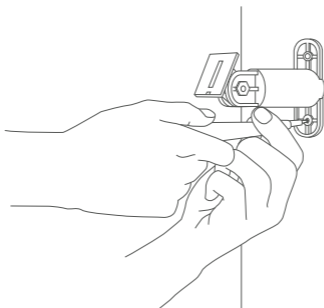
1. Do not fold or bend the power cable or the flat FPC cable connecting the floodlight and camera.
2. Only use with the Blink Floodlight and Blink Outdoor Camera.
3. Make sure you have installed the solar panel and put it under direct sunshine before you connect to the Blink Floodlight and Outdoor camera.

How to Install

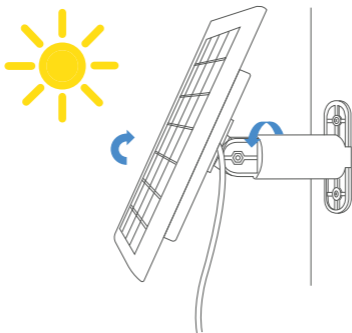
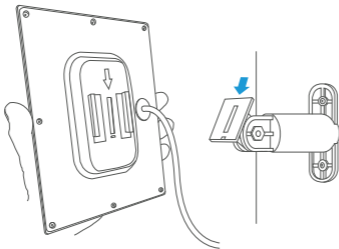
1. Find a sunny location to mount the solar panel near your Blink Floodlight (within 13 ft). Use the mounting bracket and mark the drill holes with a pencil.



2. Drill holes at the two marked positions. Place the included plastic anchors into the holes. Attach the mounting arm to the wall with the screws provided.

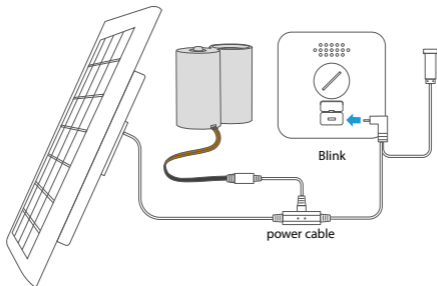


3. Slide the solar panel onto the wall mount. Adjust and rotate the angle of the solar panel for optimum sunlight coverage.

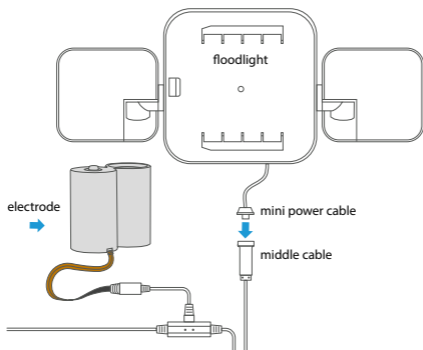


- Remove any AA batteries from the Blink Outdoor camera, then open the plastic cover at the back. Plug in the L-shaped micro-USB into the port in the middle.

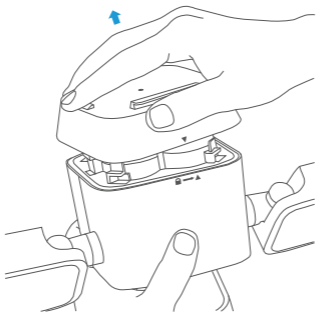
Note: The red LED at the top of the Blink Outdoor camera will flash for a few seconds.



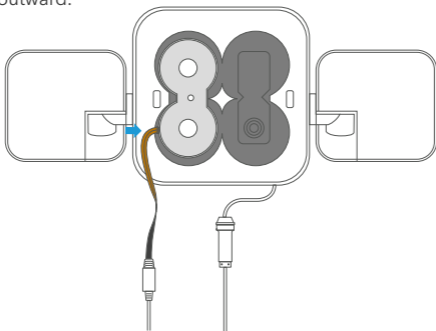
- Connect the middle cable to the mini power cable coming out of the floodlight.



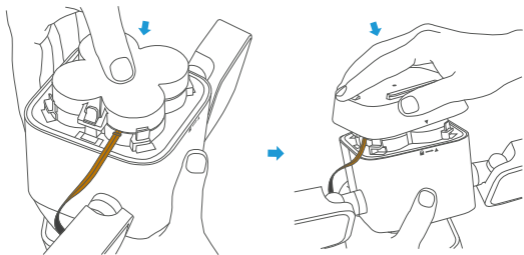
6. Open the floodlight back cover and the battery compartment door, and remove all four D cell batteries.



7. Connect the electrode with the FPC cable facing outward.



- Close the battery compartment and floodlight back cover.



- The floodlight will flash one time, indicating that the solar panel has been installed correctly. You can also check the status in the Blink app.

Note: The app will show the message "floodlight connected" within 30s after connection if your notification function is enabled. You can then use your Blink app to control the floodlight.

Get More Support

Material:	ABS plastic / metal
Dimensions:	7.8 x 5.5 x 1.25 in
Compatibility:	Blink Floodlight / Blink Outdoor Camera
Cable length:	13 ft
Power:	2 W

Get More Support

Scan the QR code below or email us at contact@wasserstein-home.com.



Blink Floodlight Mount Accessory and Outdoor Camera are not included. Blink is the trademark of Immedia Semiconductor, LLC. Wasserstein is a trademark of Dropcases Ltd. Wasserstein is not affiliated with Immedia Semiconductor, LLC

W
WASSERSTEIN
www.wasserstein-home.com
Made in China