

Horizontal Wall Mount for Blink Video Doorbell

USER MANUAL



WASSERSTEIN

Thoughtful Products for your Smart Home

In the Box



1 x horizontal
wall mount



2 x mount screws



2 x short screws



2 x tiny screws



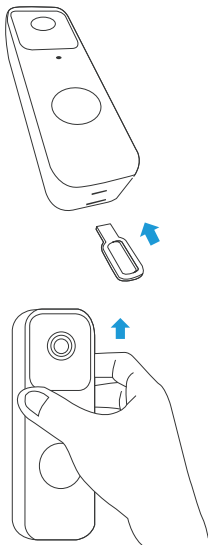
2 x wall anchors

Safety Information

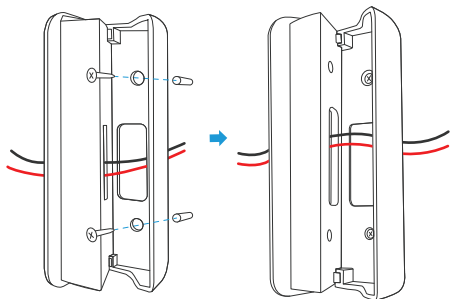
- Read these instructions carefully before use. Failure to follow the safety instructions may cause injury or damage to your property.
- Small parts contained in the box can be a choking hazard. Keep small parts away from children.
- Only use this mount with the Blink Video Doorbell.

How to Install

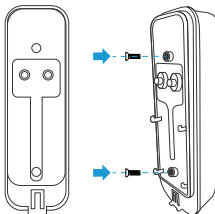
Note: Before you install the wall mount, take down your Blink Video Doorbell if it is already installed. Detach the doorbell backplate using the opening key that comes with your doorbell.



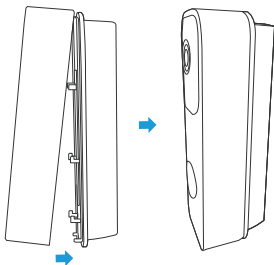
1. Attach the angle mount and to the wall using the screws and anchors provided. The drill bit size is 1/8 in. If your doorbell is hardwired, make sure that the wires go through the cutout and are connected to the backplate before mounting.



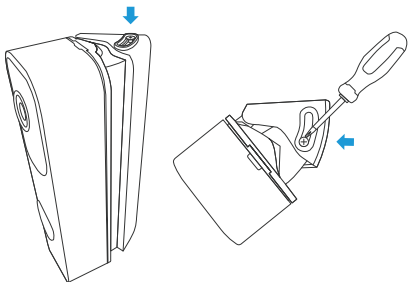
2. Attach the backplate to the wall mount using the short screws provided (make sure the tab is on the bottom and the hooks are facing toward you).



3. Hook the doorbell to the backplate. Press the top in first, then firmly press the bottom in until it clicks.



4. Adjust the angle mount to your preferred angle and secure it on the top and bottom using the tiny screws provided.

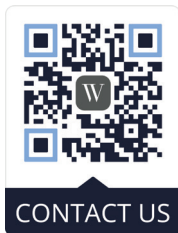


Specifications

Material: ABS plastic
Dimensions: 1.5 x 4.8 x 0.9 in

Get More Support

Scan the QR code below or email us at contact@wasserstein-home.com.



Blink Video Doorbell is not included.
Blink is the trademark of Immedia Semiconductor, LLC
Wasserstein is a trademark of Dropcases Ltd.
Wasserstein is not affiliated with
Immedia Semiconductor, LLC

W
WASSERSTEIN
www.wasserstein-home.com
Made in China