

# Solar Panel for Wyze Battery Cam Pro

USER MANUAL

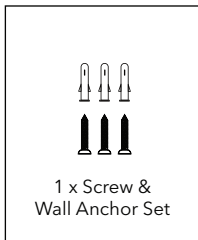
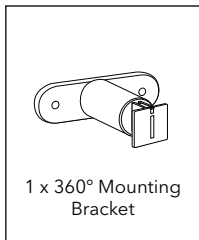
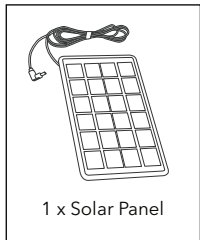


W

WASSERSTEIN®

Smart Home. Smart Living.

## In the Box



## Important Note

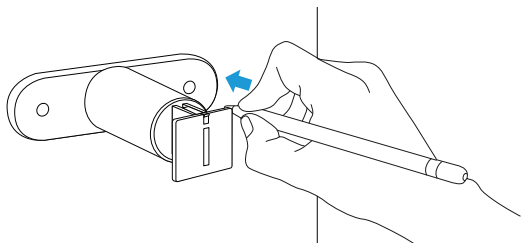
- Install the battery in the Wyze Battery Cam Pro and fully charge it before connecting to the solar panel.
- Mount the solar panel in direct sunlight.

## Warning

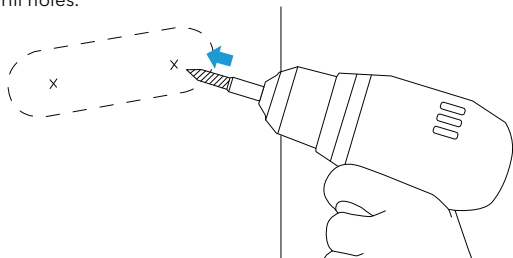
1. Do not open or disassemble the solar panel.
2. Keep the solar panel away from heat sources such as furnaces, heaters, or grills.
3. Ensure the outdoor charging cable is securely attached to your camera.
4. Do not bend, stretch, or cut the charging cable.

## Installing Solar Panel

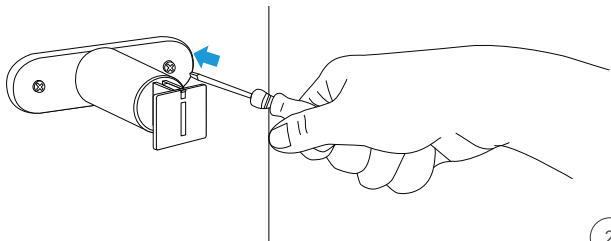
1. Mark holes using the bracket for guidance.



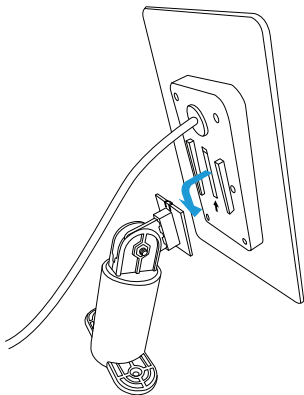
2. Drill holes.



3. Insert wall anchors and screw mount to the wall.

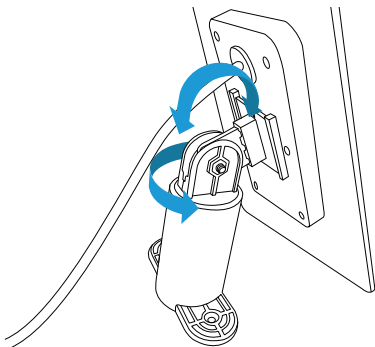


- Slide the solar panel onto the mount attachment.



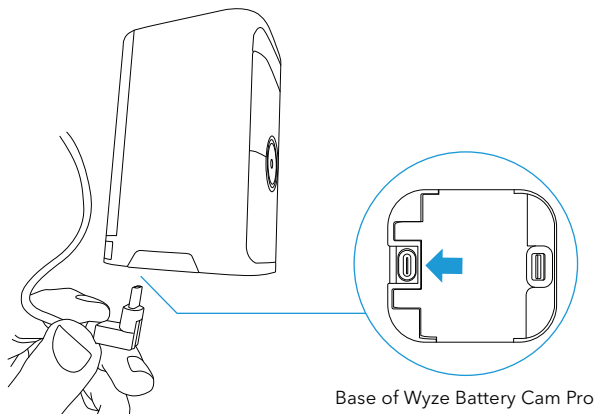
## Adjusting Solar Panel

The 360-degree rotatable mounting bracket allows you to adjust the solar panel in the best position to absorb sunlight.

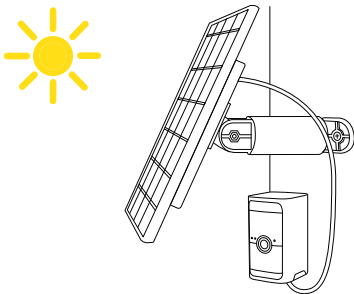


## Connecting Your Camera

1. Plug the cable firmly at the base charging port of the Wyze Battery Cam Pro.



2. Place the solar panel under direct sunlight to continuously charge your camera.

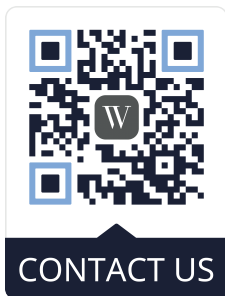


## Specifications

Dimensions:	7.5 x 4.37 x 0.79 in
Power:	2 W
Voltage:	5 V DC
Outdoor cable length:	13 ft
Materials:	ABS

## Get More Support

Scan the QR code below or email us at  
[contact@wasserstein-home.com](mailto:contact@wasserstein-home.com).



Wyze Battery Cam Pro is not included.  
Wyze Battery Cam Pro is a trademark of Wyze Labs, Inc.  
Wasserstein is not affiliated with Wyze Labs, Inc.  
Wasserstein is a trademark of Dropcases Ltd.

Made in China

**W**  
**WASSERSTEIN**<sup>®</sup>  
Smart Home. Smart Living.