

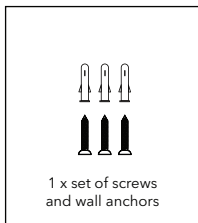
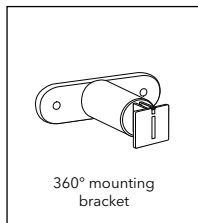
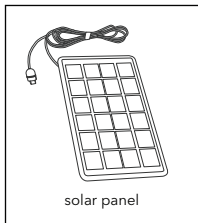
Solar Panel for SimpliSafe Wireless Outdoor Security Camera

USER MANUAL



W
WASSERSTEIN

In the Box



Important Note

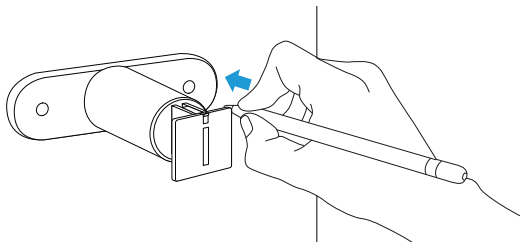
- Fully charge the SimpliSafe Outdoor Security Camera before connecting it to the solar panel.
- Mount the solar panel in a place that gets direct sunshine.

Warning

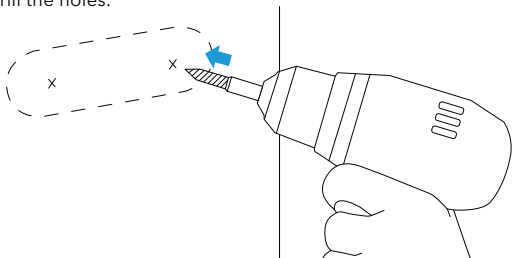
1. Do not open or dismantle the solar panel for any reason.
2. Keep the solar panel away from any heat source like a furnace, heater, or grill.
3. Make sure that the outdoor charging cable is properly attached to your camera.
4. Do not bend, stretch, or cut the charging cable.

Installing Solar Panel

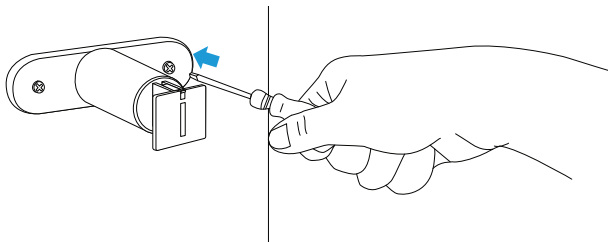
1. Mark the holes using the bracket for guidance.



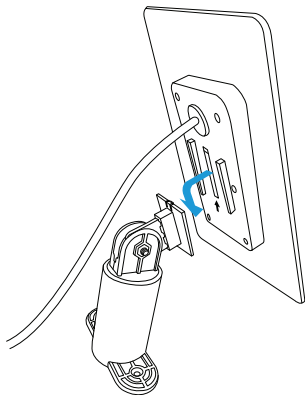
2. Drill the holes.



3. Insert the anchors and screw the mount to the wall.

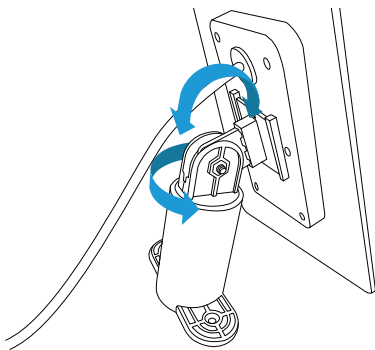


4. Slide the solar panel onto the mounting piece.



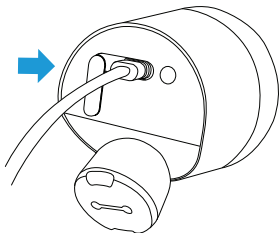
Adjusting Solar Panel

The 360-degree rotatable mounting bracket allows you to adjust the solar panel in the best position to absorb sunlight.

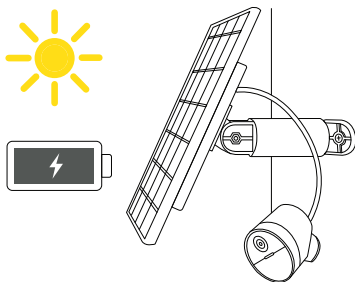


Connecting to Camera

1. Open the rubber cap at the back of your camera, and plug the cable firmly into the port.



2. Place the solar panel under direct sunlight to continuously charge your camera.

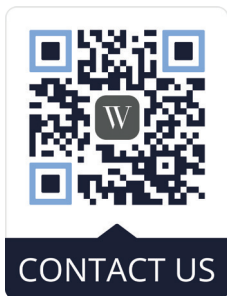


Specifications

Dimension:	7.5 x 4.37 x 0.79 in
Power:	2 W
Voltage:	5 V DC
Outdoor Cable length:	13 ft
Materials:	ABS

Get More Support

Scan the QR code below or email us at contact@wasserstein-home.com.



SimpliSafe Wireless Outdoor Security Camera is not included.
SimpliSafe Wireless Outdoor Security Camera is a
trademark of SimpliSafe, Inc.
Wasserstein is not affiliated with SimpliSafe, Inc.
Wasserstein is a trademark of Dropcases Ltd.

W
WASSERSTEIN

www.wasserstein-home.com

Made in China