

Solar Panel for Blink Video Doorbell

USER MANUAL

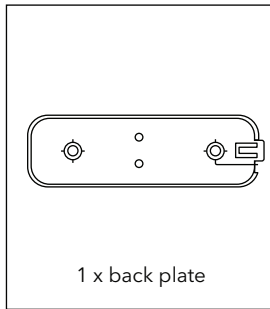
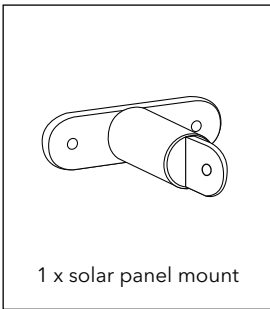
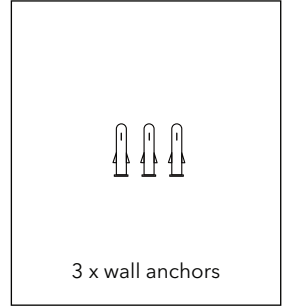
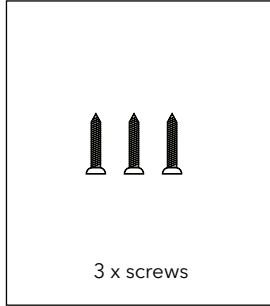
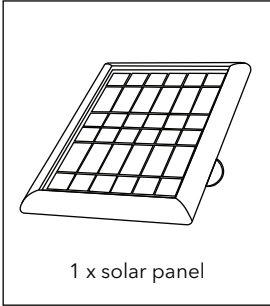


W

WASSERSTEIN

Thoughtful Products for your Smart Home

In the Box



Safety Information

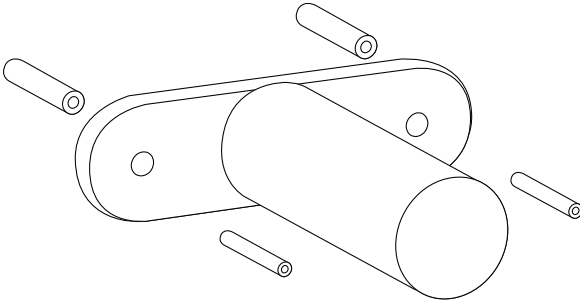
- Disassembling the solar panel is not recommended as it may cause damage to internal components. The solar panel may not function properly after disassembly.
- Do NOT leave bare wires exposed.

Pre-Installation

1. Make sure your solar panel has been charged in direct sunlight for at least 10 hours.
2. Remove any previously installed doorbell, mount, or backplate.

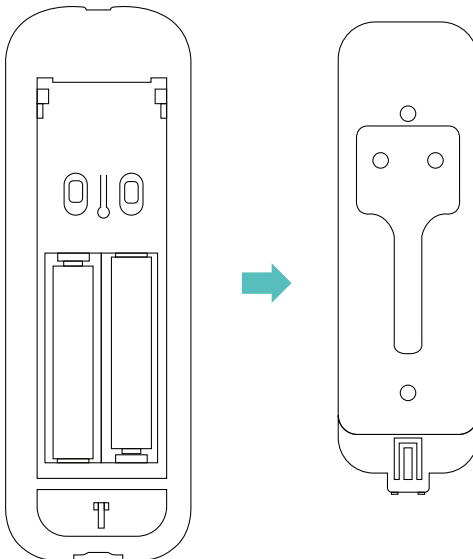
Mounting the Solar Panel

Mount your device directly onto wood using the screws provided. If you are mounting onto brick, concrete, or stucco, mark the holes using the bracket for guidance. Then, drill the holes, insert the anchors, and screw the mount to the wall.

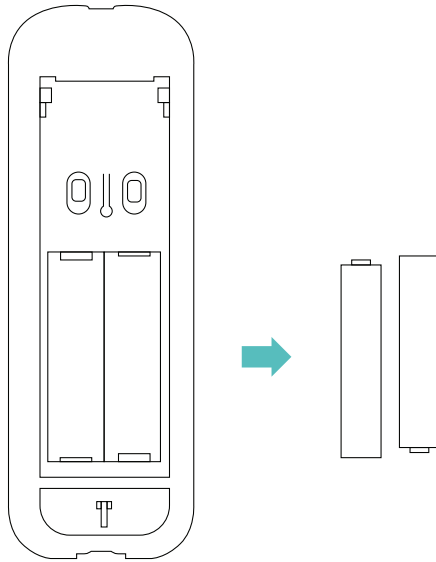


Installation

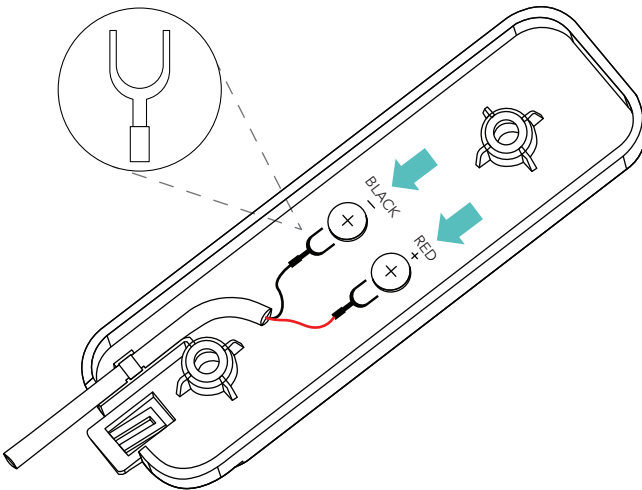
1. Use the key that comes with your Blink Video Doorbell to remove the backplate.



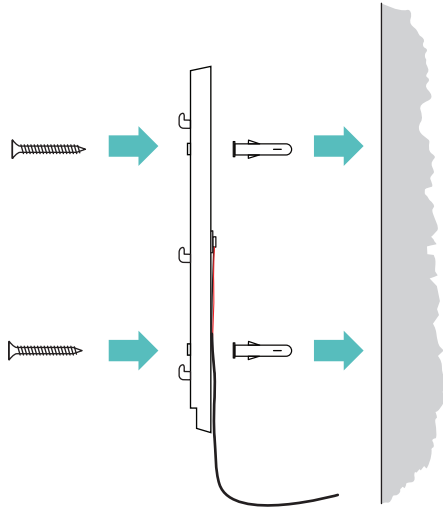
2. Remove any AA batteries.



3. Attach the wires to the new backplate. Connect the black wire to the left screw and the red wire to the right screw. Guide the wires through the opening at the bottom.

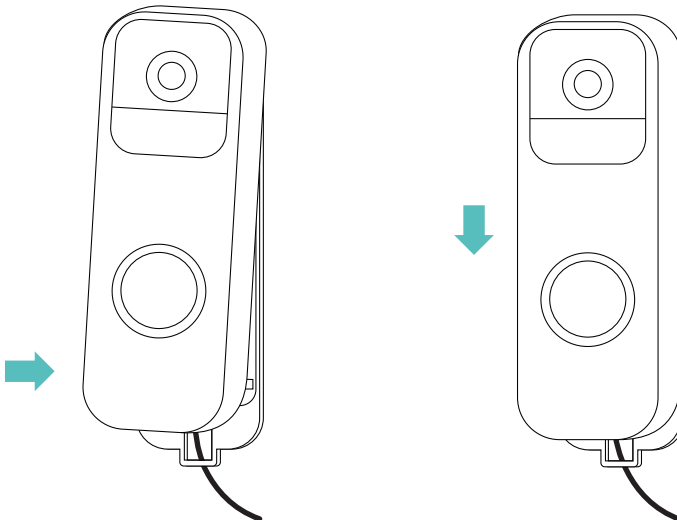


4. Mount the new backplate to the wall using the two anchors and screws provided.



5. Align the top and bottom of the front of the doorbell with the top of the backplate at an angle so the hooks align. Press the doorbell flush against the backplate firmly and pull straight down until you hear and feel a slight click to confirm it is secure. After the doorbell is locked securely, you should see a red LED light flashing which indicates it is seeking connection.

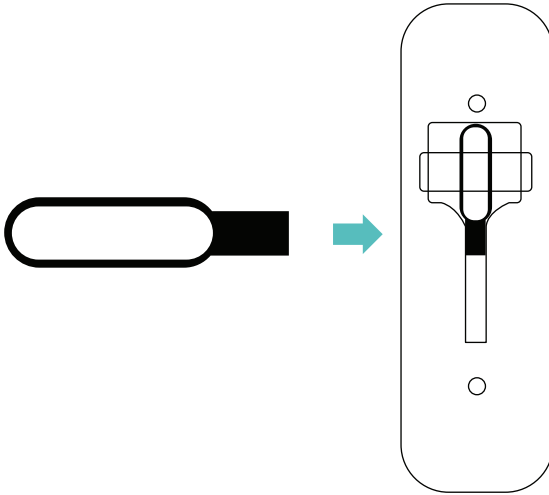
If there is no red LED light flashing after you locked the doorbell, please detach the doorbell and re-install again. Or, make sure you have charged the solar panel for 10 hours before installation.



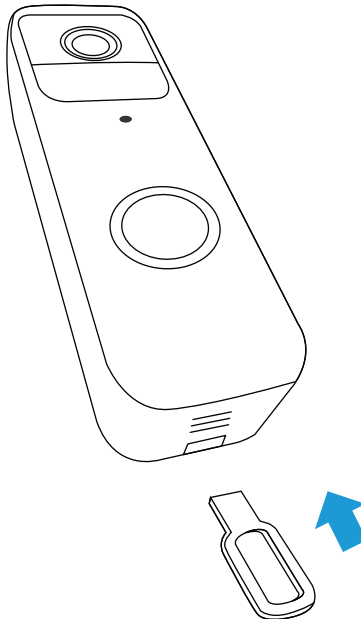
Detaching the Doorbell

In case you need to remove the doorbell from the backplate.

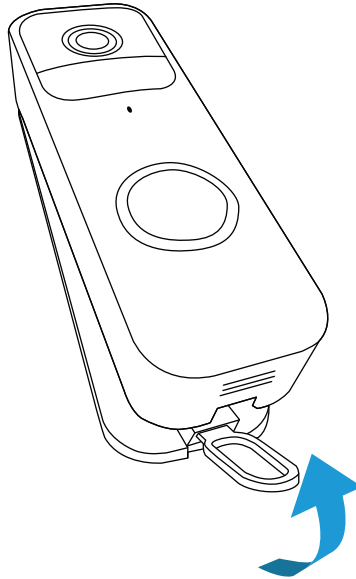
1. Use the key the comes with Blink Video doorbell.



4. Put the key into the opening at the base of the Blink Video Doorbell.



3. Lift, or pull the key "toward" you while you move the doorbell up to unseat the hooks and separate from the backplate.



Important Tips

The solar panel's energy output depends on sunlight exposure, weather conditions, etc. To maximize the energy output, remember to do the following:

- Before installing your doorbell, charge the solar panel for at least 10 hours under direct sunlight.
- Install your solar panel in an area that receives maximum sunlight.
- Clean the surface of the solar panel regularly to remove dust or dirt that could affect its energy conversion.

Troubleshooting

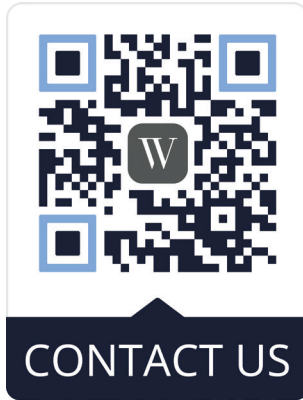
1. Unplug and re-insert both ends of the solar panel charging cable.
2. Make sure that your solar panel is pointed toward the sun and is not obstructed by trees, buildings, or other obstacles.

Specifications

Material:	ABS + PC
Power:	2 W
Output Voltage:	3 V
Solar panel size:	7.87 x 5.6 x 0.7 in (200 x 142 x 13 mm)
Cable length:	13.1 ft (4 m)

Get More Support

Scan the QR code below or email us at contact@wasserstein-home.com.



Blink Video Doorbell is not included.
Blink Video Doorbell is a trademark of Immedia Semiconductor Inc.
Wasserstein is not affiliated with Immedia Semiconductor Inc.
Wasserstein is a trademark of Dropcases Ltd.

W
WASSERSTEIN

www.wasserstein-home.com

Made in China