

# Solar Charger Compatible with Blink Video Doorbell

User Manual



W  
WASSERSTEIN

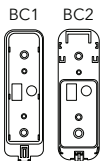
## In the Box



1 x solar charger



1 x set of screws and  
wall anchors



2 x backplates (BC1 & BC2)



1 x set of small screws

## Important Tips

This solar charger continuously powers the Blink Video Doorbell. It contains a 2000 mAh battery.

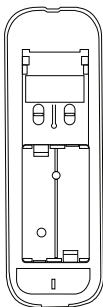
To maximize the energy output of the solar charger, remember to do the following:

- Before installing your doorbell, charge the solar charger for at least 8 hours under direct sunlight.

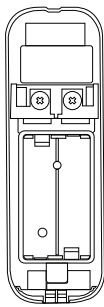
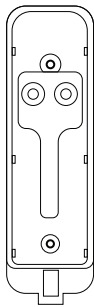
- Install your solar charger in an area that receives maximum sunlight.
- Clean the surface of the solar charger regularly to remove any dust or dirt that could affect its energy conversion.

## Blink Video Doorbells

There are two versions of Blink Video Doorbell:



Two mounting holes



Three mounting holes

## Installation with Blink Video Doorbell

### **Important:**

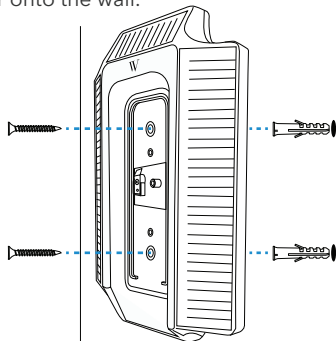
Make sure your solar charger has been charged in direct sunlight for at least 8 hours and is installed in an area that receives maximum sunlight.

Remove any existing doorbell, mount, solar charger, or backplate.

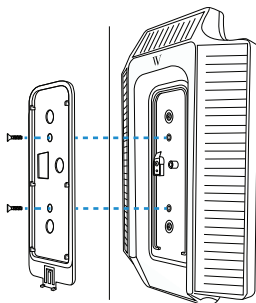
## Installing the Blink Video Doorbell with BC1 backplate.

This is used to mount the Blink Video Doorbell with two mounting holes.

1. Use the two screws and two wall anchors provided to install the solar charger onto the wall.

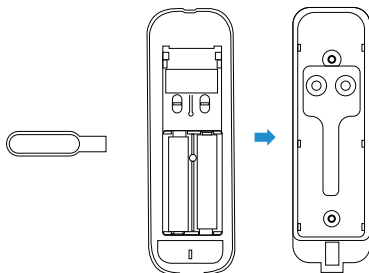


2. Install the in-box backplate of the BC1 solar charger on top of the middle cutout with the two small screws provided.

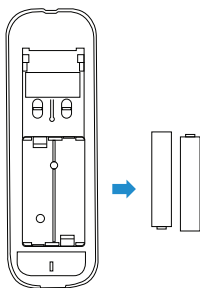


**Note:** Please be aware the correct orientation of the BC1 backplate is as pictured above.

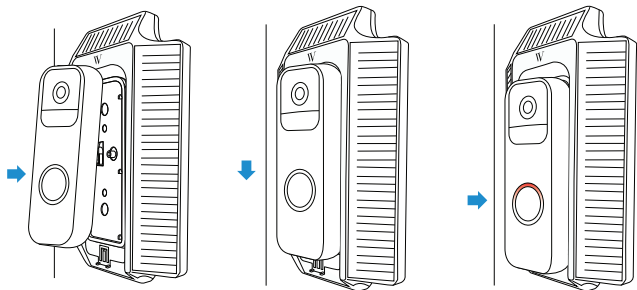
3. Use the key that comes with your Blink Video Doorbell (two mounting holes) to remove the backplate.



4. Remove any existing batteries from the Blink Video Doorbell.



5. Place the top of the Blink Video Doorbell (two mounting holes) on top of the solar charger cutout, so that the hooks line up. Press the doorbell firmly against the solar charger then pull down until it clicks into place.

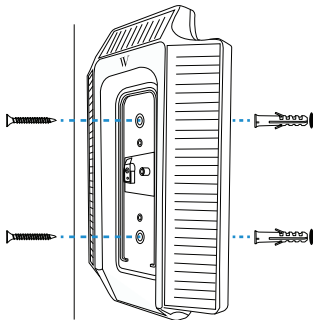


**Note:** A red LED will begin flashing for a few seconds to indicate that it is seeking a connection. If there is no LED flashing, detach and reinstall (solar charger must be charged for at least 8 hours before use).

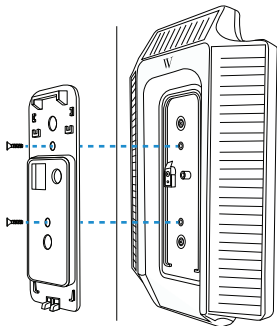
### Installing the Blink Video Doorbell with BC2 backplate.

This is used to mount the Blink Video Doorbell with three mounting holes.

1. Use the two screws and two wall anchors provided to install the solar charger onto the wall.

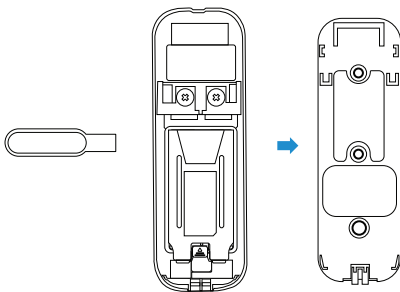


2. Install the in-box backplate of the BC2 solar charger on top of the middle cutout with the two small screws provided.

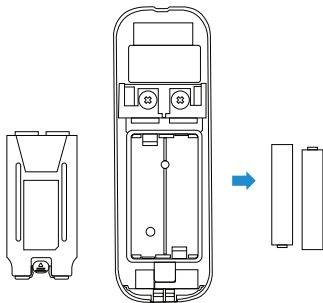


**Note:** Please be aware the correct orientation of the BC2 backplate is as pictured above.

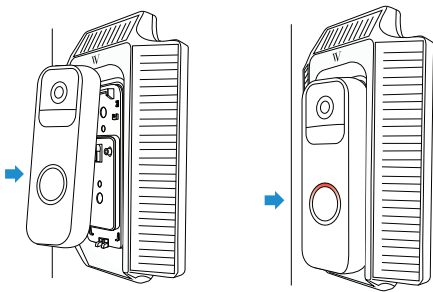
3. Use the key that comes with your Blink Video Doorbell (three mounting holes) to remove the backplate.



4. Remove the battery door and any existing batteries from Blink Video Doorbell (three mounting holes).



5. Place the top of the Blink Video Doorbell (three mounting holes) on top of the solar charger cutout, so that the upper hook lines up. Press the doorbell firmly against the solar charger.



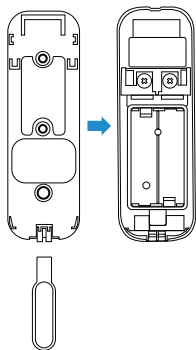
**Note:** A red LED will begin flashing for a few seconds to indicate it is seeking a connection. If there is no LED flashing, detach and reinstall (solar charger must be charged for at least 8 hours before use).



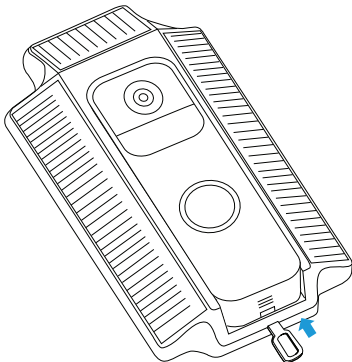
## Detaching Doorbell from Solar Charger

### Blink Video Doorbell (three mounting holes):

1. Use the key that comes with Blink Video Doorbell.

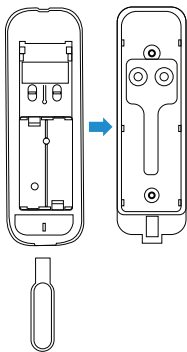


2. Put the key into the opening at the base of the Blink Video Doorbell. The spring will push inward and the doorbell will unlock.

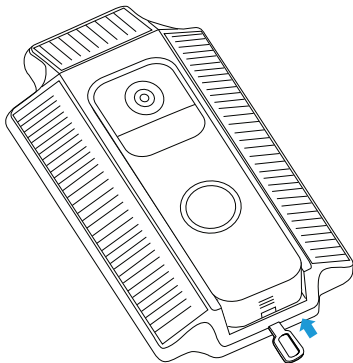


### **Blink Video Doorbell (two mounting holes):**

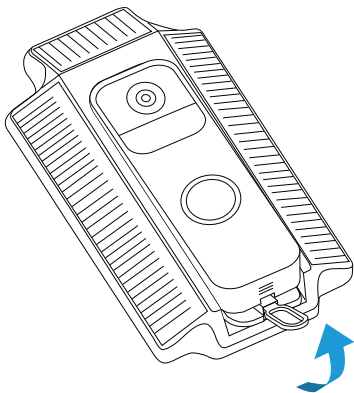
1. Use the key that comes with Blink Video Doorbell.



2. Put the key into the opening at the base of the Blink Video Doorbell.



3. Pull the key towards you and lift up the doorbell to undo the hook and separate from the backplate.

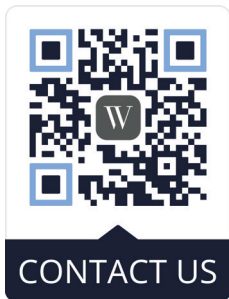


## Specifications

Dimensions:	7.36 x 4.33 x 1.18 in
Battery capacity:	2000 mAh
Output voltage:	3V DC
Power:	0.6 W
Materials:	ABS + PC

## Get More Support

Scan the QR code below or email us at [contact@wasserstein-home.com](mailto:contact@wasserstein-home.com).



Blink Video Doorbell is not included.  
Wasserstein is a trademark of Dropcases Ltd.  
©2022 Amazon.com, Inc. or its affiliates. Amazon,  
Alexa, Blink, and all its related marks are trademarks  
of Amazon.com, Inc. or its affiliates.

**W**  
**WASSERSTEIN**

[www.wasserstein-home.com](http://www.wasserstein-home.com)

Made in China