

4-in-1 Battery Floodlight, Charger, and Mount with Solar Panel

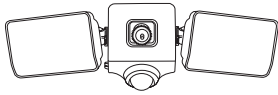
USER MANUAL



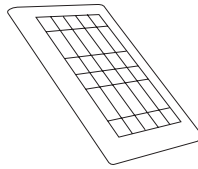
W
WASSERSTEIN®

Compatible with Blink XT/Outdoor, Arlo Pro3/4/Essential, and Wyze Cam Outdoor/V2

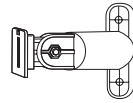
In the Box



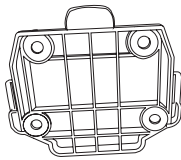
1 x battery floodlight



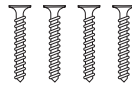
1 x solar panel



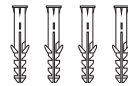
1 x solar panel mount



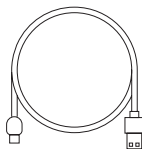
Wall plate



4 x wall plate screws



4 x wall plate anchors



1 x USB cable



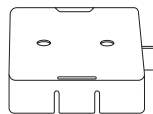
3 x solar panel mount screws



3 x solar panel mount anchors



1 x camera mount adapter for
*Blink Outdoor camera



1 x camera mount adapter for
**Wyze Outdoor camera

* For panels compatible with Blink Outdoor camera.

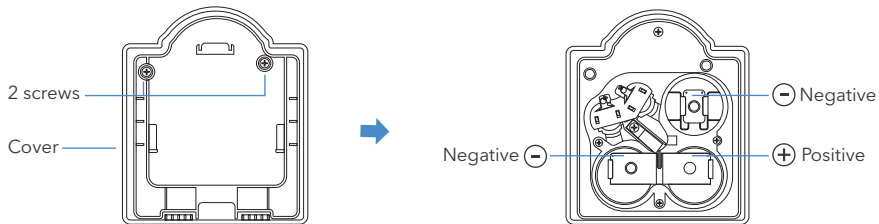
** For panels compatible with Wyze Outdoor camera.

Safety Information

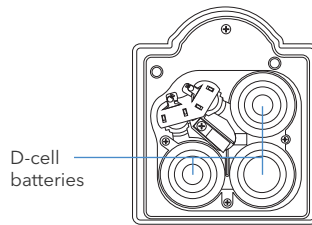
- Disassembling the light head is not recommended, as it could damage internal components and result in improper function afterward.
- **DO NOT** remove the protective LED lens.
- Avoid prolonged direct viewing of illuminated LEDs to prevent discomfort.

Installation of D-Cell Batteries in the Floodlight (batteries not included)

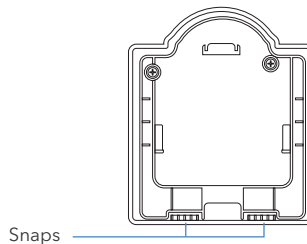
1. Unscrew the two screws in the rear battery compartment of the floodlight.



2. Open the battery cover and insert 3 D-cell batteries (not included), following the indicated polarity.



3. Reattach the battery cover by aligning it with the snaps on the back of the floodlight. Press down and secure the cover by tightening the two screws.



Notes:

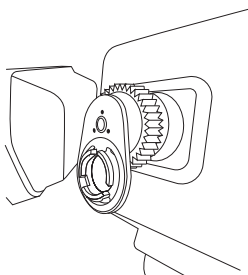
1. D-cell batteries not included.
2. Batteries are required as backup power if solar panel can't provide sufficient energy to floodlight and camera in low light conditions.

Mounting Your Camera

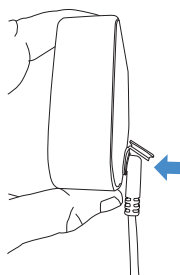
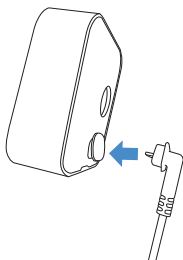
Ensure the camera is fully charged before mounting. Depending on the battery level of the floodlights, the camera may not draw charge from them.

Blink XT/Outdoor

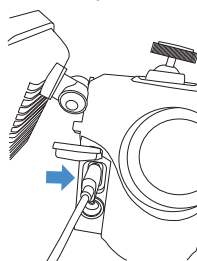
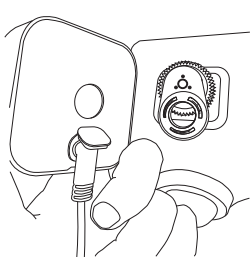
1. Attach the Blink XT/Outdoor camera mount adapter to the floodlight.



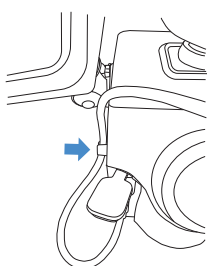
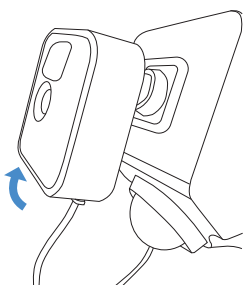
2. Connect the L-shaped micro-USB connector of the USB cable to the Blink XT/Outdoor camera.



3. Insert the camera onto the camera mount adapter.
4. Connect the USB cable to the floodlight's USB port.

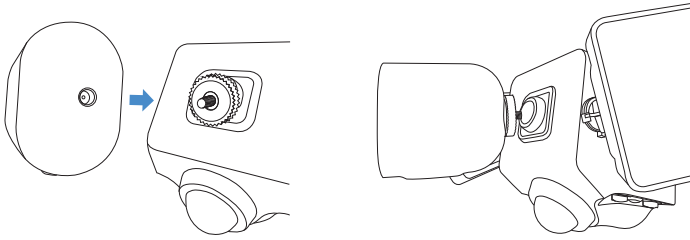


5. The camera is now ready to be powered by a solar panel.
6. Set the camera angle to your preference (solar panel installation comes later).
7. Securely position the cable within the slot on the left side of the floodlight.

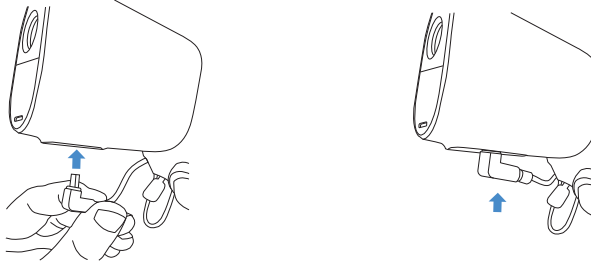


Arlo Essential

1. Attach the Arlo Essential camera to the floodlight using screws.



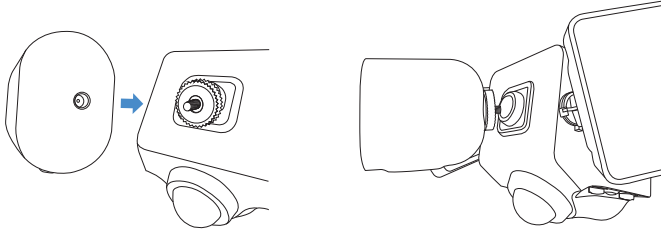
2. Plug the micro USB connector of the USB cable into the Arlo Essential camera.



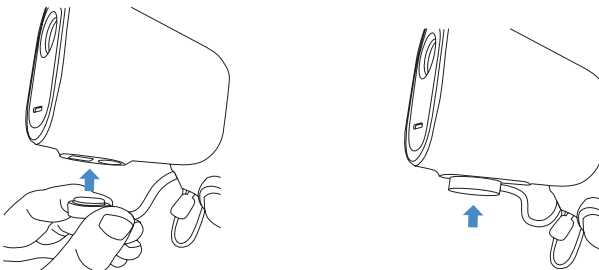
3. Connect the USB cable to the floodlight's USB port.
4. The camera is now ready to be powered by a solar panel.
5. Set the camera to your desired viewing angle; solar panel installation follows.
6. Securely place and fasten the cable into the slot on the left side of the floodlight.

Arlo Pro 3/4

1. Attach the Arlo Pro3/4 camera to the floodlight using screws.



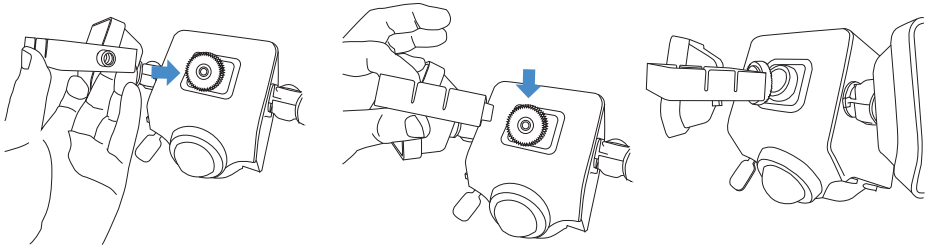
2. Connect the magnetic USB cable connector to the Arlo Pro3/4 camera.



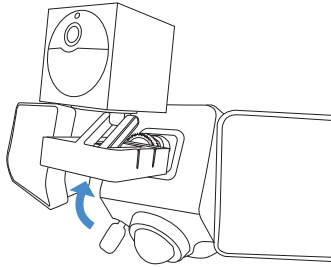
3. Connect the USB cable to the floodlight's USB port.
4. The camera is now ready to be powered by a solar panel.
5. Adjust the camera to your preferred viewing angle; solar panel installation comes next.
6. Securely position and fasten the cable into the slot on the left side of the floodlight.

Wyze Cam Outdoor/V2

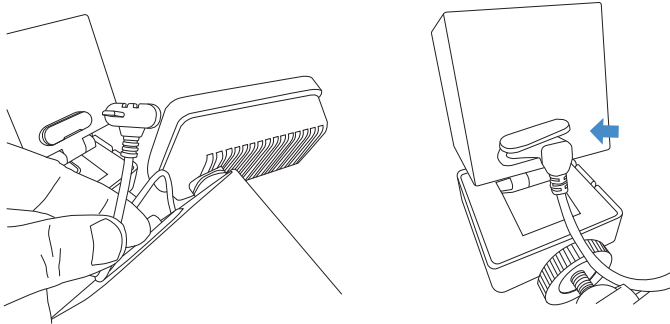
1. Attach the Wyze cam outdoor camera mount adapter to the floodlight using screws.



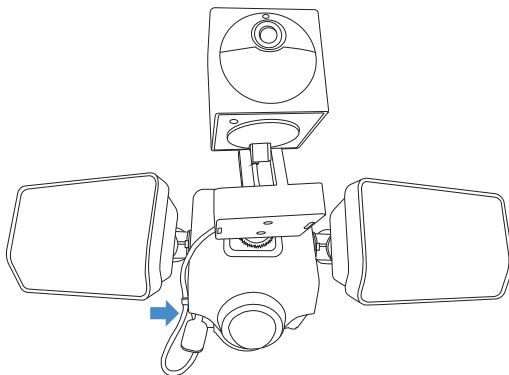
2. Place the camera onto the camera mount adapter and elevate it.



3. Connect the micro USB connector of the USB cable to the Wyze cam outdoor camera.



4. Connect the USB cable to the floodlight's USB port.

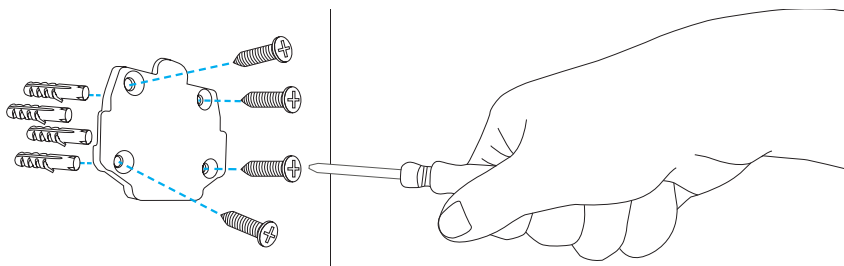


5. The camera is now ready to be powered by a solar panel.
6. Adjust the camera to your desired viewing angle.
7. Securely position and fasten the cable into the slot on the left side of the floodlight.

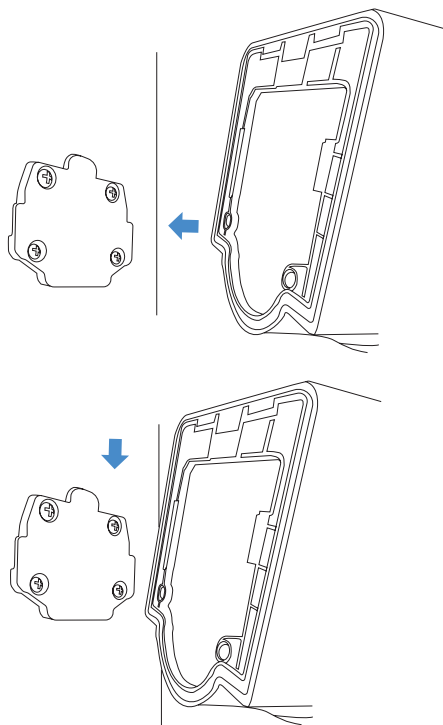
Floodlight Setup

Follow these steps to mount your floodlight onto the wall plate:

1. Attach the wall plate to the wall using the provided 4 anchors and 4 screws.



2. Slide the floodlight onto the mount that has been securely fixed to the wall.



Note: While inserting the USB and solar panel connectors into the floodlight, use your other hand to support the floodlight and prevent it from moving upwards.

Floodlight Setup

Time Setting

This represents the duration the floodlight remains active upon motion detection. Choose from 30, 60, or 120 seconds for the duration. Avoid leaving it in "Test" mode, as it triggers brief activation upon motion, irrespective of ambient light conditions.

Mode

To adjust the floodlight brightness, please press to select from these options:

Press button	Brightness
Press 1 time	900 lumens (high)
Press 2 times	600 lumens (medium)
Press 3 times	300 lumens (low)
Press 4 times	Flood light off

Continuously press the button to cycle through various brightness settings. This grants you the flexibility to tailor the floodlight's brightness to your liking or specific demands.

Motion Detection Sensitivity

Tailor the motion detection range for your floodlight:

- L: Shortest distance
- M: Medium distance
- H: Farthest distance

This setting enablese you to customize the extent at which the floodlight detects motion.

Optimal Configuration

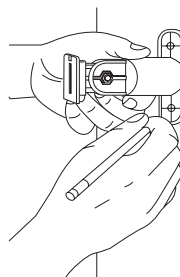
For enhanced floodlight battery life, consider these suggested settings:

Time: 30 seconds
Mode: 300LM or 600LM
Sensitivity: H

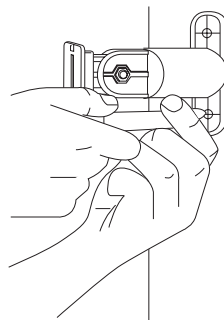
Extending turn-on time (e.g., 60s and 120s) and increasing brightness (e.g., 900 LM) will lessen battery longevity. The floodlight activates solely in low-light or dark conditions upon motion detection.

Installing the Solar Panel

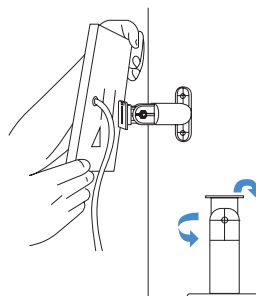
1. Choose a location with maximum sunlight exposure. Employ the wall mount as a guide, and mark screw hole locations with a pencil.



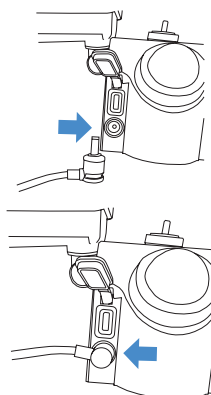
2. Drill holes at the marked spots, and insert the provided plastic anchors. Secure the mounting arm onto the wall using the provided screws.



3. Slide the solar panel onto the wall mount. Adjust and rotate the panel's angle to achieve the best sunlight exposure position.



4. Connect the solar panel's connector to the "SOLAR" port on the floodlight. This enables the solar panel to convert sunlight into power for the floodlight and camera.



Note: After attaching the solar panel to the floodlight and camera, expose it to strong sunlight for a total of 8 hours. This charges the built-in battery before regular usage can commence.

Important Tips

1. For new D cell batteries or after setup, expose the floodlight and solar panel to 8 hours of sunlight before use to activate the system.
2. Thoroughly assess potential entry points and place the floodlight near vulnerable areas like back doors to deter intruders.
3. Optimal placement is on walls facing potential intruder paths, allowing the motion sensor to detect movement parallel to the floodlight.
4. While weatherproof, shelter the floodlight from harsh conditions to optimize battery life and ensure reliable operation over time.
5. Mount the solar panel in an area with maximum sunlight exposure.
6. Utilize 3 D-cell batteries to maintain floodlight and camera power, particularly in no-sunshine conditions.

FAQ

The floodlight keeps flashing. What should I do?

Ensure the built-in Lithium battery is charged using the solar panel. Check correct placement of D-cell batteries.

Will the floodlight turn on during the day?

No, the floodlight activates only at night or in low light conditions.

After installing the floodlight, how can I confirm its operation?

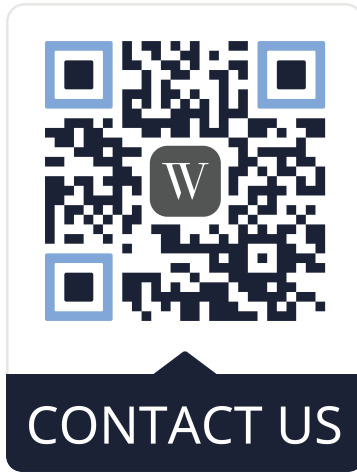
Select "**TEST**" mode after installation. The battery floodlight will illuminate for 5 seconds and then go off. Adjust the desired illumination duration. Avoid leaving it in "**TEST**" mode to prevent incorrect functionality in daylight.

Specifications

Max LED light intensity:	900 Lumens
Color temperature:	3000-3500 k
Power:	2 x 2000mAH Lithium batteries (built-in) 3 x D-cell batteries (not included)
Solar Panel Cable length:	13 ft (4 m)
Solar Panel Power:	2 W
Materials:	PC
Sensor angle range:	160°
Sensor distance thresholds:	13 to 39 ft (4 to 12 m)

Get More Support

For help or if you have questions, scan the QR code below, or email us at:
contact@wasserstein-home.com



Blink, Arlo, and Wyze cameras are not included.
Blink Outdoor is a trademark of Immedia Semiconductor Inc.
Blink XT2 is a trademark of Immedia Semiconductor Inc.
Arlo Essential is a trademark of Arlo Technologies, Inc.
Arlo Pro is a trademark of Arlo Technologies, Inc.
Wyze Cam is a trademark of Wyze Labs, Inc.
Wasserstein is not affiliated with Immedia Semiconductor Inc.,
Arlo Technologies, Inc., or Wyze Labs, Inc.
Wasserstein is a trademark of Dropcases Ltd.

W
WASSERSTEIN®

www.wasserstein-home.com