

60mm

# Sous Vide Smart Precision Cooker

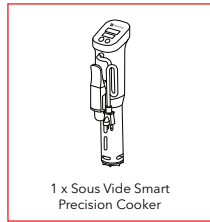
## USER MANUAL



**DW** DARTWOOD

100mm

### In the Box



1 x Sous Vide Smart Precision Cooker

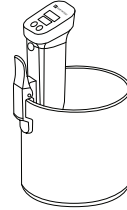
### Safety Information

- The cooking container, stainless steel portion of the circulator, and food pouches all get hot when used. Use oven mitts or tongs when handling.
- Make sure your countertop can withstand the heat generated by the circulator.
- Avoid using deionized or distilled water.
- Avoid using an extension cord. Do not operate with a damaged cord or plug. Use properly grounded electrical outlets only.
- To avoid damage, do not cover the motor with soap or submerge it under water.

Page 2

### How to Use

1. Find a suitable Sous Vide container or basin and fill it with water.  
**Note:** Make sure the water level does not exceed the "MAX" line, the device will stop automatically if the water level is below the "MIN" line.



2. Place the Sous Vide inside your container and clip the device onto the edge.
3. Connecting your device.

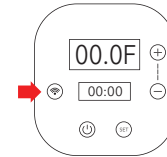
1. Install our Wasserstein App.



Page 3

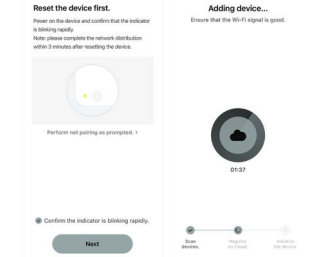


II. Press "Add Device" and find "Sous Vide".

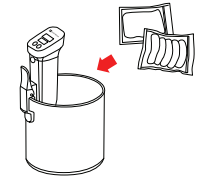


III. Press the pairing button on the Sous Vide device for at least 4 seconds, the button will start blinking.

Page 4

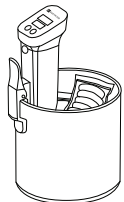


IV. Connect to a 2.4 GHz Wi-Fi network.



4. Prepare your meal contents in the pouches and put them inside the Sous Vide container.  
**Note:** Ensure the food is completely vacuum-sealed inside the pouch to prevent water from leaking in.

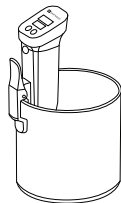
Page 5



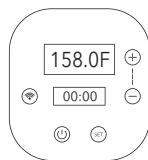
5. To begin cooking, use the available preset or adjust the settings yourself using the "Custom Food" feature on the app.  
**Note:** Timer will only begin when the temperature reaches the selected target.

Page 6

### Cleaning

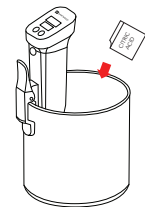


1. Put the device in a container and fill it with water to the "MAX" level.



2. Set the appliance temperature to 158°F (70°C).

Page 7



3. To get rid of limescale, add 5 grams of citric acid powder (food grade) per liter of water used.
4. Allow the water to circulate for 20 minutes after 158°F (70°C) is reached.
5. Turn off and cool down the device, rinse the bottom in cold water and thoroughly dry before storage.

Page 8

### Specifications

Model no: SV-8008  
 Power: 120V / 1000W  
 Frequency: 60 Hz  
 Waterproof Certification: IPX7  
 Product Size: H14.5 x W3.1 x L4.6 in

### Get More Support

Scan the QR code to contact us or send us an email at [contact@wasserstein-home.com](mailto:contact@wasserstein-home.com)



SCAN ME

For more information, please visit: [www.wasserstein-home.com](http://www.wasserstein-home.com)  
Made in China

**DW** DARTWOOD