



DARTWOOD

A Wasserstein Brand

20 LED Solar Spotlight

User Manual



The Dartwood Solar Spotlight converts sunlight into energy during the day, powering the spotlight to automatically switch on during the night when motion is detected. Conserve energy and help save the environment with this energy-efficient solar powered light.

Table of Contents

Package Includes	2
Safety Information	2
Features	2
Installation	3
Operation	4
Important Tips	4
Warning	4
FAQ	5
Specifications	5

Package Contents

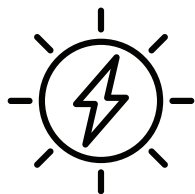
- 2 x Solar Spotlights
- 2 x Anchors
- 2 x Screws
- 1 x Manual



Safety Information

- Keep the Dartwood Solar Spotlight away from high temperature locations to avoid leakage or combustion of the internal battery. Do not mount near chimneys, exhausts, air conditioners, open-flame grills, boilers, or furnaces.
- Disassembling the Dartwood Solar Spotlight is not recommended as it may cause damage to internal components. The Dartwood Solar Spotlight may not function properly after disassembly.
- Make sure the Dartwood Solar Spotlight is properly installed onto the wall mount with screws to prevent damage and tampering by animals, rain and wind.

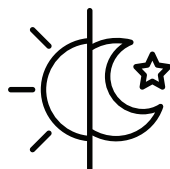
Features



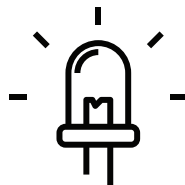
Solar-Powered



Waterproof,
Heatproof,
and Durable



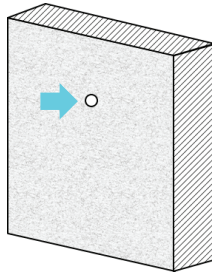
Day and Night
Sensor



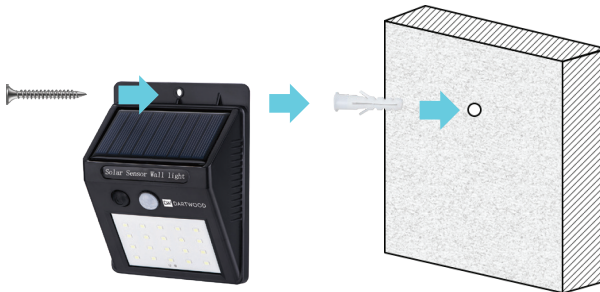
150 Lumens

Installation

1. Find a suitable location for your solar spotlight. It can be mounted on a wall, stair tread or wood post.
2. Use the anchors and screws to mount the device onto the desired location.
3. Start by drilling holes for the anchors and the screws.



4. Fix the screws to the anchors through the hole on the top of the spotlight.



5. Tighten the screws to make sure the solar spotlight is installed firmly.



Operation



Press the black button to turn the device on/off.

When the device is switched on, the spotlight will turn on when it senses motion in the dark.

Note: The spotlight will not turn on even when motion is detected if it isn't dark.

Important Tips

- Assess where intruders are most likely to enter and the path they would take. Most intruders enter the home through a back door, patio door, or garage door. Hence it is advisable to place the Dartwood Solar Spotlight near entrances to your home.
- Mount the Dartwood Solar Spotlight on walls that an intruder would walk alongside, such as a narrow pathway. The motion sensor works best when movements are detected across it, not towards it.
- You can also mount the Dartwood Solar Spotlight beside your security camera to illuminate the camera's vision at night.
- Although the Dartwood Solar Spotlight is weatherproof, it is advisable to mount it to a wall shaded from the rain to maximize its product life.

Warning

1. Read the entire manual before using the product.
2. Keep the device far from heat and fire to avoid any explosions.
3. The packaging materials should be kept away from children.
4. Do NOT clean the device with strong cleaning agents, solvents, or similar substances.

FAQ

Q: Spotlight will not switch on

- a. Ensure that the device is powered on.
- b. Ensure that the internal batteries have been fully charged in direct sunlight.
- c. Ensure that the solar panels are facing south so they receive direct sunlight for most of the day, enabling the batteries to fully charge.

Q: Spotlight flashes on and off

- a. Battery levels may be low. Turn the spotlight off and charge the batteries by sunlight, ensuring the solar panels are placed in direct sunlight.

Q: Spotlight is not as clear as usual

- a. Battery levels may be low. Turn the spotlight off and charge the batteries by sunlight, ensuring the solar panels are placed in direct sunlight.

Specification

Solar Panel	: 0.55W
LED	: 20pcs
Lumens	: 150
LED color	: White
Waterproof	: IP65
PIR sensor range	: 9.8-16.4ft (3-5m)



DARTWOOD

A Wasserstein Brand

Dartwood and Wasserstein are trademarks of Dropcases Ltd.

For more information and inquiries,
please reach out to:
contact@wasserstein-home.com

Made in China