

# Gutter Mount

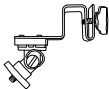
USER MANUAL



W

WASSERSTEIN

## In the Box



1 x gutter mount



1 x adapter for  
Ring Spotlight  
Cam Plus/Pro



1 x adapter nut

## Camera Compatibility

- Ring Spotlight Cam
- Ring Spotlight Cam Plus
- Ring Spotlight Cam Pro

## Safety Information

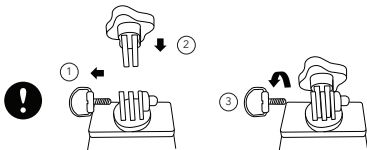
- Read these instructions carefully before use. Failure to follow the safety instructions could cause injury or damage to your property.
- Be aware of height-related hazards during the installation process. Make sure you have the necessary equipment and assistance with you.
- Before proceeding with the installation, it is crucial to thoroughly assess and confirm that your gutter can safely support the combined weight of both the camera and the gutter mount.
- Ensure that your camera is weatherproof before proceeding with the installation.
- Warning: Choking hazard due to small parts. Keep small parts away from children or pets.

# Installation

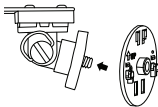
1. Before installation, verify that you have all the materials and tools included in the kit to ensure a smooth and successful installation.



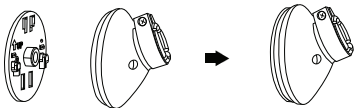
2. Attach the mounting piece by first removing the screw at the base of the gutter mount and sliding the mounting piece in between the slots. Then, replace the screw into the assembly and tighten firmly.



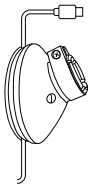
3. To attach the camera adapter to the gutter mount, rotate and tighten the camera adapter onto the threaded gutter-mount nut.



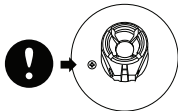
4. To attach the camera mount onto the camera adapter, push the camera mount down until it clicks.



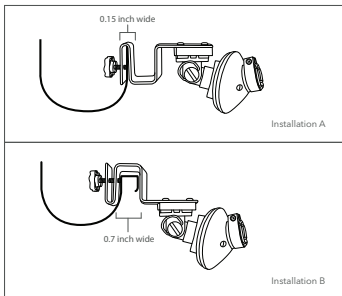
- \* If you have a wired model, make sure the power supply cable is positioned at the bottom of the mount.



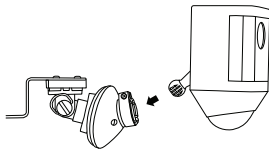
5. Tighten the screw on the original mount to secure the camera mount to the adapter.



6. Hang the mount onto your gutter using the slot that best fits your gutter type. Secure it by placing the 2 knob screws into the back and tightening firmly.



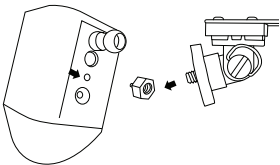
7. Snap the camera onto the mount at your preferred angle and check the view from the mobile app.



8. Confirm that your set up was successful and you have the right camera by reviewing the live view through the mobile app.

### For the Ring Spotlight Cam.

You can secure the adapter nut to the camera and directly secure it to the gutter mount.



## Get More Support

To get customer support, please scan the QR code below or email us at [contact@wasserstein-home.com](mailto:contact@wasserstein-home.com)



Ring Spotlight Cam is not included.  
Ring is a trademark of Ring Inc.  
Wasserstein is a trademark of Dropcases Ltd.  
Wasserstein is not affiliated with Ring Inc.

**W**  
**WASSERSTEIN**  
[www.wasserstein-home.com](http://www.wasserstein-home.com)

Made in China