

Portable Electric Nail Drill

USER MANUAL



DARTWOOD

In the Box



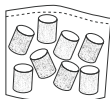
1 x electric
nail drill



1 x USB
cable/switch



1 set of drill bits /
filing bands



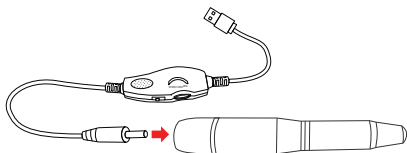
1 x pack of extra
filing bands

Warning

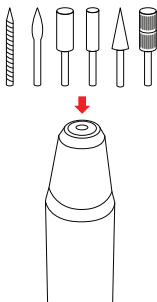
- Keep away from heating sources while in use, such as portable heaters, radiators, stoves, open flames, etc.
- Keep away from dust, dirt, smoke, chemical/corrosive materials, and water.
- Make sure this device is cleaned and stored safely after use.

Setup

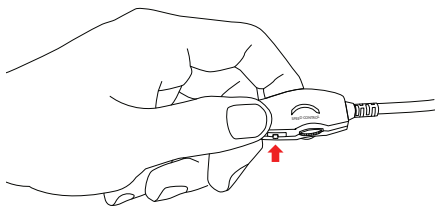
1. Plug one end of the USB cable into the electric nail drill and plug the other end into a USB port.



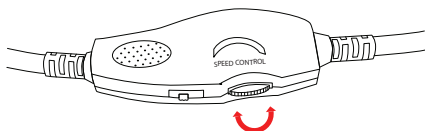
3. Select your preferred drill bit and push it firmly into the nail drill.



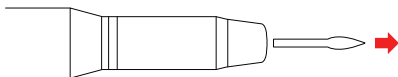
3. Turn the nail drill on/off by flipping the switch on the USB cable (right for forward, left for reverse).



4. Adjust the speed by turning the knob next to the switch.

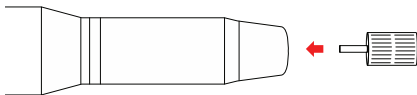


5. To remove, turn off the device and pull out the drill bit.

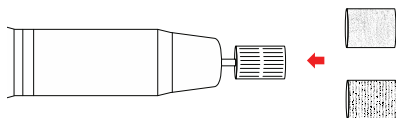


Filing Bands

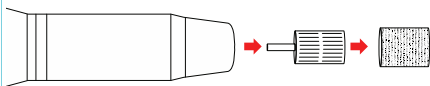
1. Select the filing drill bit and push it firmly into the nail drill.



2. Select your preferred filing band (fine or coarse) and push it firmly over the top of the filing drill bit.



3. To remove, turn off the device and pull off the filing band. Then pull out the drill bit.



Specifications

Input:	DC 5V 2A
Output:	DC 12V 1A
Rated voltage:	DC 5V 0.1A
No-load speed:	16,000 - 20,000 RPM
Load speed:	14,000 - 17,500 RPM
Power supply:	USB cable
Product size:	4.75 x 0.8 in
Product weight:	2.2 oz
Cable length:	5 ft

Get More Support

Scan the QR code below or email us at
contact@wasserstein-home.com



CONTACT US

 **DARTWOOD**

www.wasserstein-home.com

Made in China