

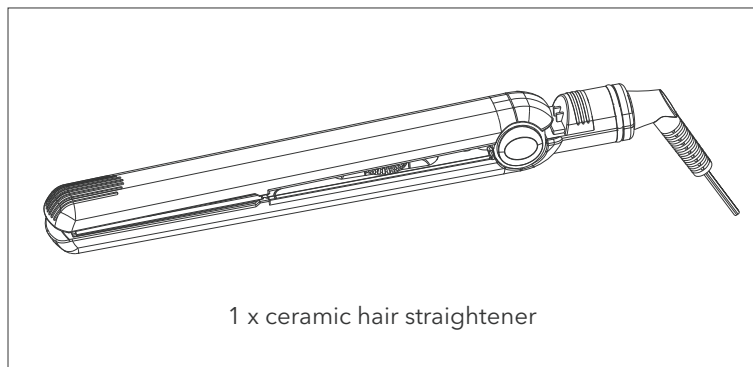
Ceramic Hair Straightener

USER MANUAL



DW DARTWOOD

In the Box



Note: Before using this device, read this manual carefully. Keep this manual for future reference.

Safety Instructions

Read all instructions before using.



CAUTION: Do not use this apparatus near bathtubs, showers, washbasins or other receptacles containing water.



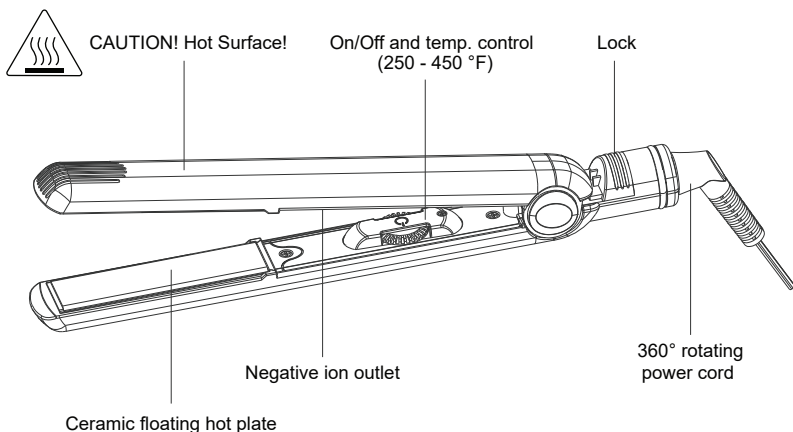
Any appliance is electrically live even when the switch is off.

To reduce the risk of injury or death by electric shock:

1. Use this appliance only for its intended use, as described in this manual.
2. Always unplug the appliance immediately after use.
3. Do not place or store appliance where it can fall or be pulled into a tub or sink.
4. Do not place, or drop into water or other liquids.
5. If an appliance falls into water, unplug it immediately. Do not reach into the water.
6. This appliance should never be left unattended when plugged in.
7. Do not pull, twist, or wrap power cord around appliance.
8. Only use attachments recommended by the manufacturer.
9. Never operate this appliance if it has been damaged.

10. Keep the cord away from heated surfaces.
11. Do not leave the appliance unattended when plugged.
12. Do not use outdoors or operate where aerosol (spray) products are being used.
13. Do not let heated surfaces touch eyes or skin.
14. Do not place the heated unit directly on any surface while it is hot or plugged in.
15. Never block the air openings of the appliance.
16. Do not use an extension cord or a voltage converter with this appliance.
17. Do not touch the hot surface of the appliance.
18. This appliance is not a toy. Keep away from children.
19. Do not attempt to repair the product by yourself.

Introduction to Parts



Temperature Setting Guide

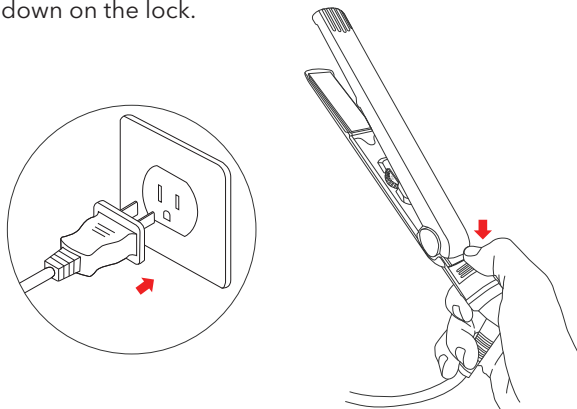
250 °F	fragile / fine hair
250 - 300 °F	fine hair
300 - 360 °F	normal hair
360 - 390 °F	wavy / curly hair
390 - 420 °F	coarse / thick hair

Note: For safety reasons, this appliance will shut off after one hour.

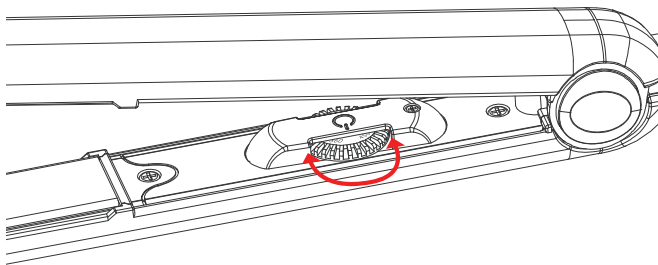
How to Use

Note: This appliance has a polarized plug (one blade is wider than the other) and will only fit in the outlet one way.

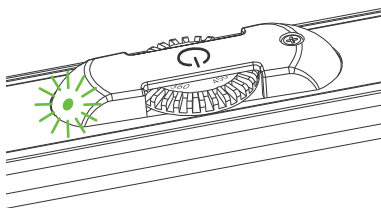
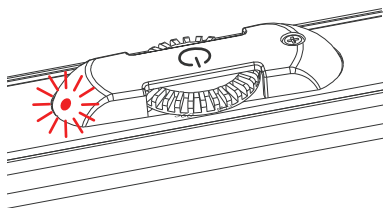
1. Plug the appliance into an electrical outlet. Open the straightener by pulling down on the lock.



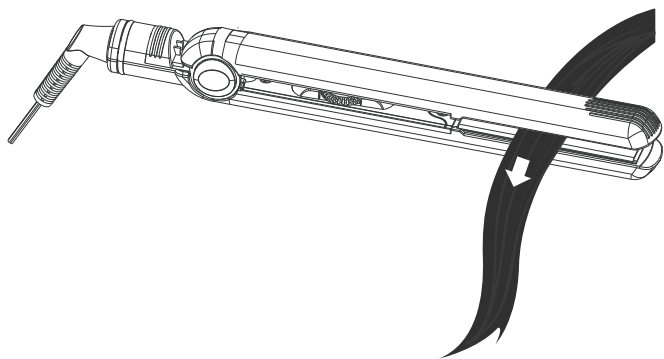
2. Turn the straightener on/off by adjusting the temperature control.



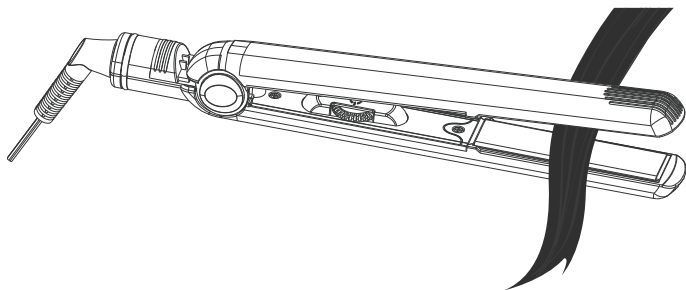
3. When heating, the light on the temperature control will flash red. Once the temperature is reached, the light will turn solid green.



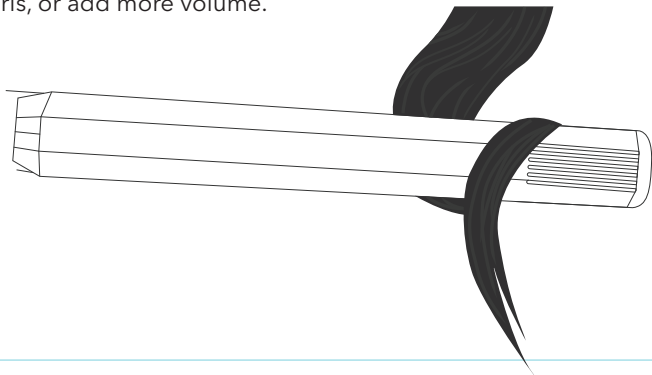
4. Start with a section of hair around 1.5 inches wide. Place the hair between the hot plates and clamp the handles together firmly.



5. Slowly move the unit along the hair to the end and release. Repeat the steps until you get your preferred hairstyle. Results may vary depending on the texture and quality of the hair.



6. To add flips or waves, clamp your hair between the plates and wrap it around the outer housing. Turn your wrist up or down to create flips, add curls, or add more volume.



Warranty

Please visit: <https://wasserstein-home.com/pages/terms-of-service>

Specifications

Model:	HS40P
Rated voltage:	AC 100 - 240 V 50/60 Hz
Rated power:	40 W
Auto cut-off:	1 hr
Operating temp:	250 - 450 °F
Ceramic plate size:	3.5 x 0.9 in
Power cord length:	6.5 ft
Dimensions:	11.8 x 1.2 x 1.1 in
Weight:	11.3 oz

Note: The actual product and specifications are subject to change without notice due to enhancements.

Get More Support

Scan the QR code below or email us at contact@wasserstein-home.com



CONTACT US



www.wasserstein-home.com

Made in China