

W

WASSERSTEIN

Solar Panel

For Eufy Video Doorbell 2K (Battery-Powered)

User Manual



Table of Contents

Package Includes	2
Safety Information	2
Pre- Installation	2
Installation	2
Mounting the Solar Panel	3
Detaching the Doorbell	3
Installation Tips	3
Troubleshooting	4
Specifications	4

Package Includes

- 1 x Solar Panel (with Micro USB Cable)
- 4 x Screws
- 4 x Wall Anchors
- 1 x Solar Panel Mount
- 1 x Backplate
- 1 x Manual



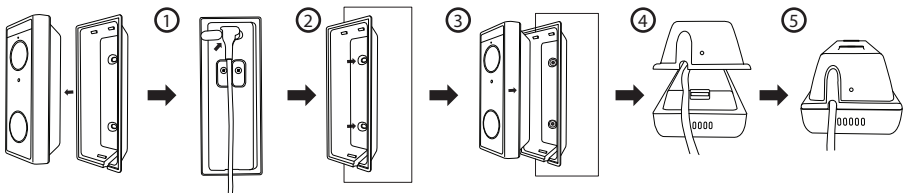
Safety Information

- Disassembling the solar panel is not recommended as it may cause damage to internal components. The solar panel may not function properly after disassembly.
- Do NOT leave bare wires exposed outside the wall canopy enclosure.

Pre- Installation

1. Before setup, please ensure that the Eufy Video Doorbell 2K is fully charged.
2. If you have previously installed Eufy Doorbell, please remove it and unmount any mount or backplate installed

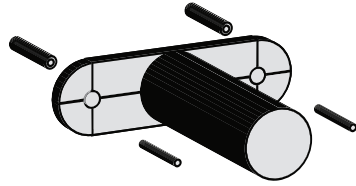
Installation



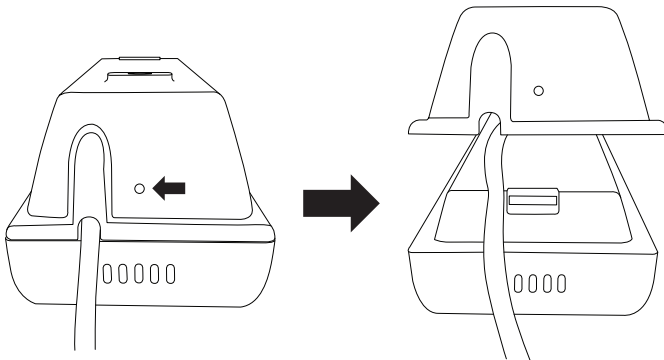
1. Connect the micro USB charging cable to the Eufy Doorbell. Press in firmly.
2. Mount the backplate on the wall by the anchors and screws with the USB cable opening at the bottom.
3. Install the Eufy doorbell on the backplate by snapping it on.
4. Make sure the cable is tucked through the opening.
5. Push the doorbell towards the backplate until you heard a "click" sound.
6. If it doesn't sit properly or you don't hear a click, re-check that you've fully tucked any excess wire back into the hole.
7. After the doorbell is firm in its position, switch it on and it is ready for use or installation if you have not set it up yet.

Mounting the Solar Panel

You can mount your device directly onto wood using the included screws. If you are mounting onto brick, concrete, or stucco, mark the holes first using the bracket, drill a hole for the anchors. You can then insert the anchors and subsequently use the screws to secure the mount.



Detaching the Doorbell



1. Use the doorbell detaching pin and insert it into the pin hole at the bottom of the backplate if you wish to detach the doorbell from the backplate.
2. Insert and press the pin in the hole at the bottom of the doorbell.
3. After the backplate has been loosened from its firm position via the pin insertion, you can lift it off and remove it from the doorbell camera.

Important Tips

The amount of energy that the solar panel can produce is determined by sunlight exposure, weather conditions, etc. To maximize the power generated by your solar panel, please do the following:

- Choose the best location for your solar panel to get maximum sunlight exposure throughout the day.
- Clean the surface of the solar panel regularly to remove any collected dust which otherwise might affect the energy conversion.

Troubleshooting

To troubleshoot problems with your Eufy Video Doorbell 2K (Battery-Powered) Solar Panel

1. Unplug and re-insert both ends of the solar panel charging cable.

To unplug the charging cable and reinsert it into the solar panel, you must squeeze the sides of the plug. The sides of the plug click into place when the plug is fully inserted into the solar panel.

2. Make sure that your solar panel is pointed toward the sun and is not obstructed by trees, buildings, or other obstacles.

Specification

· Material	: ABS + PC
· Power	: 2.5W
· Output Voltage	: 5V
· Solar panel size	: 7.9 x 5.6 x 0.5 inches (200 x 142 x 13mm)
· Cable length	: 13.1ft (4m)

Eufy Video Doorbell 2K (Battery-Powered) not included.

Wasserstein is a trademark of Dropcases Ltd.

Wasserstein is not affiliated with Anker Innovation, Inc.

Eufy Video Doorbell 2K (Battery-Powered) is a trademark of Anker Innovation, Inc.

For more information, please visit:

www.wasserstein-home.com

or contact us at:

contact@wasserstein-home.com

Made in China