

Epilator

USER MANUAL



DARTWOOD

a WASSERSTEIN brand

Overview

Introducing the Dartwood Epilator, a premium grooming device that removes unsightly hair with its precise tweezer rotators. Boasting two adaptable heads, one for shaving and the other for epilation, and two different speed modes, this is the epitome of versatility. Furthermore, the Dartwood Epilator is both rechargeable and easy to clean, making it a time-saving and efficient solution for your hair-removal needs.

In the Box



1 x epilator



1 x shaver head



1 x brush



1 x USB
charging cable

Safety Information

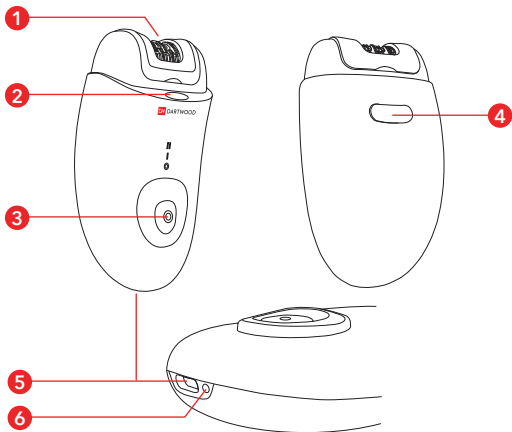
- Do not use the device on any skin that may be inflamed or damaged, as it may cause additional irritation or lead to infection.
- The device is not recommended for use on the face and other sensitive areas such as eyebrows, eyelashes, thread and even clothes.
- Keep the device and its attachments out of reach of children to avoid injury or misuse.
- Do not use the device near water or other liquids to avoid the risk of electric shock.
- Should you encounter any discomfort or pain while using the device, we strongly advise you to discontinue its use right away and seek the advice of a qualified medical professional.
- To avoid skin irritation or damage, do not use the device longer than the recommended time.
- Keep the device and its attachments clean and free from hair and debris to ensure proper functioning and longevity.
- To avoid injury or damage, only use the device for its intended purpose as described in this user manual.

Getting Started

Before using the Dartwood Epilator, it is important to ensure your skin is thoroughly clean and dry. This will help to prevent irritation and improve the effectiveness of the device. To get ready for use, it's best if you:

- Take a shower or bath to clean your skin thoroughly. Make sure to remove any dirt, oil, or sweat from your skin.
- Dry your skin completely using a clean towel. Do not apply any lotions or creams to the skin before using the Dartwood Epilator.
- Ensure the device is fully charged before use. Connect it to the charging cable and allow it to charge for 90 minutes.

Introduction to Parts



1. 32 tweezers
2. light
3. on/off power
4. pop-up button for head attachment
5. type-C socket
6. LED charging indicator

Charging

The Dartwood Epilator is powered by a rechargeable battery that provides up to 60 minutes of use on a single charge. Follow these steps to charge the device:

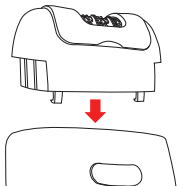
1. Plug the charging cable into a power source of 5V 1A, such as a power adapter or a USB port on a computer.
2. Set the switch to 0 and connect the device to the charging cable provided in the package.
3. The LED indicator light on the device will flash, indicating that it is charging.
4. Let the Dartwood Epilator charge for the recommended amount of time, which is typically about 90 minutes.
5. When the battery is fully charged, the LED indicator light will steady on, indicating that the Dartwood Epilator is ready for use.
6. Disconnect the charging cable from the device and the power source.

NOTE: The device should not be used while it is charging, as this can damage the Dartwood Epilator or increase the risk of electric shock. Always make sure that it is fully charged before using it to ensure optimal performance.

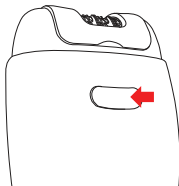
How to Use

1. Select the appropriate head that matches your specific requirements.
2. Securely attach the desired head to the device. Make sure the head is properly aligned and locked in place.

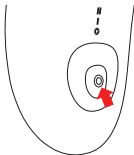
a) Align and lock the head in place



b) Press to release the head

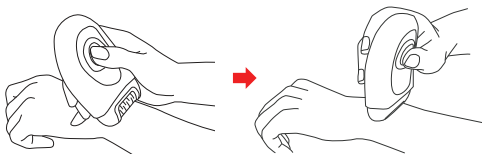


3. Turn on the device by pushing the power button located on the handle.



4. Select the desired speed setting by pushing the power button located on the handle. The device has two speed settings, high (II) and low (I).

5. Hold the Dartwood Epilator at a 90-degree angle to your skin and move it against the direction of hair growth. Glide the Dartwood Epilator over the skin in smooth, continuous motions, making sure to cover the entire area you wish to remove hair.



6. To get the best results, we recommend pulling the skin taut with your free hand if possible. This lets the tweezers grip the hair more effectively.
7. Epilator quality is better when the hair has optimum length of 3 mm to 4 mm. Avoid going over the same area multiple times to prevent skin irritation.
8. After use, turn off the device and detach the head for cleaning.

NOTE: The epilation process can be uncomfortable for some users, especially during the first few applications. This is because the Dartwood Epilator is removing hair from the root, which can be a painful pulling sensation. If you experience discomfort or pain during use, stop using the device immediately and consult a medical professional. With regular use, the discomfort should decrease as the skin becomes more used to the process.

Cleaning and Maintenance

1. Once you have finished using the Dartwood Epilator, turn it off. Press the button at the back of the unit, then pull the head up.
2. Use the cleaning brush included with the device to remove any remaining hair or debris from the tweezers.
3. Rinse the head under running water to remove any residue hair or debris from the tweezers.
4. Leave the head in a dry, cool place until it is dry.
5. Clean the device and its attachments regularly to prevent the buildup of hair, dust, or other debris that may affect performance.
6. Do not immerse the entire device in water, as this can damage the device or cause electrical hazards.
7. Do not use harsh chemicals, such as alcohol or bleach, to clean the device or its attachments, as this can damage the device and reduce its lifespan.

Attention: Important Notice

The device and its accessories should be disposed of in accordance with local regulations for electronic waste. In some areas, this may mean taking the device to a designated e-waste recycling facility, while in others, it may mean disposing of the device in the regular trash.

Do not attempt to disassemble the device or its components yourself, as this can be dangerous and may release harmful chemicals into the environment. Instead, contact your local waste management authorities or the manufacturer for guidance on how to dispose of the device safely and responsibly.

Specifications

Hair Removal Tweezers:	32
Speed Control:	2 modes
Battery:	Lithium 3.7 V 600 mAH
Voltage current:	DC 5V / 1A

Get More Support

Scan the QR code below or email us at
contact@wasserstein-home.com



CONTACT US

DW **DARTWOOD**

a WASSERSTEIN brand

www.wasserstein-home.com

Made in China