

# Blink Doorbell Solar Panel

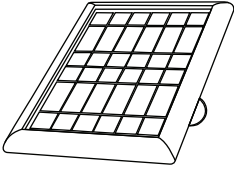
USER MANUAL



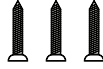
**WASSERSTEIN**

Thoughtful Products for your Smart Home

# In the Box



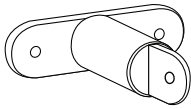
1 x solar panel  
(with micro USB cable)



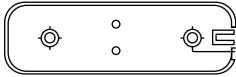
3 x screws



3 x wall anchors



1 x solar panel mount



1 x back plate

Need help? Send us an email at: [contact@wasserstein-home.com](mailto:contact@wasserstein-home.com)

## Safety Information

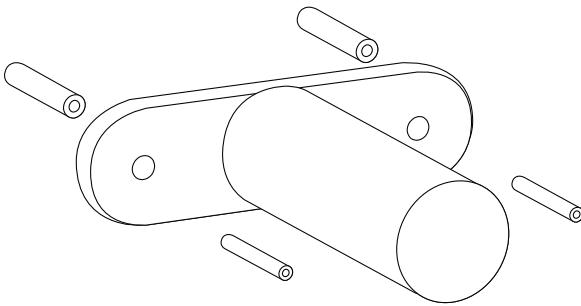
- Disassembling the solar panel is not recommended as it may cause damage to internal components. The solar panel may not function properly after disassembly.
- Do NOT leave bare wires exposed.

## Pre-Installation

1. Make sure your solar panel has been charged in direct sunlight for at least 10 hours.
2. Remove any previously installed doorbell, mount, or backplate.

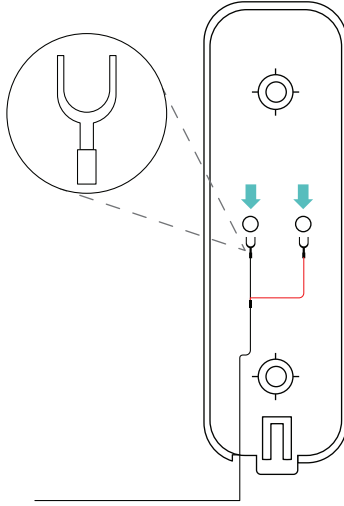
## Mounting the Solar Panel

You can mount your device directly onto wood using the screws provided. If you are mounting onto brick, concrete, or stucco, mark the holes first using the bracket, then drill the holes and insert the anchors before screwing the mount into the wall.

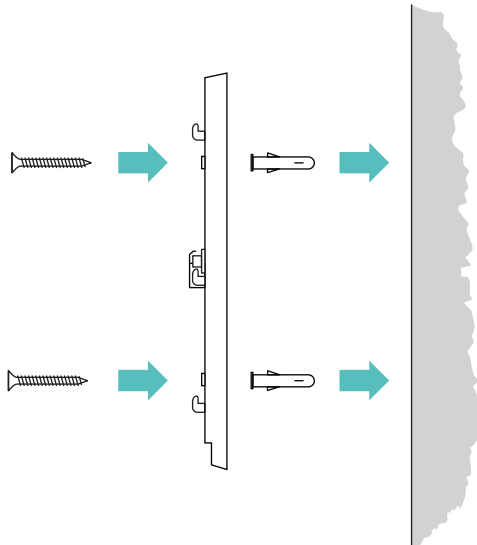


# Installation

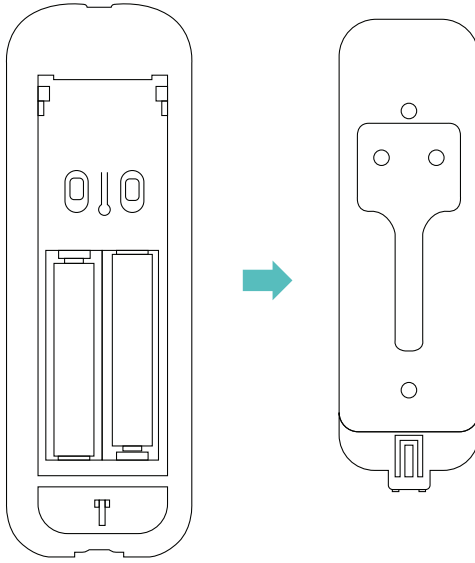
1. Attach the wires to the back of your doorbell. The red wire connects to the right screw. The black wire connects to the left screw.



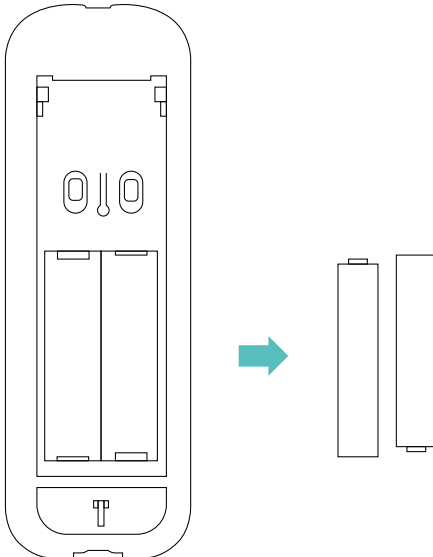
2. Mount our backplate on the wall by the two anchors and two screws provided.



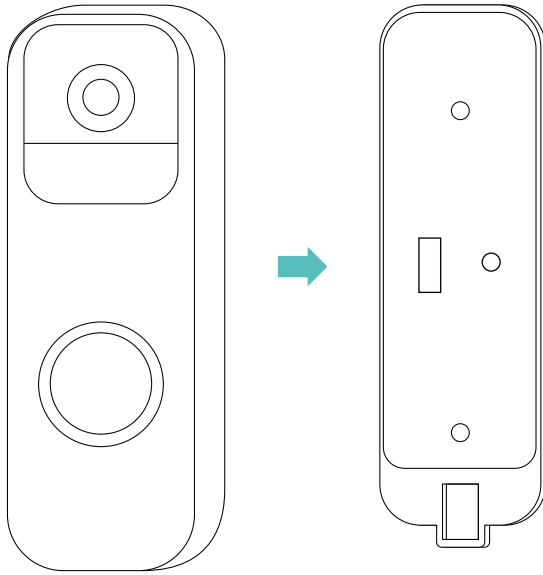
3. Use the key that comes with your Blink doorbell to remove the backplate.



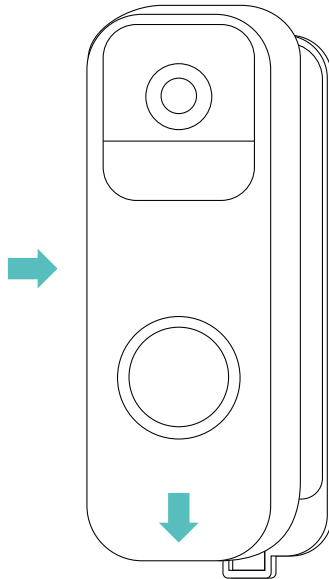
4. Remove any AA batteries from the Blink doorbell.



5. Attach the new backplate to the Blink doorbell.



6. Push the doorbell down gently and it will snap onto the backplate.



## Important Tips

The solar panel's energy output depends on sunlight exposure, weather conditions, etc. To maximize the energy output, remember to do the following:

- Before installing your doorbell, charge the solar panel for at least 10 hours.
- Install your solar panel in an area that receives maximum sunlight.
- Clean the surface of the solar panel regularly to remove dust or dirt that could affect its energy conversion.

## Troubleshooting

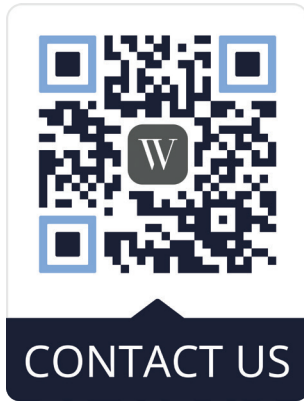
1. Unplug and re-insert both ends of the solar panel charging cable.
2. Make sure that your solar panel is pointed toward the sun and is not obstructed by trees, buildings, or other obstacles.

## Specifications

|                   |   |
|-------------------|---|
| Material:         | ABS + PC                                |
| Power:            | 2 W                                     |
| Output Voltage:   | 3 V                                     |
| Solar panel size: | 7.87 x 5.6 x 0.7 in (200 x 142 x 13 mm) |
| Cable length:     | 13.1 ft (4 m)                           |

# Get More Support

Scan the QR code below or email us at [contact@wasserstein-home.com](mailto:contact@wasserstein-home.com).



Blink Doorbell is not included.  
Wasserstein is not affiliated with Immedia Semiconductor Inc.  
Wasserstein is a trademark of Dropcases Ltd.  
Blink Outdoor is a trademark of Immedia Semiconductor Inc.  
Blink Doorbell is a trademark of Immedia Semiconductor Inc.

**W**  
**WASSERSTEIN**

[www.wasserstein-home.com](http://www.wasserstein-home.com)

Made in China