

Anti-Theft Mount for Blink Video Doorbell

User Manual



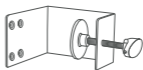
W

WASSERSTEIN

In the Box



1 x plastic housing



1 x metal mount



4 x long screws for
the plastic housing



4 x short screws for
the metal mount



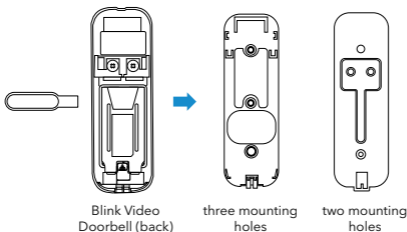
1 x screwdriver

Safety Information

- Read this manual and instructions carefully before use. Failure to follow the safety instructions may cause injury or damage to your property.
- Small parts contained in the box can be a choking hazard. Keep small parts away from children.
- Only use with the Blink Video Doorbell.

Blink Video Doorbell Versions

- There are two versions of Blink Video Doorbell, one with two mounting holes and one with three mounting holes.
- For the two mounting holes, you can keep the doorbell backplate on when it is installed with the anti-theft mount.
- For the three mounting holes, you need to remove the doorbell backplate when installed with the anti-theft mount. Use the key that comes with your Blink Video Doorbell (three mounting holes) to remove the backplate.

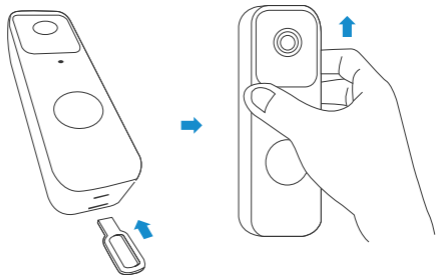


Important Notes

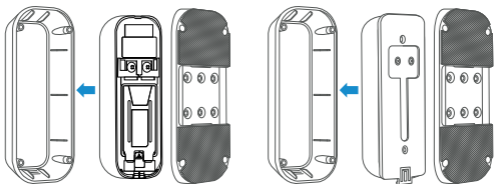
- The doorbell can be turned 180 degrees and mounted on the door that opens in the other direction.
- The door must be opened inwards.
- The door thickness must be 0.9" to 2.3".
- There must be a 1/8" gap between the door and doorframe.

How to Install

Note: Before you install the anti-theft mount, take down your Blink Video Doorbell if it's already installed. Detach the doorbell backplate using the key that comes with it.



1. Put the doorbell inside the housing. Make sure the doorbell fits the front plate.

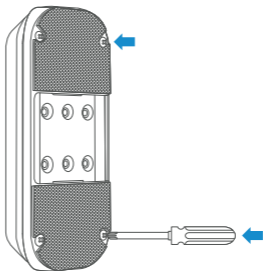


Three mounting holes-
without backplate

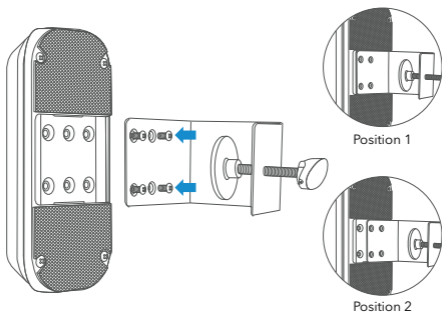
Two mounting holes-
with backplate

Note: Keep the AA batteries inside the doorbell.

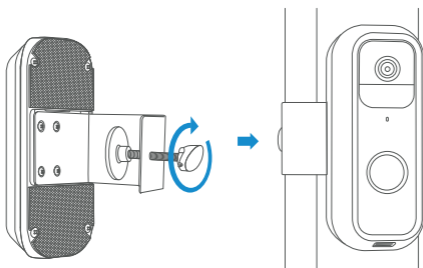
2. Attach and screw in the front plate to the backplate using the four long screws provided.



3. Attach and screw in the metal mount onto the plastic housing using the four short screws provided. There are two positions users can select depending on mounting preference.



4. Position the metal mount on the door and tighten using the back clamping knob.



Specifications:

Materials:	metal / plastic
Dimensions:	5.88 x 4.8 x 5 in
Compatibility:	Blink Video Doorbell

Get More Support

Scan the QR code below or email us at:
contact@wasserstein-home.com



Blink Video Doorbell is not included.
Blink Video Doorbell is a trademark of
Immedia Semiconductor Inc.
Wasserstein is not affiliated with
Immedia Semiconductor Inc.
Wasserstein is a trademark of Dropcases Ltd.

W
WASSERSTEIN
www.wasserstein-home.com
Made in China