

EVO  
GIMBALS



SP-PRO  
GEN.2

3-AXIS HANDHELD GIMBAL  
FOR IOS & ANDROID SMARTPHONES

USER MANUAL  
English v1.0

## IMPORTANT MESSAGE

Thank you for choosing EVO Gimbals as your camera stabilization solution! We know that buying a new product can be very exciting and we are sure that you probably can not wait to use your new gimbal! Before you start PLEASE read this manual and become familiar with your gimbal's components and operating modes.

We highly encourage everyone to also watch our great tutorial videos on our website as a supplement to this manual.

### BATTERY SAFETY!

Your new SP-PRO comes with one (1) Lithium Ion battery that must be handled with care! Here are some simple safety precautions you can take to ensure the best performance for your batteries.

- Always handle your batteries with care.
- Always store your batteries in a cool dry and well ventilated area.
- Never mix the batteries with different brand, type or model battery.
- Always charge batteries in proper charger.
- Keep out of reach of children
- Always pack batteries securely and avoid excessive shock and vibration
- Regularly inspect batteries for exterior wear.
- Never throw your batteries in the trash! Always be sure to recycle them at the appropriate battery recycling center.

Lithium-Ion batteries should not be exposed to extreme temperatures. Heat and cold stress the batteries. Always charge and use your batteries at room temperature. If the battery has been exposed to extreme temperatures, allow the battery to return to room temperature before charging it or using it.

### WARRANTY

Your new gimbal comes with a 1 Year Parts & Labor warranty. Be sure to register your warranty by registering online at [EVOGimbals.com](http://EVOGimbals.com)

### LATEST INFORMATION

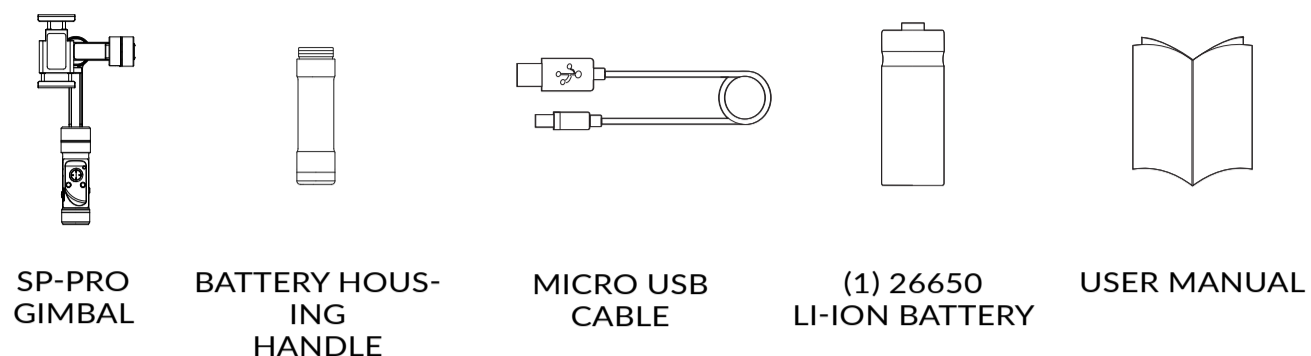
For the latest user manuals, tutorial videos, firmware and calibration instructions please visit our official webpage at [EVOGimbals.com](http://EVOGimbals.com)

EVO  
GIMBALS

Phone: +1 866 977 6688  
Website: [www.evogimbals.com](http://www.evogimbals.com)  
Address: 20810 Sockeye Pl  
Suite 100/200  
Bend, Oregon 97701



# IN THE BOX

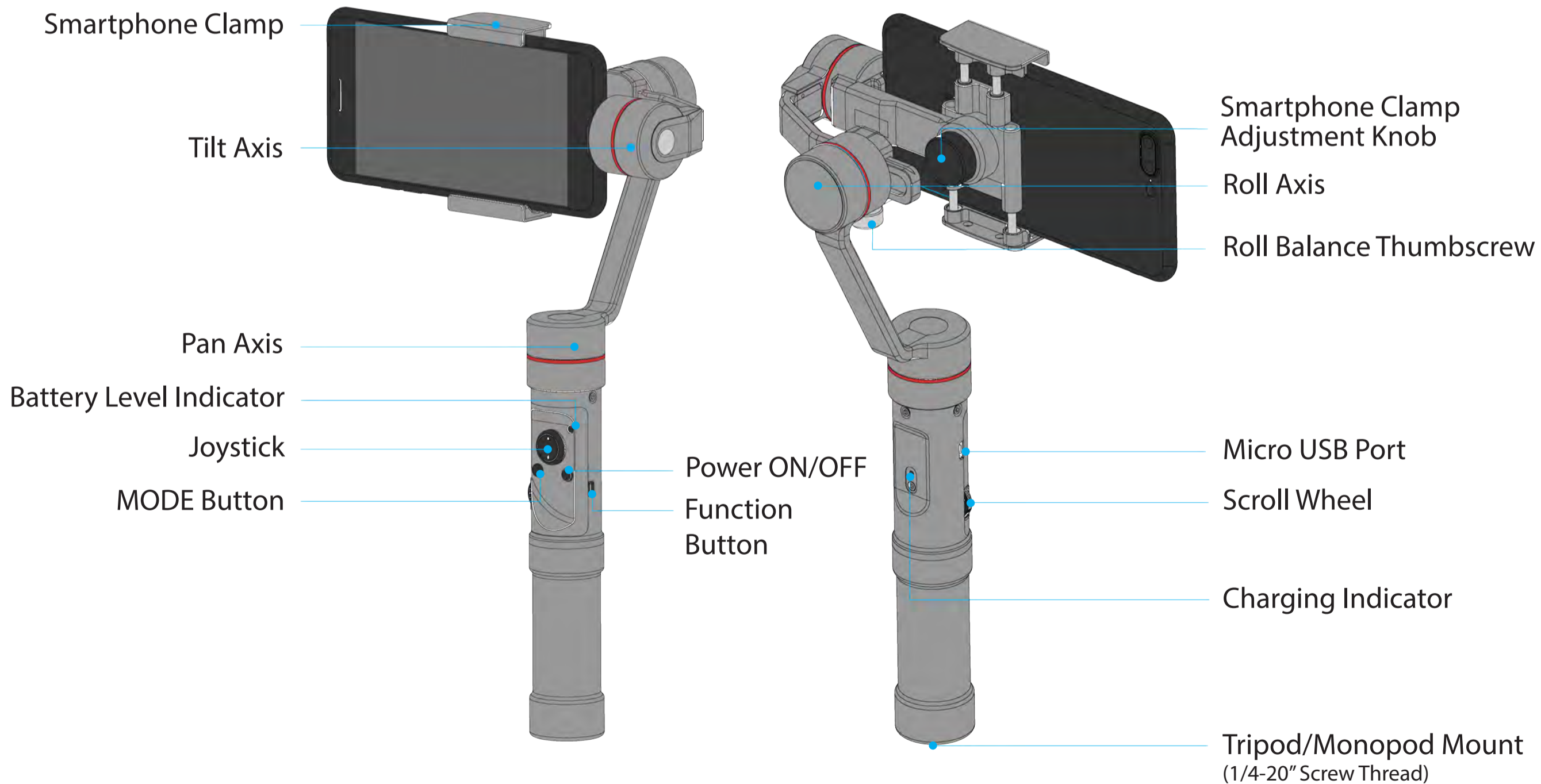
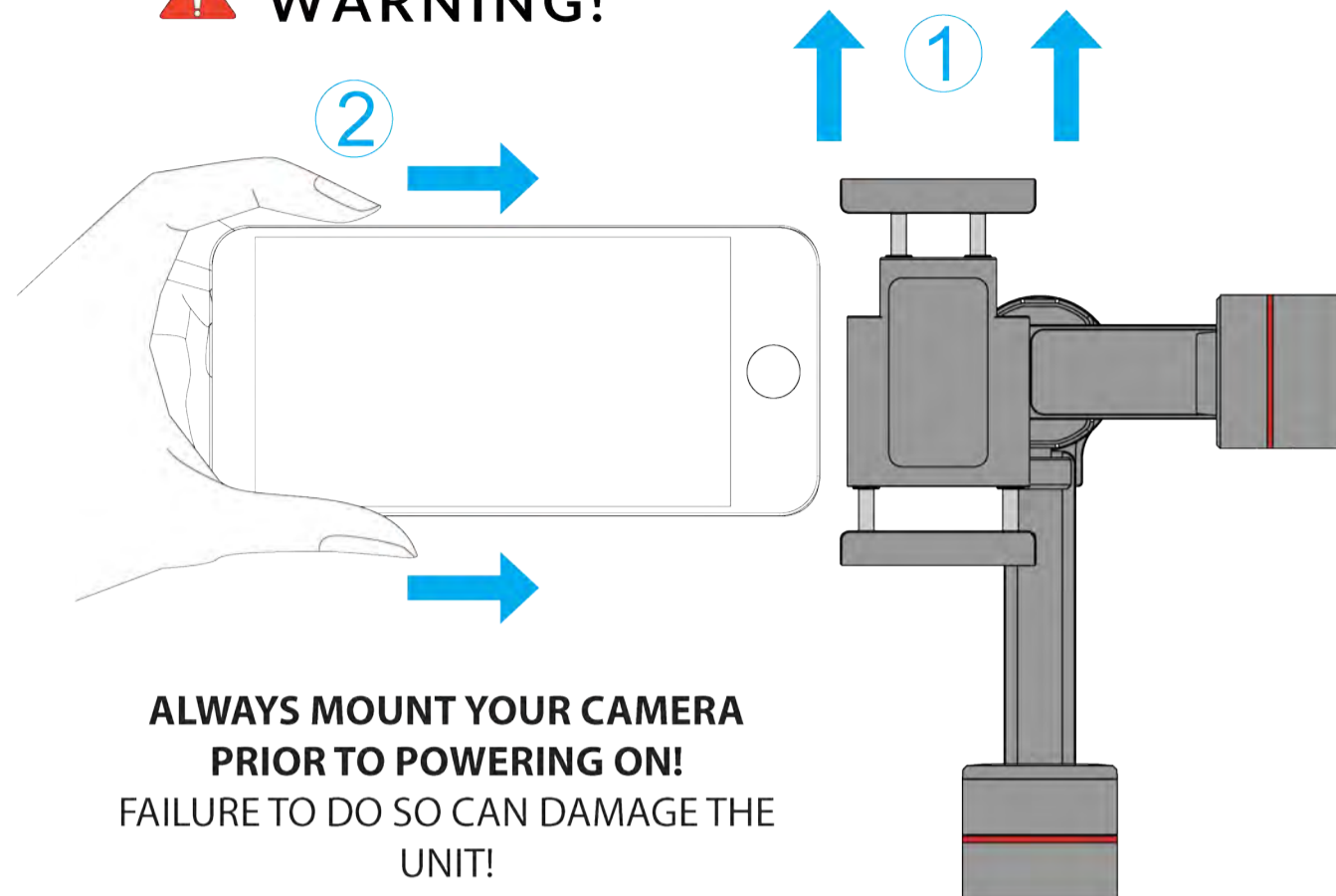


Please check that all items are included, please note that your battery housing handle and battery will come pre-installed out of the box ready to use. If you are missing any items or components please contact your dealer immediately!

## ! IMPORTANT!

Your SP-PRO has an electronic gyroscope that can be affected by temperature. Always ensure proper startup calibration to ensure the best performance. Please refer to our tutorials videos (online) for more information on proper setup, startup and maintenance calibration.

## ! WARNING!

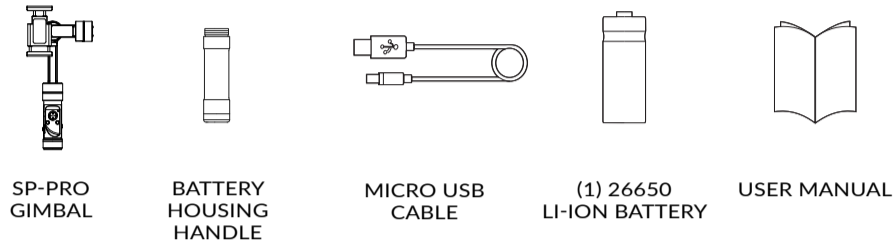


# GETTING STARTED

## 01 UNPACK SP-PRO

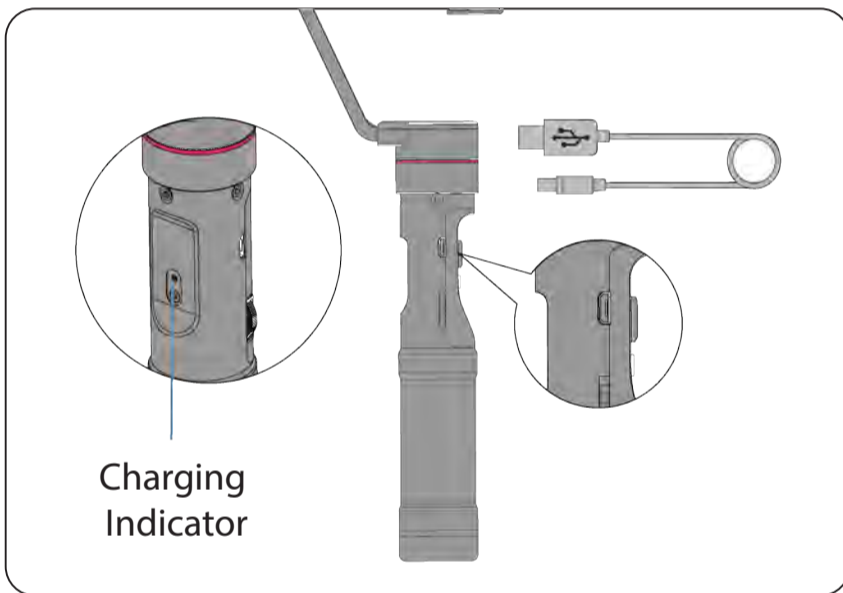
First a big thank you for choosing EVO Gimbals! Before you begin please be sure to unpack your SP-PRO and review your contents list!

Your SP-PRO should be packed with the following items (including this user guide):



## 02 BATTERY INFORMATION

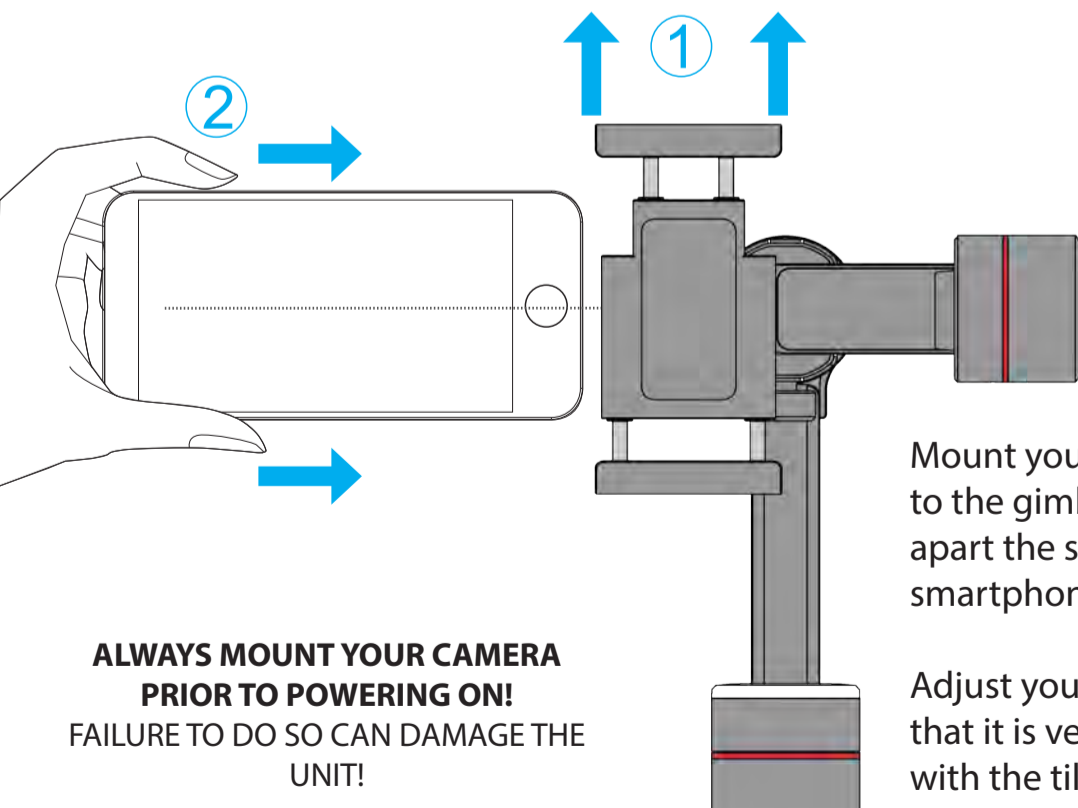
Your new SP-PRO gimbal comes pre-installed with (1) 26650 Li-Ion Battery good for up to 14 hours of runtime. Be sure to charge your gimbal before first use (see charging section for more detail).



**Note:** Your new gimbal comes with built in charging capabilities. Use the provided Micro USB cable with any standard USB wall charger to charge your gimbal's batteries.

Additional batteries can be purchased from your dealer or on [EVOGimbals.com](http://EVOGimbals.com) website.

## 03 MOUNT CAMERA



**ALWAYS MOUNT YOUR CAMERA PRIOR TO POWERING ON!**  
FAILURE TO DO SO CAN DAMAGE THE UNIT!

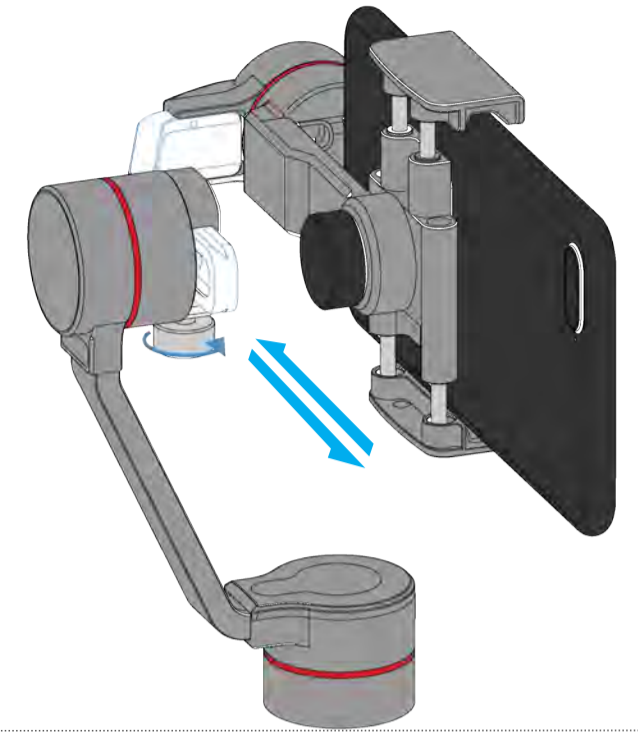
Mount your smartphone to the gimbal by pulling apart the spring loaded smartphone clamp.

Adjust your smartphone so that it is vertically centered with the tilt motor.

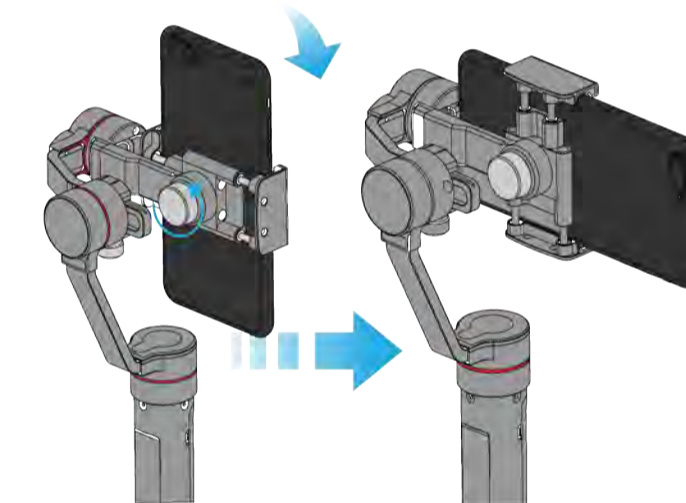
## 04 CHECK ROLL BALANCE

- 1 With the gimbal upright, begin balancing the roll axis by slightly loosening the roll axis thumbscrew.

Make small adjustments by sliding the roll arm left to right so that the smartphone is balanced evenly on the roll axis. The better balanced the smartphone is the less power the motors will consume.



## 05 CHANGE ORIENTATION (OPTIONAL)

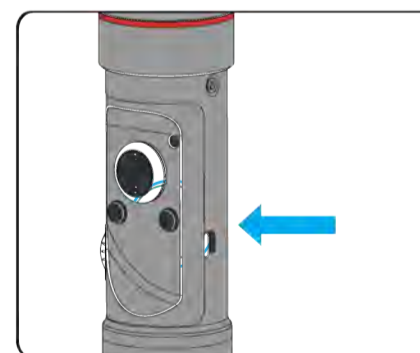


To shoot video in a portrait orientation (common in "Live" social media feeds) loosen the smartphone clamp thumb screw on the back and rotate the clamp 90 degrees.

Tighten the thumbscrew to ensure the clamp is secure.

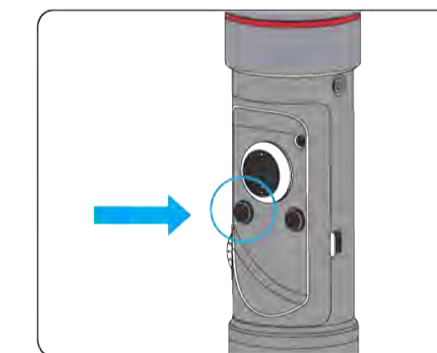
## 06 STARTUP & BASIC USAGE

### POWERING ON:



Press & Hold down the power button and for 3-4 seconds, the motors will automatically power on in the Pan Follow Mode.

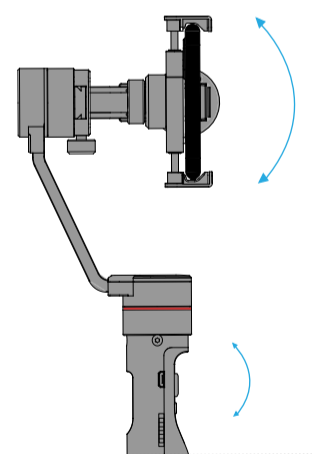
### STANDBY MODE:



Turn motors ON / OFF by depressing the MODE button for 2 seconds.

### SWITCH STABILIZING MODES:

Single click mode button to switch between **Pan Follow Mode** and **Lock Mode**. Double click mode button to enter **Pan and Tilt Follow Mode**.



### Adjust Camera Angle:

Adjust the camera tilt angle by pushing up or down on the thumbstick. Camera tilt can only be adjusted in **Pan Follow Mode** or **Lock Mode**.

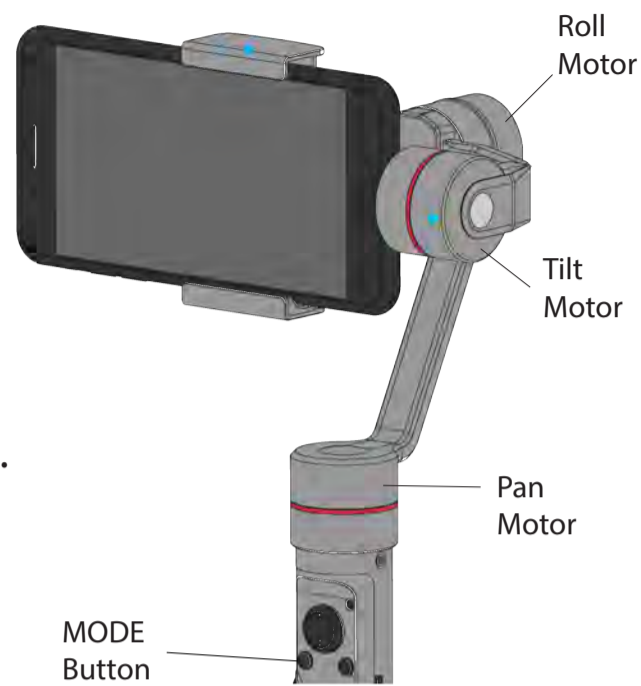
Adjust the camera Pan angle by pushing left or right on the joystick. Camera Pan angle can only be adjusted in **Lock Mode**. Camera horizon (Roll) angle can be adjusted when in **Pan and Tilt Followmode** by pushing joystick left/right.

# OPERATING MODES

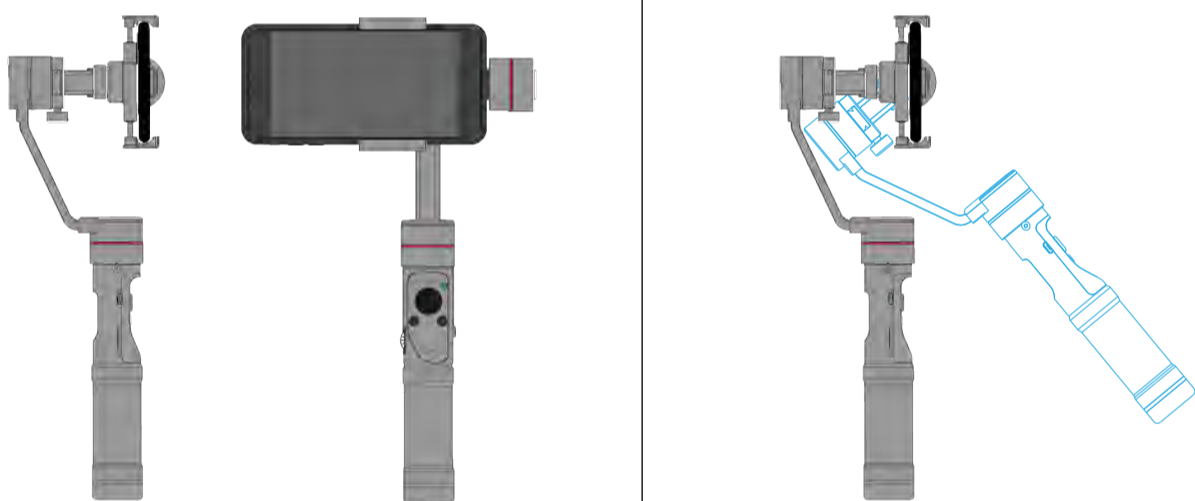
## OVERVIEW

Your SP-PRO gimbal comes pre-programmed with 4 different shooting modes for ultimate creativity.

Please make note of each motor as shown in diagram to the right. You can also view our tutorial videos online to further understand the different operating modes.



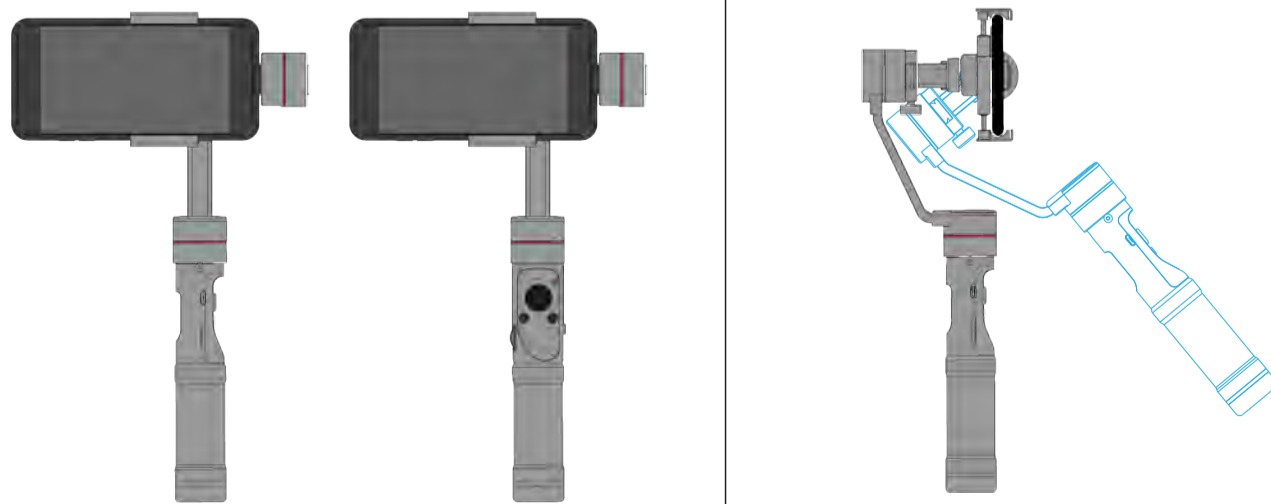
## PAN FOLLOW MODE - 1 CLICK



Tilt & Roll axis are locked.  
Pan axis rotates smoothly with turn of wrist.  
Use thumbstick up and down to control tilt of camera.

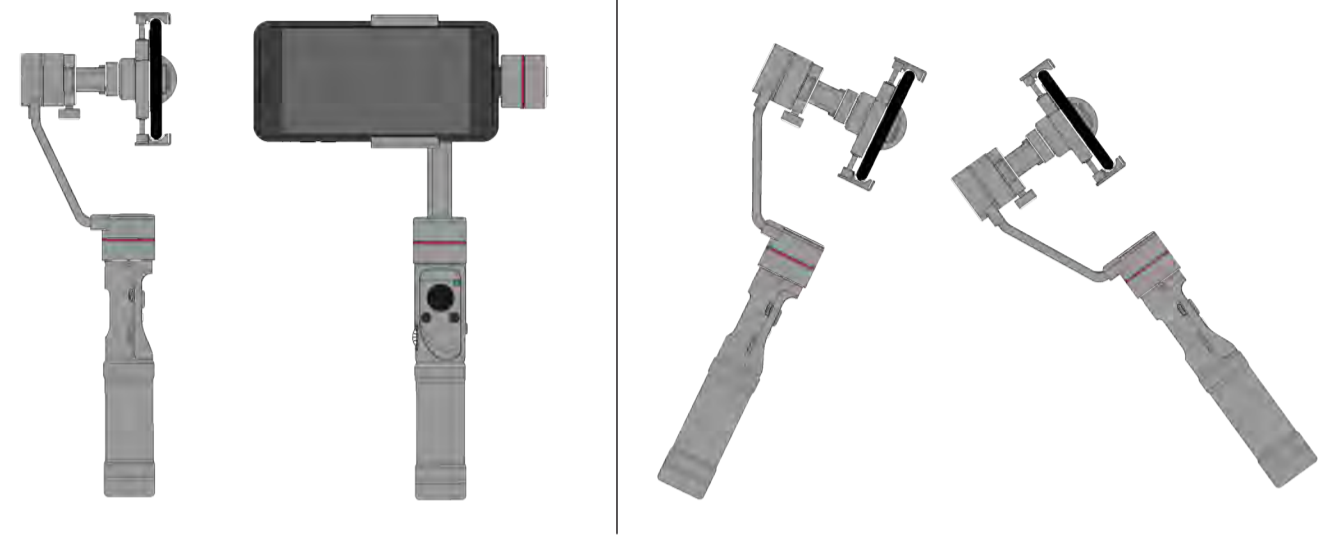
## LOCK MODE - 1 CLICK

● Blue Light = Solid



Tilt, Roll and Pan axis are locked.  
Use thumbstick up and down to control tilt of camera.  
Use thumbstick left and right to manually pan camera left/right

## FULL FOLLOW MODE - 2 CLICKS

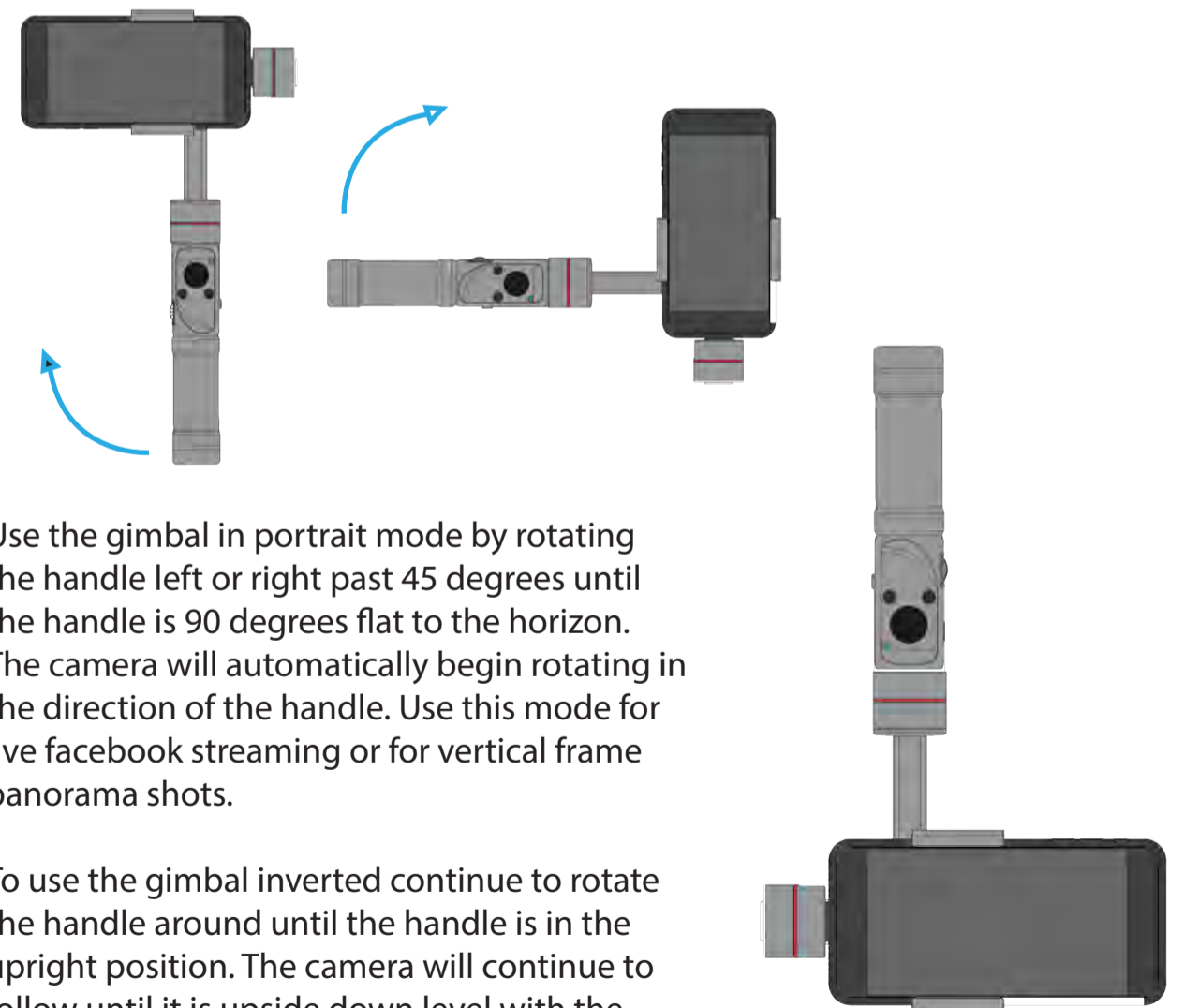


Roll axis is locked. Pan and Tilt axis smoothly follow handle. Use thumbstick left and right to adjust the pan angle.

Single click thumbstick to exit into previous mode.

**Note:** upon exiting this mode the camera tilt angle and horizon angle will remain locked in last position.

## PORTRAIT & INVERTED MODE



Use the gimbal in portrait mode by rotating the handle left or right past 45 degrees until the handle is 90 degrees flat to the horizon. The camera will automatically begin rotating in the direction of the handle. Use this mode for live facebook streaming or for vertical frame panorama shots.

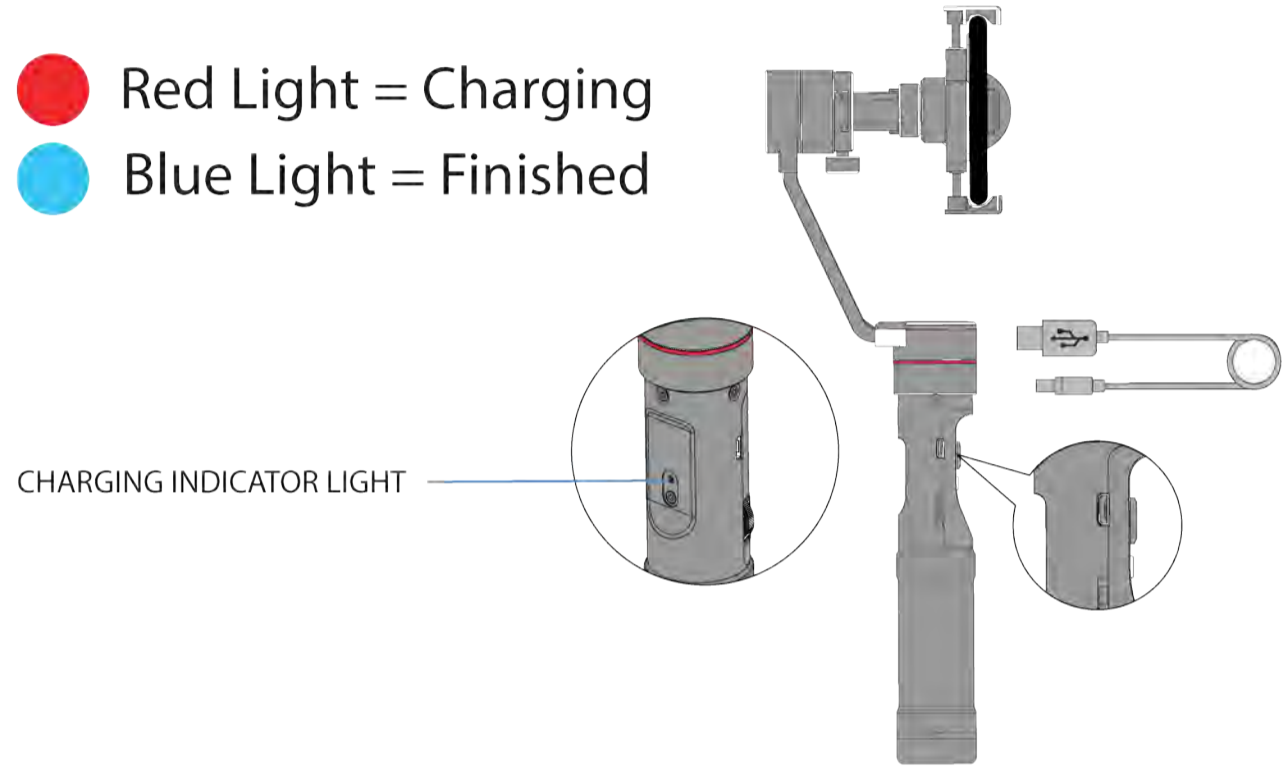
To use the gimbal inverted continue to rotate the handle around until the handle is in the upright position. The camera will continue to follow until it is upside down level with the horizon.

For additional information and video tutorials on switching between modes and their intended uses please go to [EVOGimbals.com](http://EVOGimbals.com)

# CHARGING BATTERIES

Connect the Micro USB Port on the side of the handle to any standard USB outlet or phone charger using the included Micro USB cable. Batteries take approximately 2 to 3 hours to fully charge. Shorter charge times can be achieved using higher mA rating AC/DC adapter.

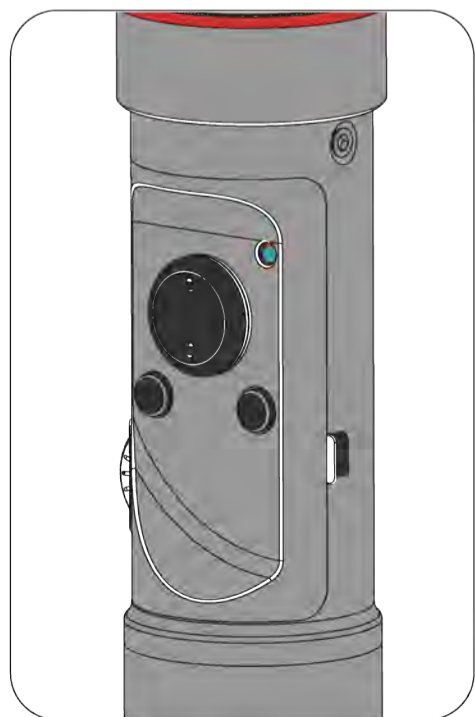
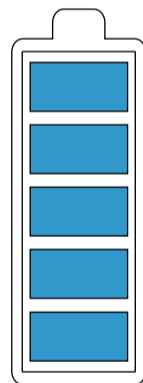
- Red Light = Charging
- Blue Light = Finished



## ⚠ ALWAYS USE GENUINE IMR 26650 OEM BATTERIES!

Your gimbal must be matched with the original batteries to guarantee performance, long life and safety! Never pair different brand or different model batteries together.

Additional batteries can be purchased from your dealer or direct from [EVOGimbals.com](http://EVOGimbals.com)



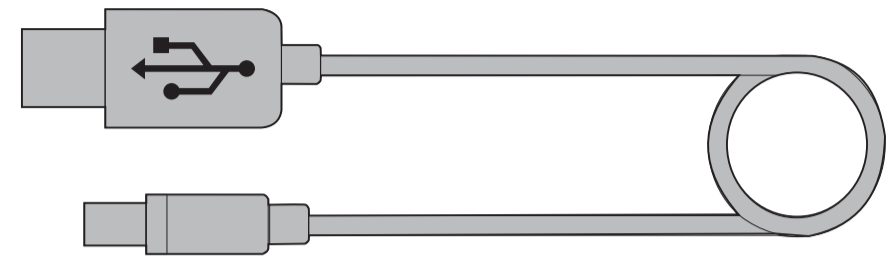
## ● POWER INDICATOR LIGHT

Monitor Remaining Battery Power:

- 4 Flashes = 75-100%
- 3 Flashes = 50-75%
- 2 Flashes = 25-50%
- Flashes Quickly = 0-25%

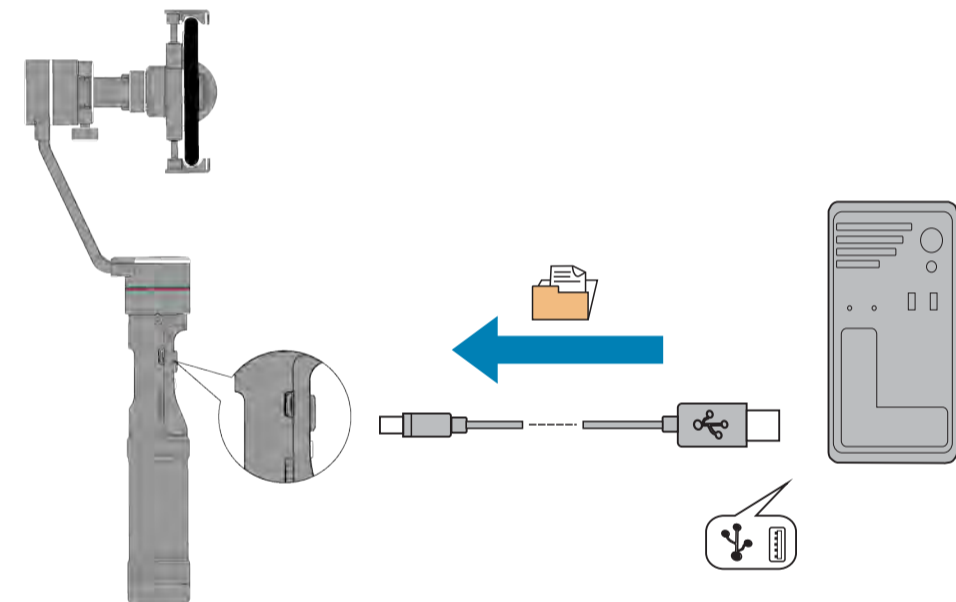
# USB CONNECTION

## FIRMWARE UPGRADE / SOFTWARE CALIBRATION



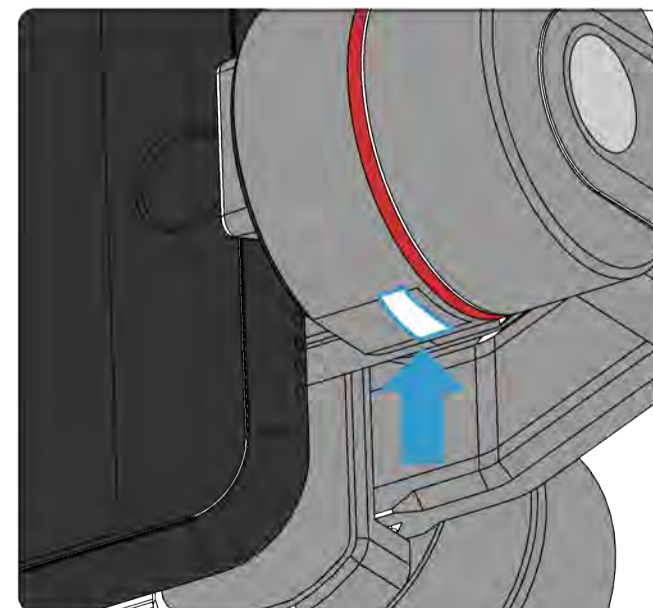
Connect gimbal to your computer using the included Micro USB cable to upgrade the firmware or to use the software calibration tool.

For the latest firmware upgrades, user manuals and software calibration please visit [www.EVOGimbals.com](http://www.EVOGimbals.com) and click on Downloads.



**TIP:** For extended run times you can use a portable external power bank to charge the gimbal while in use!

## AUXILLARY CHARGE PORT FOR YOUR SMARTPHONE



Your SP-PRO gimbal features a micro USB charging port on the bottom of the tilt motor. This port can be used with a dedicated charging cable available from EVO allowing you to charge your smartphone while in use on the gimbal.

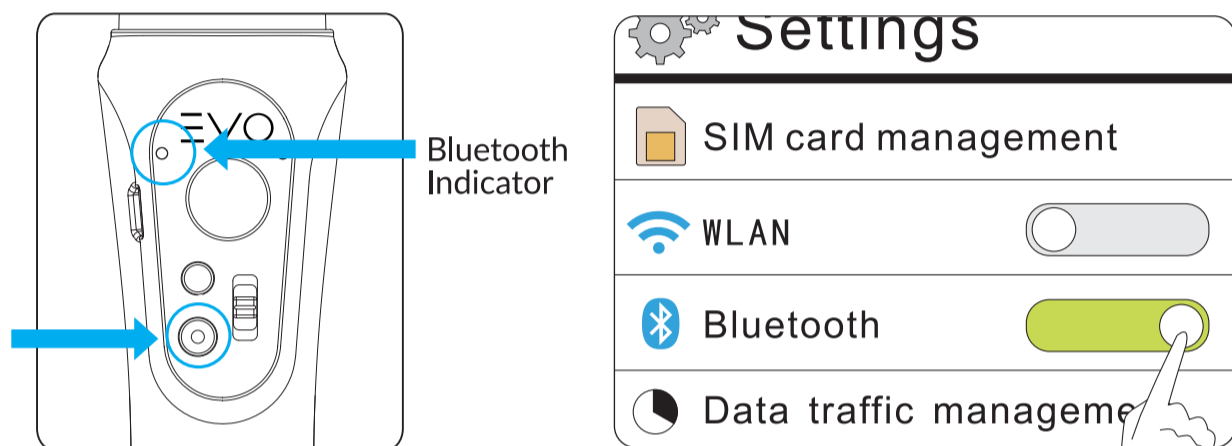
# CONNECT TO EVO GIMBALS APP

## DOWNLOAD APP

For Android users (Supports Android 4.3+) please download Android APP from Google Play.

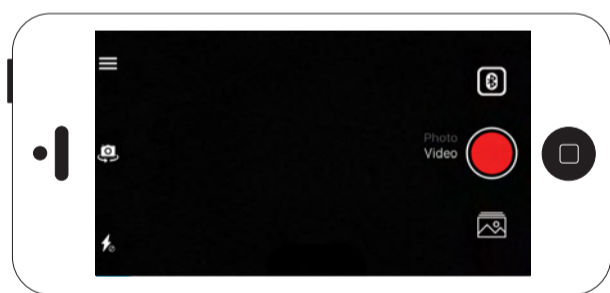
For iOS users please search and download APP ("EVO GIMBALS APP") on the iOS APP store.

## CONNECT TO YOUR GIMBAL



**01** Power on gimbal by pressing power button.

**02** Turn on Bluetooth in your smartphone settings menu.



Open the EVO Gimbals APP and search for the EVO SP-PRO bluetooth signal by selecting the bluetooth icon on the upper right corner of the screen.



Select the EVO SP-PRO from the device list and the APP will automatically connect.



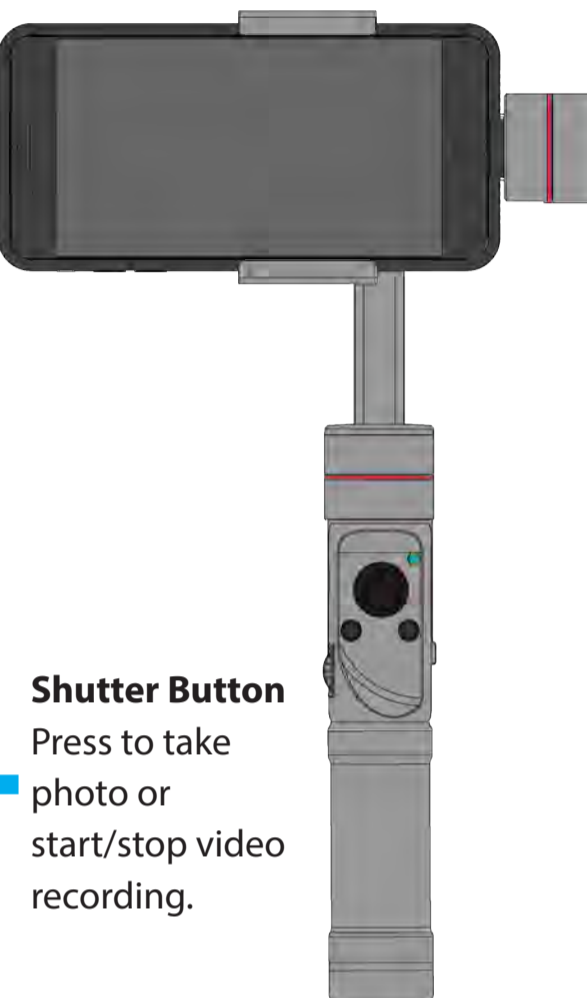
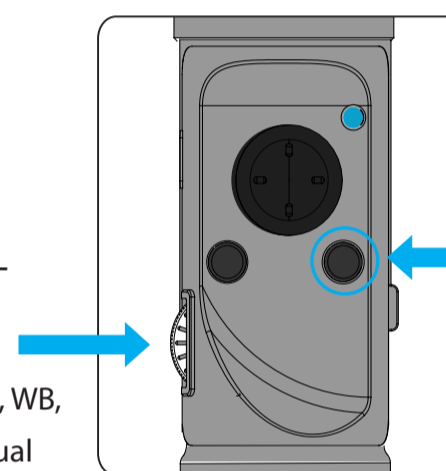
For the latest information on the EVO Gimbals APP and its function please go to [EVOGimbals.com](http://EVOGimbals.com)

## TAKING PHOTOS & VIDEOS

After your gimbal is connected you can begin shooting photos and video by using the controls on the handle. Basic shooting functions such as start/stop, zoom in/out can be accessed by default. For advanced camera control you must have manual mode turned ON in the camera

**Scroll Wheel**  
Zoom IN/OUT

(Control ISO, AF, WB, ETC when manual mode set to ON)



**Shutter Button**  
Press to take photo or start/stop video recording.

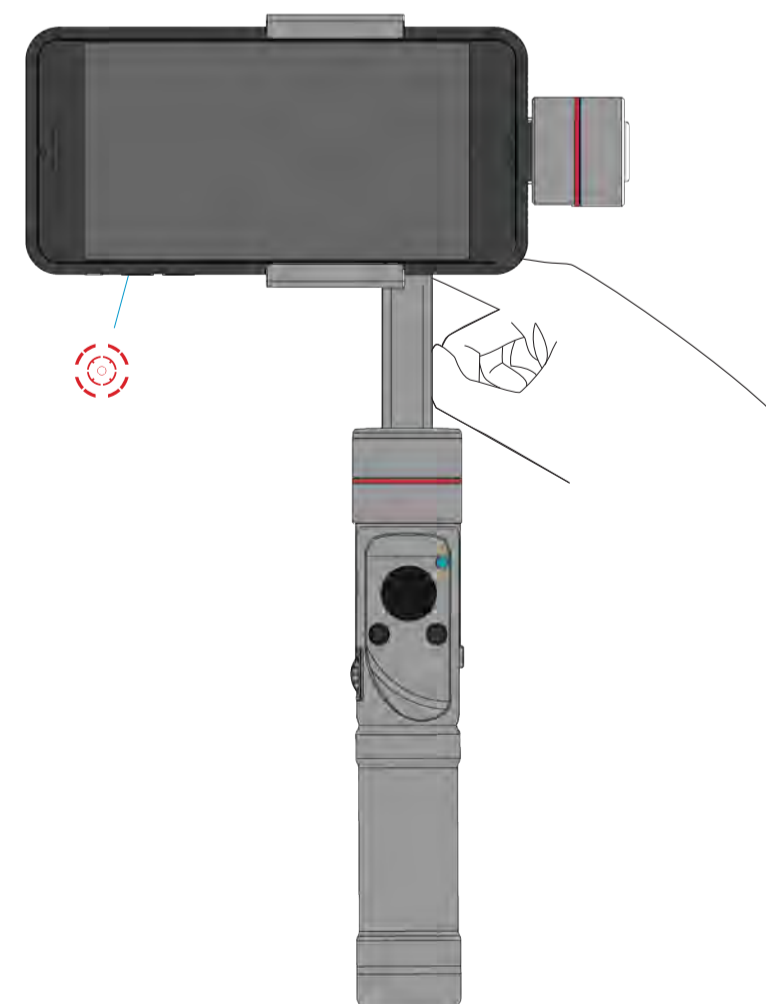
## ACTIVATE SMART TRACK

Smart Track can be activated with the gimbal is in Lock Mode.

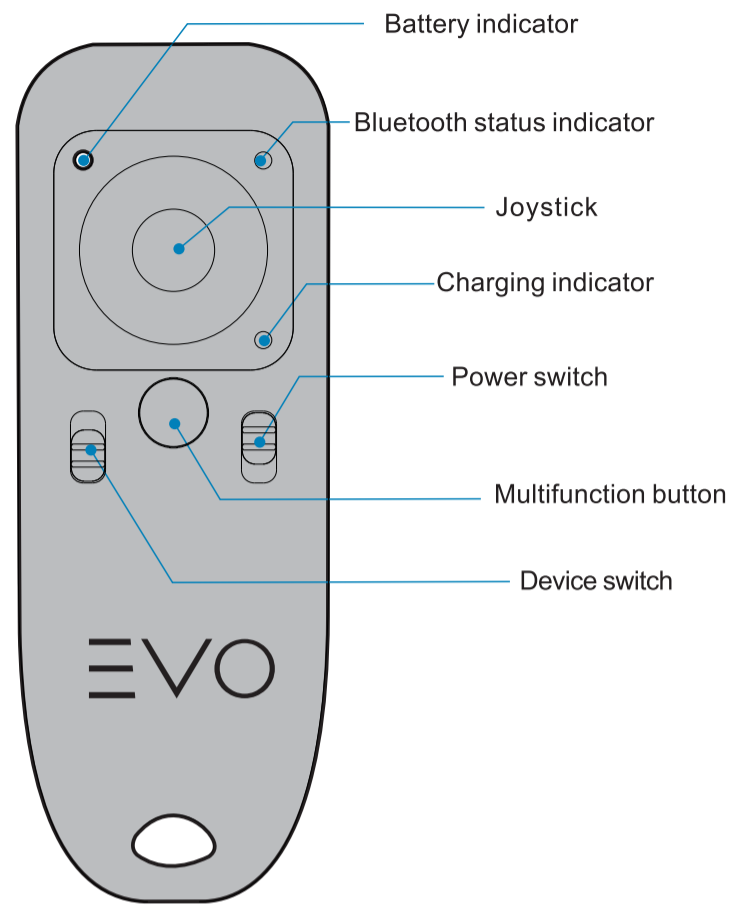
Activate Smart Track Object tracking by selecting the Smart Track icon on the bottom left side of the screen.

Swipe your finger across the person or object you would like to track.

The gimbal will automatically track the person or object as they move.



# WIRELESS REMOTE



## Wireless Remote Binding Instructions

1. Place remote within 5 feet of gimbal.
2. Hold down the multifunction button while switching on the power switch.
3. Bluetooth Indicator light will rapidly flash while connecting. Indicator light will illuminate solid when connected successfully.

**Note:** Wireless remote sold separately.



### Battery Indicator

- 4 Flashes = 75-100%
- 3 Flashes = 50-75%
- 2 Flashes = 25-50%
- Flashes Quickly = 0-25%

### Bluetooth Status Indicator

- Continuous Flashing = Not Connected
- Solid Light = Connected
- Flash Once = Device Switch

### Charging Indicator

- Red = Charging
- Green = Fully Charged

### Power Switch

- UP = Power On
- DOWN = Power Off

### Device Switch

- UP = Remote Control
- DOWN = Smartphone Control

### Multifunction Button

- Single click to return gimbal to original position.

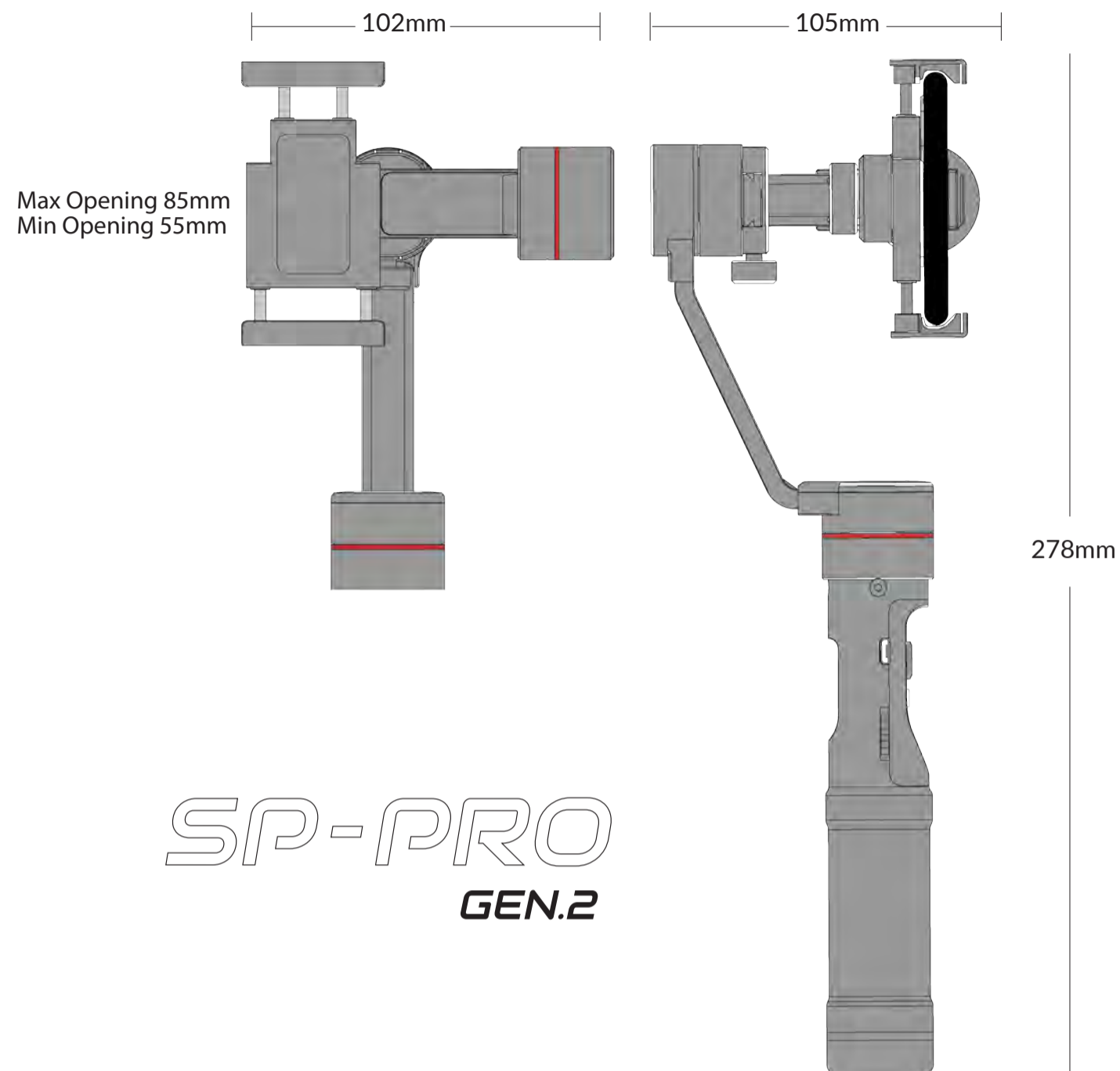
### Joystick

- Single Click the joystick to switch between operating modes. Heading Follow Mode (default) and Heading Lock Mode.
- Double Click the joystick to enter Heading & Pitch Follow Mode. Single click the joystick again to exit this mode and return to previous mode. Please refer to the Operating Modes section of the manual for more details.

### Remote Specifications:

- Charging Voltage: 5V
- Battery Life: ~30 Hours
- Battery Capacity: 150mAh
- Transmit/Receive Current: 11.9mA
- Normal Operating Current: 2.8mA
- Max Control Distance: ~30' Feet

# SPECIFICATIONS



# SPECIFICATIONS

## Dimensions:

- Length: 105mm
- Width: 102mm
- Height: 278mm

## Operating Current:

80mA-6000mA

## Operating Temperature:

5F°-115F° (0C°-45C°)

## Run-Time:

3-4h

## Gimbal Weight:

265g (no batteries)

## Camera Payload:

130g-225g

## Tilt, Roll, Pan Axis Range:

360° (unlimited rotation)

## Battery:

Lithium Ion

## Battery Type:

IMR 26650

## Battery Voltage:

3.7V

## USB Charger Current:

800mAh

## USB Charger Input Voltage:

5V USB

## LIMITED WARRANTY

EVO Gimbals ("EVO Gimbals") warrants this product against defects in material or workmanship for the time periods and as set forth below. Pursuant to this Limited Warranty, EVO Gimbals will, at its option, (i) repair the product using new or refurbished parts or (ii) replace the product with a new or refurbished product. For purposes of this Limited Warranty, "refurbished" means a product or part that has been returned to its original specifications. In the event of a defect, these are your exclusive remedies.

**Labor:** For a period of one (1) year from the original date of purchase of the product ("Labor Warranty"), EVO Gimbals will, at its option, repair or replace with new or refurbished product, product determined to be defective. If EVO Gimbals elects to replace the product after this Labor Warranty has expired but while the Parts Warranty below is still in effect, it will do so for the applicable labor charge.

**Parts:** For a period of one (1) year from the original date of purchase of product ("Parts Warranty"), EVO Gimbals will supply new or refurbished replacement parts in exchange for parts determined to be defective.

This Limited Warranty covers only the hardware components packaged with the Product. It does not cover technical assistance for hardware or software usage and it does not cover any software products whether or not contained in the Product; any such software is provided "AS IS" unless expressly provided for in any enclosed software Limited Warranty. Please refer to the End User License Agreements included with the Product for your rights and obligations with respect to the software.

**Instructions:** To obtain warranty service, you must deliver the product, freight prepaid, in either its original packaging or packaging affording an equal degree of protection to the EVO Gimbals authorized service facility specified. It is your responsibility to backup any data, software or other materials you may have stored or preserved on your unit. It is likely that such data, software, or other materials will be lost or reformatted during service and EVO Gimbals will not be responsible for any such damage or loss. A dated purchase receipt is required. For specific instructions on how to obtain warranty service for your product,

Visit Our Official Web Site:  
[www.EVOGimbals.com](http://www.EVOGimbals.com)

Or email EVO Gimbals Customer Support  
[support@evogimbals.com](mailto:support@evogimbals.com)

For an accessory or part not available from your authorized dealer please visit our website.

**Repair / Replacement Warranty:** This Limited Warranty shall apply to any repair, replacement part or replacement product for the remainder of the original Limited Warranty period or for ninety (90) days, whichever is longer. Any parts or product replaced under this Limited Warranty will become the property of EVO Gimbals.

This Limited Warranty only covers product issues caused by defects in material or workmanship during ordinary consumer use; it does not cover product issues caused by any other reason, including but not limited to product issues due to commercial use, acts of God, misuse, limitations of technology, or modification of or to any part of the EVO Gimbals product. This Limited Warranty does not cover EVO Gimbals products sold AS IS or WITH ALL FAULTS or consumables (such as fuses or batteries). This Limited Warranty is invalid if the factory-applied serial number has been altered or removed from the product. This Limited Warranty is valid only in the United States.

**LIMITATION ON DAMAGES:** EVO GIMBALS SHALL NOT BE LIABLE FOR ANY INCIDENTAL OR CONSEQUENTIAL DAMAGES FOR BREACH OF ANY EXPRESS OR IMPLIED WARRANTY ON THIS PRODUCT.

**DURATION OF IMPLIED WARRANTIES:** EXCEPT TO THE EXTENT PROHIBITED BY APPLICABLE LAW, ANY IMPLIED WARRANTY OF MERCHANTABILITY OR FITNESS FOR A PARTICULAR PURPOSE ON THIS PRODUCT IS LIMITED IN DURATION TO THE DURATION OF THIS WARRANTY.

Some states do not allow the exclusion or limitation of incidental or consequential damages, or allow limitations on how long an implied warranty lasts, so the above limitations or exclusions may not apply to you. This Limited Warranty gives you specific legal rights and you may have other rights which vary from state to state.

## WARRANTY INFORMATION

### WARRANTY PERIOD:

The warranty period is (1) Year from the original date of purchase. During this warranty period, under normal use, EVO Gimbals will at its option, repair and/or replace parts determined to be defective.

### WARRANTY DOES NOT COVER:

1. Any unauthorized maintenance, misuse, collision, liquid infiltration (water damage), or modifications.
2. Incorrect Use of Product: altering software, removing serial numbers/logos, using cameras not approved by EVO.
3. Damage due to fire, flood, acts of God, misuse and related damage.
4. Any prepaid freight for warranty service.

### WARRANTY SERVICE:

If any product issues arise please contact your dealer first. Many gimbal performance problems can be solved with a simple calibration sequence. Be sure to visit [www.EVOGimbals.com](http://www.EVOGimbals.com) for the latest tutorial videos.

If it is found that service on your gimbal is needed please visit our official website ([www.EVOGimbals.com](http://www.EVOGimbals.com)) or email us [support@evogimbals.com](mailto:support@evogimbals.com) to start a warranty claim.

### WARRANTY REGISTRATION:

Please register your warranty so we can provide you with the latest firmware updates, user manuals and tutorial videos. **To register your warranty please and/or obtain warranty service for your gimbal,**

Visit Our Web Site:  
[www.EVOGimbals.com](http://www.EVOGimbals.com)

### CONTACT US:

Email: [support@evogimbals.com](mailto:support@evogimbals.com)  
Online: [www.EVOGIMBALS.com](http://www.EVOGIMBALS.com)  
Phone: +1 866 977 6688  
Address: 20810 Sockeye Pl  
Suite 200  
Bend, OR 97701



The logo for EVO GIMBALS features the word "EVO" in a large, stylized font where the 'V' is formed by two diagonal lines meeting at a point. Below "EVO" is the word "GIMBALS" in a clean, sans-serif, all-caps font. The 'O' in "EVO" is a solid circle.