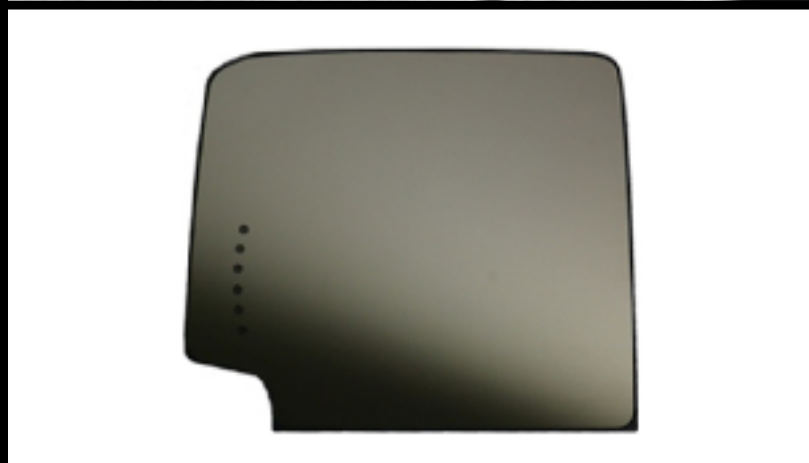
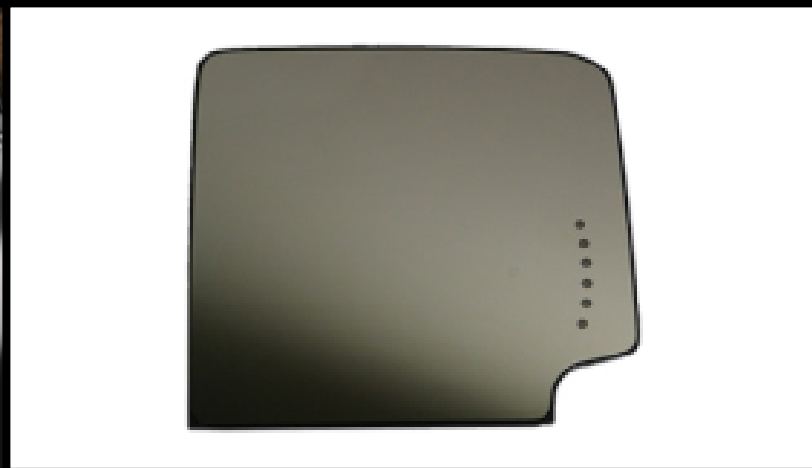


BOOST AUTO PARTS

**2015 Style Tow Mirror
Upper Glass Installation**





INTRODUCTION

This document will be covering the installation of [2015 Style GM Tow Mirror Upper Glass Only](#). This install will take less than 15 minutes per side and only requires basic hand tools and an adhesive.

Boost Auto Parts also offers upper glass with backing for an easier installation. To purchase glass with backing [Click Here](#).

Boost Auto Parts offers other parts and accessories for 2015 Style Tow Mirrors. To purchase additional Tow Mirror parts and accessories [Click Here](#).

TABLE OF CONTENTS

| | |
|---|-----------------------|
| Overview | Pg.3 |
| Removing Upper Glass | Pg.4 |
| Removing Glass from Backing | Pg.7 |
| Installing Glass on Backing | Pg.8 |
| Connecting Signal on Glass and Defrost: | Pg.9 |
| Installing Upper Glass | Pg.10 |

How to Remove and Replace Upper Glass Only on 2015 Style GM Tow Mirrors

For Glass Only Applications

Difficulty: Moderate

Tools Needed: Heat Gun, Putty Knife, Adhesive

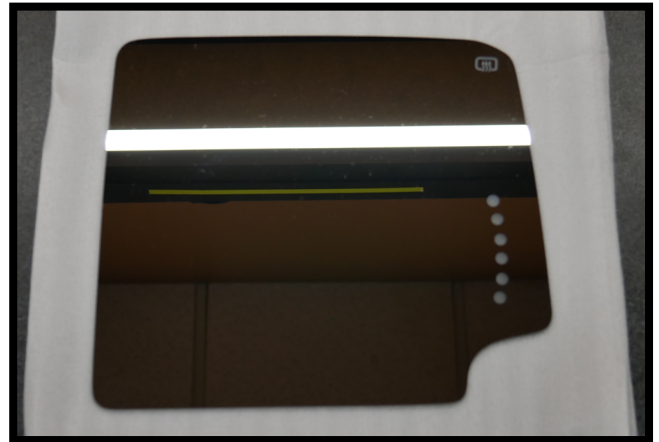
Parts Needed: [GM Tow Mirror Upper Glass \(2015 Style\)](#) (Must Select Glass Only)

Video Tutorial for OEM Mirrors:

[Remove or Replace OEM Tow Mirror Glass](#)

Video Tutorial for Aftermarket Mirrors:

[Remove or Replace Aftermarket Tow Mirror Glass](#)



***Signal on Glass cut-out will only come with the glass if optioned**

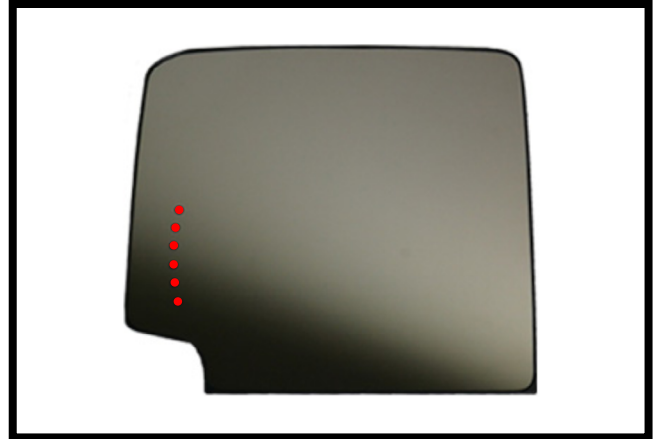


Caution:

Safety glasses should be worn while performing this procedure!



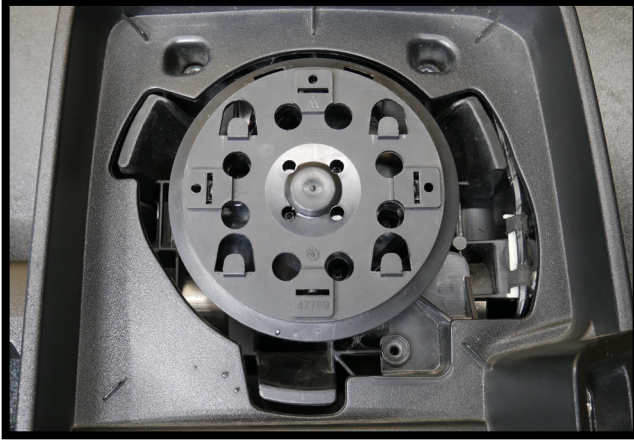
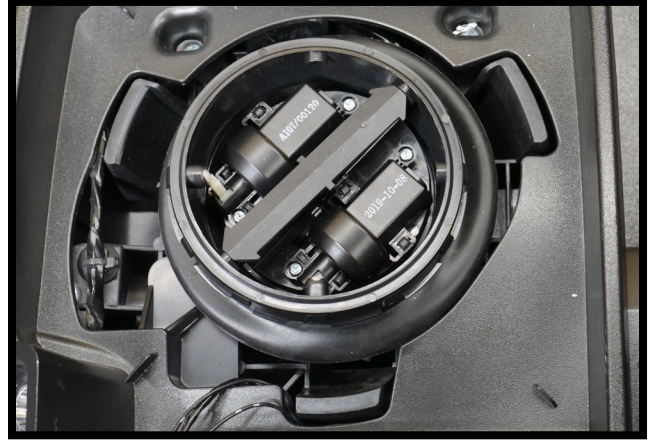
Disclaimer: Disregard portions of the document regarding signal on glass and defrost if your mirrors are not equipped with those options.



Step 1:

Angle the upper glass up as far as it goes.

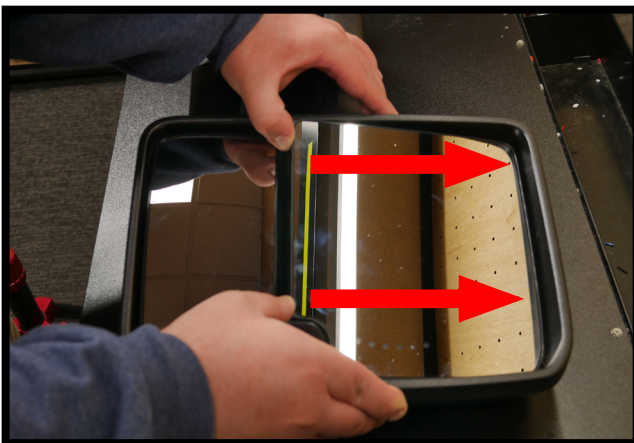


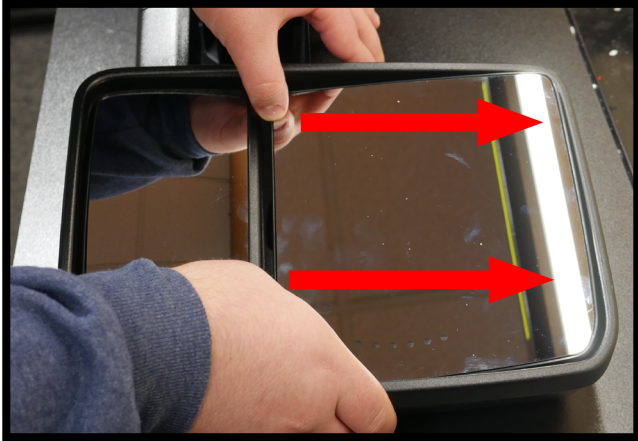
**OEM Tow Mirrors****Aftermarket Tow Mirrors****Step 2:**

OEM upper glass uses a slotted design. Angle the upper glass up as far as it goes. Then, place thumbs on the bottom of the upper glass and push upward toward the top of the mirror.

Step 2:

Aftermarket tow mirrors use a press-fit design. Remove the upper glass by placing hands on the bottom of the upper glass and prying up and away from the mirror.





OEM Tow Mirrors



Aftermarket Tow Mirrors

Step 3:

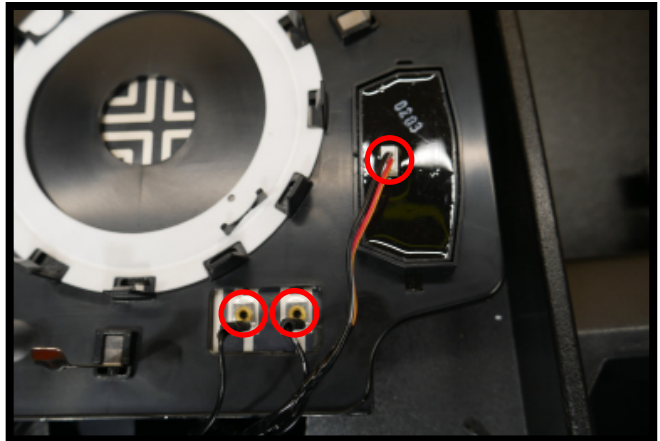
Angle the upper glass down and slide the glass off the rest of the way.

Step 3:

Lift the upper glass up and off of the mount the rest of the way.

Step 4:

Remove the signal on glass and defrost connections from the upper glass (if equipped).



Step 5:

Using a heat gun, apply heat across the entire surface of the glass to warm up the adhesive that sits in between the glass and the plastic backing.



Step 6:

As you heat up portions of the upper glass, work the putty knife around the glass to separate it from the plastic backing.



Disclaimer: If your glass is equipped with defrost, make sure you do not damage any defrost connections when removing the glass from the backing



Caution:

Handle and dispose of broken glass safely and properly!

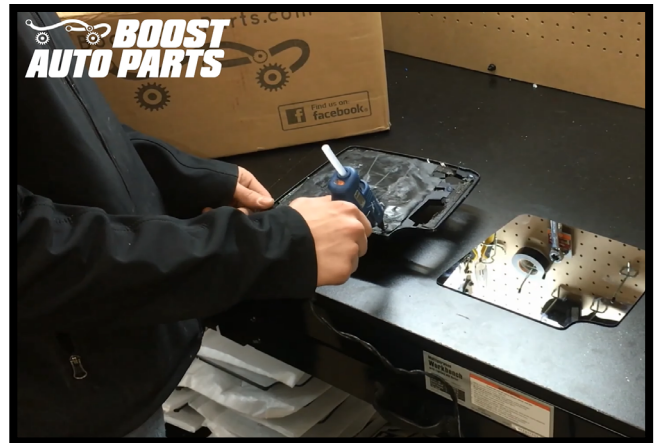
Step 7:

Remove and dispose of the old upper glass until you are left with just the backing.



Step 8:

Attach the new upper glass to the plastic backing. We are using a hot glue gun, but other adhesives will also work to attach your upper glass.



Your glass is now installed onto your backing. Refer to the page below for further instruction.



Connecting Signal on Glass and Defrost



Disclaimer: If your glass is **not** equipped with signal on glass and defrost, refer to [Pg.10](#) If your glass is equipped with those features, refer to the steps below.

Step 1:

Install the defrost wires onto the backing.

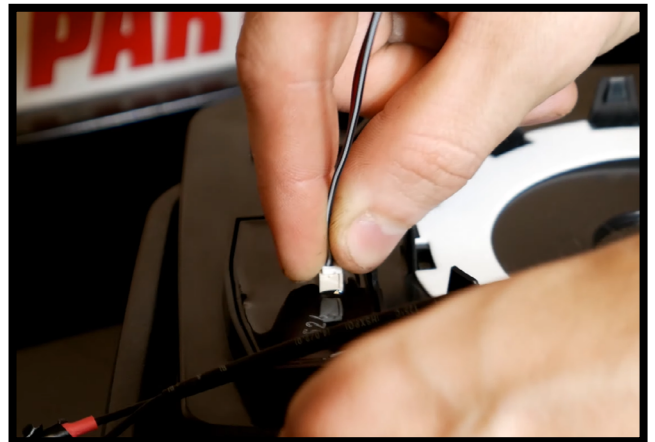


Disclaimer: The orientation and order of the defrost wires does not matter.



Step 2:

Plug in the signal on glass connector into the terminal on the backing.



Installing Upper Glass



OEM Tow Mirrors



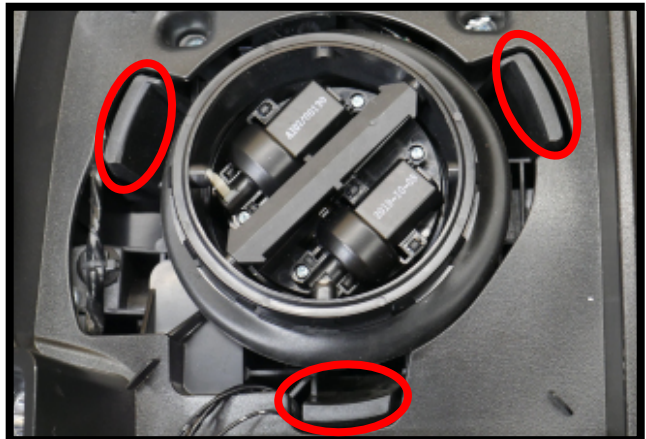
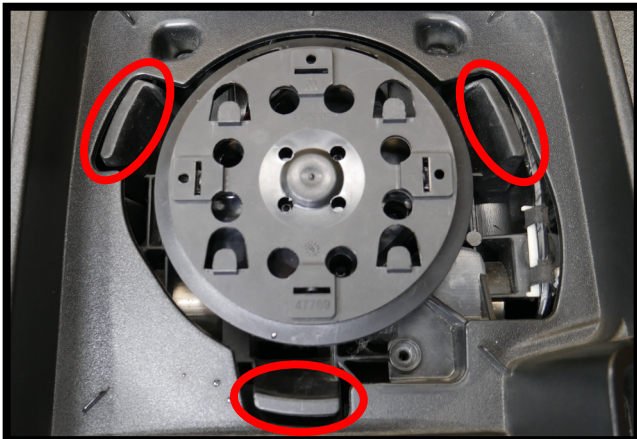
Aftermarket Tow Mirrors

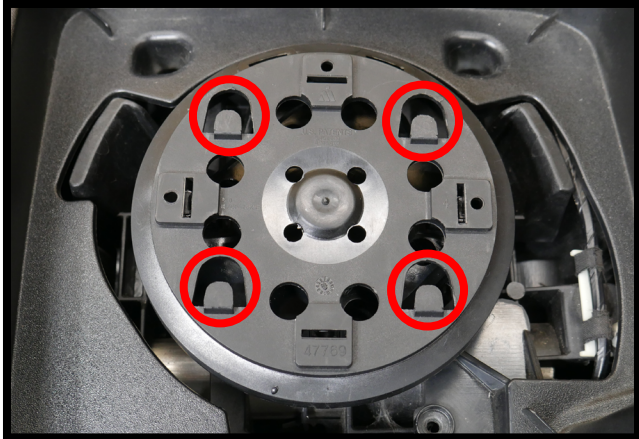


Disclaimer: All stabilization pins must slide on the inside of the 3 guides as shown.

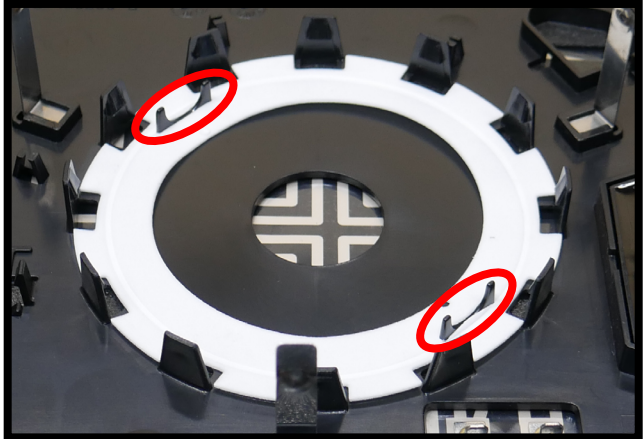


Disclaimer: All stabilization pins must slide on the inside of the 3 guides as shown.





OEM Tow Mirrors



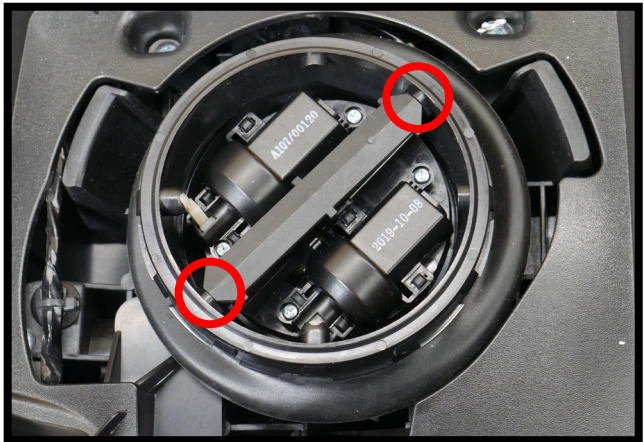
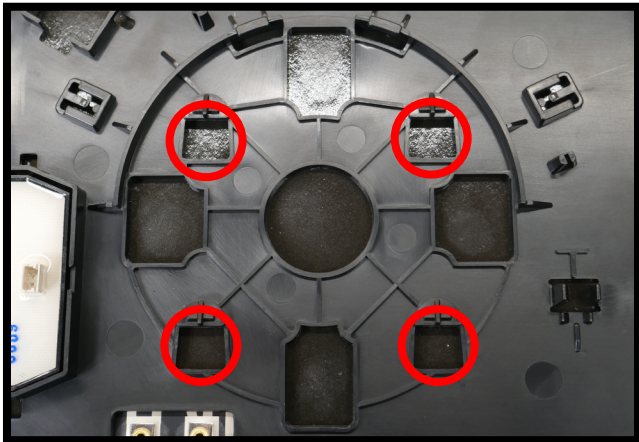
Aftermarket Tow Mirrors

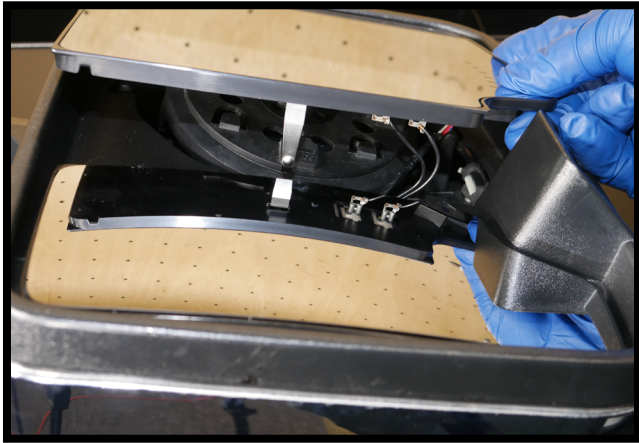
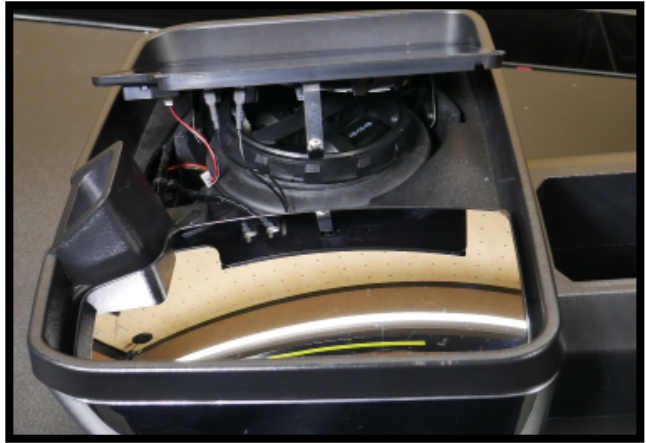


Disclaimer: The tabs on the motor mount must be aligned with the slots on the back of your upper glass.



Disclaimer: If your backing is equipped with these U-shaped guides, the guides (above) must line up with the circled portions of the alignment bracket (below) on your motor.

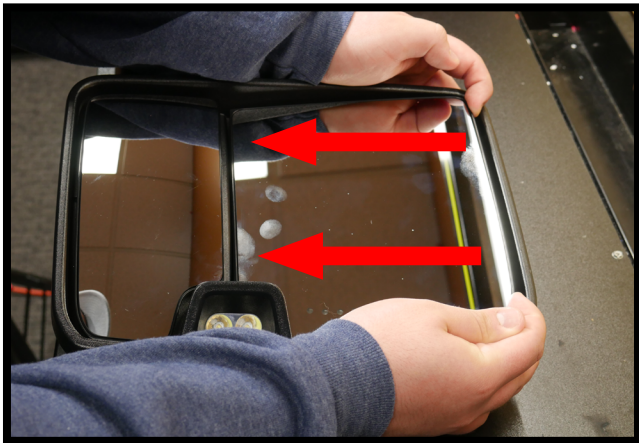



OEM Tow Mirrors

Aftermarket Tow Mirrors
Step 1:

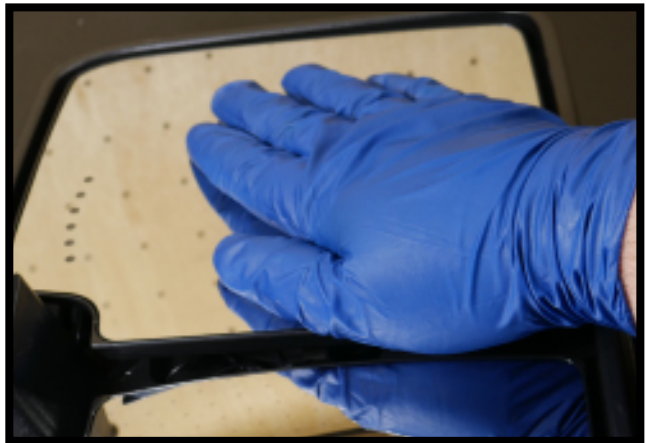
Tuck the signal on glass and defrost wires away from the center of the mirror. Line up the 3 stabilization pins with the 3 guides on the mirror.

Step 1:

Tuck away signal on glass and defrost wires away from the center of the mirror (if equipped). Line up the 3 stabilization pins with the 3 guides on the mirror.


Step 2:

With the mount tabs and slots aligned, place your fingers on the top of the glass and push down toward the bottom of the mirror to slot the glass into place.


Step 2:

Press on center of the upper glass with your palm to snap it in.

Your 2015 Style Upper Glass Install is Complete!



If you experience any difficulties or complications during your install, feel free to reach out to our Technical Support Team.

support@boostautoparts.com
765-831-2830