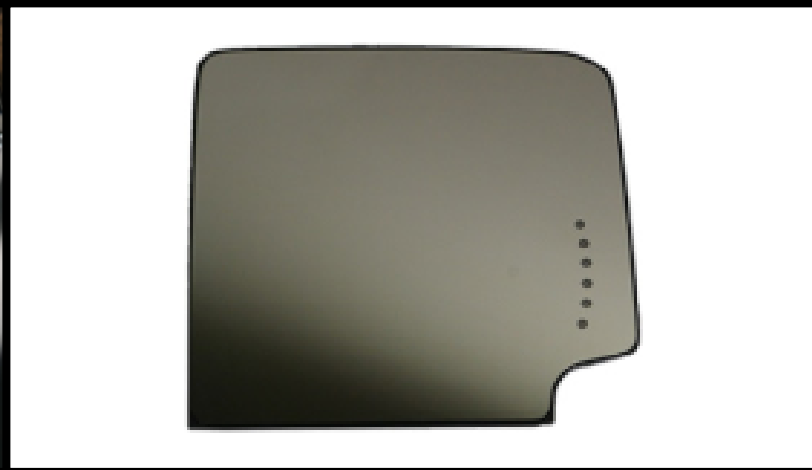


BOOST AUTO PARTS

**2015 Style Tow Mirror Upper Glass
Installation with 4.5" Backing**





4.5" Aftermarket Tow Mirror Upper Glass Installation

Introduction

This document will be covering the installation of 4.5" [2015 Style GM Tow Mirror Upper Glass](#). This install will take less than 5 minutes per side and only requires basic hand tools.

Boost Auto Parts offers other parts and accessories for 2015 Style Tow Mirrors. To purchase additional Tow Mirror parts and accessories [Click Here](#).

TABLE OF CONTENTS

Overview:	Pg.3
Kit Contents:	Pg.3
Removing Upper Glass:	Pg.4
Connecting Signal on Glass and Defrost:	Pg.10
Stabilization Pin Installation:	Pg.11
Upper Glass Installation:	Pg.13

How to Remove and Replace 4.5" Upper Glass on 2015 Style Aftermarket GM Tow Mirrors

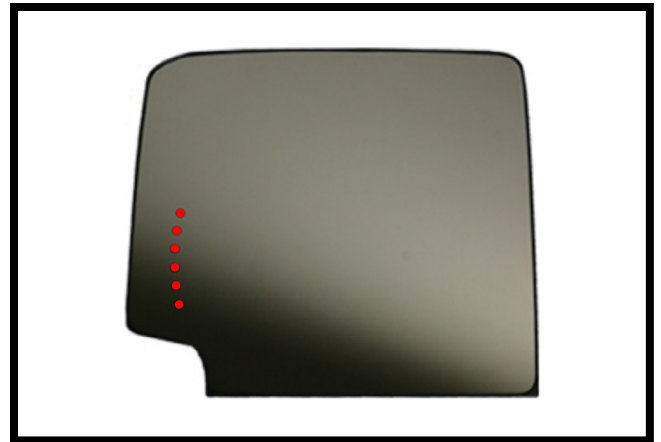
For Aftermarket Mirrors with 4.5" Backing

Difficulty: Easy

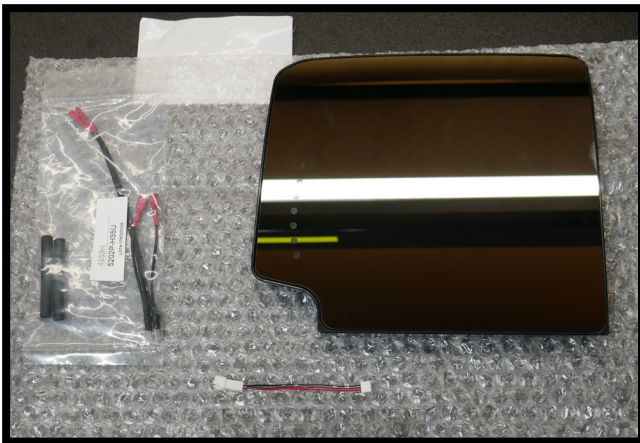
Tools Needed: Heat gun

Parts Needed: [GM Tow Mirror Upper Glass \(2015 Style\)](#)

Video Tutorial: [Remove or Replace Aftermarket Tow Mirror Glass](#)



Kit Contents



***Signal on Glass and Defrost will only come with the glass if optioned**



Caution:

Safety glasses and gloves should be worn while performing this procedure!

Step 1:

Angle the upper glass up as far as it goes.



Step 2:

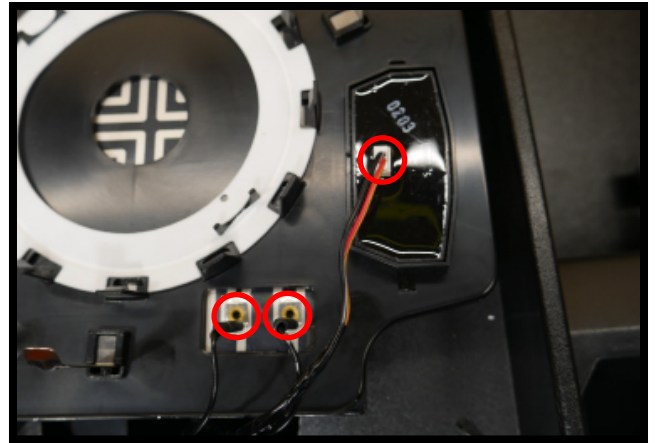
Remove upper glass by placing hands on the bottom of the upper glass and prying up and away from the mirror.



Step 3:

Remove the signal on glass and defrost connections from the upper glass.

If your glass does not have signal on glass and defrost, refer to [Pg.11](#) for further instruction.



Tow Mirrors Not From Boost Auto Parts

If your mirrors are **not** from Boost Auto Parts, refer to the steps below for further instruction.



Tow Mirrors From Boost Auto Parts

If your mirrors are from Boost Auto Parts, your signal on glass and defrost connections are plug and play. Refer to [Pg.10](#) for further instruction.



Disclaimer: If your mirrors are not from Boost Auto Parts, you will receive these 2 adapters (the option "Not Boost Auto" must have been selected for these adapters to be included). The adapter on the left will be used for defrost, and the adapter on the right will be used for signal on glass.

Tow Mirrors Not From Boost Auto Parts

Step 1:

Slide the heat shrink over the existing defrost wires.



Step 2:

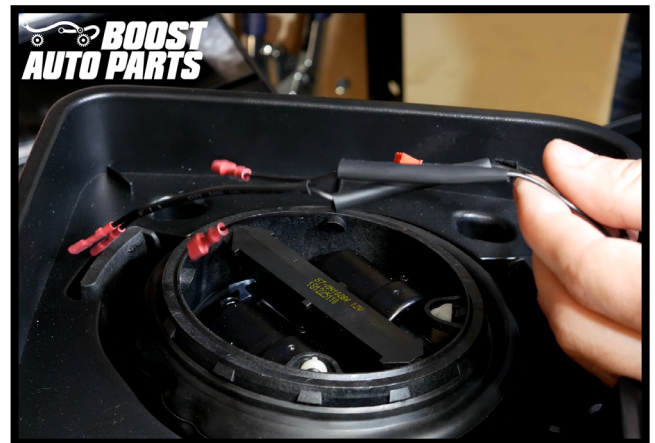
Connect the male terminals from the included adapter into the existing defrost female terminals.



Disclaimer: The orientation and order of the defrost wires does not matter.

**Step 3:**

Slide the heat shrink over the connection.



Step 4:

Use a heat gun to secure the heat shrink around the connection.



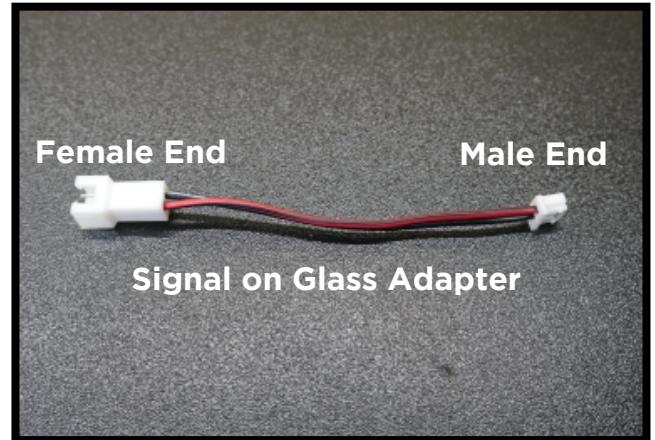
Step 5:

If your lower glass is not equipped with defrost, tape off the heated lower glass adapter connections. If your lower glass is equipped with defrost, connect the wires to the terminals on the lower glass.

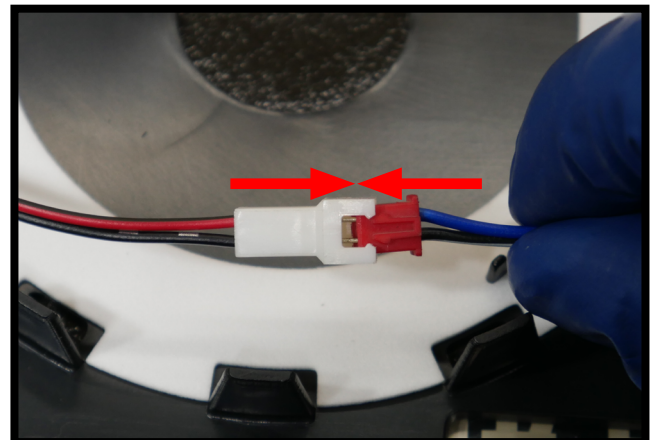




Disclaimer: The preexisting signal on glass wire on your mirror will connect to the female end of included adapter. The male end of the adapter will connect to the light on the back of your upper glass.

**Step 6:**

Plug the existing signal on glass wire into the female end of the signal on glass adapter.



Disclaimer: If the signal on glass connector on your mirror does not plug into the provided adapter, you will need to splice the adapter into the signal on glass wires in your mirror. The red wire will splice to the signal on glass power wire in your mirror, and the black wire will splice to the signal on glass ground wire in your mirror. Be sure to verify the signal on glass power and ground on your mirror as wire colors vary.

Connecting Signal on Glass and Defrost

Step 1:

Install the defrost wires onto the backing.

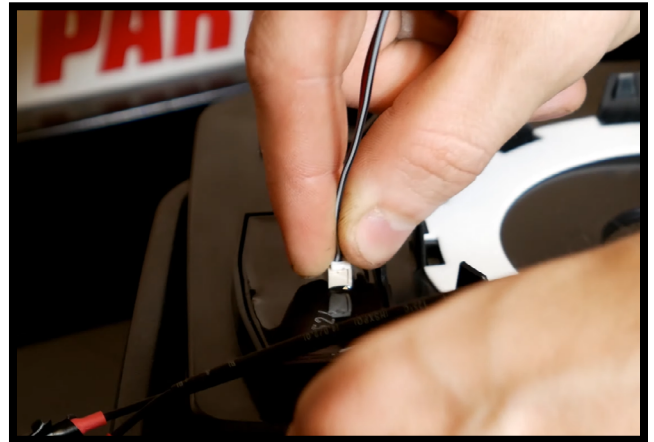


Disclaimer: The orientation and order of the defrost wires does not matter.



Step 2:

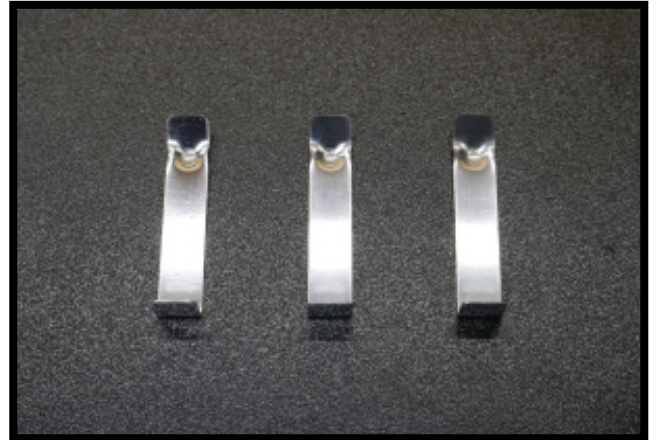
Plug in the signal on glass connector into the terminal on the backing.



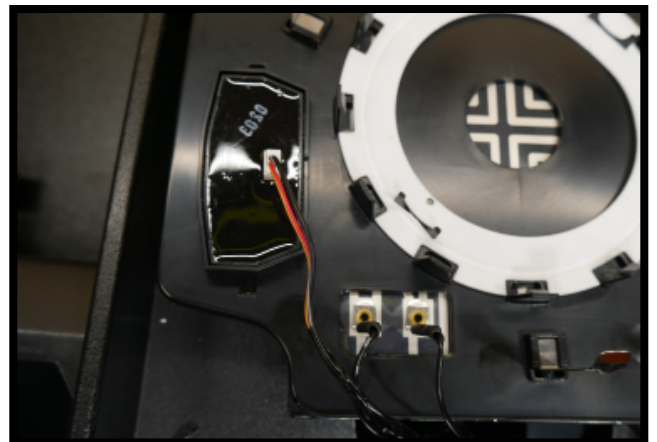
Installing Stabilization Pins



Disclaimer: You may reuse your original stabilization pins, but we recommend replacing them, as they become brittle over time.

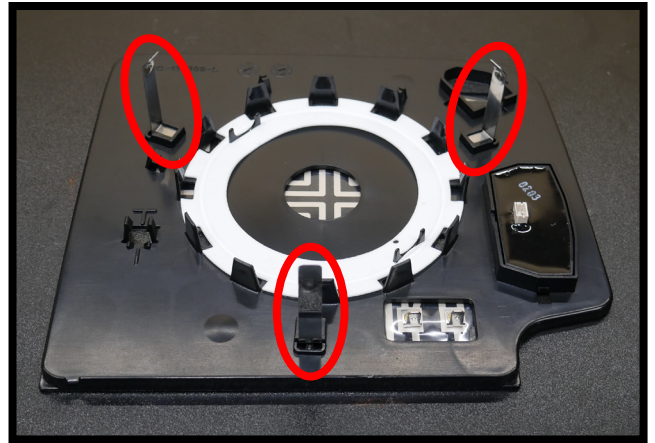


Disclaimer: You must install stabilization pins regardless of what features you have.



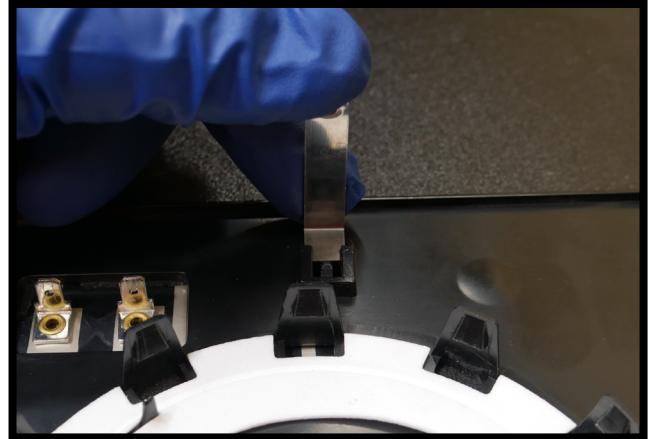
Step 1:

If you are using your old pins, slide the old pins out of your old upper glass.



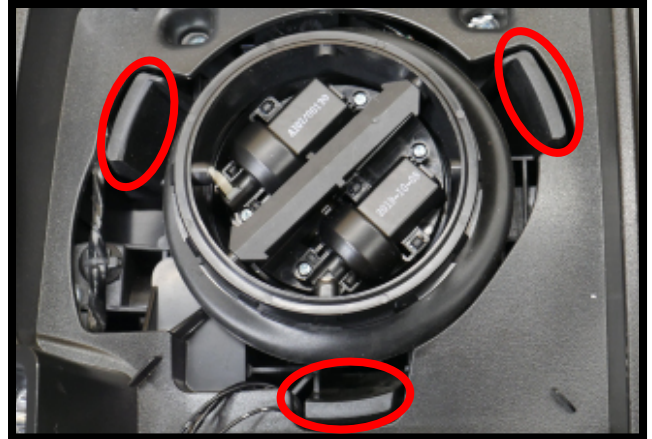
Step 2:

If you purchased new pins, or are using the old ones, slide the pins into the 3 slots on your new upper glass.





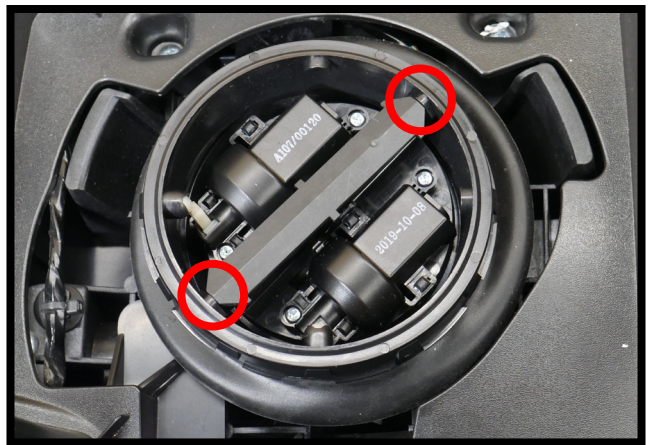
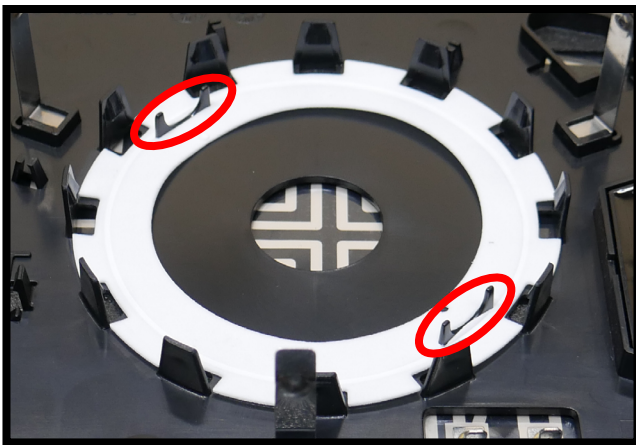
Disclaimer: Regardless of your features, all stabilization pins must slide on the inside of the 3 guides as shown.



Installing Upper Glass

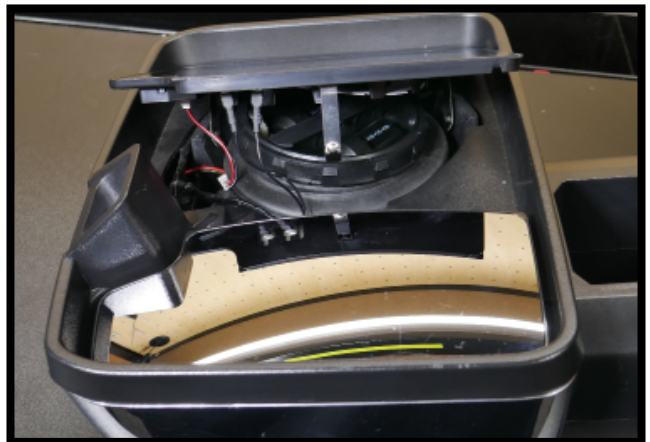


Disclaimer: The U-shaped guides on the backside of your upper glass (Left) must line up with the circled portions of the alignment bracket (Right) on your motor.



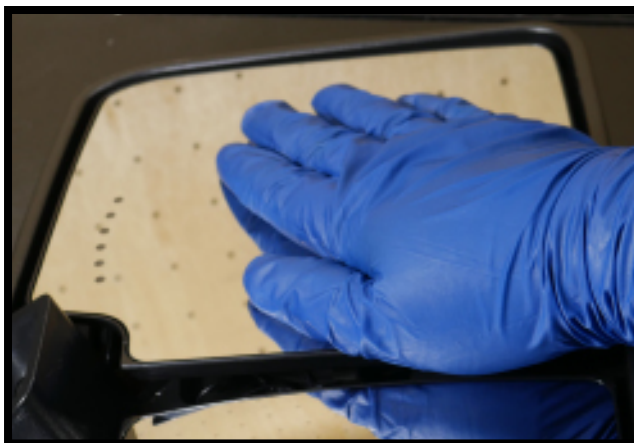
Step 1:

Tuck away signal on glass and defrost wires away from the center of the mirror (if equipped). Line up the 3 stabilization pins with the 3 guides on the mirror.



Step 2:

Press on center of the upper glass with your palm to snap it in.



Your 2015 Style Upper Glass Install is Complete!



If you experience any difficulties or complications during your install, feel free to reach out to our Technical Support Team.

**support@boostautoparts.com
765-831-2830**