

BOOST AUTO PARTS

**2019+ GM Tow Mirror Signal on
Glass Upgrade Kit Installation**





2019+ GM Tow Mirror Signal on Glass Upgrade Kit

INTRODUCTION

This document will be covering the installation of [GM Tow Mirror Signal on Glass Upgrade Kit](#). This install will take 15 minutes per side and only requires basic hand tools.

This kit adds an integrated red turn signal to your upper mirror glass for added safety and visibility. Installation will only take minutes with our included wiring adapter making this a fully plug and play upgrade kit.

Boost Auto Parts offers other parts and accessories for 2019+ New Body Style GM Trucks. To purchase additional parts and accessories for your truck [Click Here](#).

TABLE OF CONTENTS

Overview	Pg.3
Removing Upper and Lower Glass	Pg.4
Harness Installation	Pg.9
U-Shaped Guide Removal	Pg.22
Installing Stabilization Pins	Pg.23
Mounting Upper and Lower Glass	Pg.26

How to Install Signal on Glass Tow Mirror on 2019+ Silverado and Sierra GM Trucks

For OEM Tow Mirrors

Difficulty: Easy

Tools Needed: A T15 socket or bit, an impact driver or ratchet

Parts Needed: [GM Tow Mirror Signal on Glass Upgrade Kit](#)

Video Tutorial: [GM Tow Mirror Signal on Glass Upgrade Kit Install](#)



Caution:

Safety glasses should be worn while performing this procedure!

Removing Upper and Lower Glass

Step 1:

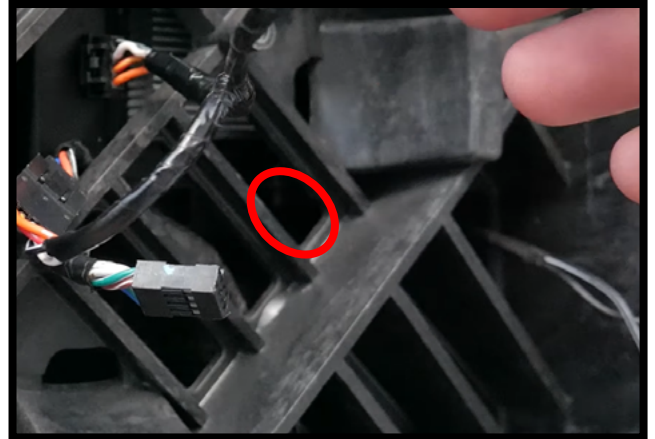
Angle the upper and lower glass down as far as they go. Snap the lower glass off by placing fingers behind the lower glass and pulling away from the mirror.



Step 2:

If you previously purchased the Boost Auto Parts heated lower glass kit, disconnect the defrost terminals.

If you do not have this upgrade kit installed, this would be a good time to do so, as you will be removing the upper and lower glass. Purchase our heated lower glass upgrade kit [here](#).



Step 3:

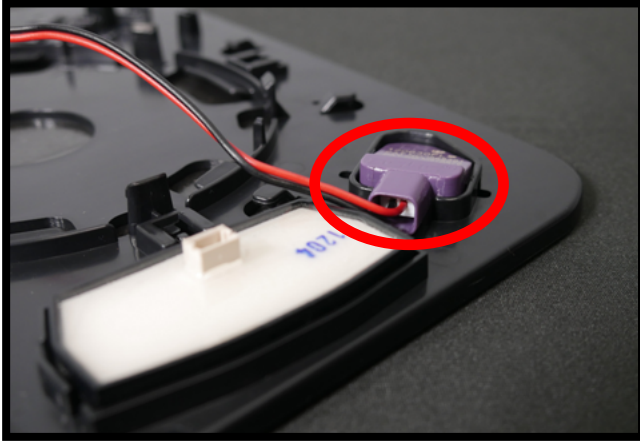
Angle the upper glass all the way up. Then reach behind it and snap off the glass by applying even pressure and pulling it away from the mirror.

**Step 4:**

Disconnect the wires for the upper defrost.

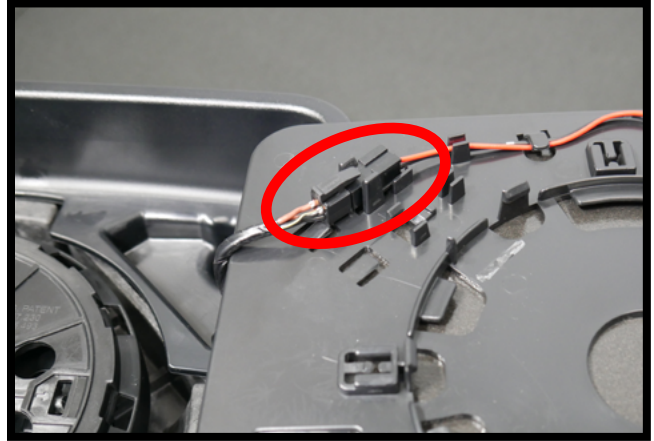


Step 5: This step has two different variations based on what options your vehicle is equipped with.



Mirrors With Blind Spot Only

If your mirrors are only equipped with blind spot monitoring, Remove the two pin the connector into the back of the blind spot indicator.



Mirrors With Auto Dim

If your mirrors are equipped with auto dim, disconnect the harness to the four pin connector on the backside of the upper glass.

**Disclaimer:**

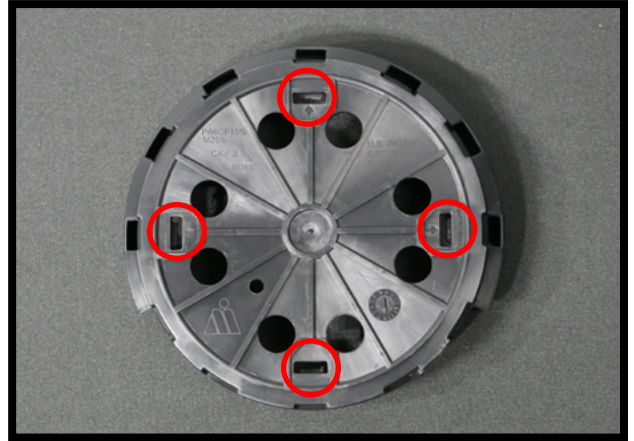
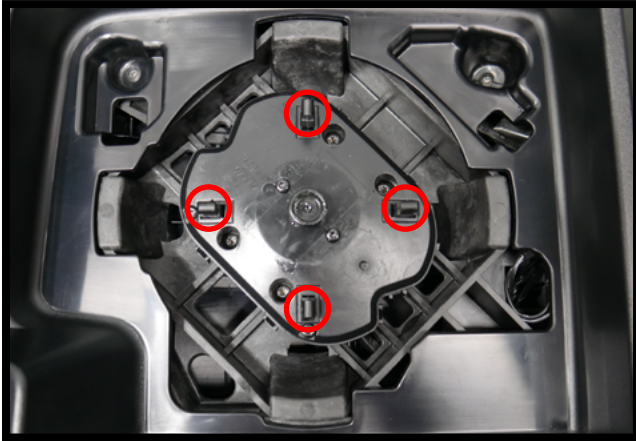
If the back of your upper glass looks like this, you have snapped the mount off of the motor, refer to the steps below for further instruction.

If your upper glass does not look like this refer to [Pg.9](#) for further instruction.

**Step 1:**

Use a flat head screwdriver to remove the mount from the back of the glass. Do not discard the mount.



**Step 2:**

Line up the tabs on the mount to the tabs on the motor (shown above). Make sure the text is oriented in the correct direction to ensure proper motor function.

Using your palm, press down evenly on the center of the mount to snap it into place.

Once the center of the mount is snapped in, press on each tab to make sure the mount is fully secured.



Signal on Glass Harness Installation

Step 1:

Remove the four T15 screws that hold the shroud in place.



Step 2:

Pull the shroud away from the mirror housing. The lower cap is now loose, so be sure to hold onto the lower cap while doing so.

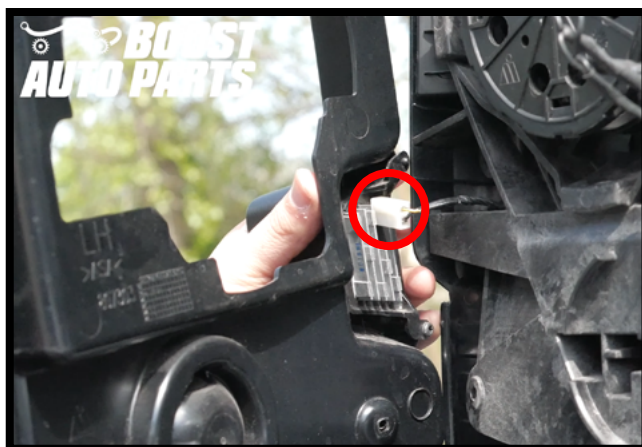


Step 3:

Remove the lower cap from the mirror.

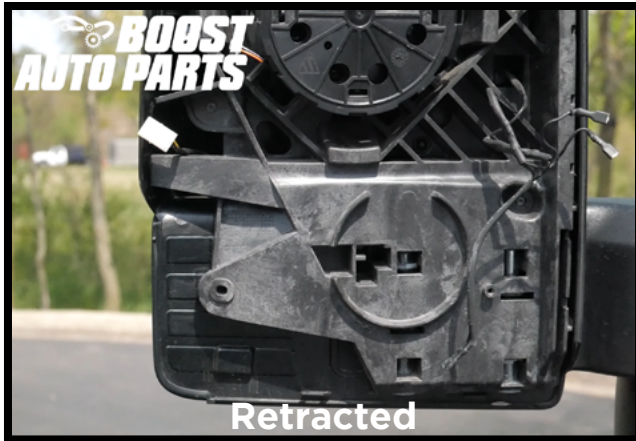
**Step 4:**

Unplug the rear facing cargo light (if equipped) and remove the shroud.

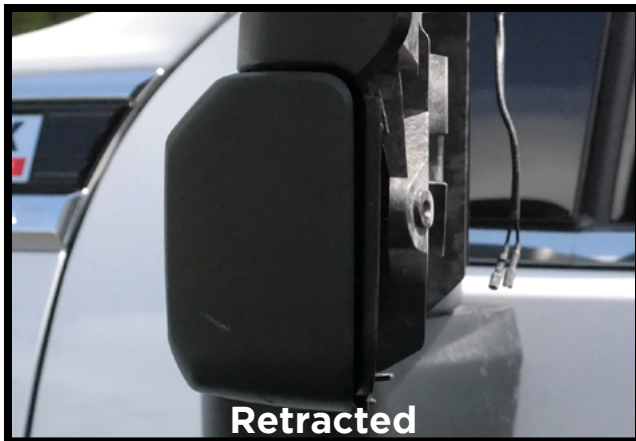


Step 5:

Extend the mirror out half-way.

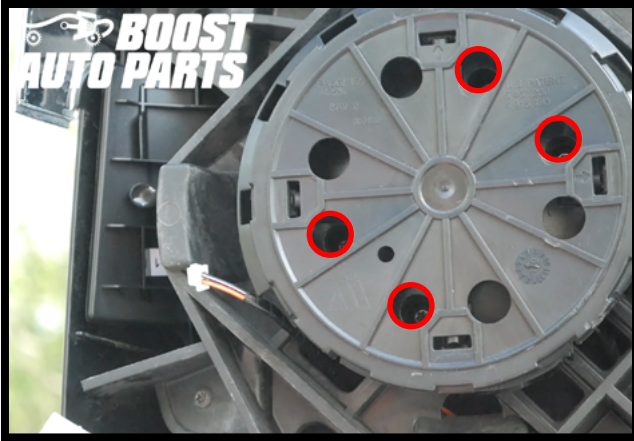
**Note:**

Here is what the mirror should look like from the side. The mirror will slide forward slightly when extended



Step 6:

Using a T15 bit or socket remove the four screws retaining the motor. If needed, tilt the motor towards the screw to gain better access to each screw as shown below.

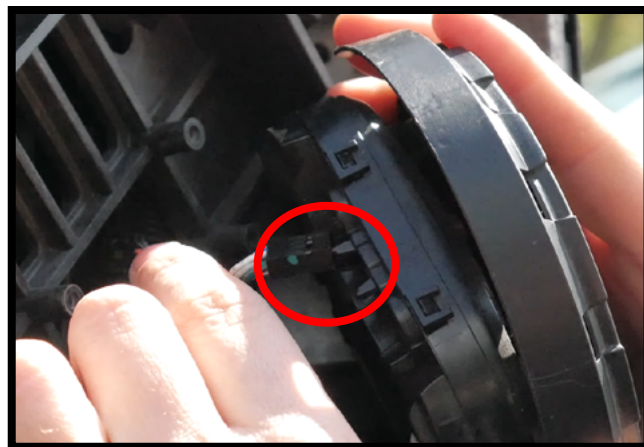
**Step 7:**

Pull the motor away from the mirror housing to access the connector on the back side.



Step 8:

Unplug the connector and remove the motor.

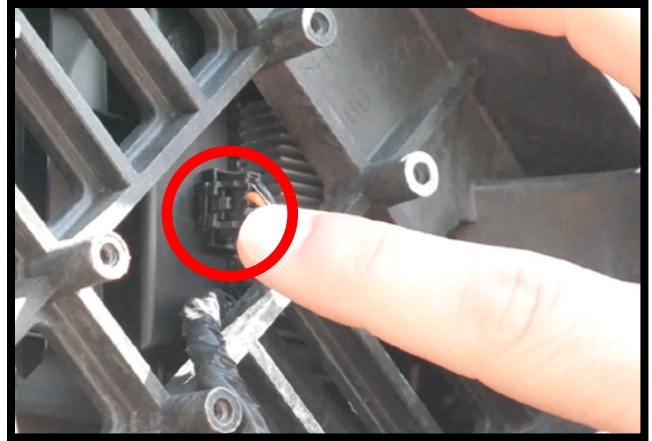
**Step 9:**

Remove the two additional T15 screws.

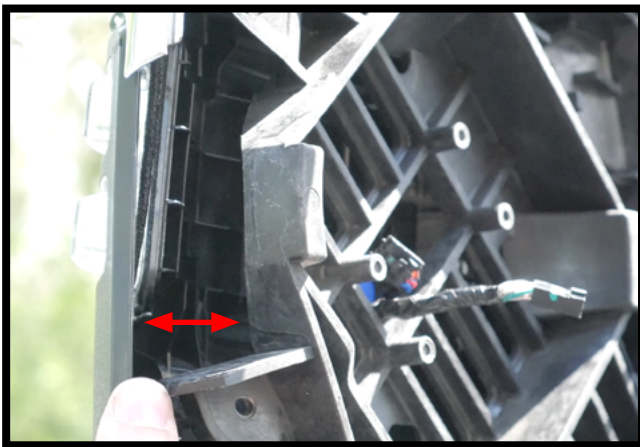


Step 10:

Depress the latch on the front marker light connector and unplug it from the marker light.

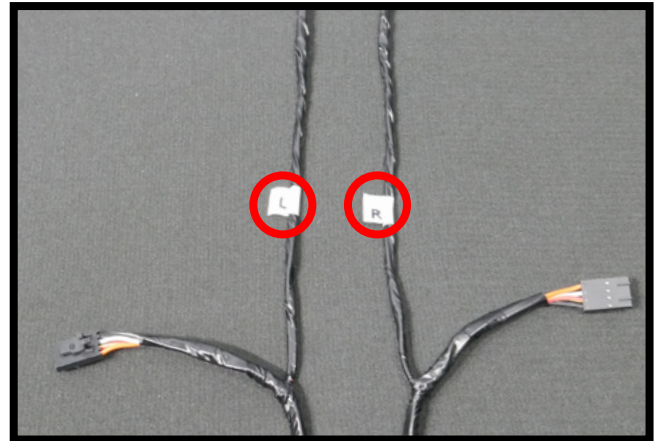
**Step 11:**

Separate the front and rear shroud by pulling them away from each other.

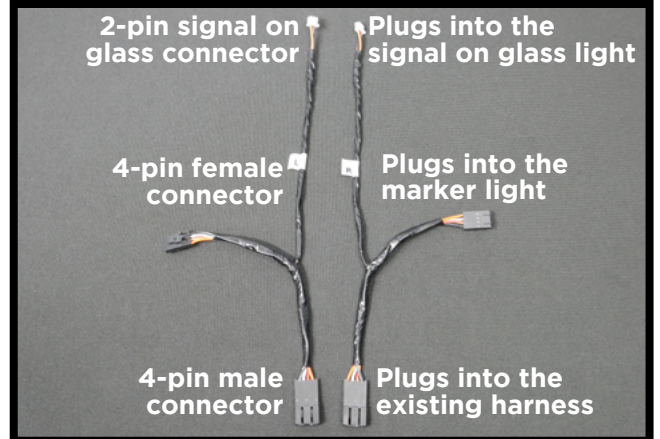


**Disclaimer:**

The harnesses are labeled “L” for Left hand side and “R” for Right hand side. Install the Left side harness on the driver side and the Right side harness on the passenger side.

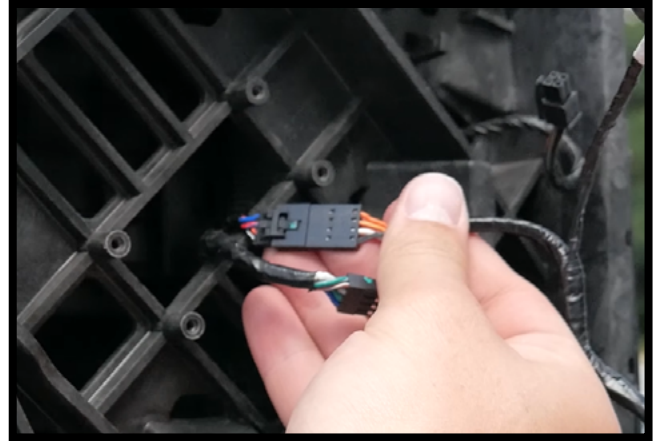
**Note:**

Take note of the 3 connectors on the harness provided by Boost Auto Parts.

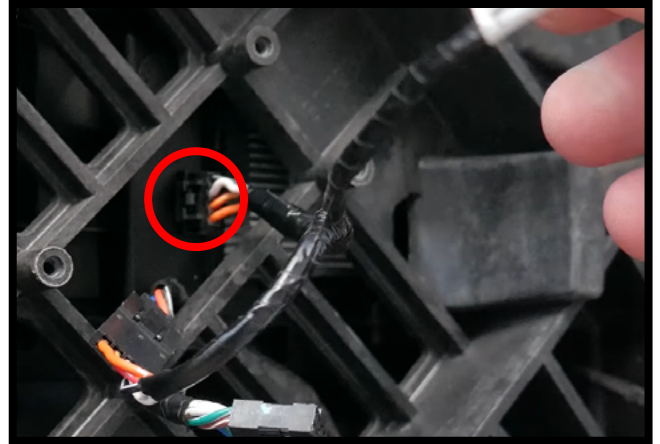


Step 12:

Plug the male 4 pin connector into the front marker light wiring harness.

**Step 13:**

Plug the female 4 pin connector into the back of the marker light.

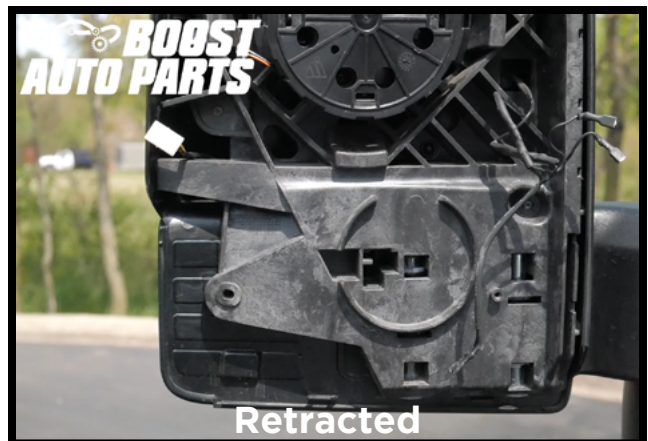


Step 14:

Route the 2 pin signal on glass connector in between the rear shroud and the mirror housing. The connector should come through this portion of the mirror.

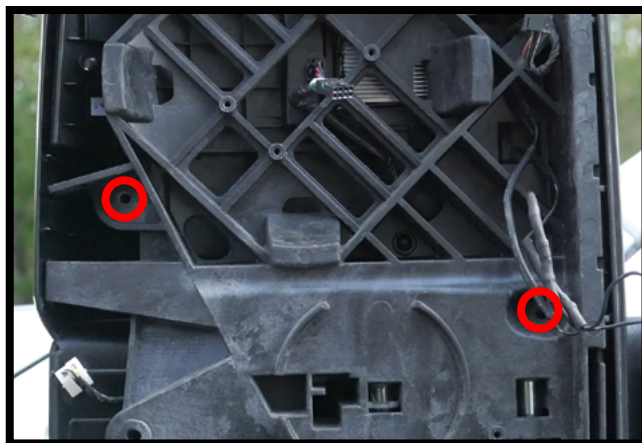
**Step 15:**

Retract the mirror all the way in.



Step 16:

Reinstall the two T15 screws.

**Step 17:**

To snap the lower cap back into position, line up the lip on the lower cap to the lip that rides in the channel in the mirror.



Step 18:

Once the lower cap is in position, slide the cap up. Be sure to hold the lower cap in place while installing the front shroud.

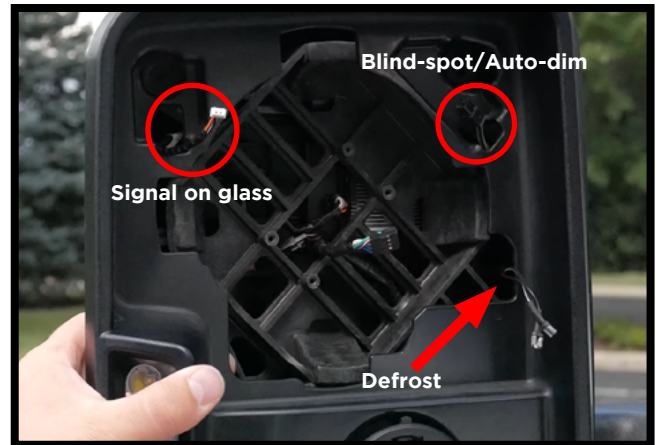
**Step 19:**

Plug the connector back into the cargo light (if equipped). Make sure the wiring harness for the cargo light is not pinched during this process.

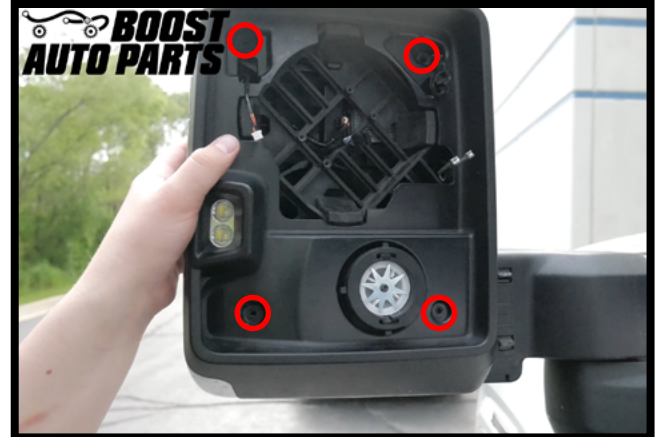


Step 20:

Route the wires for auto dim and blind spot monitoring (if equipped), signal on glass, and defrost through their respective openings on the front shroud. Making sure none of the wires are pinched during this process.

**Step 21:**

Line up the front shroud and reinstall the four T15 screws.



Step 22:

Plug the power adjust motor back in, the connector is key grooved and can only be plugged in one way.

**Step 23:**

Line up the screw bosses and reinstall the four T15 screws that hold the power adjust motor into place.

**Disclaimer:**

Be careful not to pinch the harness behind the motor and make sure the text is oriented in the correct direction to ensure proper motor function.



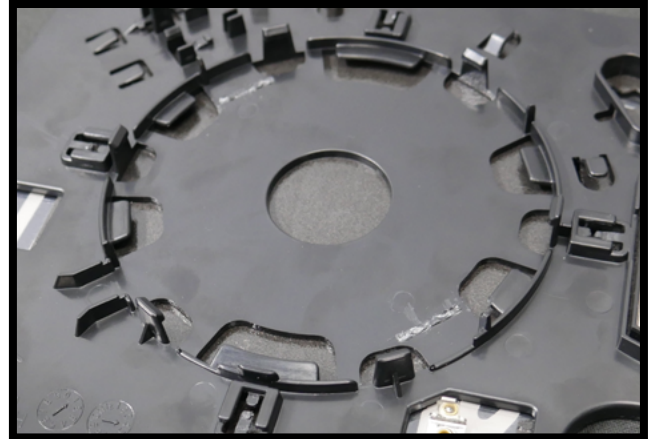
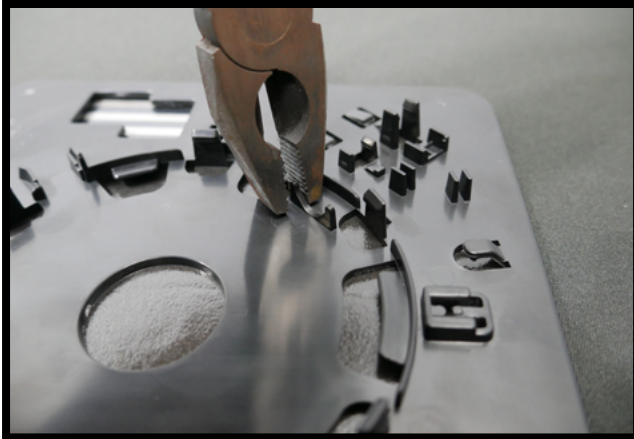
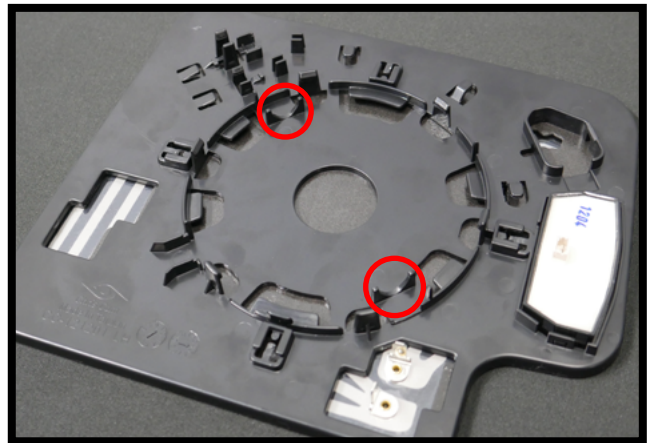
U-Shaped Guide Removal

Step 1:

If the back of your Boost Auto Parts upper glass comes with u-shaped guides, they must be removed prior to installation.

Use a pair of pliers to twist off and remove the u-shaped guides.

If your glass does not have the u-shaped guides, skip this step.



**Disclaimer:**

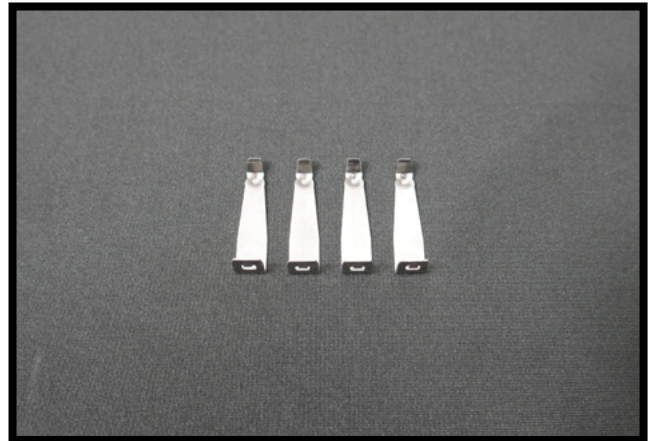
You may also use sandpaper or a dremel to make the surfaces flat. We recommend making the u-shaped guides as flat as possible, as this may cause issues if not done so.



Installing Stabilization Pins

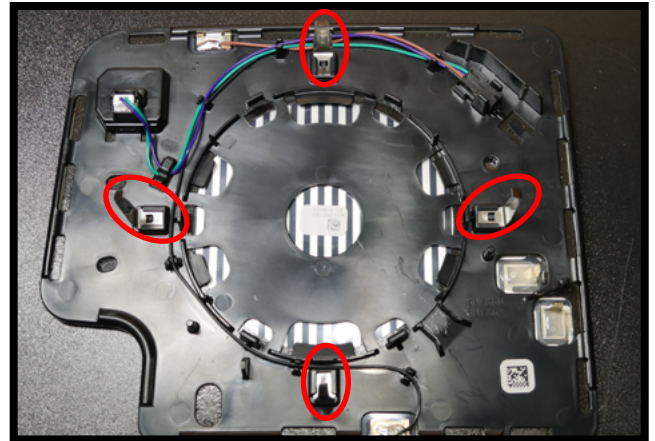
**Disclaimer:**

You may reuse your original stabilization pins, but we do recommend replacing the stabilization pins. These pins become brittle over time.

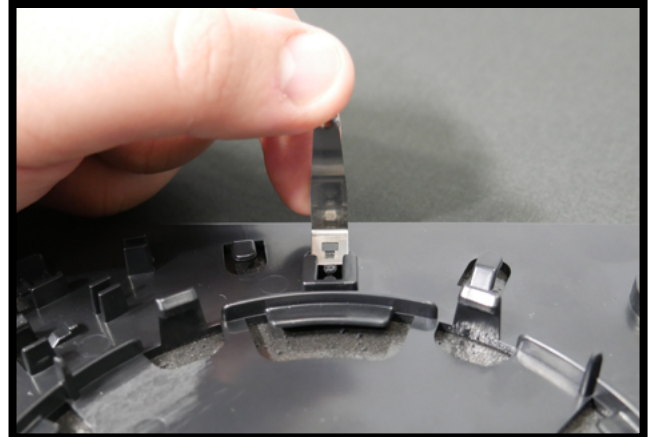


Step 1:

If you plan to reuse your pins, you will need to remove the 4 pins from your upper glass. If you have new pins skip to the next step.

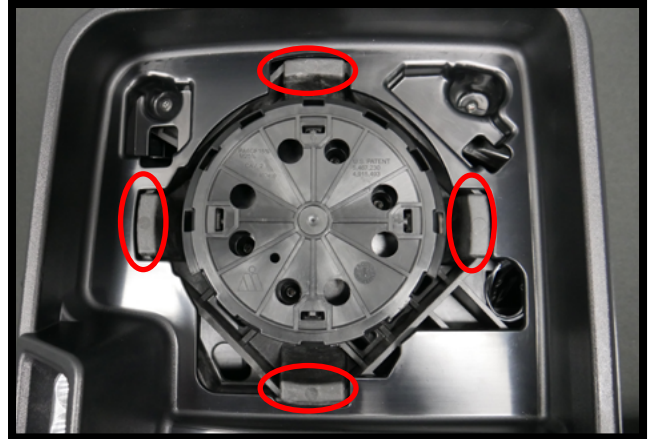
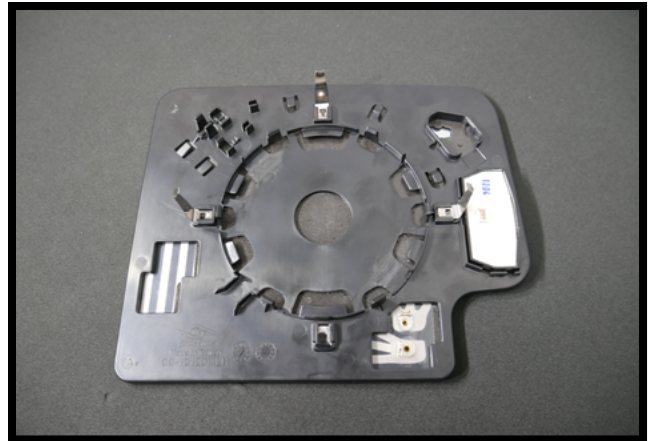
**Step 2:**

To attach pins, slide the flat square ends into the slot on your new upper glass as shown here. All four pins will need to be installed before moving on.



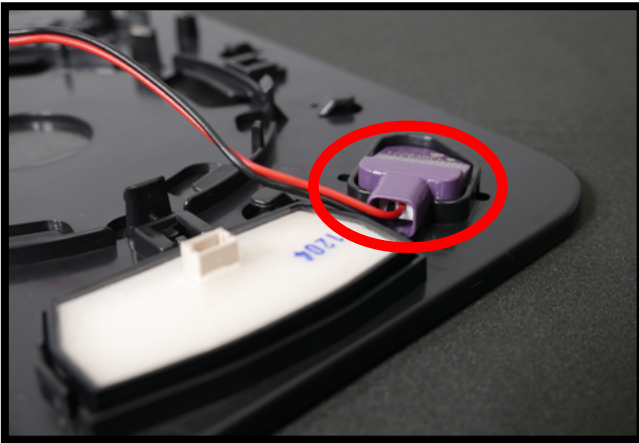
**Disclaimer:**

All four stabilization pins must slide on the inside of the guides as shown.



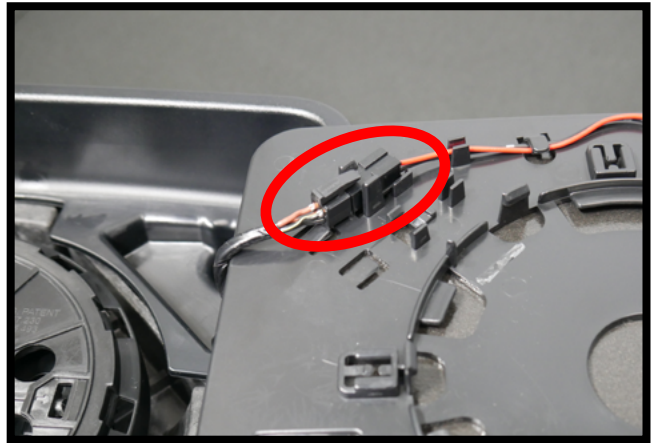
Installing Upper Glass and Lower Glass

Step 1: This step has two different variations based on what options your vehicle is equipped with.



Mirrors With Blind Spot Only

If your mirrors are only equipped with blind spot monitoring, install the two pin the connector into the back of the blind spot indicator.

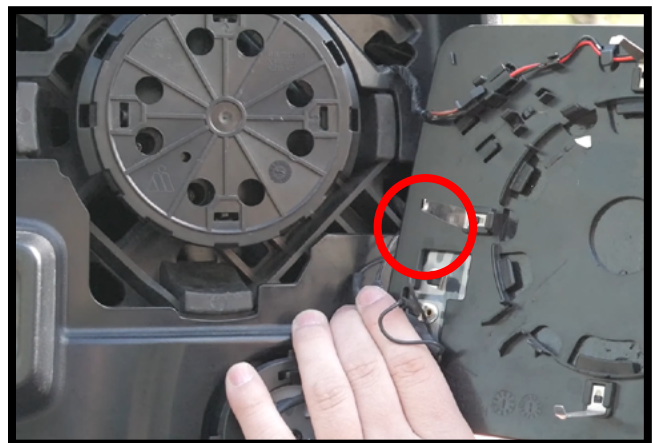


Mirrors With Auto Dim

If your mirrors are equipped with auto dim, reconnect the harness to the four pin connector on the backside of the upper glass.

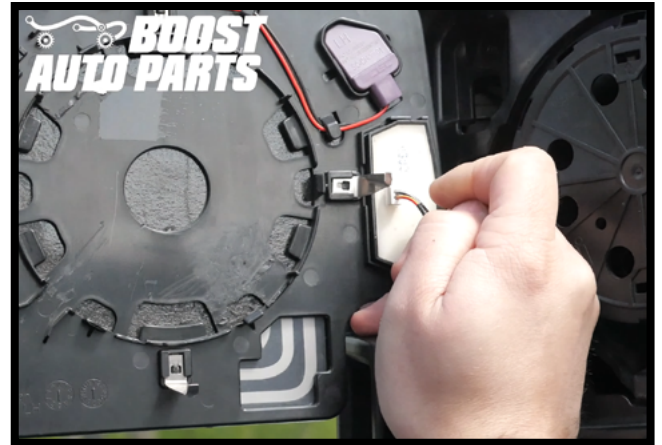
Step 2:

Connect the defrost wires to the terminals on the back of the upper glass.



Step 3:

Plug the signal connector into the light on the back of the upper glass.

**Step 4:**

Be sure to tuck in any wires, then align the stabilization pins and use your hand to snap the upper glass into place.



Step 5:

If you have the Boost Auto Parts heated lower glass kit, plug in the defrost wires on the lower glass.

**Step 6:**

Line the up the lower mount to the back of the lower glass. Use the palm of your hand to snap in the lower glass.



Your GM Tow Mirror Signal on Glass Upgrade Kit Install is Complete!



If you experience any difficulties or complications during your install, feel free to reach out to our Technical Support Team.

support@boostautoparts.com
765-831-2830