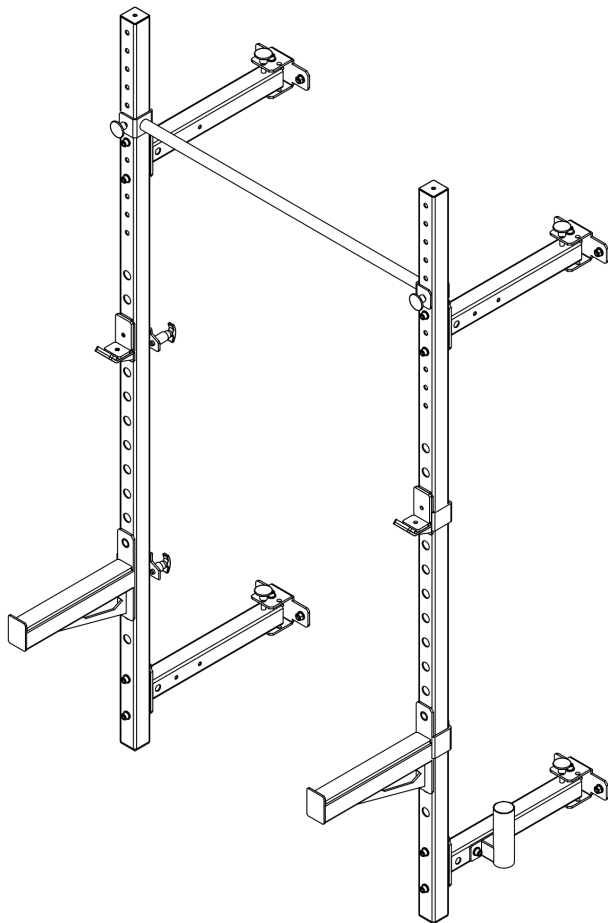
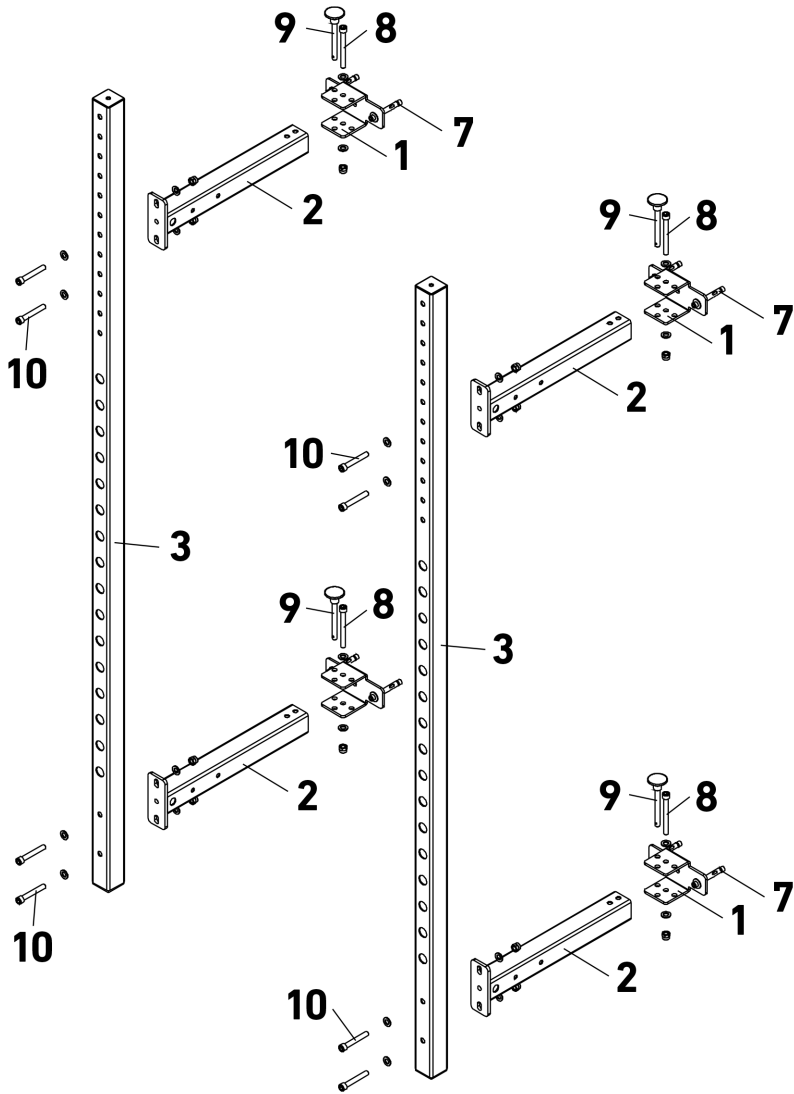


WALL MOUNTED FOLDING RIG XF-Wall



SMAI™

WALL MOUNTED FOLDING RIG



| PART NUMBER | DESCRIPTION | QUANTITY |
|--------------------|--|-----------------|
| 1 | HOLDER | 4 |
| 2 | SUPPORT TUBE | 4 |
| 3 | UPRIGHT TUBE | 2 |
| 4 | CHIN-UP BAR | 1 |
| 5 | PIN (SHORT) | 2 |
| 6 | J HOOKS | 1 PAIR |
| 7 | EXPANSION SCREW | 8 |
| 8 | HEXAGON SOCKET CAP BOLT M12*110 + TWO WASHERS 12 + LOCK NUT M12 | 4 |
| 9 | PIN | 4 |
| 10 | HEXAGON SOCKET CAP BOLT M12*85 + TWO WASHERS 12 + LOCK NUT M10 | 8 |
| 11 | HEXAGON SOCKET CAP BOLT M10*80 + TWO WASHERS 10 + LOCK NUT M10 | 2 |
| 12 | BAR HOLDER | 1 |
| 13 | SAFETY HOLDER | 1 PAIR |
| 14 | FAST PIN | 4 |

WALL MOUNTED FOLDING RIG

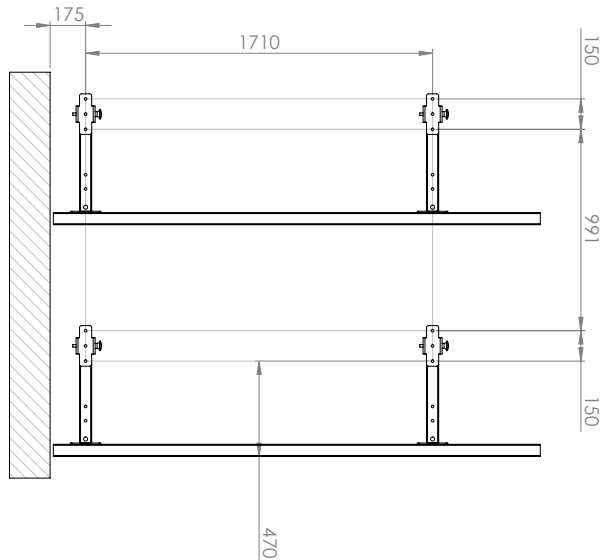
1
Remove all components from packaging. Check the parts list from the previous page to ensure all components are accounted for.

2
Take care to consider your installation space. Take note of the supplied installation dimensions. The rig will require an additional 500mm of space to the left and/or right of the mounting positions to allow the rig to fold down against the wall.

3
Mark out the drill positions as per the drawing. This must be as accurate as possible. Use of a spirit level, laser level or plumb bob is recommended to ensure the brackets are mounted precisely vertical. This is essential to ensure that rig assembles correctly and is able to swing freely.

4
Drill the mounting points using a 16mm masonry bit to a depth of 100mm.

5
Ensure to remove all debris from the hole using compressed air or a vacuum cleaner.



6
Attach the wall brackets **HOLDER (#1)** to the wall using the supplied **EXPANSION SCREW (#7)** anchor bolts..

7
Attach the **UPRIGHT TUBE (#3)** to the **SUPPORT TUBE (#2)** using the **HEXAGON SOCKET CAP BOLT M12*85 (#10)** bolts, M12 washers and M12 lock nut. The upper support tubes should be bolted to the 7th and 9th holes counting from the top of the upright to align with the wall brackets. Complete this assembly for all support tubes.

8
Lift the upright/support tube assembly into position

9

The locking **PIN (#9)** can be dropped in first to temporarily secure the uprights.

10

Remove one locking pin temporarily for access to install each **HEXAGON SOCKET CAP BOLT M12X110 (#8)** bolt to fully secure the assembly. Ensure to use the M12 washers and M12 lock nut. Complete this process for all 4 attachment points.

11

The upright assembly should rest on the floor and not on the mounting bracket in the assembled position. Test the operation of the assembly by removing the locking pin and swinging the assembly up against the wall. You will be required to lift the upright assembly slightly.

12

The rig accessories can now be assembled ready for use. Ensure the rig is locked in the extended position.

13

The **CHIN-UP BAR (#4)** can be locked in the desired position using the **PIN (SHORT) (#5)** locking pins.

14

The **J HOOKS (#6)** can be installed in the desired position. These install at a 90 degree angle before swinging down into position, locking in place with the spring-loaded locking pin.

15

The **SAFETY HOLDER (#13)** spotting arms can be installed in the desired position in a similar manner to the J hooks.

16

Finally, the **BAR HOLDER (#12)** can be installed to either of the lower swing arms. It is recommended that this is installed in such a way that it will not impact the wall when the rig is folded away in the desired direction. This requires the **HEXAGON SOCKET CAP BOLT M10*80 (#11)** bolts, M10 washers and M10 lock nuts.

17

Make sure to double check:

- a. All fasteners are tightened appropriately.
 - b. You have used washers where necessary, and;
 - c. There are no left over parts.
-

18

Job done!