

# WL-EZCG



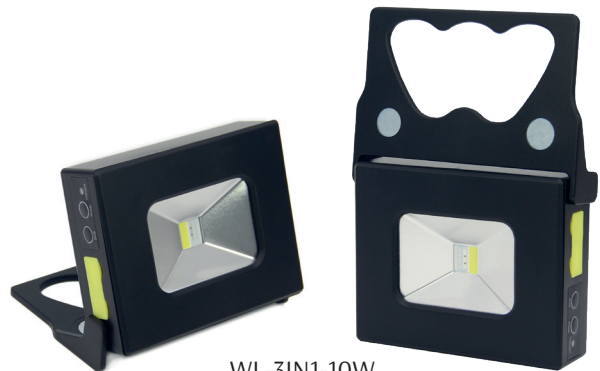
WL-EZCG-10W-50K

## TECHNICAL SPECIFICATIONS:

- :: Die-cast Aluminum (WL-EZCG), Polycarbonate (WL-3IN1)
- :: Toughened glass
- :: High power Epistar LED chip
- :: LED: COB technology with prismatic reflector and frosted lens
- :: Charge Plug & USB Cable Incl. with WL-EZCG
- :: USB Cable Incl. with WL-3IN1
- :: Input voltage: 5V DC
- :: Power Factor: >0.9
- :: 3.7V, 4000mAh Lithium Battery
- :: Charging Time: 5Hrs.
- :: Operating Temp: -4°F to 122°F
- :: Beam angle: 120°
- :: CRI: >80
- :: 70,000 hour rated life
- :: IP65, providing a reliable weather-tight seal
- :: 5-year warranty



WL-EZCG-SOLP



WL-3IN1-10W  
Work Light  
Power Bank  
SOS Light

## LED WORK LIGHTS

CATALOG NO.	DESCRIPTION	WATTS	LUMENS	COLOR TEMP
WL-EZCG-10W-50K	LED Portable Work Light	10W	600LM	5000K
WL-3IN1-10W	LED Mini Light	10W	400LM	6000K
WL-EZCG-SOLP	Optional Solar Panel for Portable Light	20W	1667LM	3000K