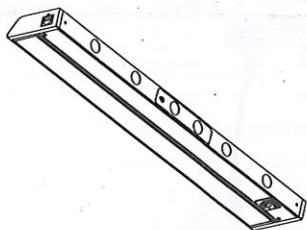
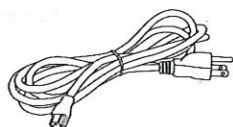


IMPORTANT : Please read these instructions before commencing installation and retain for future reference.

Components



1 X LED 3 Color Level Light



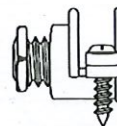
1 X 6' Power Cord



End-to-End Connector



Jumper Connector



Romex Connection Kit



2 x Screws



1 x Fitting Instructions

Important Safety Information

Please read these instructions carefully before attempting to install this product. It is advisable to keep these instructions in a safe place for further reference.

WARNING: These products may represent a possible shock or fire hazard if improperly installed or attached in any way. Products should be installed in accordance with these instructions, current electrical codes and/or the current National Electric Code (NEC).

WARNING: To avoid electrical shock, disconnect or disable power at the source prior to installation or maintenance.

WARNING: To avoid electrical shock, and to assure proper operation, this fixture must be adequately grounded.

WARNING: To avoid electrical shock, use only with 120V AC plug-in power supply or with 120V AC hardwire power supply.

Factory warranty will be void if used with a non-recommended power supply, transformer, or driver.

WARNING: To avoid electrical shock, and to assure proper operation, this fixture must be adequately grounded.

WARNING: 12-inch minimum spacing distance from luminaire required for all objects located under fixture.

WARNING: Linkable total wattage is 200 Watts.

Safety Instructions

1. The Westgate light is listed c/ETL/us and intended for indoor use in dry locations only. Do not use in the vicinity of standing water or liquids. Do not submerge in water or liquids.
2. Do not use if there is any damage to the unit or to the power cord's insulation. Inspect periodically.
3. Do not route cords or units through walls, doors, windows or any similar part of a building structure.
4. Do not secure unit or its power cord with staples, nails, or any other sharp objects that may damage the cords.
5. Please read and understand these instructions before beginning installation.

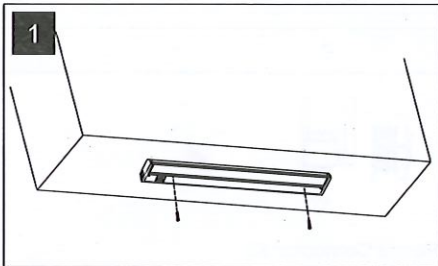
Maintenance & Care

1. Ensure that the power is disconnected prior to cleaning.
2. To keep the finish of this product, wipe over with soft cloth periodically.
3. Do not use harsh chemical solvents, it may dis-colour or damage the finish.

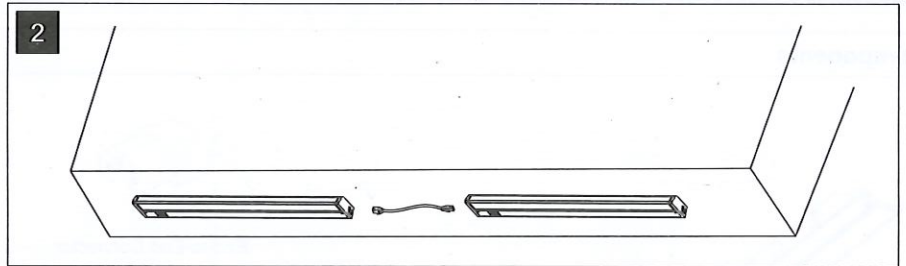
Preparation for Installation

1. Disconnect electrical power before installing or servicing any part of this fixture.
2. Place fixture on a clean flat surface.
3. Determine input power connection method (Plug-In, Hardwire).

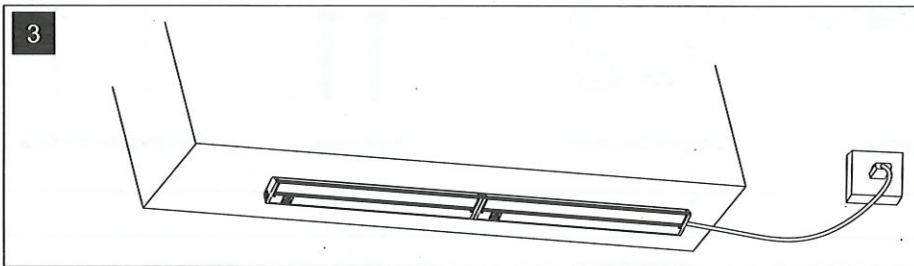
Plug-In Instructions



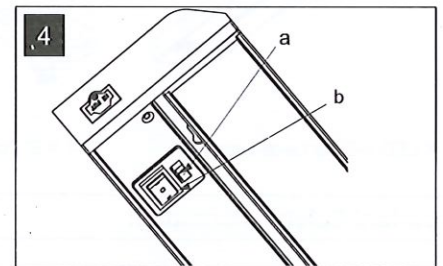
Fix the fixture to the unit using 2 fixing screws



Connect the multiple fixtures by snapping the End to End Connector or Jumper Connector.



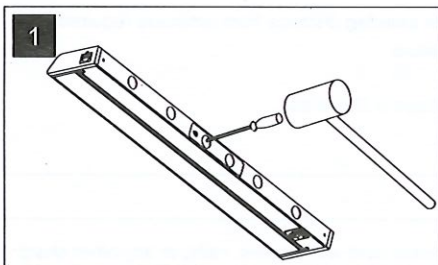
Finally wire the power cord to 120v mains supply.



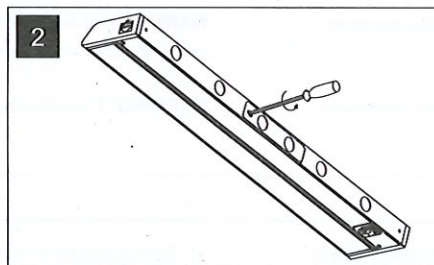
By flipping the switch (a) select between one of the 3 modes (Low, Off, Hi).

Switch (b) is used to change the color temperature of light delivered 2700K, 3000K & 4000K CCT respectively.

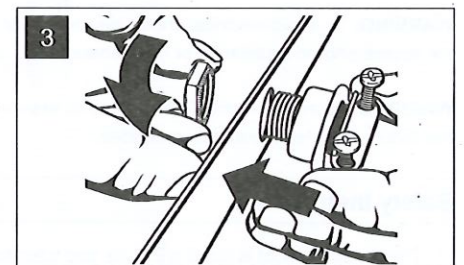
Hardwire Installation



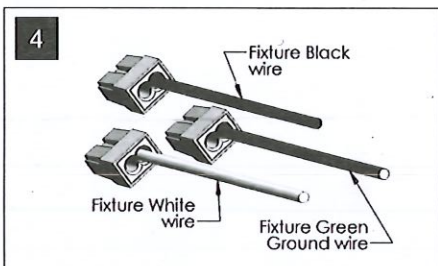
Remove the kock-out by hammering



Disengage adapter plate by loosening screw.

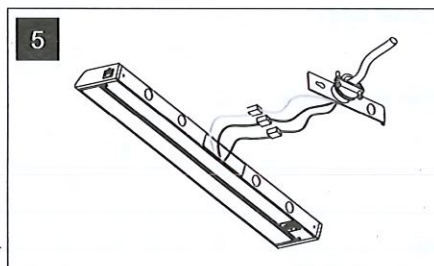


Insert romex connector into the housing open hole on the adapter plate. Secure it with the nut.



Pull 3 wires out of the fixture to allow connection to the branch circuit.

Inserting wires into the open hole in the push-in wire connector

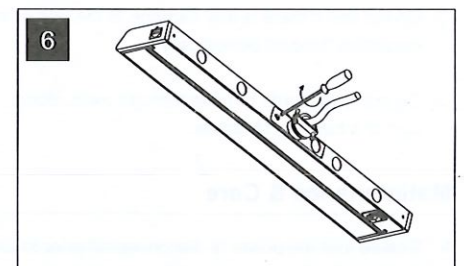


Connect the Green ground input supply wire to the fixture Green ground wire.

Connect the White input supply wire to the fixture White wire.

Connect the Black input supply wire to the fixture Black wire.

****Do not mix wires or change polarity.**



Feed wires back into fixture, reattach adapter plate tighten screw, and attach the fixture to the base of the cabinet, with screws