

MODELS:

TC-FL-36W-RGBW-BT-BR; TC-FL-12V-36W-RGBW-BT-BR

Model number parameter list:

Item	Model	Input Voltage	Power Factor	Watt	Input Current Max.	Weight
A	TC-FL-36W-RGBW-BT-BR	100-277VAC	≥0.9	36W	0.47A	5.4 lbs
B	TC-FL-12V-36W-RGBW-BT-BR	12VAC/DC	/	36W	4.2A	5.4 lbs

■ Suitable for use in the following locations:

- Ambient Temp: -4~+104°F
- Wet Locations

Note: Save these instructions for future reference.

1. Installation

Warning:

To avoid the risk of fire, explosion, or electric shock, this product should be installed, inspected, and maintained by a qualified electrician only, in accordance with all applicable electrical codes.

Warning:

To avoid electric shock:

- Be certain electrical power is OFF before and during installation and maintenance.
- Luminaire must be connected to a wiring system with an equipment-grounding conductor.

Warning:

To avoid explosion:

- Make sure the supply voltage is the same as the rated luminaire voltage.
- Do not install where marked operating temperatures exceed the ignition temperature of the hazardous atmosphere.
- Do not operate in ambient temperatures above those indicated on the luminaire nameplate.
- Keep lens tightly closed when in operation.

For supply connections use wire rated for at least 194°F

Installation:

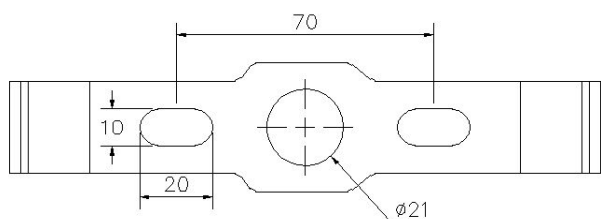


FIG.1

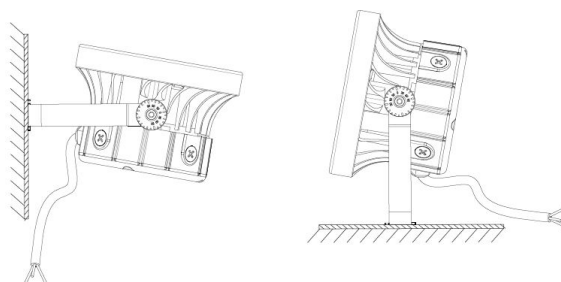
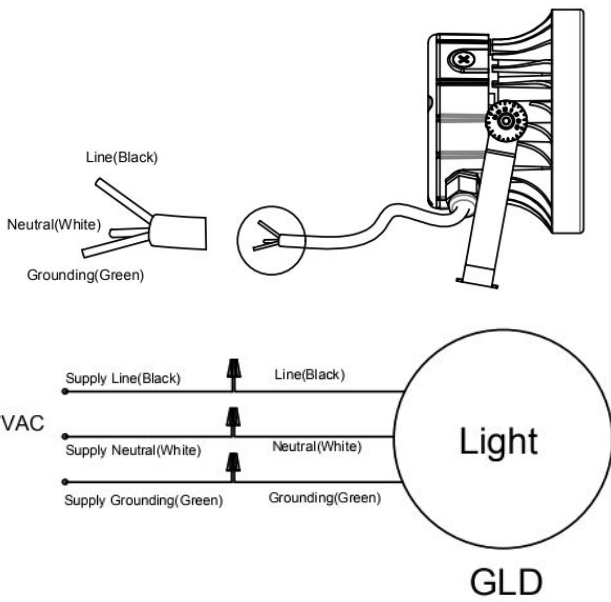


FIG.2

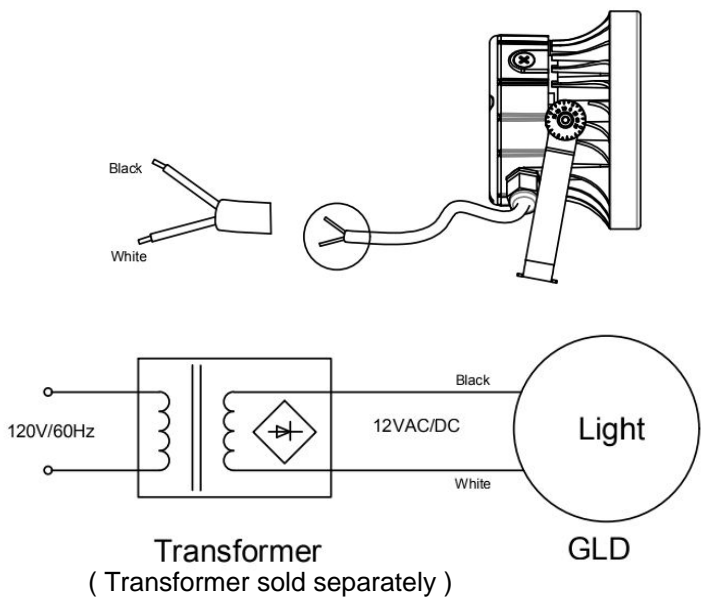
Step:

1. Use expansion bolts to secure the fixture on mounting surface.
2. Keep enough length wires to ensure adjusting angle unhindered.

Connect wires into wiring terminal; white wire to “Neutral” terminal, black wire to “Live” terminal, green wire to “Ground” terminal; and fix them by screws.


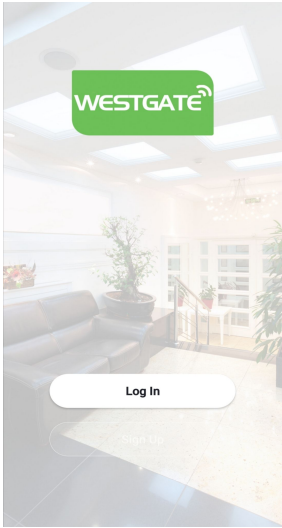
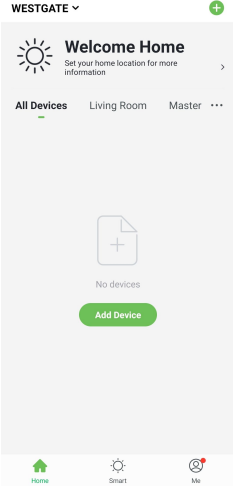
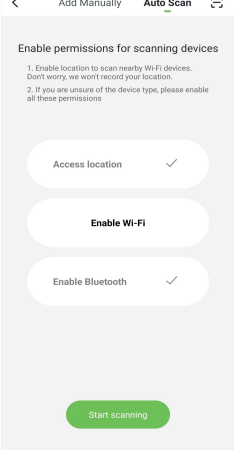
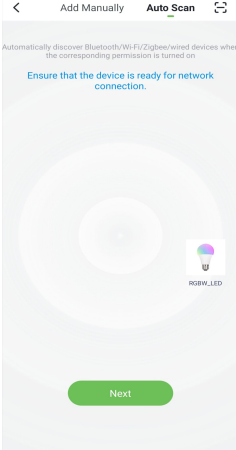
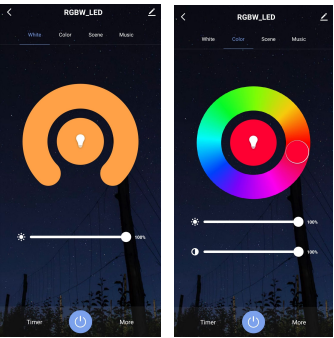


Wiring diagram for TC-FL-36W-RGBW-BT-BR



Wiring diagram for TC-FL-12V-36W-RGBW-BT-BR

APP connection steps

1	2	3
 <p>Download APP</p> <p>1. Scan above code 2. or search "Westgate Smart" in Apple Store or Google Play</p>	 <p>Register account and login</p>	 <p>Turn on the power to the light and tap the "+" icon on the top right corner of the app.</p>
4	5	6
 <p>Select "Auto Scan" and turn on Bluetooth and GPS.</p>	 <p>After scanning the fixture, click on the image to add it</p>	 <p>Dimmer, color, scene and group settings can be made after the addition.</p>

Question:

1. If cannot add fixtures

Reset the lamp, operation method: after the lamp is powered on, turn it on/off 3 times continuously (within 5S time).

2. If color changes of multiple fixtures are not synchronized

Place fixtures that need to be synchronized in the same group

After installation, please

- check whether the lighting fixture is firmly fixed.
- check whether wires are connected correctly.

At last, turn on the power, and check if the lighting fixture works well. If not, please turn off the power and contact with local dealer.

Warning: the luminaire shall be installed by qualified electrician.