

T8 SERIES COMMERCIAL INDOOR LIGHTING

T8-EZX-PRO-4FT-18W-40K-F
T8-EZX-PRO-4FT-18W-50K-F

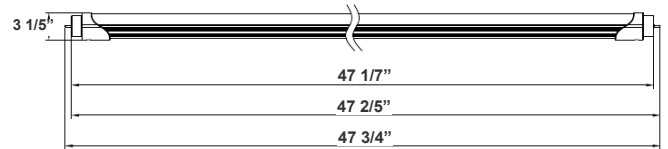
WESTGATE
THE FUTURE IS HERE...AND IT'S QUITE BRIGHT!

Customer Name: _____

Project Name: _____

Note: _____

Type: _____



Aluminum T8 Tube lamps switch from fluorescent tubes to LED, giving more cost efficiency by providing the same lumen output with less energy consumption. The LED tube offers a soft and bright light distribution.

47 3/4"(L) X 3 1/5" (D)

Features

- Type A + B (Dual UL)
- Type A: With Existing Ballast - UL No. E366061
- Type B: Ballast Override (AC Direct), Connect One End or Both Ends (Dual Function) - UL No. E342884
- 5-Year Warranty
- Frosted PC Lens

Technical Specifications

Electrical:

- Voltage: 120-277V; 50/60Hz AC
- Power Factor: >0.90
- THD: <20%
- Wattage: 18W
- Efficacy: 130 LPW

Mechanical:

- Base Type: G13
- Frosted PC Lens
- Aluminum Housing & PC lens
- Ambient Operating Temperature: -13°F to 113°F
- IP Rating: IP20 (Indoor)
- Shatterproof
- With Gold Wire
- Aluminum Back Channel

Lighting:

- No Mercury And Virtually No UV Emission.
- Total Lumens: 2340LM
- Color Temperatures: 4000K/5000K
- Color Rendering Index: CRI ≥ 80
- Beam Angle: 240°
- Rated life: 50,000 Hrs
- Compatible with fluorescent Emergency Ballast
- Compatible with fluorescent Dimming Ballast
- Compatible with 90% of electronic ballasts (see the list)

Applications:

- Aluminum T8 Tube lamps switch from fluorescent tubes to LED, giving more cost efficiency by providing the same lumen output with less energy consumption. The LED tube offers a soft and bright light distribution.

Other Models:

- 18W | 2340LM | T8-EZX-PRO-4FT-18W-40K-C
- 18W | 2340LM | T8-EZX-PRO-4FT-18W-50K-C

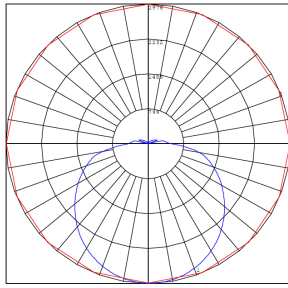
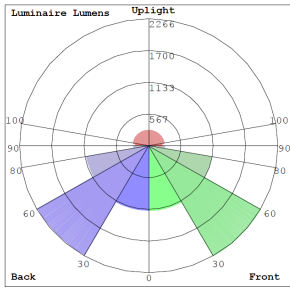


Phone: (877) 805-2252 | Fax: (877) 805-2252
www.westgatemfg.com

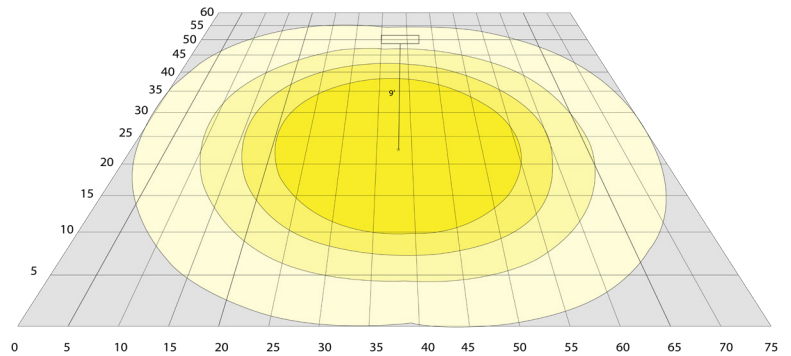


WG-02152022

Photometrics: T8-EZX-PRO-4FT-18W-F



BUG Rating: B3-U3-G3



Area 60'x 75' Mounting Height: 9'

Other Views:



Side View



Front View



Socket View

Performance Table: T8-EZX-PRO-4FT-18W-F

| MODEL NO. | Wattage | Voltage | Lumens | Color Temp. | BUG Rating | LPW |
|--------------------------|---------|----------|--------|-------------|------------|-----|
| T8-EZX-PRO-4FT-18W-40K-F | 18W | 120-277V | 2340LM | 4000K | B3-U3-G1 | 130 |
| T8-EZX-PRO-4FT-18W-50K-F | 18W | 120-277V | 2340LM | 5000K | B3-U3-G1 | 130 |

Sample Ordering

| Model | Material | Size | Watt | Color Temp. | Lens Type | | | | | | | |
|-------|----------|------|------|-------------|-----------|-----|---|-----|---|--|---|---|
| T8 | - | EZX | - | PRO | - | 4FT | - | 18W | - | | - | F |

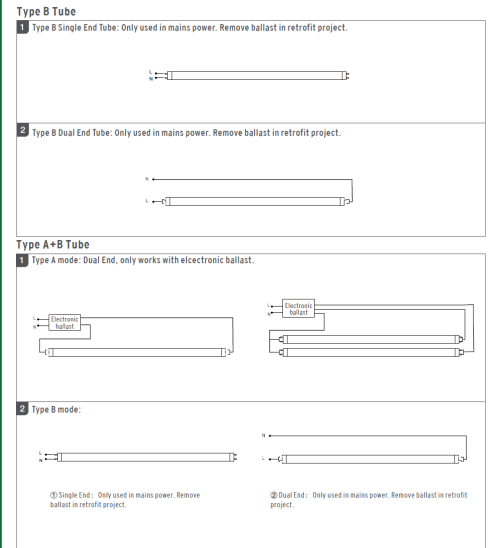
40K = 4000K
50K = 5000K

Example:

1. T8-EZX-PRO-4FT-18W-40K-F

(FOR 12W 4000K T8 4FT TUBE LAMP 120-277V)

WIRING DIAGRAM:



Other Models: T8-EZX-PRO-4FT-18W-C (Clear Model)



Close-up View



Side View



Back View



Compatible Ballasts List:

| Brand | Model No. | Start Type | Brand | Model No. | Start Type |
|--------|-----------------------|------------------------|----------------|-----------------------|------------------|
| ACT | ACT3P32ISUNVE | Instant Start | GE | GE232-MVPS-L | Programmed Start |
| ACT | ACT4P32ISUNVE | Instant Start | GE | GE232-MVPS-N | Programmed Start |
| DAMAR | 1688B | Instant Start | GE | GE-232-MV-PS-N | Programmed Start |
| DAMAR | 1688D | Instant Start | GE | GE-232-MVPS-XL | Programmed Start |
| DAMAR | 3654C | Instant Start | GE | GE240RES120-4PK | Programmed Start |
| EIKO | PM-2X32T8-UNV-IS | Instant Start | GE | GE240RES120-B | Programmed Start |
| ESPEN | VE232MVHIPLE | Instant Start | GE | GE332MAX-G-H | Instant Start |
| ESPEN | VE2P32MVHIPE 11068 | Instant Start | GE | GE332MAX-G-N | Instant Start |
| ESPEN | VE2P32MVHIPHE 11069 | Instant Start | GE | GE332MAX-G-N-DIYB | Instant Start |
| ESPEN | VE2P32MVHPPE 11080 | Programmed Start | GE | GE332MAXP-N/ULTRA | Instant Start |
| ESPEN | VE332MVHIPLE | Instant Start | GE | GE332-MVPS-L | Programmed Start |
| ESPEN | VE3P32MVHIPE 11070 | Instant Start | GE | GE-332-MVPS-XL | Programmed Start |
| ESPEN | VE3P32MVHIPLE 11056 | Instant Start | GE | GE432MAX-G-N | Instant Start |
| ESPEN | VE4P32MVHIPE 11072 | Instant Start | GE | GE432MAXG-N-DIYL | Instant Start |
| ESPEN | VE4P32MVHIPLE 11057 | Instant Start | GE | GE432MAX-L/Ultra | Instant Start |
| ESPEN | VE4P32MVHPPE 11086 | Programmed Start | GE | GE432MAX-N/Ultra | Instant Start |
| ESPEN | VEL100BN-4C | Instant Start | GE | GE432MAXP-L/ULTRA | Instant Start |
| ESPEN | VEL30BN-2C-10V | Instant Start/ Dimming | HALCO | EP232IS/MV/HE | Instant Start |
| ESPEN | VEL30BN-2C-10V(White) | Instant Start/ Dimming | HALCO | EP332IS/L/MV/HE | Instant Start |
| ESPEN | VEL-4P32-SC | Instant Start | HALCO | EP332IS/MV/HE | Instant Start |
| ESPEN | VEL50BN-2C | Instant Start | HALCO | EP432IS/L/MV/HE | Instant Start |
| FULHAM | FH12-UNV-1400L-CEC | Emergency | HOWARD | EP2/32IS/MV/MC/HE | Instant Start |
| GE | GE132MAX-G-N | Instant Start | HOWARD | EP4/32IS/MV/MC/HE | Instant Start |
| GE | GE132MAX-H/Ultra | Instant Start | HOWARD | EPL2/32IS/MV/MC/HE | Instant Start |
| GE | GE-132-MV-N | Instant Start | HOWARD | EPL3/32IS/MV/SC/HE | Instant Start |
| GE | GE132-MVPS-H | Programmed Start | HOWARD | EPL4/32IS/MV/MC/HE | Instant Start |
| GE | GE-132-MV-PS-L | Programmed Start | KEYSTONE | KTEB-232RIS-1-TP-SL/J | Instant Start |
| GE | GE232-120RES-B | Instant Start | KEYSTONE | KTEB-232-UV-IS-N-P | Instant Start |
| GE | GE232MAX-G-N | Instant Start | KEYSTONE | KTEB-332-UV-IS-N-P | Instant Start |
| GE | GE232MAX-G-N-DIYB | Instant Start | KEYSTONE | KTEB-432RIS-1-TP-SL | Instant Start |
| GE | GE232MAXG-N-DIYL | Instant Start | KEYSTONE | KTEB-432-UV-IS-N-P | Instant Start |
| GE | GE232MAX-L/ULTRA | Instant Start | KEYSTONE | KT-EMRG-1400 | Emergency |
| GE | GE-232-MV-N | Instant Start | KEYSTONE | KT-EMRG-500-SL | Emergency |
| GE | GE232-MV-PS-H | Programmed Start | OSRAM SYLVANIA | QHE 3X32T8/UNV-PSN-SC | Programmed Start |



| Brand | Model No. | Start Type | Brand | Model No. | Start Type |
|-----------------|-------------------------|------------------|-----------------|----------------------|------------------|
| OSRAM SYLVANIA | QHE 4X32T8/UNV PSX-SC | Programmed Start | PHILIPS ADVANCE | REZ-3S32-SC | Programmed Start |
| OSRAM SYLVANIA | QHE 1X32T8/UNV ISL-SC | Instant Start | PLUSRITE | BAF232IS/MV | Instant Start |
| OSRAM SYLVANIA | QHE 1X32T8/UNV ISN-SC | Instant Start | PLUSRITE | BAF232PS/MV | Programmed Start |
| OSRAM SYLVANIA | QHE 2X32T8/UNV ISL-SC-1 | Instant Start | PLUSRITE | BAF332IS/MV | Instant Start |
| OSRAM SYLVANIA | QHE 2X32T8/UNV PSN-MC | Programmed Start | PLUSRITE | BAF432IS/MV | Instant Start |
| OSRAM SYLVANIA | QHE 2X32T8/UNV PSX-MC | Programmed Start | ROBERTSON | IEA432T8120N 3P20135 | Instant Start |
| OSRAM SYLVANIA | QHE 3X32T8/UNV HT-SC | Instant Start | SUNLITE | 40155-SU SB/232/MV | Instant Start |
| OSRAM SYLVANIA | QHE 3XLEDT8/UNV-ISN-SC | Instant Start | ULTRASAVE | UT 232347 | Instant Start |
| OSRAM SYLVANIA | QHE 4X32T8/UNV ISN-SC | Instant Start | UNIVERSAL | B232IUNV-C | Instant Start |
| OSRAM SYLVANIA | QHE 4XLEDT8/UNV-ISN-SC | Instant Start | UNIVERSAL | B232IUNVEL-N | Instant Start |
| OSRAM SYLVANIA | QTP 2X32T8/UNV ISN-SC | Programmed Start | UNIVERSAL | B232IUNVHEH-A | Instant Start |
| OSRAM SYLVANIA | QTP 2X59T8/UNV ISN-SC | Instant Start | UNIVERSAL | B232IUNVHP-N | Instant Start |
| OSRAM SYLVANIA | QHE 3X32T8/UNV-PSN-SC | Instant Start | UNIVERSAL | B232PUNVHE-B | Programmed Start |
| OSRAM SYLVANIA | QHE 4X32T8/UNV PSX-SC | Instant Start | UNIVERSAL | B332IUNVEL-A | Instant Start |
| PHILIPS ADVANCE | ICN-1P32-N | Instant Start | UNIVERSAL | B332IUNVHE-A | Instant Start |
| PHILIPS ADVANCE | ICN-2P32-N | Instant Start | UNIVERSAL | B332IUNVHP-A | Instant Start |
| PHILIPS ADVANCE | ICN-2S40-N | Programmed Start | UNIVERSAL | B432IUNVHE-A | Instant Start |
| PHILIPS ADVANCE | ICN-3P32-N | Instant Start | UNIVERSAL | B432IUNVHP-A | Instant Start |
| PHILIPS ADVANCE | ICN-4P32-N | Instant Start | UNIVERSAL | B432PUNVHE-A | Programmed Start |
| PHILIPS ADVANCE | IOP-2P32-HL-N | Instant Start | | | |
| PHILIPS ADVANCE | IOP-2P32-LW-N | Instant Start | | | |
| PHILIPS ADVANCE | IOP-2P32-N | Instant Start | | | |
| PHILIPS ADVANCE | IOP-2P59-N | Instant Start | | | |
| PHILIPS ADVANCE | IOP-2PSP32-N | Programmed Start | | | |
| PHILIPS ADVANCE | IOP-4PSP32-SC | Programmed Start | | | |
| PHILIPS ADVANCE | IOPA-1P32-LW-N | Instant Start | | | |
| PHILIPS ADVANCE | IOPA-2P32-LW-N | Instant Start | | | |
| PHILIPS ADVANCE | IOPA-2P32-N | Instant Start | | | |
| PHILIPS ADVANCE | IOPA-3P32-LW-N | Instant Start | | | |
| PHILIPS ADVANCE | IOPA-3P32-LW-SC | Instant Start | | | |
| PHILIPS ADVANCE | IOPA-3P32-N | Instant Start | | | |
| PHILIPS ADVANCE | IOPA-4P32-LW-N | Instant Start | | | |
| PHILIPS ADVANCE | IOPA-4P32-N | Instant Start | | | |
| PHILIPS ADVANCE | REB-4P32-SC | Instant Start | | | |
| PHILIPS ADVANCE | RELB-2S40-N | Programmed Start | | | |
| PHILIPS ADVANCE | REZ-2S32-SC | Programmed Start | | | |

