

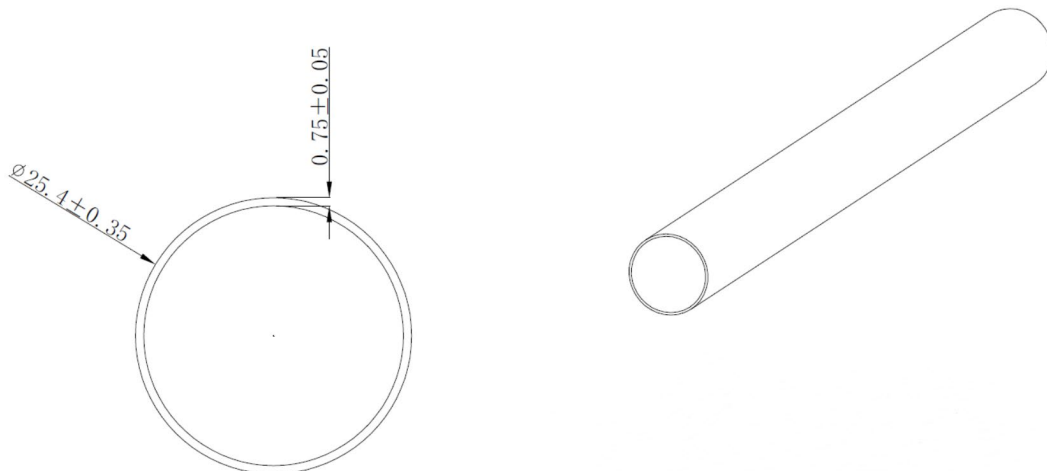
Installation Instruction

T8 8FT TYPE A+B LED Tube Light

MARKINGS/WARNING:

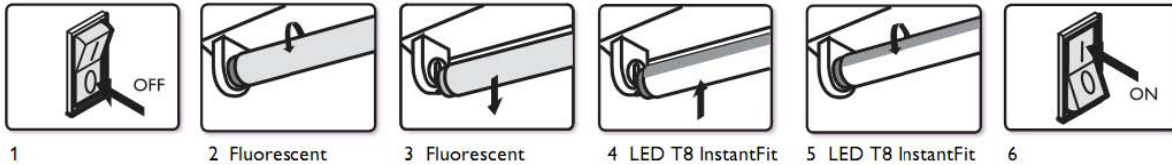
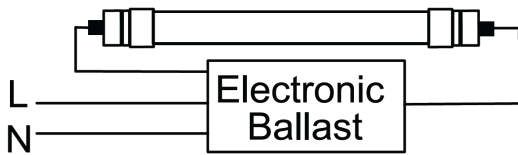
- a. Risk of fire or electric shock. When work with electronic ballast please check the compatible list first! If you do not find your ballast on the list then please bypass the fixture, or please contact us! Do not install the LED tube with the ballast which not on the ballast compatible list,risk of firing!
- b. Risk of fire or electric shock. LED Retrofit Kit installation requires knowledge of luminaires electrical systems. If not qualified, do not attempt installation. Contact a qualified electrician.
- c. Risk of fire or electric shock. Install this kit only in the luminaires that have the construction features and dimensions shown in the photographs and/or drawings and where the input rating of the retrofit kit does not exceed the input rating of the luminaire.
- d. Do not make or alter any open holes in an enclosure of wiring or electrical components during kit installation
- e. To prevent wiring damage or abrasion, do not expose wiring to edges of sheet metal or other sharp objects.
- f. To avoid potential fire or shock hazard, do not use this retrofit kit in luminaires employing shunted bi-pin lampholders. Note: Shunted lamp holders are found only in fluorescent luminaires with Instant-Start ballasts. Instant-start ballasts can be identified by the words "Instant Start" or "I.S." marked on the ballast. This designation may be in the form of a statement pertaining to the ballast itself, or may be combined with the marking for the lamps with which the ballast is intended to be used, for example F40T12/IS. For more information, contact the LED luminaire retrofit kit manufacturer.
- g. Installers should not disconnect existing wires from lampholder terminals to make new connections at lampholder terminals. Instead installers should cut existing lampholder leads away from the lampholder and make new electrical connections to lampholder lead wires by employing applicable connectors.
- h. For a linear tubular LED lamp conversion, there shall be text or a diagram showing how the supply connections were made to the lampholders so the correct connections will be made to the lamp when the lamp is installed or replaced.
- i. This retrofit kit is accepted as a component of a luminaire where the suitability of the combination shall be determined by authorities having JURISDICTION.
- j. If the tube is installed as Type B, the luminaire, once modified as retrofit fixture, will no longer operate fluorescent lamps. Not suitable for use with Dimmer.

Structure



Unit:mm

Type A Installation introduction:

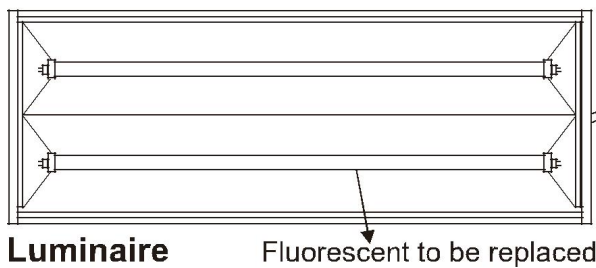


Instructions

1. Switch-off power to the luminaire.
2. Remove diffuser (if provided).
3. Remove the existing fluorescent lamps from the luminaire.
4. Install the LED tube lamp.
5. Install diffuser (if removed in step 2)
6. Switch on power to the luminaire.
7. Before installation, please check specifications for the most current ballast compatibility list, if no match, please insert led tubes

Type B Installation introduction:

1. DISCONNECT POWER OF LUMINAIRE



Disconnect power to luminaire or circuit (if possible). Ensure all power is off by using a voltmeter or other method to confirm.

Disconnect the power

2. REMOVE EXISTING TUBE LAMP(S)

- a. Remove troffer lens, if present.
- b. Remove existing fluorescent by rotating one quarter turn and sliding lamp(s)
- c. Remove ballast cover. (Cover may be secured with screws or tabs)



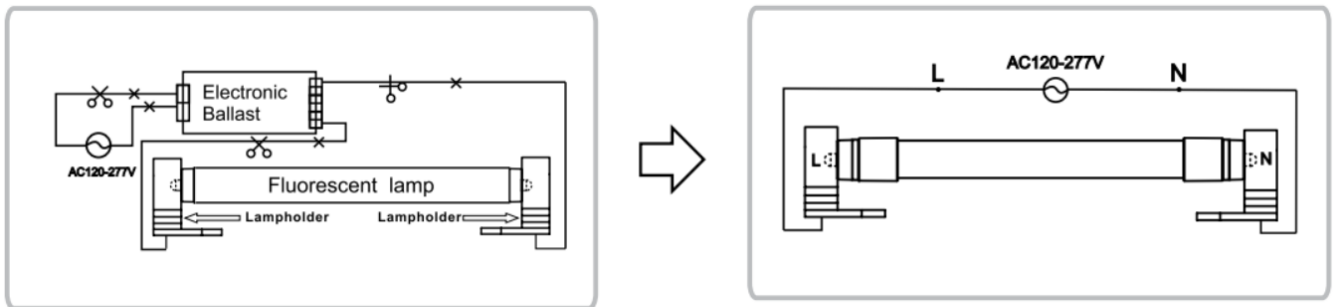
a) Troffer and lamps (lens removed)

b) Remove tube lamps

c) Remove ballast cover

3. REWIRE THE FIXTURE

- 1) Disconnect the wires between starter and ballast.
- 2) Connect two wires to branch circuit L and N according to the below figure.



Input voltage:120-277V 50/60Hz

FA8

4. INSERT LED TUBES

- a. Read label on the LED tube to ensure the power end of LED is aligned with powered tube socket, then insert LED lamp in the normal way by sliding pins into sockets and rotating a quarter turn until LED tube locks in place.
- b. Clip the anti-rotating clip on the middle of the tube and make sure the magnet is attached to the fixture to prevent tube droop and rotation
- c. LED lamps are now fully installed.
- d. Replace troffer lens, if present.
- e. After modification completed. Attach the Replacement Marking and cautionary Label to a visible place on the luminaire and keep it visible after installation.

5. RESTORE THE POWER OF LUMINAIRE

Restore power to circuit/luminaire and test light. If necessary, adjust position of LED tube, and enjoy your new LED tube light!