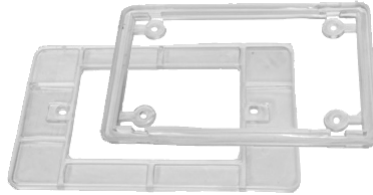
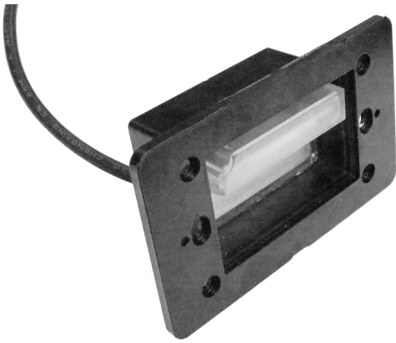
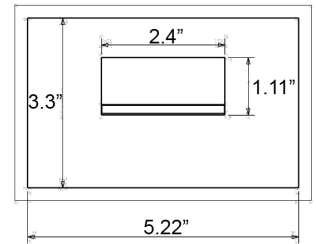
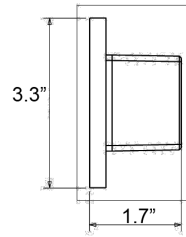


DIMENSIONS:

FITS: STANDARD SINGLE-GANG JUNCTION BOX



Includes PVC Gasket Set for



SLEA-12V-50K
SLEA-12V-30K

SINGLE-GANG STEP LIGHT ENGINES FOR RECESSED TRIMS

Ideal for recessed step lighting, walkway and path lighting, courtyard lighting and deck lighting. Optional face plates sold separately.

ELECTRICAL SPECIFICATIONS:

- Voltage: 12V AC/DC
- Wattage: 2W
- Efficacy: 43LM/W

HOUSING SPECIFICATIONS:

- PVC housing
- PVC Gasket set for j-box or weatherproof box mounting
- 1FT. STP-2 18AWG lead wire
- Operating temperature: -40°F ~ 104°F
- IP rating: IP67, Wet Locations

CERTIFICATIONS:



MODEL	WATTS	VOLTAGE	LUMENS	COLOR TEMP
SLEA-12V-50K	2W	12V AC/DC	86LM	5000K
SLEA-12V-30K	2W	12V AC /DC	86LM	3000K

LIGHTING SPECIFICATIONS:

- Integrated COB LED Bar (Weatherproof) with built-in driver
- Lens: PC Lens
- Total lumens: 86LM
- Color temperature: 3000K / 5000K

WARRANTY: 1 years

INSTALLATION:

single-gang J-Box or Weatherproof Box (Not included)

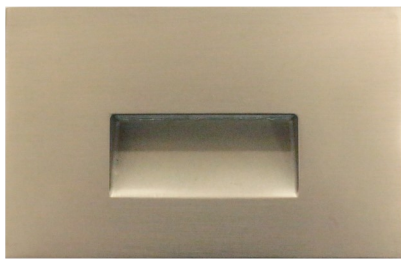


SLEA-12V-50K
SLEA-12V-30K

**SINGLE-GANG STEP LIGHT ENGINES FOR
 RECESSED TRIMS**

FACE PLATES: Precision Cast Aluminum

MODEL	WATTS	VOLTAGE	LUMENS	COLOR TEMP
SLEA-12V-50K	2W	12V AC/DC	86LM	5000K
SLEA-12V-30K	2W	12V AC /DC	86LM	3000K



SLT-A-BN (BRUSHED NICKEL FINISH)



SLT-A-ORB—OIL RUBBED BRONZE FINISH



SLT-A-AZ—ANTIQU BRONZE FINISH



SLT-A-WH—WHITE FINISH

