

PML SERIES Outdoor Lighting

PML-M-MCT-ORB
MCT PIER-MOUNT LIGHTS

MCT Multi Color Temperature (Selectable)

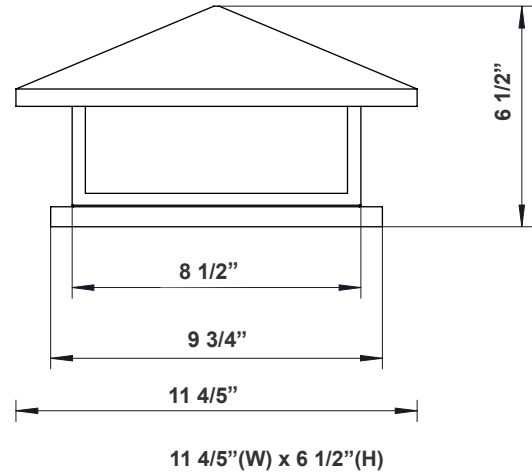
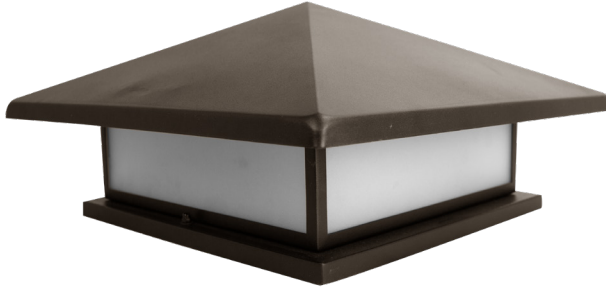
WESTGATE
THE FUTURE IS HERE...AND IT'S QUITE BRIGHT!

Customer Name: _____

Project Name: _____

Note: _____

Type: _____



LED Pier Mount Lights With Frosted Lens Is Ideal For General Site Lighting, Loading Docks, Doorway, Pathway And Parking Areas.

Features

- Back Plate: Steel with Mounting/Gasket Installed
- Oil-Rubbed Bronze
- Frosted Glass Lens
- 7-Year Warranty
- Multi-CCT Switch Is Inside Fixture

Technical Specifications

Electrical:

- Voltage: 120V AC 60Hz
- Wattage: 15W
- Power Factor: >0.90
- Efficacy: 29 LPW

Mechanical:

- Back plate: Steel with Mounting/Gasket Installed
- Oil-Rubbed Bronze
- Frosted Glass Lens
- Operating Temperature: -4°F to 49°F
- IP44 Suitable For Wet Location
- 7-Year Warranty

Lighting:

- Multi-CCT Switch Is Inside Fixture
- Total Lumens: 430LM
- Color Temperatures: 3000K/ 4000K/ 5000K
- Color Rendering Index: CRI ≥ 80
- Beam Angle: 90°
- Rated Life: 70,000 Hrs

Applications:

- LED Pier Mount Lights With Frosted Lens Is Ideal For General Site Lighting, Loading Docks, Doorway, Pathway And Parking Areas.

Other Models:

- 12W | 345LM | PML-S-MCT-ORB
- 18W | 460LM | PML-L-MCT-ORB

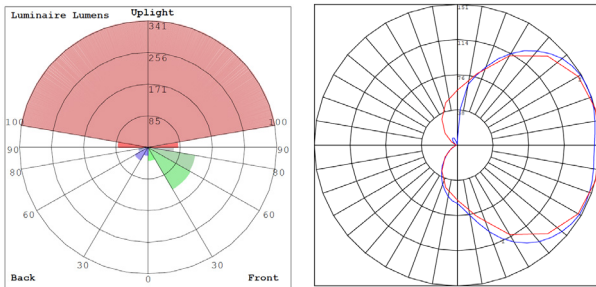


Phone: (877) 805-2252 | Fax: (877) 805-2252
www.westgatemfg.com |

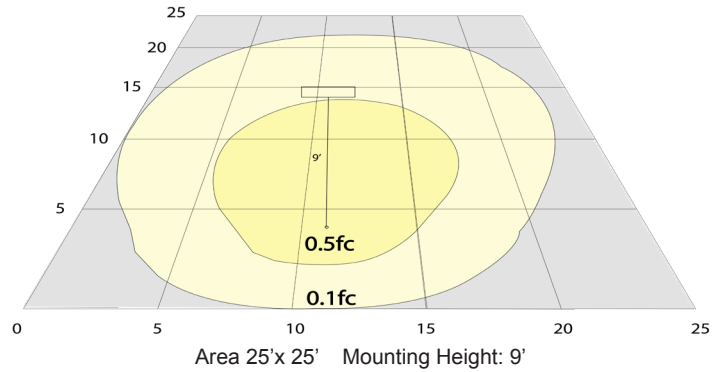


WG-02212023

Photometrics: PML-M-MCT-ORB



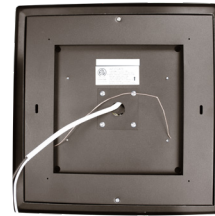
BUD Rating: B0-U3-G1



Other Views:



Side View



Back View

Performance Table: PML-M-MCT-ORB

MODEL NO.	Wattage	Voltage	Lumens	Color Temp.	BUG Rating	LPW
PML-M-MCT-ORB	15W	120V	430LM	3000K 4000K 5000K	B0-U3-G1	29

Sample Ordering

Model	Size	Color Temp.	Housing			
PML	-	M	-	MCT	-	ORB

Accessories:

Blank = No Option For Accessories

PML-M-HGLK = PML-M Honey Color Glass Replacement Glass Lens Kit

ACCESSORIES:



PML-M-HGLK
Shown with optional Honey Color
Glass Lens (Field-installed)

Other Models:



PML-S-MCT-ORB



PML-L-MCT-ORB

