

# LWAX SERIES Outdoor Lighting

LWAX-MD-30W-30K  
LWAX-MD-30W-40K  
LWAX-MD-30W-50K



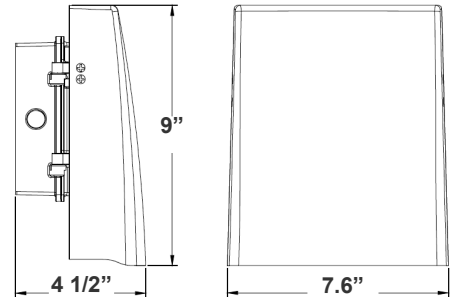
Ideal for general site lighting, alleys, loading docks, doorway, pathway, and parking areas. Great for use with motion sensors or another instant on/off controls.

Customer Name: \_\_\_\_\_

Project Name: \_\_\_\_\_

Note: \_\_\_\_\_

Type: \_\_\_\_\_



**7 3/5" (W) x 9" (H) x 4 1/2" (D)**

## Features

- High Light Transmittance, Anti-UV and Fire Resistant PC Lens
- Four 1/2" Knockouts: 1 Top, 1 on Each Side, 1 Back
- Die-Cast Aluminum With Powder Coat Finish (Dark Bronze)
- 7-Year Warranty

## Technical Specifications

### Electrical:

- Voltage: 120-277VAC 60Hz
- Wattage: 30W
- Power Factor: >0.95
- Efficacy: 130 LPW

### Mechanical:

- Die-Cast Aluminum With Powder Coat Finish
- High Light Transmittance, Anti-UV and Fire Resistant Shatterproof PC Lens
- Light Head Can Be Adjusted From 0° to 90°
- Full Cutoff, Dark Sky Compliant
- Four 1/2" Knockouts: 1 Top, 1 on Each Side, 1 Back
- Operating Temperature: -4°F -104°F
- Wet Location
- 7-Year Warranty
- IP65

### Lighting:

- Dimming: 0~10V Dimmable
- The Type II Distribution is Used For Wide Walkways, On Ramps and Entrance Roadways, As Well As Other Long, Narrow Lighting
- Total Lumens: 3900LM
- Color Temperatures: 3000K/ 4000K/ 5000K
- Color Rendering Index: CRI ≥ 80
- Beam angle: 80° x 100°
- Rated life: 70,000 Hrs

### Applications:

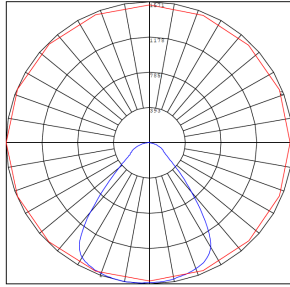
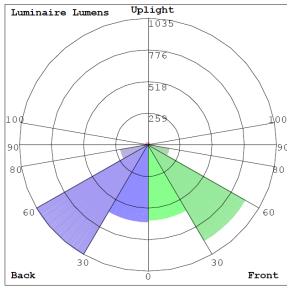
- General site Lighting
- Alleys
- Loading docks
- Doorways
- Pathways
- Parking areas

### Other Models:

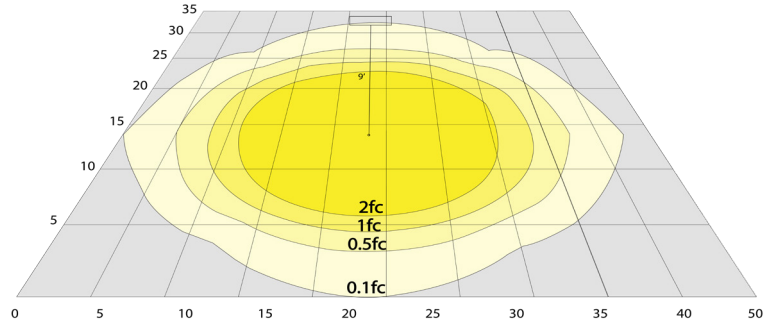
- 12W | 1500LM | LWAX-SM-12W-30K
- 12W | 1500LM | LWAX-SM-12W-40K
- 12W | 1500LM | LWAX-SM-12W-50K
- 12W | 1500LM | LWAX-SM-12W-30K-WH
- 12W | 1500LM | LWAX-SM-12W-40K-WH
- 12W | 1500LM | LWAX-SM-12W-50K-WH



## Photometrics: LWAX-MD-30W

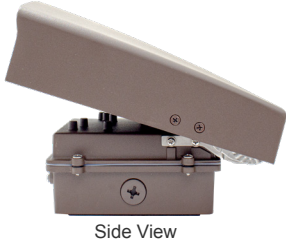


BUD Rating: B2-U2-G1

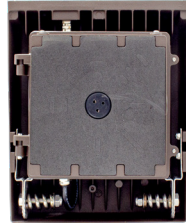


Area 35'x 50' Mounting Height: 9'

## Other Views:



Side View



Front View



Back View

## Performance Table: LWAX-MD-30W

MODEL NO.	Wattage	Voltage	Lumens	Color Temp.	BUG Rating	LPW
LWAX-MD-30W-30K	30W	120~277V	3900LM	3000K	B2-U2-G1	130
LWAX-MD-30W-40K	30W	120~277V	3900LM	4000K	B2-U2-G1	130
LWAX-MD-30W-50K	30W	120~277V	3900LM	5000K	B2-U2-G1	130

## Sample Ordering

**Model**      **Size**      **Wattage**      **Color Temp.**  
 -  -  -

30K = 3000K  
 40K = 4000K  
 50K = 5000K

### Accessories:

Blank = No Option For Accessories  
 LWA-SH2 = SHROUD

### Factory-Installed Options:

Blank = No Option For Accessories  
 OPT-EM-FM1INT= INTERNAL EMERGENCY BACKUP BATTERY  
 OPT-SEN-3MRLV-5 = PROGRAMMABLE MICROWAVE BI-LEVEL  
 OPT-CLR-85 = COLOR PAINT  
 OPT-PC-B = BUTTON  
 OPT-TRS-T120 = TAMPER RESISTANT SCREW  
 WEC-8RC = OPTIONAL REMOTE

### ACCESSORIES:



LWA-SH2

### FACTORY-INSTALLED OPTIONS:



OPT-EM-FM1INT



OPT-SEN-3MRLV-5



WEC-8RC



OPT-PC-B

## Example:

- LWAX-MD-30W-50K
- LWAX-MD-30W-50K  
LWA-SH2
- LWAX-MD-30W-50K  
LWA-SH2  
OPT-EM-FM1INT

(FOR LWAX 30W 5000K FIXTURE 120-277V)

(FOR LWAX 30W 5000K FIXTURE 120-277V)  
(SHROUD)

(FOR LWAX 30W 5000K FIXTURE 120-277V)  
(SHROUD)  
(INTERNAL EMERGENCY BACKUP BATTERY)



**COLOR CHART:** \* Choose from one of our Premium Colors with no set-up fee.

**Gloss:**



SILVER METALLIC  
70 GLOSS  
T357-GR105



SILVER METALLIC  
30 GLOSS  
T353-GR06



DARK RED 90  
GLOSS  
P009-RD02



INTERNATIONAL  
ORANGE 90  
GLOSS  
T009-OG26



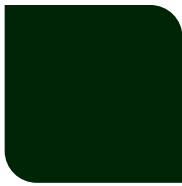
SAFETY ORANGE  
90 GLOSS  
T009-OG01



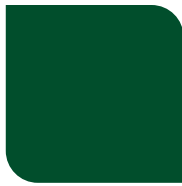
YELLOW 90  
GLOSS  
T009-YL14



YELLOW 90  
GLOSS  
T009-YL01



TRAFFIC GREEN  
70 GLOSS  
T007-GN16



GREEN 70 GLOSS  
T007-GN13



GREEN 60 GLOSS  
C006-GN03



BLUE 90 GLOSS  
T009-BL01



DARK BLUE 80  
GLOSS  
T008-BL20



RAL 8028 TERRA  
BROWN 90 GLOSS  
C209-BR358

**Hammer:**



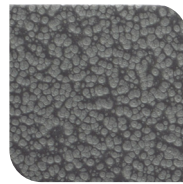
WHITE HAMMER  
T013-WH09



BEIGE HAMMER  
T013-BG38



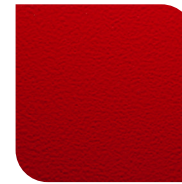
GREY HAMMER  
C013-GR08



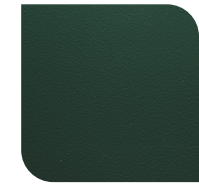
SILVER  
HAMMERTONE  
T064-GR05



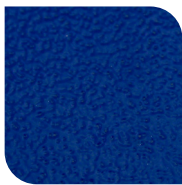
BLACK HAMMER  
T013-BK62



RED HAMMER  
T013-RD15



GREEN HAMMER  
T013-GN220



BLUE HAMMER  
T013-BL468



BRONZE HAMMER  
T012-BR161

**Texture:**



WHITE TEXTURE  
C031-WH120



FLINT GRAY  
TEXTURE  
T243-GR522



BLACK TEXTURE  
C241-BK109



RED TEXTURE  
T241-RD129



BLUE TEXTURE  
C241-BL544

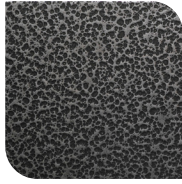


OIL RUBBED  
BRONZE TEXTURE  
T291-BR251

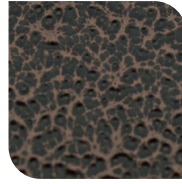
**Vein:**



BLACK/WHITE  
VEIN  
T075-WH34



SILVER VEIN  
T375-BK26



COPPER VEIN  
EXTERIOR  
T075-BK211



GOLD VEIN  
T375-BK10



COPPER VEIN  
T375-BK07

