

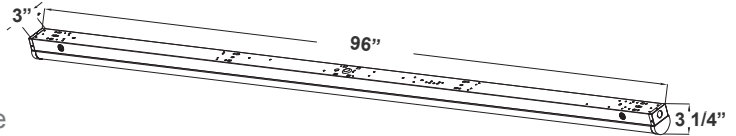
LSN SERIES Commercial Lighting

LSN-8FT-64W-40K-D
LSN-8FT-64W-50K-D
8FT NARROW STRIP

Customer Name: _____
Project Name: _____
Note: _____ | Type: _____



Selection:



LED Strip Light is a cost-effective, energy-efficient lighting fixture for surface mount applications such as corridors, stairwells, public rooms, schools, hospitals utility areas, etc.

Ideal choice for residential, commercial, and industrial lighting. Steady performance and long lifetime. Ideal for applications requiring fixtures with motion sensor or battery backup, see factory-installed options below

96"(L) x 3"(W) x 3 1/4"(H)

Features

- High Lumen Efficiency
- Ceiling Mount or Suspended Mount
- Linkable (Optional Alignment Bracket Available)

Technical Specifications

Electrical:

- Voltage: 120-277VAC 60Hz
- Wattage: 64W
- Power Factor: >0.99
- Efficacy: 130 LPW

Mechanical:

- Whit Finish
- Lens: Polycarbonate Frosted Lens, Shatter Resistant Translucent Lens Caps Illuminate With The Light.
- Integrated Lens & LED Module for Easy Installation & Ceiling Mount or Suspended Mount
- Junction Box Cover Kit Included, It Sits on Any 3" or 4" Round Junction Boxes
- Operating Temperature: -4°F -122°F
- Housing: Cold-rolled Steel
- Lens: Polycarbonate Frosted Lens
- IP20, Indoor Use Only
- 5-Year Warranty

Lighting:

- Dimmable: 0~10V Dimming
- Total Lumens: 8320LM
- Color Temperatures: 4000K/5000K
- Color Rendering Index: CRI ≥ 80
- Reduces Energy Consumption Up to 80% Compared to a Fluorescent Fixture
- Rated life: 50,000 Hrs

Applications:

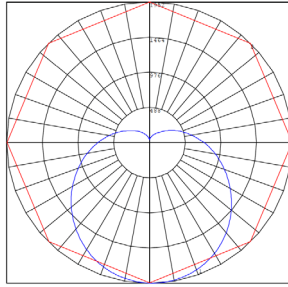
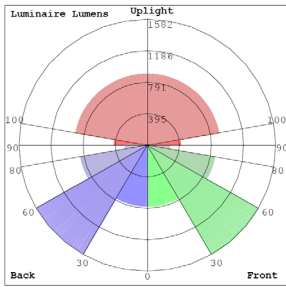
- LED Strip Light is a cost-effective, energy-efficient lighting fixture for surface mount applications such as corridors, stairwells, public rooms, schools, hospitals utility areas, etc.
- Ideal for applications requiring fixtures with motion sensor or battery backup, see factory-installed options below
- Ideal for residential, commercial, and industrial lighting. Steady performance and long lifetime

Other Models:

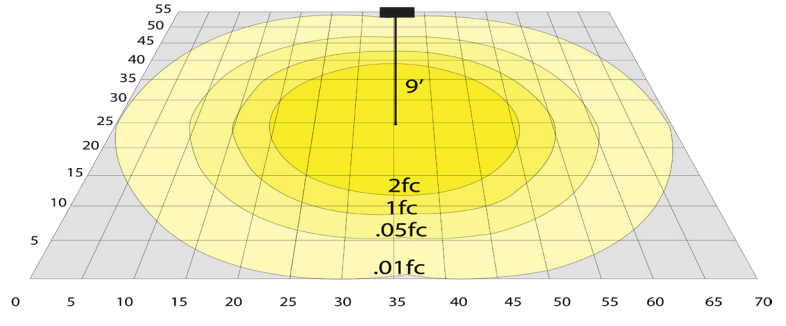
- 40W | 5200LM | LSN-4FT-40W-35K-D
- 40W | 5200LM | LSN-4FT-40W-40K-D
- 40W | 5200LM | LSN-4FT-40W-50K-D



Photometrics: LSN-8FT-64W-D



BUD Rating: B2-U4-G3



64W 5000K, Area 55'x 70' Mounting Height: 9'

Other Views:



Performance Table: LSN-8FT-64W-D

MODEL NO.	Wattage	Voltage	Lumens	Color Temp.	BUG Rating	LPW
LSN-8FT-64W-40K-D LSN-8FT-64W-50K-D	64W	120~277V	8320LM	3500K 4000K 5000K	B2-U4-G3	130

Sample Ordering

Model Size Wattage Color Temp.

LSN - 8FT - 64W - - D

40K = 4000K
50K = 5000K

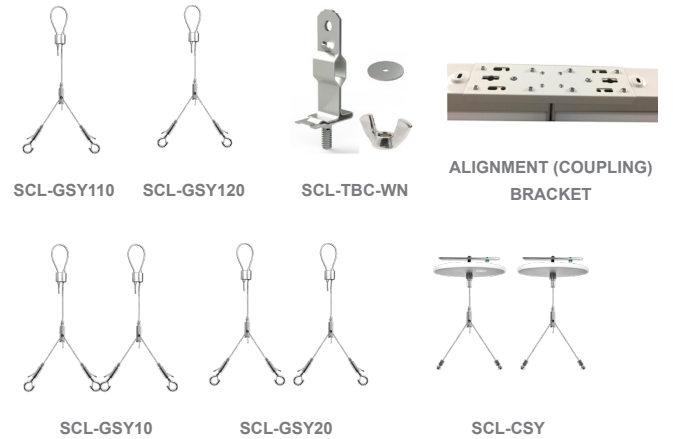
Accessories:

Blank = No Option For Accessories
 LSN-CB = LSN SERIES ALIGNMENT BRACKET
 SCL-TBC-WN = T-BAR CLIP WITH SUSPENSION HOLE ON TOP. WING NUT AND WASHER INCL.
 SCL-CSY = ADJUSTABLE 1/16" 6FT. SUSPENSION KIT WITH Y-CONNECTOR KEY HOLE SET + 2 T-BAR CLIPS + 1 CABLE BUSHING + 3 PLASTIC TIE STRAPS - 70 LBS. MAX LOAD
 SCL-GSY10 = HEAVY-DUTY ADJUSTABLE 1/16" 10FT. SUSPENSION KIT WITH Y-CONNECTOR & LOOP GRIPPER & HOOKS - 70 LBS. MAX LOAD (2 PER SET)
 SCL-GSY20 = HEAVY-DUTY ADJUSTABLE 1/16" 20FT. SUSPENSION KIT WITH Y-CONNECTOR & LOOP GRIPPER & HOOKS - 70 LBS. MAX LOAD (2 PER SET)
 SCL-GSY110 = ADJ. 20FT 1/16in SINGLE SUSPENSION CABLE WITH Y HOOK ENDS. LOOP GRIPPER ON TOP 70 LBS. MAX LOAD (ORDER 3 FOR 8FT.)
 SCL-GSY120 = ADJ. 20FT 1/16in SINGLE SUSPENSION CABLE WITH Y HOOK ENDS. LOOP GRIPPER ON TOP 70 LBS. MAX LOAD (ORDER 3 FOR 8FT.)

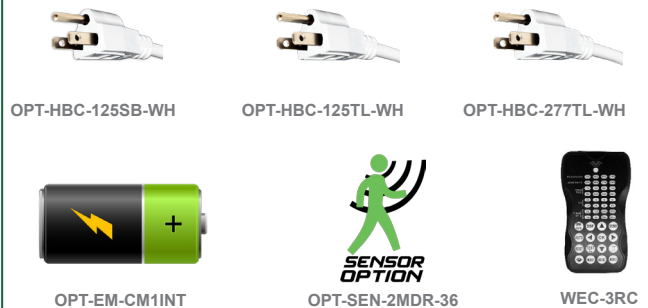
Factory-Installed Options:

Blank = No Option For Accessories
 OPT-EM-CM1INT= INTERNAL EMERGENCY BACKUP BATTERY
 OPT-SEN-2MDR-36= PROGRAMMABLE MICROWAVE BI-LEVEL
 OPT-HBC-125TL-WH = NEMA TWIST-LOCK PLUG 8FT, 15A, 125V
 OPT-HBC-277TL-WH = NEMA TWIST-LOCK PLUG 8FT, 15A, 277V
 OPT-HBC-125SB-WH = STRAIGHT BLADE PLUG 10FT, 15A,125V, 3-CONDUCTOR 18AWG
 WEC-3RC = OPTIONAL REMOTE

ACCESSORIES:



FACTORY-INSTALLED OPTIONS:



Example:

1. LSN-8FT-64W-40K-D (FOR LSN 64W 40K FIXTURE 120-277V)
2. LSN-8FT-64W-40K-D (FOR LSN 64W 40K FIXTURE 120-277V)
LSN-CB (LSN SERIES ALIGNMENT BRACKET)

