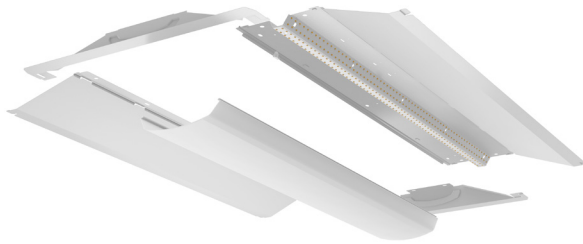


LRT RETROFIT TROFFER DOOR REPLACEMENT



TECHNICAL SPECIFICATIONS:

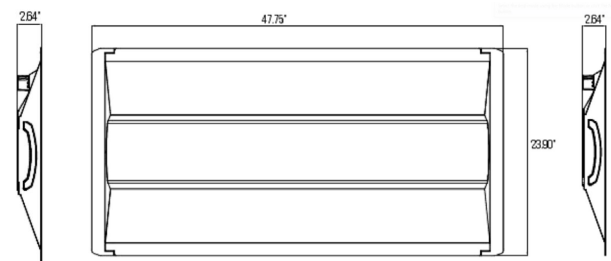
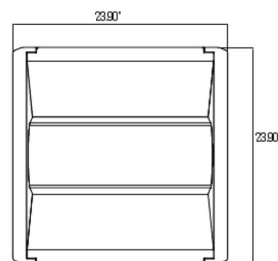
- :: See application below
- :: Input Voltage: 120~277VAC, 50/60Hz
- :: Housing: Steel base with white powder coating
- :: Steel Thickness: 24 Gauge
- :: Lens: Frosted diffuse PC lens
- :: Efficacy: 130LM/W
- :: Beam Angle: 140°
- :: CRI: >80
- :: Dimmable: 0~10V dimming
- :: IP rating: IP20 (Indoor)
- :: Operating Temperature: -4°F~131°F
- :: Life Span: 50,000 hours
- :: 5-year warranty
- :: Retrofit baskets included

FEATURE:

- :: Replaces prismatic lens on standard fluorescent troffer fixtures to create a modern & efficient office environment

APPLICATIONS:

- :: Replaces door frame & lens of traditional fluorescent flat-lens troffer fixtures
- :: No need to remove old fixture; simply remove and discard the door frame of the existing fixture; place 2 adapter brackets (included) in the existing fixture; hinge this retrofit unit to the fixture; disconnect the ballast; connect the wires to the retrofit unit and close



LED DOOR FRAME TROFFER RETROFITS

CATALOG NO.	SIZES	WATTS	LUMENS	COLOR TEMP	DIMENSIONS
LRT-HL-2X2-40W-50K-D	2X2	40W	5200LM	5000K	23.90" x 23.90" x 2.64"
LRT-HL-2X2-40W-40K-D	2X2	40W	5200LM	4000K	23.90" x 23.90" x 2.64"
LRT-HL-2X2-40W-35K-D	2X2	40W	5200LM	3500K	23.90" x 23.90" x 2.64"
LRT-HL-2X4-50W-50K-D	2X4	50W	6500LM	5000K	47.75" x 23.90" x 2.64"
LRT-HL-2X4-50W-40K-D	2X4	50W	6500LM	4000K	47.75" x 23.90" x 2.64"
LRT-HL-2X4-50W-35K-D	2X4	50W	6500LM	3500K	47.75" x 23.90" x 2.64"