

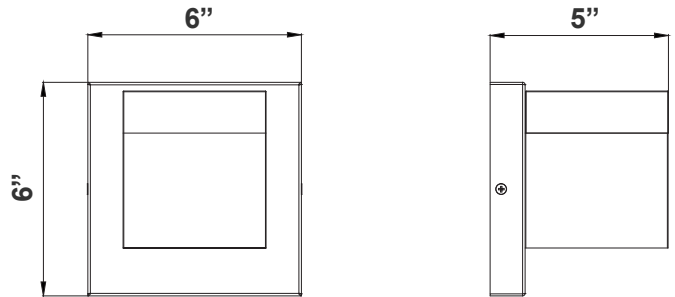
LRS SERIES Outdoor Lighting

LRS-J1S-MCT-C90-BR

WESTGATE
THE FUTURE IS HERE...AND IT'S QUITE BRIGHT!



Customer Name: _____
Project Name: _____
Note: _____ | Type: _____



6"(L) x 6"(W) x 5"(H)

LED Wall Pack with double-walled clear/frosted lens is ideal for general site lighting, loading docks, doorway, pathway and parking areas.

Features

- Back plate: Die-cast aluminum
- Polycarbonate Lens
- 7-Year Warranty
- Multi CCT Switch Is Inside Fixture

Technical Specifications

Electrical:

- Voltage: 120V AC 60Hz
- Wattage: 10W
- Power Factor: >0.90
- Efficacy: 70 LPW

Mechanical:

- Back plate: Die-Cast Aluminum with Mounting/Gasket Installed
- Polycarbonate Lens
- Operating Temperature: -4°F to 104°F
- IP44, Suitable For Wet Location
- 7-Year Warranty

Lighting:

- LED Type: SMD 3030
- Total Lumens: 700LM
- Color Temperatures: 3000K/ 4000K/ 5000K
- Color Rendering Index: CRI ≥ 90
- Beam Angle: 90° x 110°
- Rated life: 70,000 Hrs

Applications:

- LED Wall Pack With Double-Walled Clear/Frosted Lens Is Ideal For General Site Lighting, Loading Docks, Doorway, Pathway And Parking Areas.

Other Models:

- 10W | 700LM | LRS-J1S-MCT-C90-BK
- 10W | 700LM | LRS-J1S-MCT-C90-BN



Phone: (877) 805-2252 | Fax: (877) 805-2252
www.westgatemfg.com |



WG-ZY-29-2Z

Performance Table: LRS-J1S-MCT-C90-BR

MODEL NO.	Wattage	Voltage	Lumens	Color Temp.	BUG Rating	LPW
LRS-J1S-MCT-C90-BR	10W	120V	700LM	3000K 4000K 5000K	B0-U3-G1	70

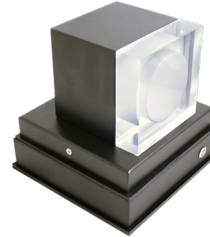
Sample Ordering

Model	Color Temp.	CRI	Housing
LRS	J1S	MCT	C90
			BR

Factory-Installed Options:

Blank = No Option For Accessories
OPT-EM-LRS-S = EXTERNAL BACK BOX

FACTORY-INSTALLED OPTIONS:



OPT-EM-LRS-S

Other Models:



LRS-J1S-MCT-C90-BK



LRS-J1S-MCT-C90-BN

