

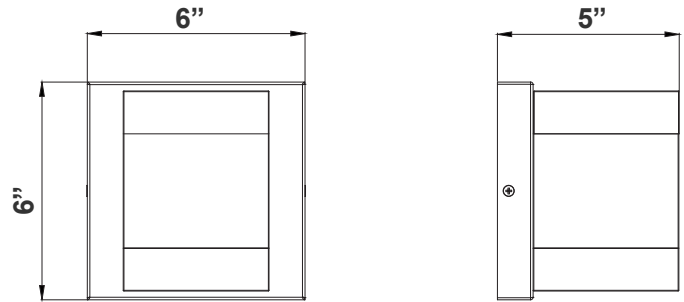
LRS-J-MCT-C90-BK

Customer Name: \_\_\_\_\_

Project Name: \_\_\_\_\_

Note: \_\_\_\_\_

Type: \_\_\_\_\_



6"(L) x 6"(W) x 5"(H)

LED Wall Pack with double-walled clear/frosted lens is ideal for general site lighting, loading docks, doorway, pathway and parking areas.

## Features

- Back plate: Die-cast aluminum
- Polycarbonate Lens
- 7-Year Warranty
- Multi CCT Switch is Inside Fixture

## Technical Specifications

### Electrical:

- Voltage: 120V AC 60Hz
- Wattage: 20W
- Power Factor: >0.90
- Efficacy: 70 LPW

### Mechanical:

- Back plate: Die-Cast Aluminum with Mounting/Gasket Installed
- Polycarbonate Lens
- Operating Temperature: -4°F to 104°F
- IP44, Suitable For Wet Location
- 7-Year Warranty

### Lighting:

- LED Type: SMD 3030
- Total Lumens: 1400LM
- Color Temperatures: 3000K/ 4000K/ 5000K
- Color Rendering Index: CRI ≥ 90
- Beam Angle: 90° x 110°
- Rated life: 70,000 Hrs

### Applications:

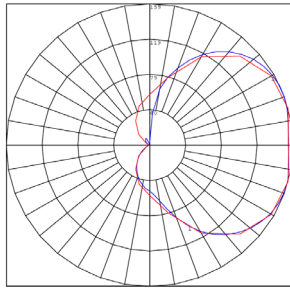
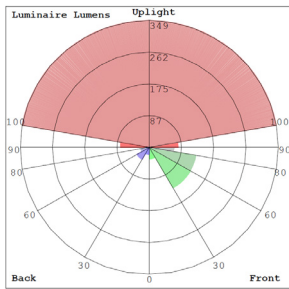
- LED Wall Pack With Double-Walled Clear/Frosted Lens Is Ideal For General Site Lighting, Loading Docks, Doorway, Pathway And Parking Areas.

## Other Models:

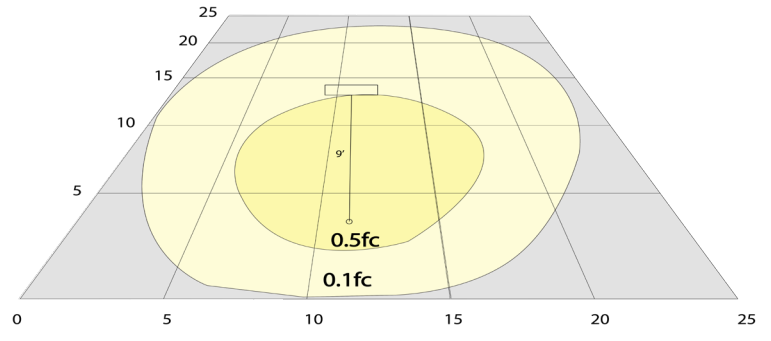
• 20W | 1400LM | LRS-J-MCT-C90-BR • 20W | 1400LM | LRS-J-MCT-C90-BN



## Photometrics: LRS-J-MCT-C90-BK



BUD Rating: B0-U3-G1



Area 25'x 25' Mounting Height: 9'

## Other Views:



Side View



Front View



Back View

## Performance Table: LRS-J-MCT-C90-BK

MODEL NO.	Wattage	Voltage	Lumens	Color Temp.	BUG Rating	LPW
LRS-J-MCT-C90-BK	20W	120V	1400LM	3000K 4000K 5000K	B0-U3-G1	70

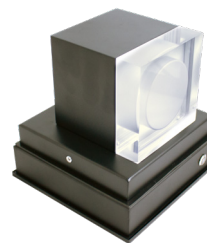
## Sample Ordering

Model	Color Temp.	CRI	Housing	
LRS	J	MCT	C90	BK

## Factory-Installed Options:

Blank = No Option For Accessories  
OPT-EM-LRS-S = EXTERNAL BACK BOX

## FACTORY-INSTALLED OPTIONS:



OPT-EM-LRS-S

