

# LED MIRROR

ITEM: LMIR-18-2028-MCT-DF, LMIR-18-2436-MCT-DF,  
LMIR-36-2028-MCT-DF, LMIR-36-2436-MCT-DF, LMIR-54-2840-MCT-DF

**WESTGATE**  
www.westgatemfg.com

Read instructions completely before installing the cabinet.

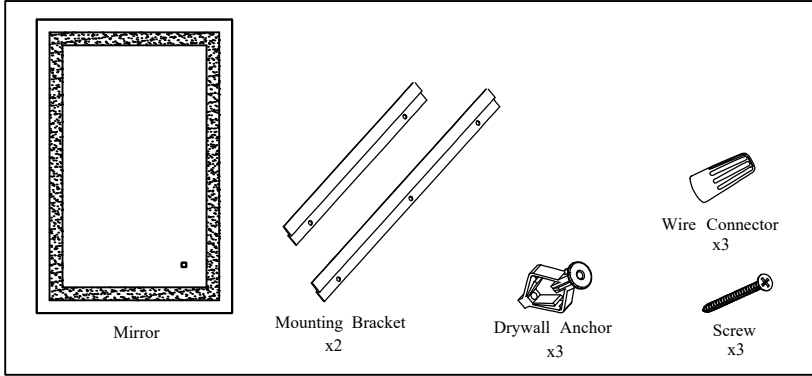
**▲WARNING:**

- If the colors of the household supply wires are different than what is referred to in the instructions below, a professional electrician should determine proper wiring.
- An electrical mirror must be wired to a 20 amp GFCI (Ground Fault Circuit Interruptor) when used in a bathroom and all other locations required by the National Electrical Code.

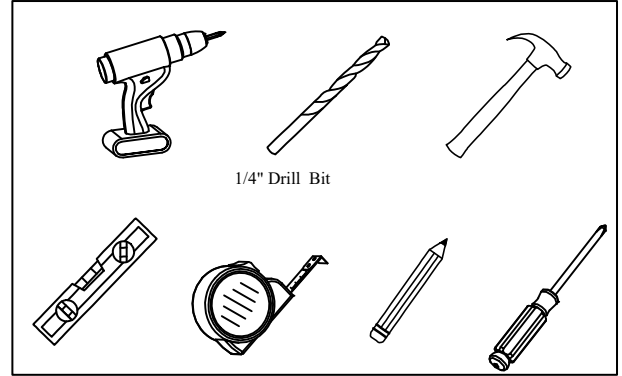
**CAUTION:**

- Rated for damp locations. Not suitable for outdoor use.
- Be sure the outlet box is properly grounded or that a green or bare (ground) wire is present.
- You may need a second person to support the mirror during installation.

## COMPONENTS

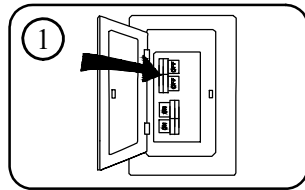


## TOOLS INQUIRED

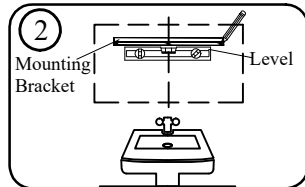


## INSTRUCTIONS

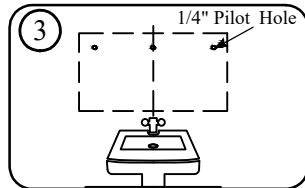
1. Turn off circuit breakers and wall switch to the mirror. **▲ DANGER:** Failure to disconnect power supply prior to installation may result in serious injury or death.



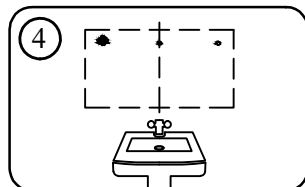
2. Use a mounting bracket and a level (not included) to mark the location of the pilot holes. Note: Use the longer mounting bracket for horizontal mount or use the shorter mounting bracket for vertical mount.



3. Use .25" diameter drill bit (not included) to drill the pilot holes for the drywall anchors.

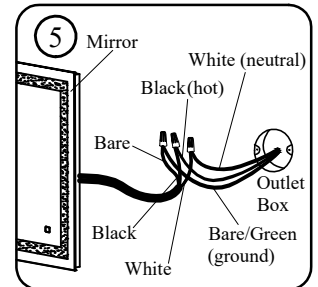


4. Use a hammer (not included) to tap the drywall anchors into the pilot holes.

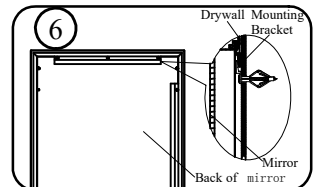


5. Secure all wire connections with wire connectors according to diagram and these steps:

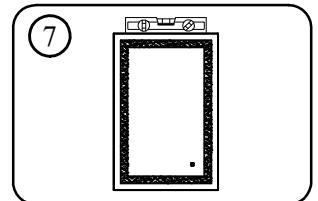
- Connect the Bare wire from the fixture to the Bare/Green (ground) supply wire.
  - Connect the Black wire from the fixture to the Black (hot) supply wire.
  - Connect the White wire from the fixture to the White (neutral) supply wire.
- Note: If household supply wires are different colors than referred to above, it is recommended a professional electrician determines the proper wiring.



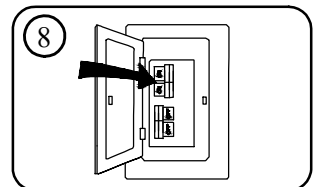
6. Lift the mirror onto the mounting bracket. Note: Ensure the bracket preassembled to the back of the mirror interlocks with the mounting bracket on the wall.



7. We recommend you to use level ruler to measure the mirror again after installation, ensuring the mirror is in level.



8. Turn on power supply at the breaker box and wall switch to the mirror.



## OPERATION INSTRUCTION TOUCH OF SWITCHES

Switch: short press the touch key to turn on or off the strip and relay at the same time

Color temperature adjustment: When the light is on, short press the touch key to switch the color temperature, each time the light is turned on to remember the color temperature and brightness of the last time the light was turned off. such as: 1 way bright → 2 way bright → 1+2 way bright → turn off the light → 1+2 way bright → 1 way bright → 2 way bright, in turn, cycle switching. After turning on the light, no operation within 4 seconds, then exit the switching color temperature mode, again short press directly off the light, the next time the light to retain the color temperature and brightness before turning off the light, such as: 1 way bright → 2 way bright (no operation within 4 seconds) → off the light → 2 way bright.

Dimming: when the light is on, long press the touch key to adjust the brightness, stepless non-cyclic adjustment of light brightness.