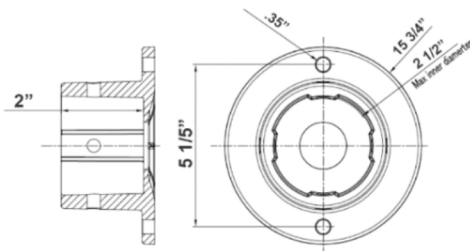


Post Disk Light with Bell Mount Pole Adapter



POLE
IS NOT INCLUDED



15 3/4" (D) X 2" (H)
Bracket Inside Diameter: 2 1/2"

Wattage

18W / 30W / 45W / 60W

Voltage Input

100-277V AC 50/60z

Efficacy

150 LM/W


Dimming

0-10V Dimming

Finish

Die-cast Aluminum Housing with Powder Coat Finish

Beam Angles

 Type V (150° x 150°)

Color Temperatures

 3000K  4000K  5000K

Features



Factory-Installed Options

Catalog No.	Fig.
GPX-18-60W-MCTP-BM	A

Watts	EM Options	Description	Photocell	Description	Paint	Sensor	Description
GPX	OPT-EM-0D2INT	INTERNAL	OPT-3MPC	ELECTRONIC	OPT-CLR-95(BK/GR/SR/WH)	OPT-SEN-3MR-3	PROGRAMMABLE MICROWAVE (BI-LEVEL)
						WEC-8RC	REMOTE CONTROL