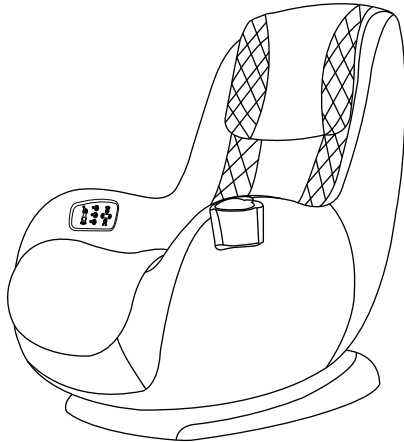


# User' s Mannual



Enjoy the moment,Seat your real self

MASSAGE CHAIR  
PLUG

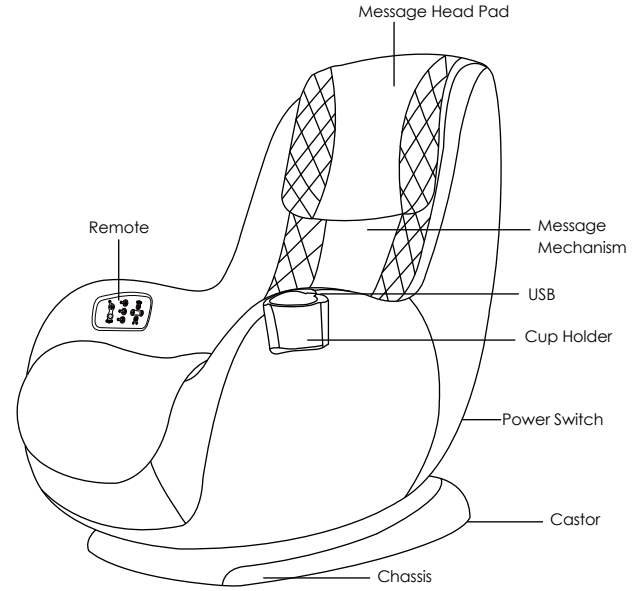
**WELCOME HOME!**



**Hello,  
there! Let me  
introduce myself  
to you.**

● ○ ○

**Mechanical Components Diagram**



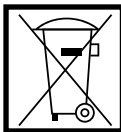
**Technical Data**

Product Model/Name	MC601 Massage
Rated voltage and power consumption	100-240VAC 50/60Hz(60W) Please ensure that the local alternating current (AC) voltage meets the voltage requirement specified in this manual.
Automatic Timing	15 minutes
Product Size	About 69 (width) * 97 (length) * 96 (height) cm
Net Weight	31.18KG
Gross Weight	37.74KG
Package Size	About 96 (38) (length) * 67 (width) * 96 (54) (height) cm

**The correct way to handle this product**

This symbol indicates that this product must not be disposed of with household waste in any EU country. In order to avoid any possible harm to the environment and human health, it should be recycled to increase the sustainability of the remaining available substances.

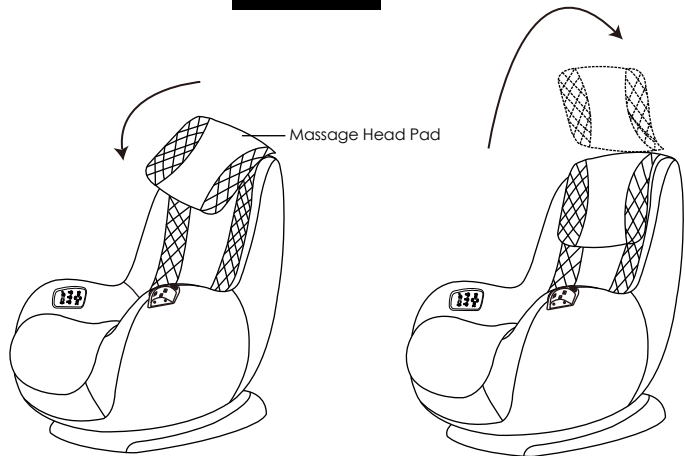
Return the used appliance, follow the return and recycling procedures, or contact the original purchaser. They can recycle the product for environmental safety.



**Feeling tired?  
Time to start getting  
rested!**



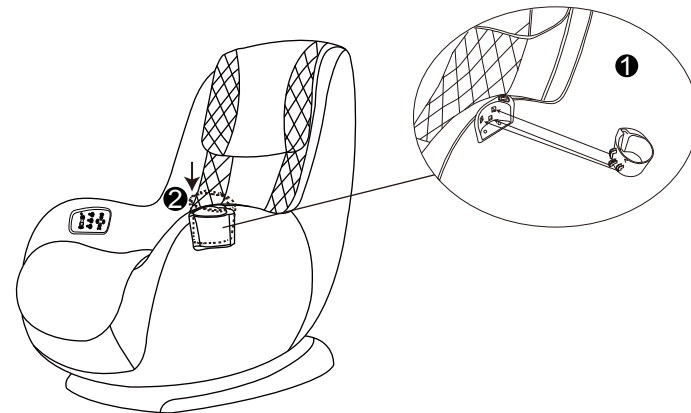
### Installation



1 Stick the massage head pad to the massage chair.

2 The massage head pad can be flipped up.

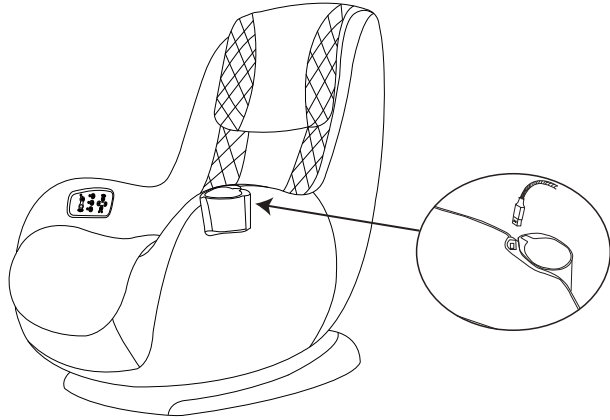
### Installation



1 Move the massage chair out of the bottom of the package and place the chair on the ground level as shown in the figure.

2 Take out the cup holder from work bin and align the three snap joint of cup holder with each rabbet. shown graph 1.

3 Press down the cup holder align with margin. Shown graph 2.

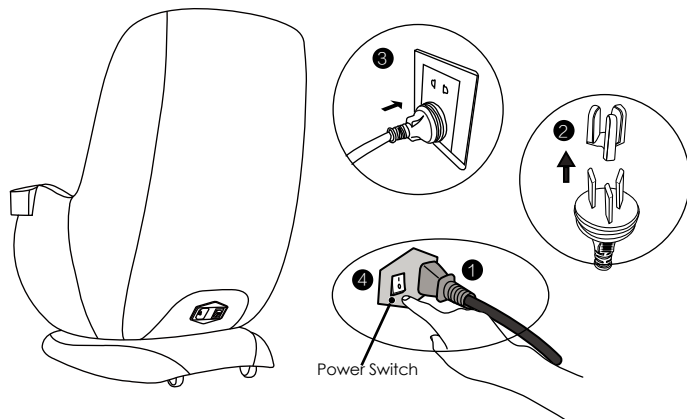


1 USB Charger

**Are you ready?  
Before you officially  
lie down, the key  
is to properly get me  
started**



## Preparation Before Massage



- ① Step 1: Plug the power cord into the massage chair jack.
- ② Step 2: Remove the power cord plug cover.
- ③ Step 3: Plug the power cord into the socket.
- ④ Step 4: Plug the power cord into the socket “ON” “OFF” .

Now everything  
is all set.  
Look at the remote!  
It's the massage  
show time~~~



## Function Illustration

### AUTO:

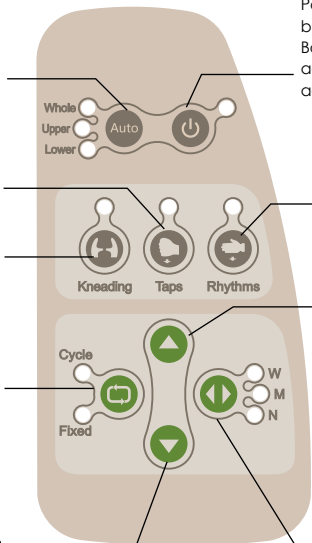
Cycling the three automatic modes of "full body", "cervical vertebra", and "waist and hip"

**Taps:** Press once to enter the manual mode, turn on the "tapping" mode, press again to turn off.

**Kneading:** Press once to enter the manual mode, turn on the "kneading" mode, press again to turn off.

**Cycle/fixed point:** Under manual mode, it is used to switch between cycling and fixed point massage. Turn off other functions and select "cycling," you will enter "Tuina" mode

**Down:** Enter the manual "fixed point" mode, press the button and hold to move the massage mechanism down, release the button or reach the lowest limit to stop.



**Power on/off:** Press the "Power" button to power on, the "Full Body" automatic mode is activated by default, press again to turn off and reset.

**Rhythms:** Press once to enter the manual mode, turn on the "knocking" mode, press again to turn off.

**Up:** Enter the manual "fixed point" mode, press the button and hold to move the massage mechanism up, release the button or reach the highest limit to stop.

**Wide/Medium/Narrow:** Under manual mode, when using the "Tapping", "Knocking" and "Tuina" functions, it is used to select the most suitable massage width.

**Automatic Mode:** Full Body/Cervical Vertebra/Waist and Hip

**Manual Mode:** Kneading/Tapping/Kneading + Tapping/Knocking/Tuina

**Note:** If the "Power" button is pressed and there is no response, please confirm whether the power cable at the bottom of the massage chair is powered on and the switch is turned on.



**If I haven't answered all of your questions with my previous instructions, please refer to the following guidelines.**



## Malfunction Guide

If you have problems using the product, please refer to the following tips and possible solutions. If the product is still in a fault condition or cannot be used, turn off the power and remove the plug, and contact the after-sales service.

Users should not disassemble or repair the product themselves. Damage to the product caused by self-disassembly or repair will void the product warranty, and the after-sales service is not responsible for any consequences caused by such situations.

Possible abnormal conditions	Methods
<ul style="list-style-type: none"> <li>The product cannot be started.</li> </ul>	<ul style="list-style-type: none"> <li>Please confirm that the main power switch and the power plug switch are [ON]</li> <li>Please confirm that the power plug is inserted into the socket.</li> <li>Please check if the output voltage of the power outlet is correct.</li> </ul>
<ul style="list-style-type: none"> <li>The roller and the back pad make friction noises.</li> <li>The motor sound is clearly audible during operation.</li> <li>Noticeable sound under the tapping and kneading mode.</li> </ul>	<ul style="list-style-type: none"> <li>These are noises caused by mechanical constructions and are not malfunctioning of internal parts.</li> <li>This happens during normal operation.</li> </ul>
<ul style="list-style-type: none"> <li>The remote controller can be operated during use, but the massage chair cannot.</li> </ul>	<ul style="list-style-type: none"> <li>If the temperature of the massage movement is too high after a long period of operation, the chair will automatically be in temperature protection. Please turn off the power and suspend the use in order for the internal heat dissipation for 30-50 minutes.</li> </ul>
<ul style="list-style-type: none"> <li>The remote controller cannot be operated during use, neither can the massage chair.</li> </ul>	<ul style="list-style-type: none"> <li>After the automatic timing function is activated, if time has elapsed, please press the button again to operate.</li> <li>Turn off the power, and turn the power back on to restart the massage chair.</li> </ul>

If the above methods are invalid, please refer to the Product Warranty Card, and contact our after-sales service.

**The following information is also important, but you can now lie here and read it through with comfort and relaxation**



### **STORAGE**

- Please wipe the dust off the product after each use.
- Please keep the product clean and away from excessive humidity
- If the massage chair is not used for a long time, please cover the product with a dust cover and remove the power plug from the socket.

### **⚠ Caution**

- To avoid discoloration of the seat cover fabric, please do not store the product under high temperature environment or direct sunlight
- To avoid discoloration, please do not touch place the product against wallpaper or vinyl material for a long time.

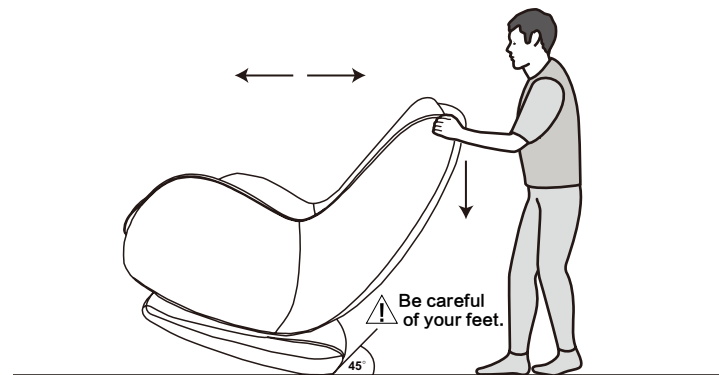
### **CLEANING AND MAINTENANCE**

- Before cleaning the product, please make sure that the main power switch is turned off and the power plug is removed from the socket.
- The product can be cleaned with clean, soft and dry cloth.
- Please do not wash the seat cover with a domestic washing machine to avoid deterioration.

### ⚠ Caution

- To avoid discoloration of the seat cover fabric, please do not use corrosive cleaning agents such as benzene or diluent to clean the product.
- Please do not iron the product's seat cover fabric
- Do not blow dry the sweat on the massage chair with a hair dryer.
- To avoid malfunction, under no circumstances should the remote control be cleaned with a damp cloth.

### Moving Massage Chair



#### How to Move:

- ① When moving the massage chair, first make sure that all the power cords are far away from the ground. Press the back pad to a certain angle, when the center of gravity falls on the rear pulley, hold the massage chair and push forward and backward by hand, then put the massage chair back to the normal angle (as shown in the figure).
- ② Please stay away from the pedestal when moving the chair, in order to prevent getting injured.

The following two pages are kind of wordy to be honest, but every single word is very essential, crucial, and critical. Are you ready? Let's get started!



### Important Safety Instructions

Please pay special attention to the following safety precautions before using the product:

If you have any of the following conditions, please consult your physi-

- ❶ You use a cardiac pacemaker or similar implantable medical device.
- ❷ Suffering from heart disease.
- ❸ Suffering from back strains.
- ❹ Your bones are fragile or damaged, especially the back bones.
- ❺ After surgery.
- ❻ During pregnancy or shortly after delivery.
- ❼ Suffering from malignant tumor.
- ❽ Osteoporosis patient.
- ❾ Suffering from skin infections.
- ❿ Being treated and adjuvanted.
- ⓫ There is an abnormality in the bones.
- ⓬ A disease or damage of the spine that has been caused by an accident or disease.

**Danger** — To reduce the risk of electric shock, please follow the instructions below:

- ❶ Please remove the power plug from the socket after use, or before cleaning the massage chair.

**Danger** — To reduce the risk of fire, burns, electric shock, or injury to others, please follow the instructions below.

- ❶ Please be sure to remove the power plug of the massage chair from the socket when it is unattended. In addition, always remove the power plug from the outlet before installing/removing parts when it is not in use.
- ❷ Do not use the massage chair when the following conditions occur: the power cord or power plug is damaged, not working, or fallen into the water. Please contact Miboo professionals or after-sales service for treatment, or otherwise the product quality maintenance guarantee will be invalid.
- ❸ Do not pull the power cord to move the massage chair or use the power cord as a grip.
- ❹ Do not insert or drop objects into any openings in the product.
- ❺ Do not use this product outdoors.
- ❻ Do not operate this product or in a place filled with oxygen or a spray product.
- ❼ To turn off the power, please turn off the all the operations and disconnect the power plug from the socket.
- ❽ Do not stand on the massage chair. Only sit on the massage chair cushion when using.

- ❾ When a person with physical, mental, or intellectual disabilities wants to use a massage chair, someone must be on the side to instruct and be responsible for their safety.
- ❿ Children are not allowed to use this product. Children should be taken care of to ensure that they do not use this product as a toy.
- ⓫ Do not apply any medical or cosmetic cream to the product or to your back before or during use.
- ⓬ To prevent the risk of electric shock, do not open product covers.
- ⓭ Do not damage, bend, pull, smash, bundle the power cord; the damaged power cord can cause fire and electric shock.
- ⓮ Do not use this product in the event of damage to the cover, or mechanical or electrical failure. Please contact the after-sales service.
- ⓯ Do not use this product in a humid and hot room or near a hot object (such as a heater, stove, etc.).
- ⓰ The product is recommended to be used for 30 minutes per day.

**Please keep the safety instructions in a safe place.  
This product is only suitable for household use.**

## Safety Instructions

### Operation Environment

- Do not use the product in an environment that is excessively humid or dusty, as this may result in electric shock or mechanical failure.
- Do not use the product at temperatures above 40 degrees Celsius.
- When using, please place the product on a flat and non-slip floor.
- The product is designed for household use and cannot be used for any commercial purposes.

### CAUTION

- This product is for indoor use only.
- If the product is moved from a low-temperature storage location to a warmer place, it often happens that the internal electronic components affect the normal operation of the machine due to the accumulation of moisture, or even cause mechanical failure. It is recommended to leave the product at normal room temperature for 1 hour before starting to use after removal.

## Safety Use Instructions

- To ensure safe and proper use of this product, please refer to the operation manual before use. To avoid reducing the effects of massage or causing injury, do not use this product with electric blankets or other devices that have a therapeutic effect.
- Do not use this product 1 hour before or after eating to avoid adverse effects.
- Do not stack heavy objects on the product to avoid accidental injury or mechanical failure.
- Do not use this product when your body is wet.
- Do not use this product when your hands are wet.
- Continued massage of the same part of the body for more than 5 minutes may cause excessive irritation and adverse effects.
- If you feel any discomfort during massage, please stop the operation immediately.
- This product is not intended for self-diagnosis or treatment. If diagnosis or treatment is required, it should be handled by a qualified medical professional.
- If you are receiving medication or medical conditions, please consult your doctor before using. Do not use this product if you feel unwell.

- During pregnancy or period, please consult your doctor and follow your doctor's advice.

### **Caution**

- Please avoid using this product after drinking alcohol.
- When you accidentally spill or pour liquid on the massage chair, immediately unplug the power cord from the outlet. Do not insert or remove the power plug when your hands are wet.
- Please do not damage the power cord or operate the product with the power cord damaged. This may result in accidental electric shock or mechanical failure. Please contact the service center for detailed inspection.

### **Conditions Unsuitable for the Use of the Product**

**If the following conditions occur, please turn off the switch and the power immediately and contact the service center.**

- Inadvertently spilling water on the product. This situation may result in electric shock.
- The massage chair cover is damaged and the internal parts are exposed.
- If abnormal or severe pain occurs during massage, stop the massage immediately and seek medical advice.

- If any malfunction or abnormal condition is detected during use, please stop the operation immediately.
- In the event of a current interruption during use, care should be taken to avoid injury to the user due to sudden power recovery.

### **Product Assembly and Repair**

- Do not attempt to disassemble or repair this product yourself. Touching internal parts may result in malfunction or accidental electric shock.
- If the supply cord is damaged, it must be replaced by a special cord or assembly available from the manufacturer or its service agent.

### **Power Supply Instructions**

- Please check that the voltage meets the product specifications. Please use only.
- Do not insert or remove the power plug when your hands are wet.
- When removing the power plug, hold the plug itself and do not pull on the power cord.
- Do not place the power cord under the product or any heavy objects.
- To avoid damage to the power cord, do not wrap it around the product.

- Do not use this product when the power cord is damaged.
- Do not use this product when the power outlet is loose.
- If the power cord is damaged, it must be handled by after-sales service or a dedicated person.
- When unplugging the power cord, turn off the power switch at the back of the massage chair person.

 **Caution**

- To prevent damage to the chassis, do not sit on the massage chair and push the back hard.

**The reason why I want you to pay attention to the above questions, is that it's my only wish to make you feel at ease and at peace.**





**In our time of  
romance together,  
we will provide you  
with loyal service.**



### Warranty Card

Thanking for choosing Miboo's product

In the course of future, you will enjoy the after-sales service provided by Anji Fuhe Furniture Co., Ltd.

- ① Within three months from the Date of Purchase, if the performance failure occurs, the product and the packaging must be kept intact and free of scratches, you can replace the same model of product (subject to inspection), human damage is not included.
- ② The product is under warranty for two years from the Date of Purchase with lifetime maintenance, products' accessories are not covered by the warranty(message mechanism and seat surface with one year warranty).
- ③ Warranty is valid only for normal use.
- ④ All man-made damage, self-disassembly, unsealing and any appearance damage due to improper use is not covered by the warranty. This card must be provided during the warranty period. If the card is not provided or the card is altered, the company has the right to void the warranty.

User Profile			
Name		Gender	Ager
Address			
Contact Number		Zipcode	
Purchase Place			
Purchase Price		Sales Order Number	
Description & Specification		Machine Number	
Sale's Agent Signature		User Signature	
Maintenance Records			
Date of Repair	Malfunction and Inspection Record	Repair Date	Maintenance Staff

**Warranty is only provided  
with this card. Please keep  
it in a safe place.**

**Anji Fuhe Furniture Co., Ltd.**

**Address:** FanTan Industrial Zone, Anji Economic  
Development Zone, Zhejiang

**Contact Number:** 0086-572-5239336

**Be kind to yourself,  
Rest Well!**



