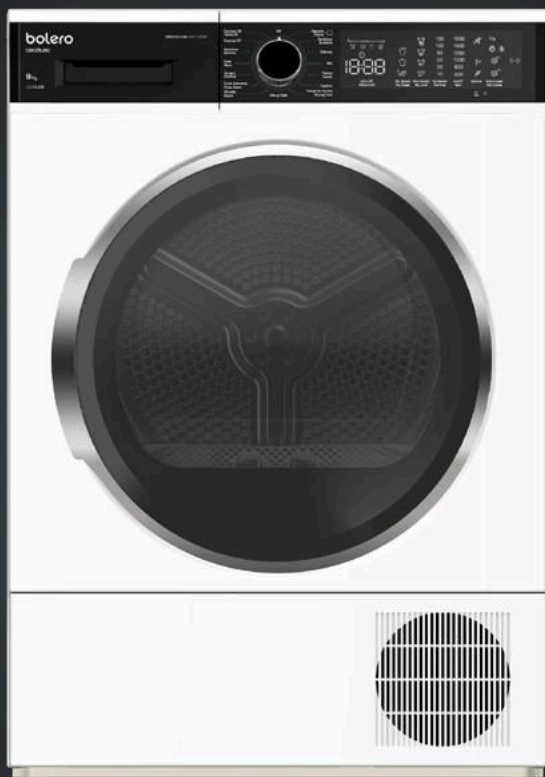


bolero

DRESSCODE DRY 9500 ION

Secadora /Dryer



cecotec

Manual de instrucciones
Instruction manual
Manuel d'instructions
Bedienungsanleitung
Manuale di istruzioni
Manual de instruções
Handleiding
Instrukcja obsługi
Návod k použití

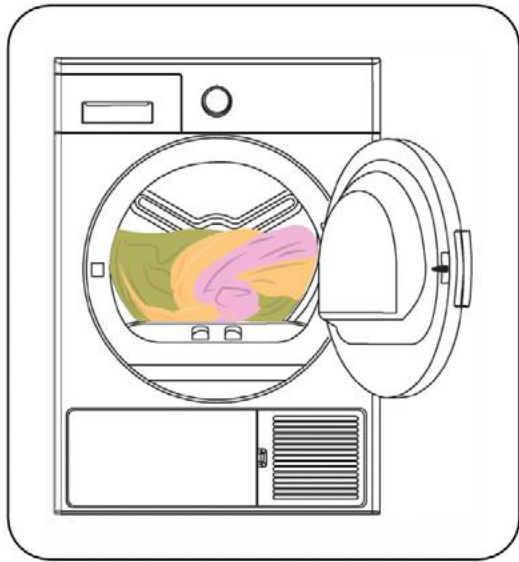


Fig. / Img. / Rys. / Obr. 3

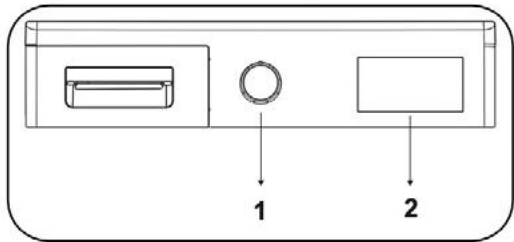


Fig. / Img. / Rys. / Obr. 4

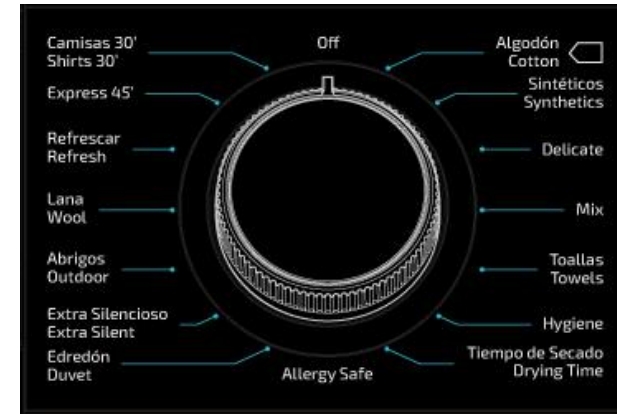


Fig. / Img. / Rys. / Obr.5

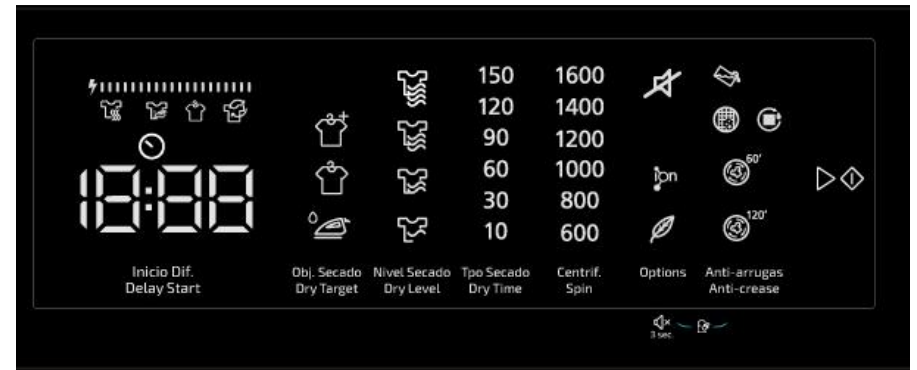


Fig. / Img. / Rys. / Obr.6

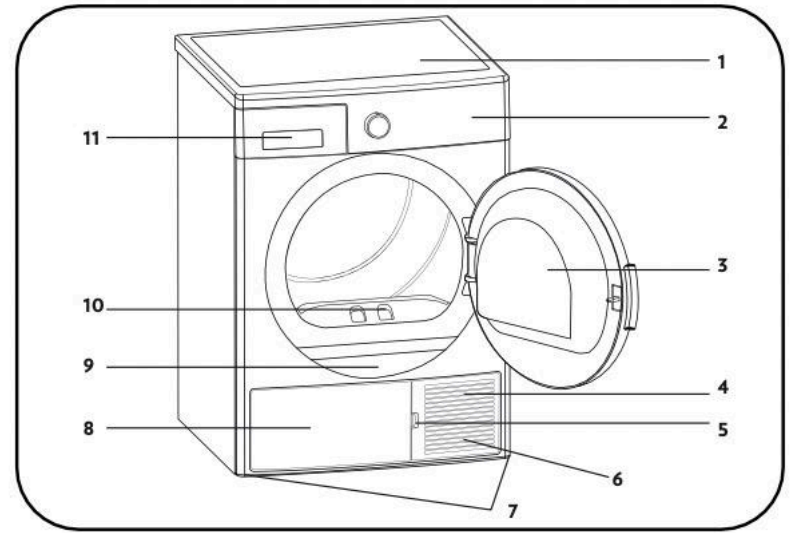


Fig. / Img. / Rys. / Obr. 1

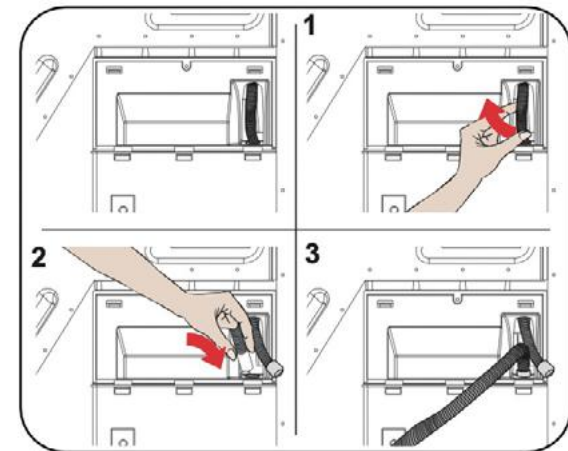


Fig. / Img. / Rys. / Obr. 2

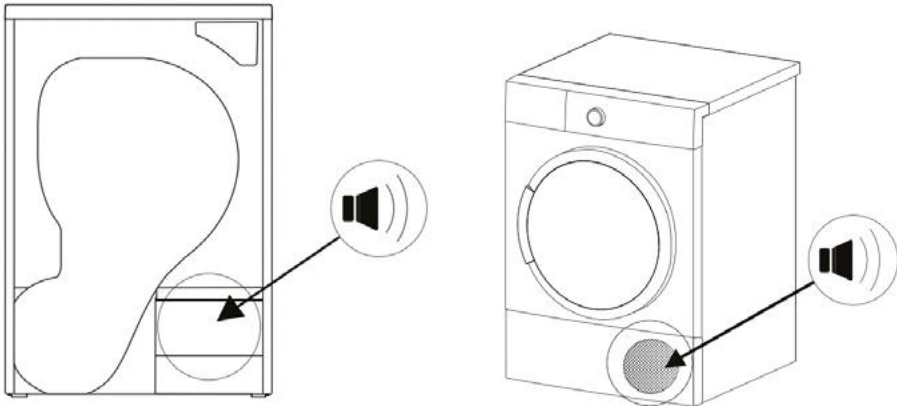


Fig. / Img. / Rys. / Obr. 7

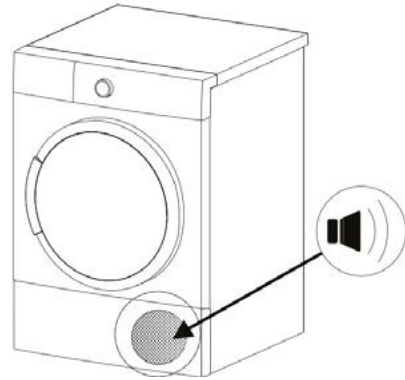


Fig. / Img. / Rys. / Obr. 8

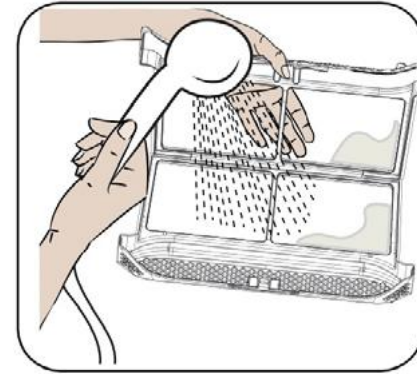


Fig. / Img. / Rys. / Obr. 10

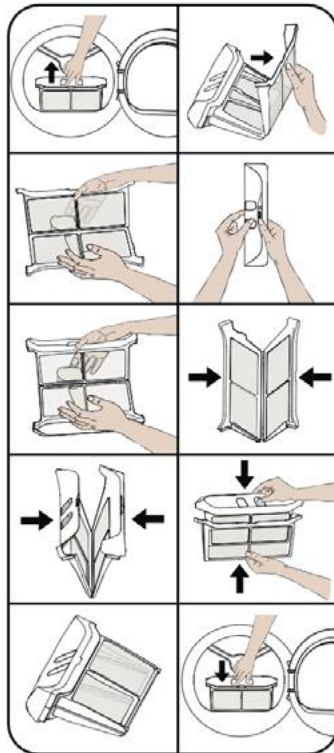


Fig. / Img. / Rys. / Obr. 9

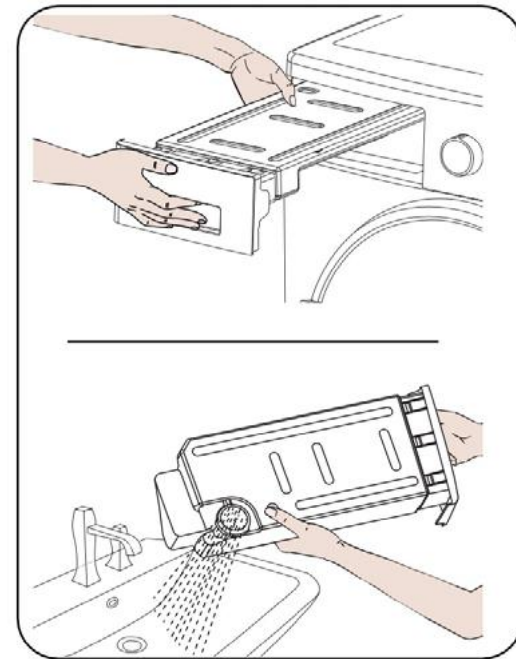


Fig. / Img. / Rys. / Obr. 11

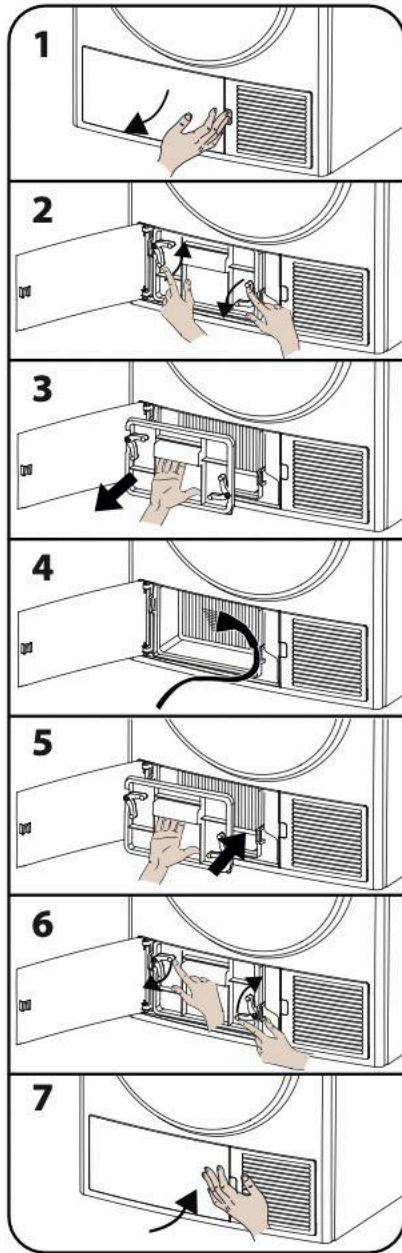


Fig. / Img. / Rys. / Obr. 12

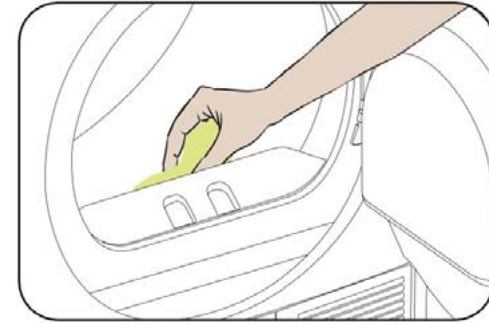


Fig. / Img. / Rys. / Obr. 13

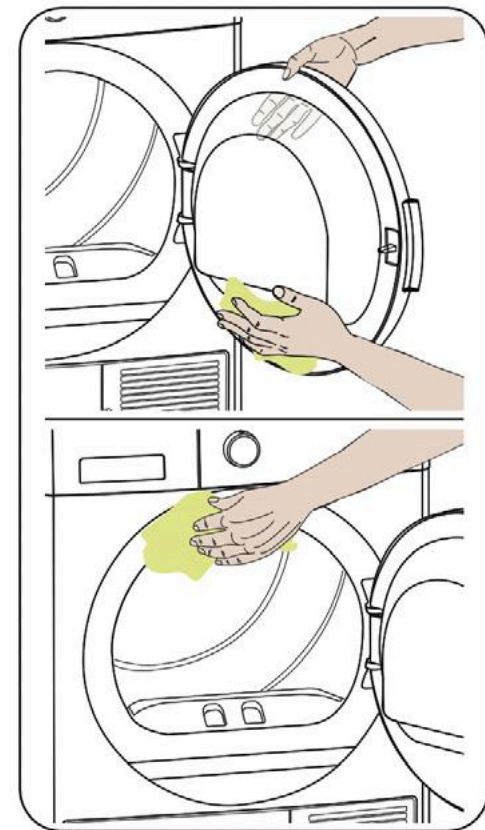


Fig. / Img. / Rys. / Obr. 14

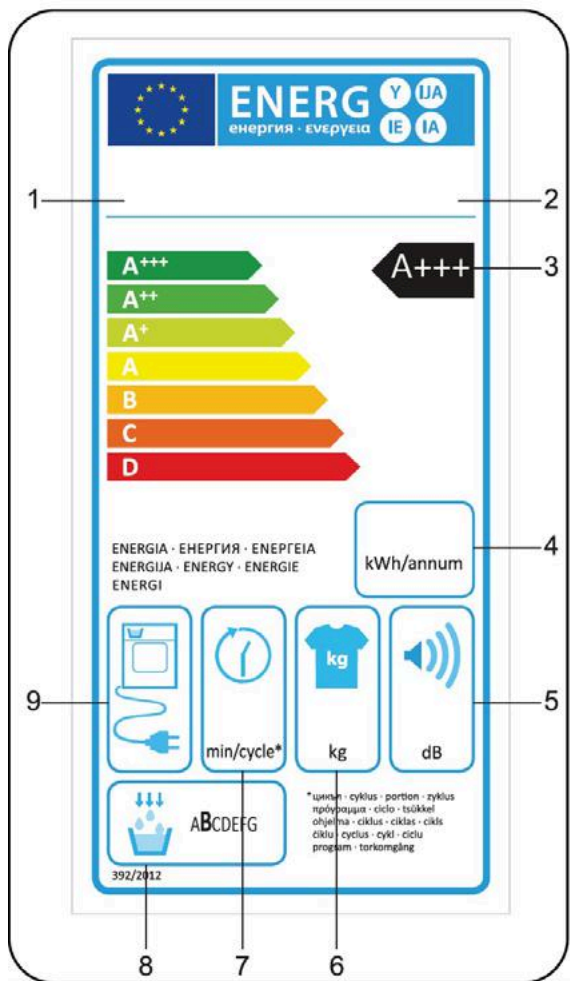


Fig. / Img. / Rys. / Obr. 15








INDEX

1. Parts and components	126
2. Before use	126
3. Installation	126
4. Laundry preparation	128
5. Operation	130
6. Cleaning and maintenance	140
7. Troubleshooting	141
8. Technical specifications	145
9. Environmental protection and packaging information	146
10. Description of the energy label and energy saving	147
11. Disposal of old electrical appliances	147
12. Technical support and warranty	147
13. Copyright	147

accesorio opcional. Póngase en contacto con el Servicio de Atención al Cliente de Cecotec para adquirirlo. Las instrucciones de montaje vienen con el kit de apilamiento.

Declaración de conformidad de la CE


- Declaramos que nuestros productos cumplen con las directivas, decisiones y normativas europeas pertinentes y con los requisitos enumerados en los estándares mencionados

Icon	Type	Meaning
	WARNING	Risk of serious injury or death
	RISK OF ELECTRIC SHOCK	Dangerous voltage
	FIRE	Warning: Risk of fire/flammable materials
	ATTENTION	Risk of injury or damage to property
	IMPORTANT/NOTE	Information on the correct operation of the system
	Read the instructions	
	Hot surface	

SAFETY INSTRUCTIONS


- This user manual contains information on safety and important instructions related to the use and maintenance of the device. Take all the time you need to read this user manual before using the device and keep it in case you need to check it in the future or for new users.
- Each dryer has been tested by a quality control before commercialisation, guaranteeing its conditions of use.
- The warnings contained in the manual do not cover all possible risks that may occur. Caution and care must be exercised during installation, maintenance and operation of the dryer.
- Comply at all times with the advice and warnings contained in this manual.

- Children under 3 years old must stay away, unless they are supervised.
- This dryer is suitable for indoor domestic use only. In case of commercial use, the warranty will be void.
- Do not install nor store the dryer outdoors.
- Use this product only for clothes whose care label specifies they are suitable for dryer.
- Cecotec is not responsible for damage caused by incorrect transport or use.
- Do not allow floor coverings to obstruct ventilation openings.
- Installation and repair of the appliance must only be carried out by Cecotec or an authorised repair agent.
- Cecotec is not liable for damage caused by repairs by unauthorised personnel.

 **WARNING:** Never spray or pour water inside the dryer to clean it. There is a risk of electric shock.



- Leave at least 3 cm of space between the side and rear panels of the product and above the product if the appliance is placed under a worktop.
- If assembly/disassembly of the installation under a worktop is necessary, this must be carried out by an authorised service technician.
- Before installation, check the product for visible damage. Never install nor operate a damaged product.
- Do not let any animal near the dryer.
- Fabric softeners or similar products should be used according to the manufacturer instructions.
- Remove all the objects from the pockets: lighters, matches, etc.
- The appliance should not be installed behind a lockable door, a sliding door or a hinged door on the opposite side of

the dryer door in such a way as to prevent the dryer door from being fully opened.

 **WARNING:** Keep the ventilation openings in the housing of the appliance or in the built-in structure free of obstructions.

- Before contacting the local authorised service provider for the installation of the dryer, check the information in the user manual to make sure that the electrical installation and water connection are available. If they are not, you can call a qualified electrician and plumber to make the necessary adjustments.
- The preparation of the dryer location is the responsibility of the customer, as well as the electrical and sewage installation. Before installation, check the dryer for any damage. If it is damaged, do not install it. Damaged products may be a risk for your health.
- Install the dryer on a flat and stable surface.
- Run the dryer in an environment free from dust with good air ventilation.
- You should not reduce the space between the dryer and the floor with objects like carpets, wood or cloths.
- Do not block the ventilation grids on the base of the dryer.
- Once the dryer is installed, the connections must remain intact. When installing the dryer, make sure that the rear surface is not resting on something (a tap, a socket, etc.).
- The operating temperature of the dryer ranges from 5°C to 35°C. When operating at temperatures outside this range, the operation may be adversely affected and the product may be damaged.
- Be careful when transporting the product, as it is really heavy. Always wear safety gloves.
- Always install the product against a wall.

- The rear part of the product must be installed against a wall.
- If the product is placed on a stable surface, use a spirit level to check it is completely stable. If it is not stable enough, adjust the feet until it is firm. Repeat the same process every time you relocate the product.
- Do not place the dryer on the power cord.
- Use the provided hoses, do not reuse old hoses.
- Do not misuse it, do not stand, sit or place any heavy object on the door of the dryer.
- Do not try to open the door while the dryer is in operation, do not leave the door open, as it may cause accidents.
- Do not force the controls.
- The dryer must only be used for its intended purpose as described in this manual.
- Do not use the tumble dryer if any parts are missing or broken or if any protections or panel have been removed.
- This section contains safety instructions to help protect you against the risk of personal injury or property damage. Failure to follow these instructions will invalidate the guarantee.
- Read these instructions carefully before assembling or using the dishwasher, as they contain important information that will help you get the best out of your equipment.
- It is your responsibility to make sure every user is informed about the warnings and precautions stated in this instruction manual.
- The appliance should not be powered by an external switching device, such as a timer. It should not be connected to a circuit that is regularly switched on and off by some kind of drive.

- Do not touch the plug with your hands wet. Always pull the plug to disconnect the product, otherwise you may suffer an electric shock.
- Connect the dryer to a grounded, fuse-protected outlet. The installation of an earthed socket must be carried out by a qualified electrician. Cecotec is not responsible for any damage or loss resulting from the use of the dryer without grounding as required by local regulations.
- The voltage and admitted fuse protection are indicated on the type label. (For the type label, see General information).
- The voltage and frequency values indicated on the type label must be the same as those in your house.
- Unplug the dryer if it will not be used for a considerable period of time and during installation, maintenance, cleaning and repair work. Otherwise, it could damage the dryer.
- The socket must be accessible at all times after the installation.
- For safety reasons, it is recommended to disconnect the plug after the programme has finished.
- Check the power cord regularly for visible damage.
-  A damaged cord/plug may cause a fire or electric shock. When damaged, they must be replaced. This should only be carried out by qualified personnel, Cecotec or the after-sales service, in order to avoid danger.
-  To prevent any risk of fire or electric shock, do not use extension cords, power strips or adapters to connect the dryer to the mains.

Children safety

- This appliance can be used by children aged 8 and above, and persons with reduced physical, sensory or mental

capabilities or lack of experience and knowledge, as long as they have been given supervision or instruction concerning the use of the appliance in a safe way and understand the hazards involved. Children should not play with the appliance. Cleaning and user maintenance of this appliance should not be carried out by children without supervision.

- Do not let unattended children come near the machine.
- Children could get trapped inside the device, which could lead to death.
- Do not allow children to touch the machine while it is running. The surface becomes extremely hot and could cause damage in the skin.
- Keep the packaging material out of the reach of children.
- If detergent or cleaning materials are swallowed or come into contact with your skin or eyes, poisoning and irritation may occur.
- Keep the cleaning material out of the reach of children. Electric products are dangerous for children.
- Keep children away from the machine while in use.
- To prevent children from interrupting the drying cycle, you can activate the child lock to prevent any changes to the programme in progress.
- Do not allow children to seat or climb on or inside the product.


Product safety

 Due to the risk of fire, NEVER introduce in the dryer the following garments:


- Do not introduce unwashed clothes in the dryer.
- Garments that have been stained with substances such as cooking oil, acetone, alcohol, petrol, paraffin, stain removers, turpentine, waxes or wax removers should be

washed with hot water and an extra amount of detergent before drying in the dryer.


- Cleaning cloths and tablecloths that have residues of flammable cleaning products, acetone, gases, petroleum, stain removers, turpentine, waxes, wax removers or chemicals.
- Garments with traces of hairspray, nail polish remover and similar substances.
- Garments that have been used for cleaning with industrial chemicals (as in chemical cleaning).
- Garments containing parts or accessories with any type of foam, sponge, rubber or rubber-like material, such as latex foam sponges, shower caps, waterproof fabrics, custom-made clothing and foam pillows.
- Garments with padding or damaged parts (pillows or jackets). Foam released from these garments could cause a fire during the drying process.
- Using the dryer in environments containing flour or coal dust may cause an explosion.


 **ATTENTION:** Underwear with metal reinforcements should not be put in the dryer. Damage to the dryer may occur if the metal reinforcements become detached or lost during drying.


FIRE: R290

 Risk of fire and damage! This product contains environmentally safe but flammable R290 gas. Keep open flames and sources of fire away from the product.

Correct use

 **ATTENTION:** Never stop the dryer before the end of the drying cycle unless all items are quickly removed and spread out to dissipate the heat.

 **ATTENTION:** Make sure that no animals enter the dryer. Check the interior of the dryer before use.


 **ATTENTION:** Overheating of the laundry inside the dryer may occur if you cancel the programme or in case of an electrical failure during the operation of the dryer. This concentration of heat can cause combustion, so be sure to activate the ventilation programme to cool it down or quickly remove the laundry from the dryer to hang it out to dissipate the heat.

Use the dryer only for domestic use and for drying fabrics labelled as suitable for drying. Any use other than that for which it is intended is prohibited.

In case of commercial use, the warranty will be void.

This appliance is intended for indoor use only and should be placed on a flat and stable surface.


Do not lean or sit on the dryer door. The dryer could tip over. In order to maintain a temperature that does not damage the laundry (e.g. to prevent the laundry from burning), a cooling process is started after the drying process. The programme ends after it. Always remove the laundry immediately at the end of the programme.

 **ATTENTION:** Never use the dryer without the lint filter or with a damaged lint filter.

You must clean the lint filters after every use as indicated in the 'Lint filter cleaning' section.


The lint filters must be dried every time you clean them with water. Wet filters can cause a malfunction during the drying process.


You should not allow lint to accumulate around the dryer (not applicable to those appliances for outdoor ventilation of the building).

 **IMPORTANT:** You should not reduce the space between the dryer and the floor with objects such as carpets,

wood or panelling, otherwise it will not be possible to ensure sufficient air inlet to the appliance.

Do not install the dryer in rooms with a risk of freezing. Freezing temperatures adversely affect the performance of the dryer. Condensed water freezing in the pump and hose can cause damage.

 **ATTENTION:** You cannot install a washing machine on the dryer. Pay attention to the following warnings to place the dryer on the washing machine.

 **ATTENTION:** The dryer can only be placed on washing machines with the same or higher capacity.

To use the dryer on top of a washing machine, you must place a fixing element between the two products. The fixing element must be placed by an authorised service provider. When the dryer is placed on top of a washing machine, the total weight of the two products can reach almost 150 kg (loaded). Place the products on a stable floor with this load capacity.








Dryer (depth)	Washing machine				
	37-41 cm	42-45 cm	46-49 cm	50-56 cm	57-63 cm
52.5 cm	x	√	√	√	√
56 cm	X	x	√	√	√
61 cm	x	x	x	√	√
64 cm	x	x	x	x	√

(For more complete information, see '8. Technical specifications').

- To place the dryer on top of the washing machine, it is necessary to use a special stacking kit as an optional accessory. Contact the Cecotec Customer Service to purchase one. The assembly instructions are included with the stacking kit.

EC Declaration of Conformity

- We declare that our products comply with the relevant European directives, decisions and regulations and with the requirements listed in the standards mentioned above.

Icône	Type	Signification
	AVERTISSEMENT	Risque de blessure grave ou de mort
	RISQUE DE DÉCHARGE ÉLECTRIQUE	Voltage dangereux
	INCENDIE	Avertissement ; Risque d'incendie / matériaux inflammables
	Attention	Risque de blessures ou de dommages matériels
	IMPORTANT/NOTE	Informations sur le bon fonctionnement du système
	Lisez les instructions	
	Surface chaude	

INSTRUCTIONS DE SÉCURITÉ

- Le présent manuel d'utilisation contient des informations importantes de sécurité et des instructions relatives au fonctionnement et à l'entretien de votre appareil. Veuillez prendre le temps de lire ce manuel avant d'utiliser votre appareil et conservez-le pour de futures références ou pour tout nouvel utilisateur.
- Chaque sèche-linge a été testé par un contrôle de qualité avant d'être commercialisé, garantissant ainsi ses conditions d'utilisation.
- Les avertissements figurant dans ce manuel ne couvrent pas tous les risques possibles qui peuvent survenir. Faites bien attention lors de l'installation, de l'entretien et du fonctionnement du sèche-linge.

1. PARTS AND COMPONENTS

Fig. 1

1. Upper tray
2. Control panel
3. Loading door
4. Base
5. Base opening slot
6. Ventilation grids
7. Adjustable feet
8. Base cover
9. Type plate
10. Lint filter
11. Drawer cover

The graphics in this manual are schematic representations and may not exactly match the product.

Box contents

- Bolero DressCode Dry 9500 Ion dryer
- Drain hose
- Instruction manual

2. BEFORE USE

- This product includes a package designed to protect it during transport. Unpack the appliance and keep the original packaging and materials in a safe place. It will help prevent any damage if the product needs to be transported in the future. In case the original packaging is disposed of, make sure all packaging materials are recycled accordingly.
- Make sure all parts and components are included and in good conditions. If there is any piece missing or in bad conditions, contact the Technical Support Service of Cecotec immediately.

3. INSTALLATION

Connection of the water outlet (with optional drain hose)

In appliances with a heat pump unit, water accumulates in the water tank during the drying process. You must empty the water accumulated in every drying process. Instead of

periodically emptying the water tank, you can also use the water drain hose supplied with the product to drain the water directly from the exterior.

Drain hose connection

Fig. 2

1. Remove the end of the hose located in the rear of the dryer. Do not use any tool to remove the hose.
2. Place an end of the drain hose, provided with the product, in the hole from which you removed the hose.
3. Adjust the other end of the hose directly to the water supply or sink.



ATTENTION: You must place the hose so it cannot move. If the hose slips out during the water draining, your house could be flooded.



IMPORTANT: The drain hose must have a maximum length of 80 cm.
IMPORTANT: The drain hose between the water supply and the product must not be twisted, bent or crushed.

Adjusting the feet

For the dryer to operate with as little noise and vibration as possible, it must be stable and balanced on its feet. Adjust the feet to make sure the product is balanced.




Turn the feet to the right and left until the dryer is level and stable.
IMPORTANT: Never remove the adjustable feet.

Electric connection



ATTENTION: There is a risk of fire and electric shock.
- The current of the dryer is set to 220-240 V and 50 Hz.

- The power cord of the dryer is equipped with a special plug. This plug must be connected to a grounded outlet protected by a 16 ampere fuse, as indicated on the type label. The current rating of the power line where the socket is connected must also be 16 amperes. Seek the advice of a qualified electrician if you do not have such a socket or fuse.
- Cecotec is not responsible for any damage caused by ungrounded use.
-  **IMPORTANT:** Operating your machine at low voltage values shortens the lifetime of the machine and reduces its performance.
 - Always use the plug provided with the dryer.
- Do not modify the plug provided with the device if it does not match the power socket.

















Installation under a worktop

- Leave at least 3 cm of space between the side and rear panels of the product and above the product if the appliance is placed under a worktop.
- If assembly/disassembly of the system under a worktop is necessary, this must be carried out by an authorised service technician.


4. LAUNDRY PREPARATION

Classification of garments for drying

- Follow the drying instructions on the garment labels. Insert only items that have the symbol indicating that they can be dried in the dryer.
- Do not operate the product with a load quantity or type of garment other than those indicated in the section 'Load capacity'.

			
Tumble dry	Permanent press	Delicate/gentle	Do not tumble
			
Do not dry	Do not dry clean	Any heat	High heat
			
Medium heat	Low heat	No heat	Hang to dry
			
Dry flat	Drip dry	Dry in shade	Dry clean

- Do not dry thin, multilayer or thick fabrics together, as they do not take the same time to dry.
- For this reason, dry garments with the same structure and the same type of fabric together. This way you can achieve even drying. If you think that the laundry is still wet, you can select a time programme for additional drying.

 **IMPORTANT:** Delicate, embroidered, woolen or silk textiles, garments made of delicate and expensive fabrics, airtight garments and tulle curtains are not suitable for tumble drying.

Laundry preparation for drying



Risk of fire and explosion

Remove all the objects from the pockets: lighters, matches, etc.



ATTENTION: Damage to the dryer drum and fabrics may occur.

- Garments may roll up during the washing process.
- Separate them before introducing them in the dryer.
- Remove all items from the laundry pockets and consider the following:
 - Tie belts, apron strings, etc. or use a laundry bag.
 - Close the zips, buckles and fasteners and fasten the buttons on the covers.
 - For better drying, sort the laundry according to the fabric and drying programme.
 - Remove fasteners and metal parts from garments.
- Woven products such as T-shirts or knitted garments normally shrink during the first drying. Select a programme that protects them.
- Do not overdry synthetics. This will cause creases.
- When washing laundry to be dried later, adjust the amount of fabric softener according to the washing machine manufacturer information.
- For an efficient use to save energy and money, it is recommended to drain the laundry in the washing machine by spin-drying before drying.

Load capacity

Fig. 3

Follow the instructions in 'Programme and consumption table'. Do not load the product with more items than the capacity values in the table.



IMPORTANT: It is not recommended to load the dryer with more laundry than shown in the illustration. If the dryer is overloaded, its drying function will be reduced and both the dryer and the laundry may be damaged.

Laundry	Dry weight (g)
Bed linen (double)	725
Pillows	240
Bath towels	700
Hand towels	225
Shirts	190
Cotton shirts	200
Jeans	650

Trousers with gabardine fabric	400
T-shirts	120

5. OPERATION

Control panel

Fig. 4

1. Programme selector
2. Electronic indicator and additional functions

Programme selector






Use the programme selector knob to select the desired drying programme.





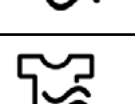


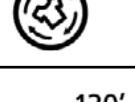


Fig. 5

Electronic indicator and additional functions

Fig. 6

Display symbols

Water tank warning indicator	
Lint filter cleaning warning indicator	
Heat exchanger cleaning warning indicator	
Extra dry	
Cupboard dry	

Iron dry	
Drying level 1	
Drying level 2	
Drying level 3	
Drying level 4	
Delay start	
Anti-crease 60'	
Anti-crease 120'	
Delicate dry	
Buzzer button	

Start/Pause	
Drying step display	
Dry	
Iron dry	
Cupboard dry	
End	
The electronic display shows the drying steps throughout the programme. Every time a programme step is started, the light of the corresponding drying step will light up. When the drying step is completed, the light of the corresponding drying step will turn off.	
The energy consumption display shows the energy consumption of the selected programme. The larger the value shown on the display, the higher the energy consumption. The energy consumption level increases or decreases depending on the type of fabric, the length of the selected programme, the dry level and the spin speed.	

Programme and consumption table

Press the Start/Pause button to start the programme. The Start/Pause LED indicates that the programme has started and the dry LED will light up.

Programme	Load (kg)	Spin speed	Approx. amount of remaining moisture	Length (minutes)
Cotton	9	1000	60%	205
Synthetics	4.5	800	40%	84
Delicate	2	600	50%	58
Mix	4	1000	60%	112
Towels	3	1000	60%	92
Hygiene	3	1000	60%	80
Drying Time	-	-	-	-
Allergy Safe	3	1000	60%	80
Duvet	2.5	800	60%	109
Extra Silent	9	1000	60%	244
Outdoor	2	800	40%	63
Wool	1.5	600	50%	160
Refresh	-	-	-	10
Express 45'	1	1200	50%	45
Shirts 30'	0.5	1200	50%	30

Energy consumption values				
Programme	Load (kg)	Spin speed	Approx. amount of remaining moisture	Energy consumption values (kWh)
Cotton - Cupboard dry	9	1000	60%	1,57
Cotton - Iron dry	9	1000	60%	1,15
Synthetics - Cupboard dry	4.5	800	40%	0,64
Power consumption in "off mode" P _o (W)				0.5
Power consumption in "on mode" P _L (W)				1

- The Cotton - Cupboard dry programme is the standard drying programme and is used at full or half load. It is referred to in the information on labels of garments and items. This programme is the most efficient for drying normal damp cotton clothes.

*Standard energy classification programme (EN 61121:2013)

- All values in the table are set in accordance with EN 61121:2013. The consumption values may vary from the values in the table depending on the type of fabric, spin speed, environmental conditions and current values.

Additional functions

The table below summarises the options that can be selected in the programmes.

Option	Description
Dry Target	Select the suitable dry target for your clothes. Select Extra dry for thick, multi-layered laundry that takes a long time to dry. Select Cupboard dry for normal single-layer laundry. Select Iron dry for clothes that you wish to leave damp, ready for ironing.
Dry Level	The moisture level after drying can be increased in 3 other levels in addition to the standard setting. This ensures that the laundry is drier. The levels that can be selected apart from the standard setting (Level 1) are 2 (low), 3 (medium) and 4 (high). After the selection, the corresponding dry level light will light up.
Delicate dry*	Delicate fabrics dry over a longer period of time at low temperatures.
Delay Start	You can delay the programme start from 1 to 23 hours. Press the Start/Pause button to activate the delay start time. When the time ends, the selected programme will start automatically. During the delay time, you can activate/deactivate options which are compatible with the selected programme. If you hold down the Delay start button, the delay start will change continuously.
Buzzer warning mute	The dryer will beep when you press the buttons, when you turn the programme selector and when the programme finishes. To cancel the warnings, hold down the Options and Anti-crease buttons for 3 seconds. When you press these buttons, you will hear a warning that the option has been activated and the indicated warnings will be cancelled.

Dry Time	If you turn the programmes selector knob to the Drying Time position, you can press the Dry Time option button to select it and then press Start/Pause to start the programme.
Child lock	There is a child lock option to prevent any changes in the programme when pressing the buttons during the programme. To activate the child lock function, the user must hold down the Options and Anti-crease buttons at once for 3 seconds. When the child lock is active, the other buttons are disabled. The child lock is not automatically deactivated at the end of the programme. To deactivate the child lock at the end of the programme, turn the programme selection knob to the Off position. Next, turn the programme selection knob to the first position. The child lock will still be active. To deactivate the child lock function, the user must hold down the Options and Anti-crease buttons at once for 3 seconds. When activating/deactivating the child lock, the display will show «CL» for 2 seconds and then it will turn off; and you will hear the warning. Warning: when the appliance is running or the child lock is active, when you turn the programme selector knob, you will hear an audible warning and the display will show «CL» for 2 seconds and then it will turn off. If you turn the programme selection knob, you will hear a warning. Even if you set the programme selector to another programme, the previous selected programme will continue running. To select a new programme, you need to deactivate the child lock and then set the programme selection knob.
Ion*	Thanks to the negative ions technology, allergens, smoke residues and electrostatic charges that accumulate during the drying process are purified. This ensures that the laundry can be ironed easily, smells good and is hygienic.
Anti-crease*	If you do not open the door when the programme ends, the Anti-crease option will be active for 60 minutes. When selecting the Anti-crease option, it will be active for 120 minutes.
Spin	Set the spin speed to dry the laundry. This ensures that the estimated drying time is more accurately displayed.

Starting a programme

The Start/Pause LED will flash during the programme selection. Press the Start/Pause button to start the programme. The Start/Pause LED indicates that the programme has started and the dry LED will light up.

	Description
Cotton	This programme is suitable for drying cotton linen, including sheets, pillowcases, pyjamas, underwear, tablecloths, etc.
Synthetics	This programme is used to dry synthetic fabrics such as shirts, T-shirts and blouses at a lower temperature than the Cotton programme.
Delicate	This programme is used to dry light clothes such as shirts, blouses and silk garments at low temperature to be worn on the spot.
Mix	This programme dries cotton and synthetic fabrics that do not fade at once, ready to be used immediately.
Towels	This programme is suitable for drying thick cotton laundry such as towels, bathrobes, etc.
Hygiene	This programme is suitable for textiles that must meet hygiene requirements.
Drying Time	To achieve the required drying level at low temperature, you can use the set programmes from 10 to 150 minutes. Whatever the drying level, the programme will stop at the desired time.
Allergy Safe	This programme provides hygienic drying at a low temperature for delicate baby laundry.
Duvet	This programme is used to dry single feather, down or synthetic duvets.
Extra Silent	This programme operates the dryer in a way that reduces environmental noise. The noise level decreases significantly compared to the Cotton - Cupboard dry programme.
Outdoor	This programme is suitable for outerwear, waterproof jackets, jackets with inner insulation, etc.
Wool	Use this programme to gently dry woollen laundry, washed as indicated in the washing instructions. Remove the laundry at the end of the drying cycle. Do not use this programme to dry acrylic items.
Refresh	The drying time can be selected between 10 and 150 minutes without using hot air. This will refresh the laundry and remove unpleasant smells.
Express 45'	1 kg of synthetic laundry spun at high speed will dry in 45 minutes.
Shirts 30'	After 30 minutes, 2 or 3 shirts will be ready to be ironed.



IMPORTANT: Do not open the loading door during the programme operation. If you have to open the door, do not keep it open for too long.

Energy save mode

- If you do not press any button for 15 minutes during the programme selection step, the dryer will enter the energy save mode to reduce the power consumption. All the display will turn off.
- In the energy save mode, «- - -» will flash on the display, which means it will be on for 0.5 seconds and off for 3 seconds. The «- - -» LED will be less bright in the energy save mode.
- To select a programme and run it, you must turn on and off the machine.

Programme progress indicators

Programme length

- If you open the door while the programme is running, the product will enter the standby mode. Once you close the door, press the Start/Pause button to resume the programme.
- Do not open the loading door when the programme is running. If you have to open the door, do not keep it open for too long.

Programme end

When the programme finishes, the warning LEDs for Start/Pause, water tank level, filter cleaning and condenser cleaning will light up. In addition, at the end of the programme you will hear a warning. You can remove the laundry so the dryer is ready for the next load.



IMPORTANT: Clean the lint filter after every programme. Empty the water tank after each programme.




IMPORTANT: If you do not remove the laundry once the programme ends, the Anti-crease option will be automatically activated for 1 hour. This option spins the drum at regular intervals to prevent creases.

Information on the drum light

- This product includes a LED light on the drum. The light turns on automatically when you open the door. It turns off automatically after some time.
- This is not an adjustable option for the user to activate or deactivate it.
- Please, do not try to replace or substitute the LED light.

PROGRAMMES	OPTIONS									
	Dry Target	Delay start	Buzzer warning mute	Child lock	Delicate dry	Dry Time	Dry Level	Anti-crease	Spin speed	Ion
Cotton	√	√	√	√	√	X	√	√	√	√
Synthetics	√	√	√	√	√	X	√	√	√	√
Delicate	√	√	√	√	√	X	X	√	√	X
Mix	√	√	√	√	√	X	√	√	√	√
Towels	√	√	√	√	√	X	√	√	√	√
Hygiene	√	√	√	√	√	X	√	√	√	√
Drying Time	X	√	√	√	X	√	X	√	X	√
Allergy Safe	√	√	√	√	X	X	√	√	√	√
Duvet	√	√	√	√	√	X	X	√	√	X
Extra Silent	√	√	√	√	X	X	X	√	X	√
Outdoor	√	√	√	√	√	X	√	√	√	√
Wool	X	√	√	√	X	X	X	√	X	√
Refresh	X	√	√	√	X	√	X	√	X	√
Express 45'	√	√	√	√	X	X	X	√	X	√
Shirts 30'	√	√	√	√	X	X	X	√	X	√
X	Not available									
√	Available									

 ATTENTION: The Delicate and Dry Level options are not available at once in any of the programmes.

Machine sound

Pump sound

Fig. 7


The pump is activated when the machine starts running and during operation at certain intervals. Hearing the sound of the pump and water is usual during this process.

Compressor sound

Fig. 8

Hearing a metallic sound from the compressor from time to time while the machine is running is usual.

6. CLEANING AND MAINTENANCE

 **IMPORTANT:** Do not use industrial chemical products to clean the dryer. Do not use a dryer which has been cleaned with industrial chemical products.

 **After cleaning**
IMPORTANT: REMEMBER TO CLEAN THE LINT FILTER AFTER EVERY USE.

How to clean the lint filters


Fig. 9

1. Open the loading door.
 2. Pull the lint filters upwards to remove them.
 3. Open the exterior filter.
 4. Clean the exterior filter with your hands or with a soft cloth.
 5. Open the interior filter.
 6. Clean the interior filter with your hands or with a soft cloth.
 7. Close the filters and place the hooks.
 8. Place the interior filter inside the exterior filter.
 9. Place the lint filter again in its place.
- After using the dryer for a certain period of time, if you find a layer which can block the filter surface, wash the filter with warm water to remove the layer.
 - Dry the filter thoroughly before installing it again. Fig. 10


Emptying the water tank


Fig. 11

1. Pull the drawer cover and remove the tank carefully.
2. Empty the water inside the tank.
3. If there is lint accumulated on the tank release cover, clean it with water.
4. Place the water tank again in its place.


 **IMPORTANT:** Never remove the water tank when the programme is running. Condensed water in the water tank is not safe for human drinking.
IMPORTANT: REMEMBER TO EMPTY THE TANK AFTER EVERY USE.

Heat exchanger cleaning

 **IMPORTANT:** Clean the heat exchanger when you see the heat exchanger cleaning warning.

 **IMPORTANT:** EVEN IF THE HEAT EXCHANGER CLEANING WARNING LED IS NOT ON: CLEAN THE HEAT EXCHANGER AFTER EVERY 10 DRYING PROCESSES OR ONCE A MONTH. Fig. 12
If the drying process finished, open the loading door and wait for it to cool down.

1. Open the protective plate cover as shown.
2. Unlock the exchanger cover by turning it in the arrows direction.
3. Remove the exchanger cover as shown.
4. Clean the front surface of the exchanger as shown.
5. Place the exchanger cover again as shown.
6. Lock the exchanger cover by turning it in the arrows direction.
7. Close the protective plate cover as shown.

 **WARNING:** DO NOT CLEAN IT WITH YOUR BARE HANDS, AS THE HEAT EXCHANGER FLAPS ARE SHARP. IT COULD DAMAGE YOUR HANDS.


Moisture sensor cleaning


Fig. 13

There are moisture sensors inside the machine which detect if the laundry is dry or not.

To clean the sensors:


1. Open the loading door of the dryer.
2. If the dryer is still hot due to the drying process, wait for it to cool down.
3. Using a soft cloth soaked in a little vinegar, wipe the metal surfaces of the sensor clean and dry them.
4. Leave the door open for a while to allow any type of smell to disappear.

 **IMPORTANT:** CLEAN THE METAL SURFACES IN THE SENSOR 4 TIMES A YEAR.
IMPORTANT: Do not use metal tools to clean the metal surfaces of the sensor.

 **WARNING:** Due to the risk of fire or explosion, do not use cleaning solutions, cleaning agents or similar products to clean the sensors.

Interior loading door surface cleaning


Fig. 14


 **IMPORTANT:** REMEMBER TO CLEAN THE INTERIOR SURFACE OF THE LOADING DOOR AFTER EVERY DRYING.

Open the loading door and clean all the interior surfaces and sealings with a soft and dry cloth.

7. TROUBLESHOOTING

Your dryer is equipped with systems that constantly check that it is working properly during the drying process and will warn you if something is not working properly.

 **WARNING:** If the problem persists, even if you have followed all the steps in this section, please contact the Cecotec Technical Support Service or an authorised service provider. Never try to repair the product if it does not work.


Problem	Cause	Solution
The drying process takes up too much time.	The lint filter surface may be blocked.	Wash the filter with warm water.
	The heat exchanger may be blocked.	Clean the heat exchanger.
	The ventilation grids on the front part of the machine may be closed.	Open the doors/windows to prevent the room temperature from increasing too much.
	There may be a layer of scale in the moisture sensor.	Clean the moisture sensor.
	The dryer may be overloaded with laundry.	Do not overload the dryer.
	The laundry might be insufficiently spin-dried.	Select a higher spin speed.
The laundry is moist after the drying process.	 The laundry which is hot after the drying process is usually moister.	
	The programme used may not be suitable for the type of laundry.	Check the care labels on the laundry, select a suitable programme for the type of laundry and use the time programmes.
	The lint filter surface may be blocked.	Wash the filter with warm water.
	The heat exchanger may be blocked.	Clean the heat exchanger.
	The dryer may be overloaded with laundry.	Do not overload the dryer.
	The laundry might be insufficiently spin-dried.	Select a higher spin speed.

The dryer cannot be opened or the programme cannot be started. The dryer does not start when it is set.	The dryer may not be plugged in.	Make sure that the plug is inserted into the socket.
	The loading door may be open.	Make sure the loading door is properly closed.
	You may have not selected a programme or you may not have pressed the Start/Pause button.	Make sure you have selected the programme and the dryer is not in the standby mode.
	The child lock may be active.	Disable the child lock.
The programme has been interrupted for no reason.	The loading door may not be properly closed.	Make sure the loading door is properly closed.
	There may have been a power cut.	Press the Start/Pause button to start the programme.
	The water tank may be full.	Empty the water tank.
Clothes have shrunk, become compacted or deteriorated.	The programme used may not be suitable for the type of laundry.	Check the care labels on the laundry and select a suitable programme for the type of laundry.
Water leakage on the loading door.	There may be accumulated lint in the interior surface of the loading door and in the sealing surface of the loading door.	Clean the interior surface of the loading door and the sealing surface of the loading door.
The loading door opens by itself.	The door may not be properly closed.	Push the loading door until you hear the closing sound.
The warning symbol of the water tank is on/ flashing.	The water tank may be full.	Empty the water tank.
	The drain hose may be bent.	If the product is connected directly to a water outlet check the drain hose water level.

The warning symbol of the heat exchanger cleaning is on.	The heat exchanger may be dirty.	Clean the heat exchanger.
The warning symbol of the filter cleaning is on.	The lint filters may be dirty.	Clean the filters.
	The filter base may be blocked by lint.	Clean the filter base.
	There may be a layer blocking the surface of the lint filters.	Wash the filters with warm water.
The filter and heat exchanger cleaning warning symbols are flashing.	The filter base may be blocked by lint.	Clean the filter base.
	There may be a layer blocking the surface of the lint filters.	Wash the filters with warm water.
	The heat exchanger may be blocked.	Clean the heat exchanger.
The programme cannot start and the filter warning LED is flashing.	The filter cannot be placed.	Replace the filter.
	The filter warning LED is flashing even though the filter is placed.	Contact the Technical Support Service.

Automatic error warnings


Your dryer is equipped with a built-in fault detection system, indicated by a combination of flashing operating lights. Next, you can find the most common error codes.

Error codes	Solution
E3/ 	If the problem is not solved, contact the nearest authorised service centre.
E04	Contact your nearest authorised service company.
E05	Contact your nearest authorised service company.
E06	Contact your nearest authorised service company.
E07	Contact your nearest authorised service company.

E08	There may be voltage fluctuations in the mains. Wait until the voltage is appropriate for the operating range.
-----	--

If the dryer displays a code which is not listed in the table, please contact the Cecotec Technical Support Service.

8. TECHNICAL SPECIFICATIONS

Brand	Cecotec
Name of the model	02354 DRESSCODE DRY 9500 ION
QR code	
Height	Min: 845 mm / Max: 855 mm*
Width	596 mm
Depth	609 mm
Capacity (max.)	9 kg**
Net weight (with plastic door)	49.0 kg
Net weight (with glass door)	51.4 kg
Voltage	220-240 V~
Frequency	50 Hz
Power	1000 W

*Min. height: Height without using the adjustable feet. Max. height: Height with the adjustable feet extended to the maximum.

**Weight of dry linen before washing.



IMPORTANT: In order to improve the quality of the dryer, technical specifications are subject to change without prior notice.



IMPORTANT: The values stated have been obtained in a laboratory environment in accordance with the relevant regulations. These values may vary depending on the environmental conditions and the use of the dryer.



ATTENTION:
1. For safety reasons, legislation requires a room of at least 1 m³ per 8 g of refrigerant

for such equipment. For 150 g of propane, the minimum allowable room size would be 18.75 m³. (These information is subject to regulatory changes).

2. Refrigerant: risk of fire/risk of poisoning/risk of damage to property and equipment. The appliance contains refrigerant which, although environmentally friendly, is flammable R290. If not disposed of properly, it may cause fire or poisoning. Dispose of the appliance correctly and do not damage the cooling circuit pipes.

- Refrigerant type: R290
- Amount of gas: 150 g
- ODP (ozone depletion potential): 0
- GWP (global warming potential): 3

1. Risk of explosion or fire. Remove lighters and matches from pockets.
2. Do not place the dryer near open fires or fire ignition sources.

Manufactured in China | Designed in Spain

9. ENVIRONMENTAL PROTECTION AND PACKAGING INFORMATION

The packaging in this product is made of recycled material. Do not dispose of the packaging together with household or other waste. Instead, take it to the collection point set up by the local authorities.

Energy efficiency

- You must use the dryer at full capacity, but make sure not to overload it.
- Wash the laundry at the highest possible spin speed. This will reduce drying time and energy consumption.
- Make sure you dry the same type of laundry together.
- Follow the recommendations in the user manual to select the programme.
- For air circulation, allow adequate distance between the side and rear walls of the dryer. Do not cover the grids on the front part of the machine.
- Unless necessary, do not open the door of the machine during drying. If you have to open the door, do not keep it open for too long.
- Do not add new (wet) laundry during the drying process.
- The fibres and lint that are released from the laundry during the drying process are collected in the lint filters. Make sure the filters are clean before and after every use.
- In models with heat pump, make sure you clean the heat exchanger at least once a month or after every 10 uses.
- During the drying process, the place where the dryer is installed must be well ventilated.

10. DESCRIPTION OF THE ENERGY LABEL AND ENERGY SAVING

Energy labelling

Fig.15

1. Brand
2. Model
3. Energy class
4. Annual energy consumption
5. Noise level when drying
6. Dry clothes load
7. Cotton - Cupboard dry cycle time
8. Condensation efficiency
9. Machine technology

11. DISPOSAL OF OLD ELECTRICAL APPLIANCES



This symbol indicates that, according to the applicable regulations, the product and/or battery must be disposed of separately from household waste. When this product reaches the end of its shelf life, you should dispose of the batteries/accumulators and take them to a collection point designated by the local authorities.

Consumers must contact their local authorities or retailer for information concerning the correct disposal of old appliances and/or their batteries.

Compliance with the above guidelines will help to protect the environment.

12. TECHNICAL SUPPORT AND WARRANTY

Cecotec shall be liable to the end user or consumer for any lack of conformity that exists at the time of delivery of the product under the terms, conditions and deadlines established by the applicable regulations.

It is recommended that repairs be carried out by qualified personnel.

If at any moment you detect any problem with your product or have any doubt, do not hesitate to contact Cecotec official Technical Support Service at +34 963 210 728.

13. COPYRIGHT

The intellectual property rights over the texts in this manual belong to CECOTEC INNOVACIONES, S.L. All rights reserved. The contents of this publication may not, in whole or in part, be reproduced, stored in a retrieval system, transmitted or distributed by any means (electronic, mechanical, photocopying, recording or similar) without the prior authorization of CECOTEC INNOVACIONES, S.L.

www.cecotec.es

Cecotec Innovaciones S.L.
C/ de la Pinadeta s/n, 46930
Quart de Poblet, Valencia (Spain)
YV01220124