

CONGA

POPSTAR

CONGA POPSTAR 4000 ULTIMATE PRO

Aspirador de trineo/Canister vacuum cleaner



cecotec

Manual de instrucciones
Instruction manual
Manuel d'instructions
Bedienungsanleitung
Manuale di istruzioni
Manual de instruções
Instrukcja obsługi
Návod k použití
Instructiehandleiding

INDEX

1. Parts and components	33
2. Before use	33
3. Operation	34
4. Cleaning and maintenance	34
5. Technical specifications	35
6. Disposal of old electrical appliances	35
7. Technical support and warranty	35

SAFETY INSTRUCTIONS

Read these instructions thoroughly before using the appliance. Keep this instruction manual for future reference or new users. All safety instructions should be closely followed when using the appliance.

Make sure that the mains voltage matches the voltage stated on the rating label of the appliance and that the outlet is grounded.

Do not immerse the cord, plug or other non-removable part of the product in water or other liquids. Do not expose the electrical connections to water. Make sure your hands are dry before handling the plug or switching on the appliance.

If the product falls accidentally in water, unplug it immediately. Do not reach into the water!

Check the power cord regularly for visible damage. If the cord is damaged, it must be replaced by the official Technical Support Service of Cecotec, in order to avoid any type of danger.

Do not move the product or pull from it from its cord. Do not use the cable as handle. Do not force the cable against corners or sharp edges. Do not run appliance over the cord. Keep the power cord away from hot surfaces.

Hold the plug while winding the cord-winder. Wind the cord carefully.

Do not use the appliance if its cord, plug, or housing is damaged, nor after it malfunctions or has been dropped or damaged in any way.

This appliance is not intended to be operated by means of an external timer or separate remote-control system.

Turn off and unplug the juicer from the mains supply when not in use and before cleaning. Pull from the plug, not the cord, to disconnect it from the outlet.

This appliance is intended for domestic use only. It is not suitable

for commercial or industrial use. Do not use it outdoors. Do not use the appliance in confined spaces with explosive or toxic vapours.

Keep the device and its charger away from heat sources.

Take special care when using the device to clean stairs.

Do not use the product to vacuum liquids, nor burning or hot objects. Do not vacuum sharp objects, toner dust, or plaster

Do not try to exceed the capacity of the container. Stop using the appliance once the dust container is full and empty it accordingly.

Do not put any objects into the openings of the appliance. Do not use the appliance if its openings are blocked. Do not restrict the airflow through the appliance. Keep all openings free of dust, lint, hair, and anything that may reduce the airflow.

If the suction openings of the unit, the flexible tube or the chrome telescopic tube are blocked, switch off the vacuum cleaner and remove the blocking substance before starting the unit again.

Do not use the appliance if the accessories or parts are not properly fastened.

Do not use any accessory that has not been recommended by Cecotec, as they might cause injuries or damage.

Keep hair, clothes, fingers and other body parts away from openings and moving parts of the product.

Do not leave the appliance unattended while in use. Unplug it from the mains supply when you finish using it or when you leave the room.

Do not try to disassemble the device by yourself. Contact the official Technical Support Service of Cecotec.

Cleaning and maintenance must be carried out according to this instruction manual to make sure the appliance functions properly. Turn off and unplug the appliance before moving and

cleaning it.

Store the appliance and its instruction manual in a safe and dry place when not in use.

No liability is accepted for any eventual damage or personal injuries derived from misuse or non-compliance with this instruction manual.

The appliance is not intended to be used by children under the age of 8. It can be used by children over the age of 8, as long as they are given continuous supervision.

This appliance is not intended to be used by persons with reduced physical, sensory, or mental capabilities, or lack of experience or knowledge, unless they have been given supervision or instruction concerning the use of the appliance in a safe way by a person responsible for their safety, and understand the hazards involved.

Supervise young children to make sure that they do not play with the appliance. Close supervision is necessary when the appliance is being used by or near children.

Keep this product out of the reach of children under 8 years old. Cleaning and maintenance must not be carried out by children.

1. PARTS AND COMPONENTS

Fig. 1

1. High-efficiency filter
2. Dual cyclone filter (mesh and sponge filters)
3. Transport handle
4. Power button
5. Cord-winding button
6. Power controller
7. Dust tank release button
8. Suction base
9. Telescopic tube
10. Flexible tube
11. Accessory for corners
12. Accessory for furniture
13. Brush for garments
14. Accessory-holder
15. Bristle brush

Fig. 3

1. Power selector
2. Cord-winding button
3. On/off button

2. BEFORE USE

Remove all packaging materials.

Inspect all parts of the appliance for visual damage. Unwind the power cord completely and inspect it for damage. Do not use the appliance if the device or its cord have been damaged or are not working properly. In case of damage, contact the official Technical Support Service of Cecotec for advice, repairs, or returns.

Make sure you have read and understood all instructions and warnings in this instruction manual. Pay particular attention to the safety instructions on previous pages.

Attach the flexible tube to the air intake channel. Push until the tube locks with a click.

Fig. 2

Insert the end of the handle of the flexible tube into the telescopic tube.

Extend the telescopic tube by sliding the plastic button and pulling from the upper part of the tube. Adjust its length to your liking.

Insert the telescopic tube into the floor brush.

Unplug the appliance from the mains supply before assembling or removing any accessory.

3. OPERATION

Once all parts are in place, unwind a reasonable length of the cord and plug the appliance into a grounded wall outlet. A yellow mark on the power cord marks the ideal length. Do not pull the power beyond the red mark.

Press the On/off button to turn the device on.

Suction power can be adjusted with the power controller on top of the appliance.

Use the most appropriate accessory depending on the kind of cleaning:

Accessory for furniture: Perfect for vacuuming on wardrobes, chairs, tables, etc. without damaging them.

Accessory for garments: For all kind of garments and upholsteries (sofas, armchairs, etc.).

Accessory for corners: Vacuum the dirt on corners and sockets.

Bristle brush: Achieve a deep cleaning in every corner.

Once finished, unplug the appliance and use the cable-winder button to rewind the cord into the appliance. Use one hand to press the button and guide the power cord with the other.

Fig. 3

Note: Please note that there is a safety switch inside the vacuum cleaner to prevent the unit from being run at high vacuum rates. If the vacuum is too high, the safety switch will be turned on. In this case, it can diminish the vacuum rate and protect the motor from being damaged.

4. CLEANING AND MAINTENANCE

Press the release button on top of the dirt container and remove it from the main body of the appliance.

Press the button on the lower end of the container to open its lid and empty its contents.

Fig 4.

Clean the outside of the appliance with a damp cloth. Do not use abrasive cleaning agents as they could damage the product.

Use the handle on top of the appliance to carry it.

Fig. 5

Cleaning of the filters

Dual Cyclone filter

Press the release button on top of the dirt container and remove it from the main body of the appliance.

Hold the container's body and rotate its upper lid counterclockwise to remove it.

Remove the Dual Cyclone system.

If the sponge filter is so dusty that suction does not return to 100 %, then it is recommended to

rinse it under running water and leave it to dry over 24 hours before attaching it to the vacuum cleaner.

You can clean the mesh filter carefully with a dry cloth to remove the dirt stuck to the filter.

Fig. 6

High-efficiency filter

Rotate the cover of the exhaust filter counterclockwise to remove it (turn it clockwise to lock it again).

You can clean the high-efficiency filter carefully with a dry cloth to remove the dirt stuck to the filter.

If the high-efficiency filter is too dirty, it is recommended to rinse it under running water and leave it to dry over 24 hours before attaching it to the vacuum cleaner.

Fig. 7

5. TECHNICAL SPECIFICATIONS

Product reference: 05559

Product: Conga PopStar 4000 Ultimate Pro

800 W, 220-240 V~, 50-60 Hz

Made in China | Designed in Spain

6. DISPOSAL OF OLD ELECTRICAL APPLIANCES



The European directive 2012/19/EU on Waste Electrical and Electronic Equipment (WEEE), specifies that old household electrical appliances must not be disposed of with the normal unsorted municipal waste. Old appliances must be collected separately, in order to optimise the recovery and recycling of the materials they contain, and reduce the impact on human health and the environment.

The crossed out "wheeled bin" symbol on the product reminds you of your obligation to dispose of the appliance correctly.

Consumers must contact their local authorities or retailer for information concerning the correct disposal of old appliances and/or their batteries.

7. TECHNICAL SUPPORT AND WARRANTY

This product is under warranty for 2 years from the date of purchase, as long as the proof of purchase is submitted, the product is in perfect physical condition, and it has been given

FRANÇAIS

proper use, as explained in this instruction manual.

The warranty will not cover the following situations:

The product has been used for purposes other than those intended for it, misused, beaten, exposed to moisture, immersed in liquid or corrosive substances, as well as any other fault attributable to the customer.

The product has been disassembled, modified, or repaired by persons, not authorised by the official Technical Support Service of Cecotec.

Faults deriving from the normal wear and tear of its parts, due to use.

The warranty service covers every manufacturing defects of your appliance for 2 years, based on current legislation, except consumable parts. In the event of misuse, the warranty will not apply.

If at any moment you detect any problem with your product or have any doubt, do not hesitate to contact Cecotec Technical Support Service at +34 963 210 728.

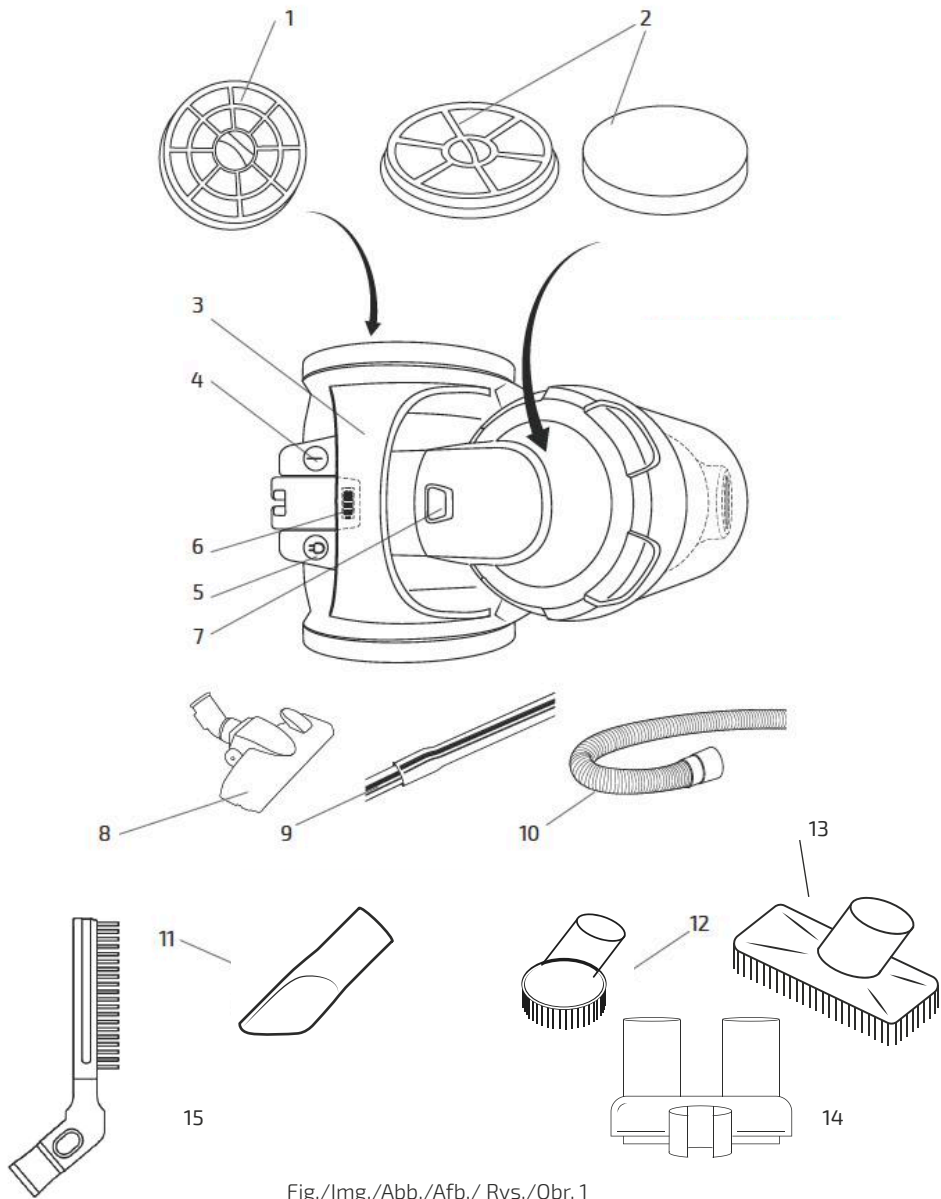


Fig./Img./Abb./Afb./ Rys./Obr. 1

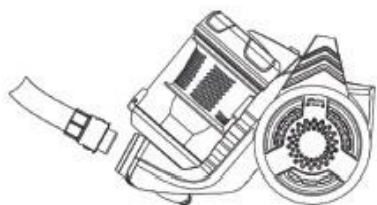


Fig./Img./Abb./Afb./ Rys./Obr. 2

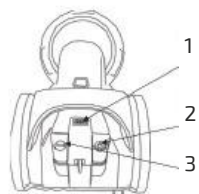


Fig./Img./Abb./Afb./ Rys./Obr. 3

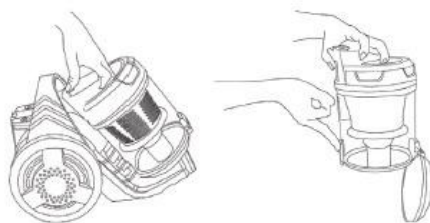


Fig./Img./Abb./Afb./ Rys./Obr. 4

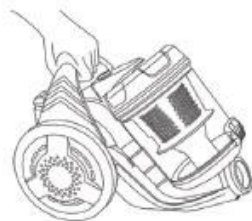


Fig./Img./Abb./Afb./ Rys./Obr. 5

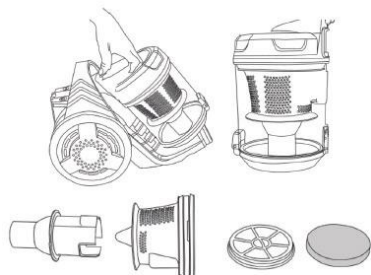


Fig./Img./Abb./Afb./ Rys./Obr. 6

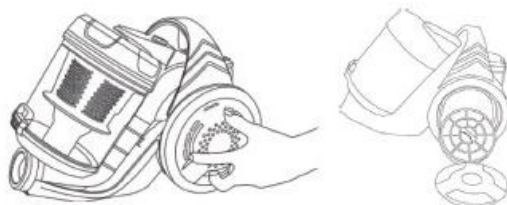


Fig./Img./Abb./Afb./ Rys./Obr. 7

www.cecotec.es

Grupo Cecotec Innovaciones S. L.
C/de la Pinadeta s/n, 46930
Quart de Poblet, Valencia, Spain

EA03201014