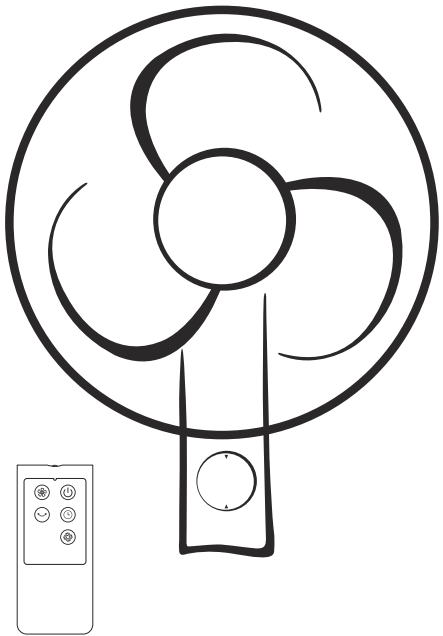




## MIDEA PRODUCT OPERATING Instructions Manual



### Model of Mechanical Fan (Mechanica Wall Fan) : FW40-7JR

Thank you for choosing the products of Midea!Please preserve the manual after reading it.

Any change in the appearance and color of the product shall be subject to the real object.

#### SPECIAL ANNOUNCEMENT

- 1.The Instruction has been proofread carefully. The company reserves the right to the interpretation thereof.
- 2.The product is subject to any technical improvement in the future without the prior notice.
- 3.Any change in the appearance and color of the product shall be subject to the real object.
- 4.The pictures herein are only for reference.

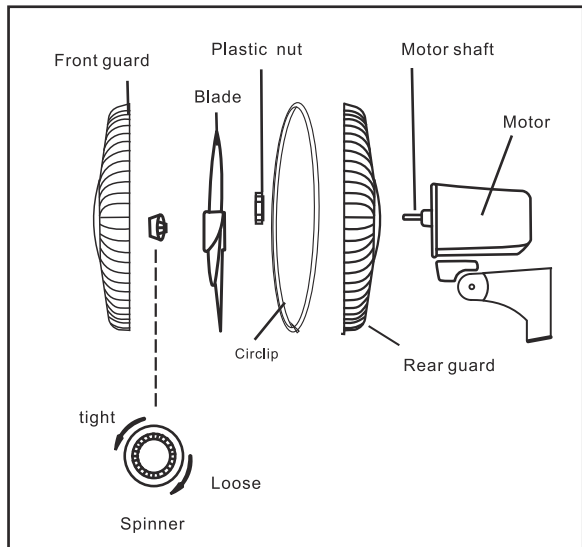
#### WARNING

1. Do not leave the fan running unattended.
- 2.If the supply cord is damaged, it must be replaced by manufacturer or its service agent or a similarly qualified person in order to avoid a hazard.
- 3.To protect against the risk of electrical shock, do not immerse the unit, cord or plug in water or other liquid.
- 4.This appliance is not intended for use by persons (including children) with reduced physical, sensory or mental capabilities, or lack of experience and knowledge, unless they have been given supervision or instruction concerning use of the appliance by a person responsible for their safety. Young children should be supervised to ensure that they do not play with the appliance.
- 5.When the appliance is not in use and before cleaning, unplug the appliance from the outlet.
- 6.When the fan was assembled, the rotor blade guard shall not be taken off anymore.

#### RULES FOR SAFE OPERATION

- 1.Never insert fingers,pencils,or any other objects through the grille when fan is running.
- 2.Disconnect fan when moving from one location to another.
- 3.Be sure fan is on a stable surface when operating to avoid overturning.
- 4.Do not use fan in window. Rain may create electrical hazard.
- 5.Indoor use only.

#### ILLUSTRATION TO PARTS



Remark: Due to the discrepancy amongvarious modes of the products, please refer to the real objects upon installation.Illustration is for reference only.

#### METHOD OF INSTALLATION

##### 1. Assembly of the Guard and Blade

###### 1.1 Install Rear Guard

Turn down the spinner and locking nut from the front of the motor shaft and then install the rear guard. Finally, put the locking nut back and screw down it (as shown in Figure 1. ).

###### 2.2. Install Blades

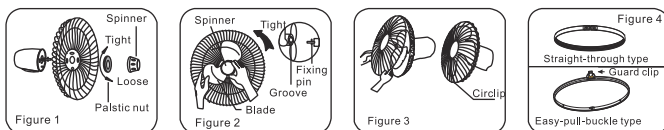
Install the blades onto the motor shaft until that the groove behind the blades reaches the fixing pin , and then tighten the spinner counter-clockwise ( as shown in Figure 2. ).

###### 1.3 Install Front Guard

The structure of the circlip is classified into the straight-through type and the easy-pull-buckle type. Therefore, the front guard can be installed in the following two ways:

(1) Method for installation of straight-through circlip: Normally, the circlip is installed with the front guard. Position the decorating ring of the guard before installing the front guard, and loose the screw on the circlip appropriately. After that, align the front guard with the rear one to insert the external buckle on the rear guard into the internal groove on the circlip, then tighten the screw on the circlip.

(2) Method for installation of easy-pull-buckle circlip: Normally, the circlip is installed with the front guard. Position the decorating ring of the guard before installing the front guard, then align the front guard with rear one to insert the external buckle on the rear guard into the internal groove of the circlip. After that, lock the guard clip and tighten the screw. (Method for installation of the front guard is as shown in Figure 3. The structure of the circlip is as shown in Figure 4.)

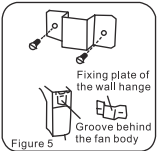


##### 2. Installation on the wall (Figure 5)

The fan must be installed on the wall or column vertical to the ground. Note: To prevent the fan from falling, make sure the fixing plate for wall hook is firmly fixed on the wall where the wall fan is installed.

2.1 Use two screws to firmly fix the fixing plate for wall hook to the wall, and make sure the wider end of the groove is upward. Note: Make sure the space between installation position of fixing plate and the ceiling as well as adjacent wall is up to minimum 45cm and 30cm respectively.

2.2 Lift the wall fan to thoroughly insert the groove on the backside of the wall fan into the wall hook on the fixing plate fixed on the wall.



#### HOW TO USE

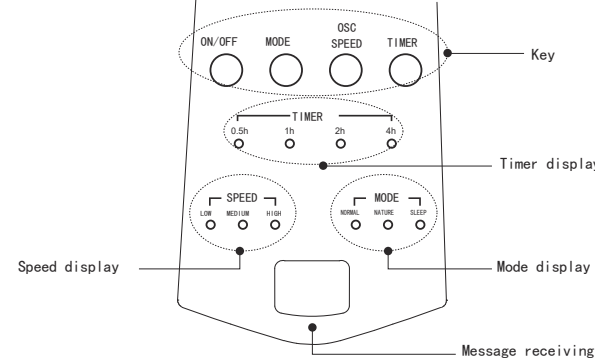
##### THE POWER STANDARD IS 220-240V~/50Hz

###### 1. Remote Controller (Figure 6)

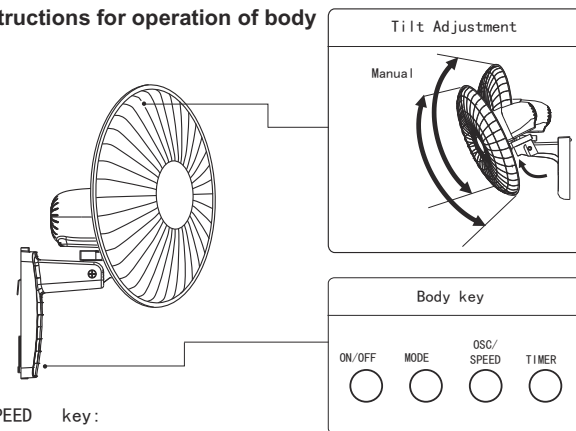
###### 1.1. Control Keys

- Press this key to start the fan and enter the first shift of the normal air type, After the fan is started, press this key again to turn off the fan.
- After the fan is started, press the key repeatedly, the air speed will be subject to the cyclic change in the sequence from low to high. Meanwhile, the corresponding indicator lights on the panel will flash.
- This key is for the selection of air mode. Press it repeatedly, the air mode will be subject to the cyclic change in the order of "Normal- Natural -Sleep".Meanwhile, the corresponding indicators on the panel will be on alternately. The features of the air modes are as follows:  
Normal: The fan supplies a constant wind that was set by the air speed key. The wind is adjustable. It has three levels of low, middle and high.

#### Instructions for display of body



#### Instructions for operation of body



OSC/SPEED key:

When the fan is working, press this key for 3 second , to start or stop oscillation.  
When the fan is working, press this key repeatedly, the fan will work in "Low-Medium-High" sequence.

Natural: The fan deliver wind ,which simulate the natural wind according to the preset computer program and bring us an easy and natural feeling.  
The wind is associated with the program. It also has three levels of low, middle and high.

Sleep: The fan deliver a wind according to the preset computer program .The wind is associated with the program and suitable when sleeping. It has two levels of low and middle.

- This key serves to start or stop the fan oscillation. To choose one direction , press this key until the fan is in the desired direction when it is oscillating.
- Press this button repeatedly, and the time of period for air supply is set between 0.5 ~ 7.5 hours at a step of 0.5 hour , corresponding indicator will be on. The fan will be shut down automatically when the time is over.

##### 1.2.How to Use the Remote Controller

- (1) Make sure the infrared led on the front end of the remote controller is in alignment with the display window on the fan body when using the remote controller.
- (2) Remote controller is available for operation within the range of 5 meter away from the front of fan body and 30° deviation at the left or right side of the fan body.
- (3) Keep the receiving window away from direction exposure to the sunshine that may affect the operation effect of the receiver.
- (4) Please remove the battery for proper treatment if the remote controller is to be left idle for a long time or before the built-in battery fall into decay.

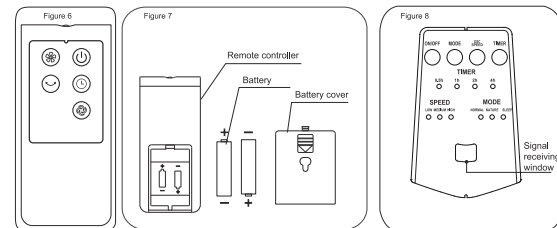
##### 1.3. Replacement of Batteries of Remote Controller

The remote controller use two 1.5V 7# batteries . They should be installed as follows:( as shown in figure 7)

- (1) Open the battery cover.
- (2) Install new batteries, and pay attention to their polarity (+ and -).
- (3) Put back the battery cover.

##### 2. Buttons of the Body / Panel indication (Figure6 and Figure 8)

- ON/OFF Button  
You can press this key to open/turn off the fan
- MODE Button  
You can press the key "MODE" for remote control
- OSC SPEED Button  
Press 3 seconds to open/close oscillation.  
Press this key short to change the speed in the sequence from low to high
- TIME Button  
You can press the key "TIME" for remote control



##### 3.Pitching Blowing

Lightly lift or press the head or guard to adjust when you need blowing up or down.



#### ATTENTIONS

- Before using,please check if the used voltage is the same as the voltage marked on the fan.
- Do not pull the power plug with a wet hand in order to avoid the risks of a leakage inductance or electric shock.
- Please keep away from high temperature,high moisture, acid or alkali oil,insecticide, curtain and other easily be attracted things.
- Before using, please inspect the supply cord and plug . If the supply cord is damaged,it must be replaced by Midea Customer Service Centre in order to avoid a hazard.
- Do not connect the power until the fan is assembled. Unplug and disconnect the power before moving the fan.
- Never insert fingers,pencils or any other object through the grille when fan is running.
- Do not expose infants and elderly to strong wind for a long time.

#### MAINTENANCE METHOD

- 1.Disconnect fan when removing grilles for cleaning.
- 2.Do not use any grinding tool or solvent that may damages the surface to clean this product. Use cleanser to clean the product surface before wiping it with cleaning cloth.
- 3.It is forbidden to clean the electrical parts (e.g. power switch, motor, etc.) with water or other liquid. Clean the electrical parts only by the clean cloth.
- 4.It is forbidden to disassemble the product for reconstruction. It is recommended to carry out inspection and cleaning for the product every year so as to extend its service life.

#### CLEANING

1. Be sure to unplug from the electrical supply source before cleaning.
2. Plastic parts should be cleaned with a soft cloth moisten with mild soap. Thoroughly remove soap film with dry cloth.

#### DISPOSAL

Do not dispose of electrical appliances as unsorted municipal waste, use separate collection facilities. Contact you local government for information regarding the collection systems available. If electrical appliances are disposed of in landfills or dumps, hazardous substances can leak into the groundwater and get into the food chain, damaging your health and well-being.



#### MODEL AND BASIC PARAMETERS

Model	FW40-7JR
Rated voltage	220-240V~
Rated frequency	50Hz
Power	55W
Product size(DxWxH)	330×452×540mm
Net weight	3.6kg