

cecotec

POWER BLACK TITANIUM 1800 GO

Jug blender



Instruction manual

INDEX

1. Parts and components
2. Before use
3. Operation
4. Cleaning and maintenance
5. Technical specifications
6. Disposal of old electrical appliances
7. Technical support and warranty

SAFETY INSTRUCTIONS

Read these instructions thoroughly before using the appliance. Keep this instruction manual for future reference or new users. Make sure that the mains voltage matches the voltage stated on the rating label of the appliance and that the wall outlet is grounded.

This product is designed only for household use. Do not operate outdoors.

Check the power cord regularly for visible damage. If the cord is damaged, it must be replaced by the official Technical Support Service of Cecotec in order to avoid any type of danger.

The blades inside the product are very sharp, handle them carefully to avoid any possible cut.

Take extreme precaution during cleaning, maintenance or while emptying the jug.

Do not pour hot liquids inside the product while it is operating as it could be ejected out causing burns.

Never leave the appliance unattended while in use.

Always turn off and disconnect the appliance from the power supply before assembling, disassembling, cleaning it or if it is

not going to be used for a long period of time. Pull from the plug, not the cord, to disconnect it from the outlet.

Do not immerse the cord, plug, or any non-removable part of the appliance in water or any other liquid, nor expose the electrical connections to water. Make sure your hands are dry before handling the plug or switching on the appliance.

Do not touch the product's surface that could reach high temperatures. Use the handle.

Do not use accessories not provided or suggested by Cecotec, as these could cause damage to the product or result in risk.

Do not twist, bend, strain, or damage the power cord in any way. Protect it from sharp edges and heat sources. Do not let it touch hot surfaces. Do not let the cord hang over the edge of the working surface or counter top.

Do not use outdoors, near a gas or electric hob, in heated ovens or near open flames.

Extreme caution must be taken when moving appliances containing hot liquids or foodstuffs.

Always turn the appliance off and disconnect it from the power supply before changing accessories or approaching moving elements.

Do not introduce any utensil inside the product during operation in order to reduce risk of injuries to persons or damage to the product. A scraper may be used while the product is paused.

Make sure to keep the measuring lid in its position when blending hot liquids or ingredients.

Do not use the product if its blade is curved or damaged.

Do not operate the appliance empty.

Make sure the accessory that is going to be used is properly assembled before operating the device.

Do not overfill the jar.

Always operate the product with the cover in place.

The appliance is not intended to be used by children under the age of 8. It can be used by children over the age of 8, as long as they are given continuous supervision.

This appliance can be used by children aged 8 and above, and persons with reduced physical, sensory or mental capabilities or lack of experience and knowledge, as long as they have been given supervision or instruction concerning the use of the appliance in a safe way and understand the hazards involved. Supervise young children to make sure that they do not play with the appliance. Close supervision is necessary when the appliance is being used by or near children.

1. PARTS AND COMPONENTS

Fig. 1

1. Measuring cup
2. Lid
3. Glass blending jar
4. Blade bracket
5. Sealing ring
6. Jug base
7. Control panel
8. Main body

Fig. 2

9. Portable bottle
10. Blade holder for portable bottle
11. Portable bottle cap

2. BEFORE USE

- Take the product out of the box.
- Remove all packaging material. Keep the original box.
- Make sure all parts and components are included and in good conditions. If any sign of visible damage is observed, contact immediately with our official Technical Support Service.
- Place the appliance on a flat, stable and dry surface.

3. OPERATION

1. Set the power knob to "0" to turn the device off.
2. If you use the bottle instead of the jug, press down before you start blending and during blending. Move the power selector to the "0" position before releasing the downward pressure.
3. Turn the power knob to the Turbo position to activate this function.
4. This product has 5 power levels, being 1- minimum power and 5- maximum power. Set the desired power level according to the ingredients to be used.

Warning:

- The maximum capacity of the jug is 1.8 litres, and the maximum capacity of the bottle is 600 ml, do not exceed these quantities.
- Do not operate the machine empty. It is recommended to fill the jar or bottle with 2 parts fruit and 3 parts water (only "soft" fruit or vegetables such as carrots, apples, etc.).
- The maximum non-stop operating time is 2 minutes. Do not operate the product for more than this time.

4. CLEANING AND MAINTENANCE

- Set the selector switch to the "0" position and disconnect the product from the mains after each use and before cleaning.
- Clean the different parts with water. Do not use chemical or harsh abrasive cleaning agents.
- Use a dry, soft cloth to clean the motor base. Do not clean this part with a wet cloth.

With the help of the main body, turn the joint system joining the blades and the base of the jar counterclockwise. Once it has been loosened, carefully remove the blades. Repeat the process in reverse to assemble the device (turning clockwise). Fig. 3

Maintenance

If the product does not operate normally, produces uncommon noises or shakes more than it normally does, stop using the product and contact the Technical Support Service of Cecotec for reparation. Do not carry out maintenance tasks yourself.

Storage

- After cleaning the device, make sure it is thoroughly dried before storing it.
- After using the product, store it in a dry, safe place. Avoid direct exposure to sun light.
- Make sure it is stored in a place out of the reach of children.

5. TECHNICAL SPECIFICATIONS

Model: Power Black Titanium 1800 Go

Product reference: 04310

1800 W, 220-240 V, 50/60 Hz

Made in China | Designed in Spain

6. DISPOSAL OF OLD ELECTRICAL APPLIANCES



The European directive 2012/19/EU on Waste Electrical and Electronic Equipment (WEEE), specifies that old household electrical appliances must not be disposed of with the normal unsorted municipal waste. Old appliances must be collected separately, in order to optimise the recovery and recycling of the materials they contain and reduce the impact on human health and the environment.

The crossed out "wheeled bin" symbol on the product reminds you of your obligation to dispose of the appliance correctly. Consumers must contact their local authorities or retailer for information concerning the correct disposal of old appliances and/or their batteries.

7. TECHNICAL SUPPORT AND WARRANTY

This product is under warranty for 2 years from the date of purchase, as long as the proof of purchase is submitted, the product is in perfect physical condition, and it has been given proper use, as explained in this instruction manual.

The warranty will not cover the following situations:

- The product has been used for purposes other than those intended for it, misused, beaten, exposed to moisture, immersed in liquid or corrosive substances, as well as any other fault attributable to the customer.
- The product has been disassembled, modified, or repaired by persons, not authorised by the official Technical Support Service of Cecotec.
- Faults deriving from the normal wear and tear of its parts, due to use.

The warranty service covers every manufacturing defects of your appliance for 2 years, based on current legislation, except consumable parts. In the event of misuse, the warranty will not apply.

If at any moment you detect any problem with your product or have any doubt, do not hesitate to contact Cecotec Technical Support Service at +34 963 210 728.

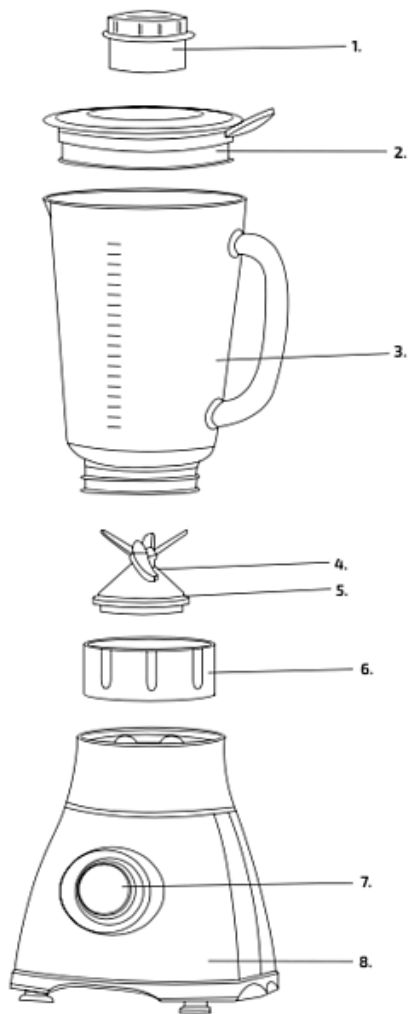


Fig./Img./Abb./Rys./Obr. 1

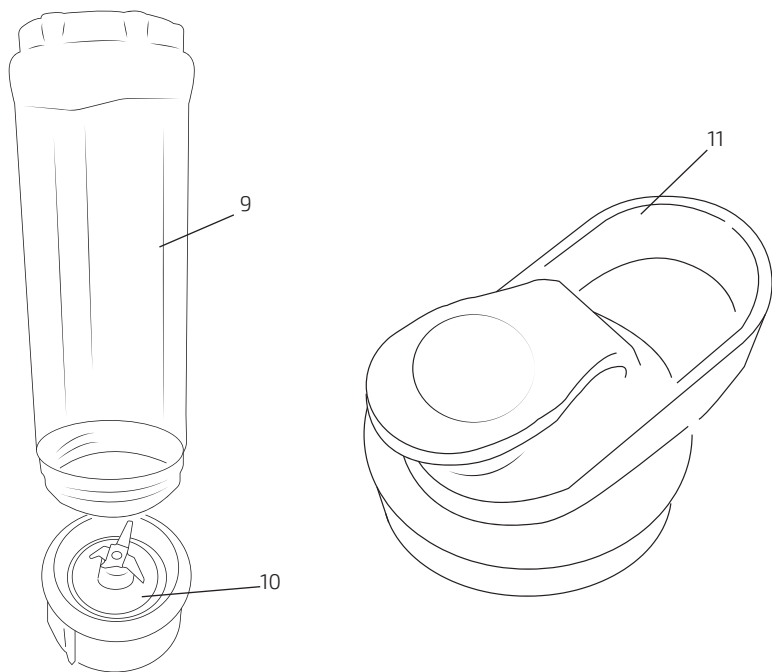


Fig./Img./Abb./Rys./Obr. 2

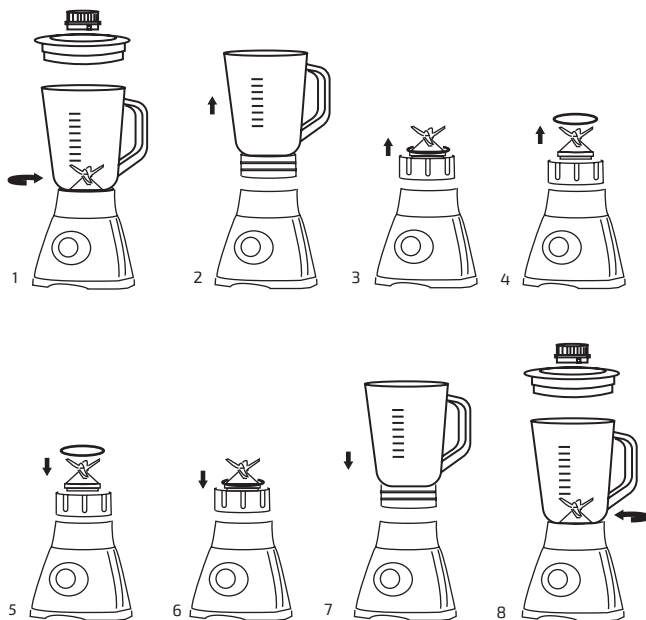


Fig./Img./Abb./Rys./Obr. 3

www.cecotec.es

Cecotec Innovaciones S. L.
C/de la Pinadeta s/n, 46930
Quart de Poblet, Valencia, Spain

EA01Z10607