

## TROUBLE SHOOTING

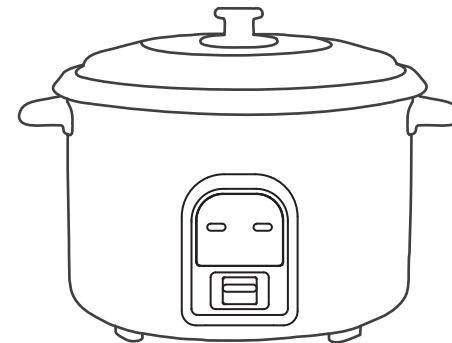
Malfunction		Causes	Solution
The light is off	Heating plate is not hot	Circuit of electric rice cooker is not connected to power supply.	Inspect whether the switch, plug and socket connector, fuse and leading wire of power supply are in good condition and insert the plug reliably.
	Heating plate is hot	1. Wiring connection of indicator light has loosened. 2. Indicator light is damaged.	It should be sent to an uthorized service department for maintenance.
The light is on	Heating plate is not hot	1. Wiring in the middle has loosened. 2. Electric-thermal tube has burnt out.	
Cooked rice is crude or time of cooking is too long		1. Cooking time is insufficient. 2. Heating plate is deformed. 3. Inner pot is declined and one side is hanging in the air. 4. There is foreign matter between inner pot and heating plate. 5. Inner pot is deformed.	1. Cook rice according to required conditions. 2. The fine sand paper can be used for correcting slight deformation but the severely deformed one should be sent to maintenance department for replacement. 3. Turn the inside pot lightly to make it return to normal. 4. Clean it up with fine sand paper. 5. Send to designated service department.
	Cook rice burnt or cannot keep warm automatically	1. The keys of cooking rice and lever link gear is not working. 2. The steel magnet temperature limiter is out of work. 3. The temperature controller is burnt out wiring of it is loosened.	It should be sent to an uthorized service department for maintenance.

## SPECIAL STATEMENT

Addition: Any technical improvements shall be placed in the revised manual without notice; for any changes in appearance and color, those of the actual product shall prevail.  
All the contents in this material have been subjected to carefully check.  
For any mistake and omission in printing or misunderstanding of the contents, the Midea keeps the right of interpretation.

## EN Instruction Manual of Rice Cooker

Please read the instruction manual carefully before using, so that you can use the rice cooker exactly !

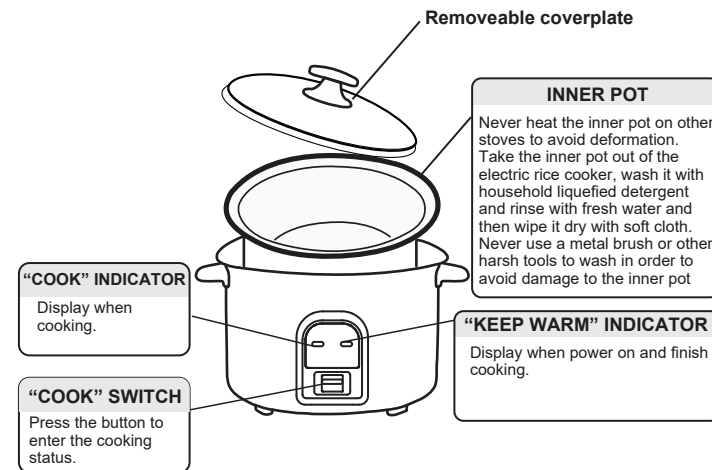


**MR-GM10SA**  
**MR-GM18SA**  
**MR-GM18HA**  
**MR-GM28HA**

## PRODUCT SPECIFICATION

Thank you for purchasing the Midea rice cooker, please read this instruction manual carefully before using. Keep it cautiously after reading for future reference.  
Choosing quality of Midea, you can find the life could be more beautiful!


This specification of product photographs with MR-GM28HA series, for example.



## PRODUCT SPECIFICATION

Model	Rated Voltage	Rated Power (W)	Cooking Capacity (L)	Cooking Method	Rice Quantity (Cup)
Model 10	230V~ / 50Hz	500	1.0	Direct Heating Mode	1-5
Model 18		700	1.8		4-10
Model 22		900	2.2		4-12
Model 28		1000	2.8		8-16

Accessories    Spoon    Spatula    Measuring Cup



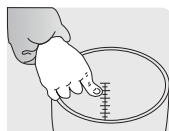
## OPERATION INSTRUCTIONS

### 1. Rice measuring and washing

• The measuring cup is mainly used to measure the amount of rice. A flat cup of rice is 0.18L (approx. 150g).



2. Put washed rice into the inner pot and add water to the corresponding level (e.g., add water to high level "3" if 3 cups of rice are to be cooked), add or reduce the amount of water depending your personal taste highest level.



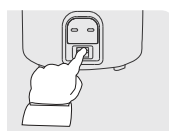
• To steam food off water  
• No foreign matter can be allowed between inner pot and electric heating plate.



3. Mop up the interior and exterior of the inner pot with dry cloth, place it into the cooker body. Turn the inner pot gently for several times to allow its bottom come into contact with the electric heating plate.



4. Close the lid in place

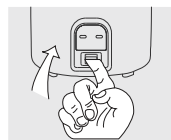
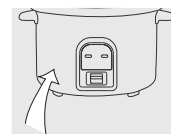


## OPERATION INSTRUCTIONS

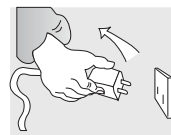
### 5. Cooking

The "WARM" lamp is illuminated after plugging into the outlet. The Rice Cooker are entering the cooking process until you have pressed the "COOK".

Otherwise, the Rice Cooker will still in warming process (Please be sure that you have pressed the "Cooking" Otherwise, the Rice Cooker will still in warming process).



6. When cooking is finished, the cooking switch will pop up and a "Click" will be heard. At the same time, the cooking light will go out and keep warm light will go on.



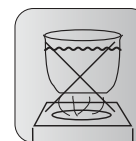
Special Hint: Rice is best served 15 minutes after cooking.



7. When filling bowl with rice, the attached spoon, not metal spoon, should be used to avoid scuffing the non-sticky coating of inner pot and causing exfoliation of coating at the same time, dry grain of cooked rice should be removed.

## PRECAUTIONS

1. The inside pot can not be heated on any other furnace, otherwise it can be deformed easily.



2. The cooked rice start to keep warm, it is not suitable for eating immediately and it will more soft and delicious if let it stewing for 15 minutes.

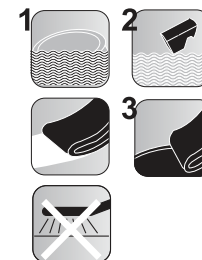


3. The time of keeping warm don't exceed 6 hours in order to avoid the cooked rice off flavor.



## CLEANNES METHOD

1. Take the inner pot out of the electric rice cooker, wash it with domestic liquefied detergent and rinse with fresh water and then wipe it dry with soft cloth.



2. The grain of cooked rice or other sundries may attach to electric hot tray, the fine sand paper can be used for grind them away and wipe it with soft cloth to keep the fully contact between inner pot and electric heating plate.

## SAFE NOTE

1. The earthed wall socket should be used and the plug must be inserted reliably. Do not use multipurpose socket while using other electric appliance at the same time.

2. When do not use it, please pull the power cord out of the socket.

3. After insert the power cord into socket, it must be inserted to the death; otherwise the element may be burnt out by poor connection.

4. The electric rice cooker can not placed on unstable, wet place near fire otherwise it will be damaged or go wrong.

5. The body and cover of electric rice cooker cannot be washed with water or in water, otherwise the insulator will be damaged and become dangerous.

6. If the power cord is damaged, it must be changed with new power cord produced by the manufacturer.

7. Do not let a child operate the product alone. Put it out of the reach of babies to avoid electric shock, scald and other dangerous accidents.